



Industrial Solutions Partner!

SSD1912

19" Resizing LCD, 300 nits LED backlight, 1680x342 ultra wide aspect ratio 16:3

SSD1912 is an innovative ultra-wide, LED backlight LCD display. It provides LCD panel with specific ratios for digital signage, public transportation, exhibition hall, department store, vending machine and industrial applications. Incorporating with A.D. control board and backlight design, can display high-quality video with energy-efficient.

Key Features

- Resizing LCD
- Ultra Wide Screen (16 : 3)
- LED Backlight
- Brightness 300 nits
- Wide Viewing Angle
- Low Power Consumption
- High Uniformity (90%)
- Wide Dimming
- Life Expectancy (70,000hrs)
- Slim Bezel



Specifications

Preliminary

Model No.	SSD1912
Description	19" Resizing LCD, 300 nits LED backlight
Display Area	473.76 x 96.44 mm
Brightness	300 cd/m ²
Resolution	1680 x 342
Aspect Ratio	16 : 3
Contrast Ratio	2000:1
Pixel Pitch (mm)	0.282 x 0.282
Viewing Angle	178°(H), 178°(V)
Display Colors	16.7M
Response Time (Typical)	20 ms
Sync	LVDS
Power Consumption	17.5W
Dimensions (mm)	496.3 x 127.4 x 57.1
Weight (Net)	2.3kg
LED Driving Board	LID19
Control Board (Optional)	AD5621G / AD5621GA / AD2662GD / AD2662GDVAR
<input type="checkbox"/> AD5621G/AD5621GA	VGA / VGA + Audio
<input type="checkbox"/> AD2662GD	VGA + DVI
<input type="checkbox"/> AD2662GDVAR	VGA + DVI (Optional AV/ S-Video / Component / Audio)
<input type="checkbox"/> Others	
F / R Control Button	5 Key / 4 Key
<input type="checkbox"/> 4 Key	Power Switch, Menu, Select (+,-),
<input type="checkbox"/> 5 Key	Power Switch, Menu, Select (+,-),Auto
OSD Menu	Brightness, Contrast, H/V Position, Color, Phase, Clock...
Optional	<input type="checkbox"/> Touch Screen

Specifications are subject to change without notice.
All brands or product names are trademarks or registered trademarks of their respective companies.

SSD= Panel+ LED Driving Board + Control Board

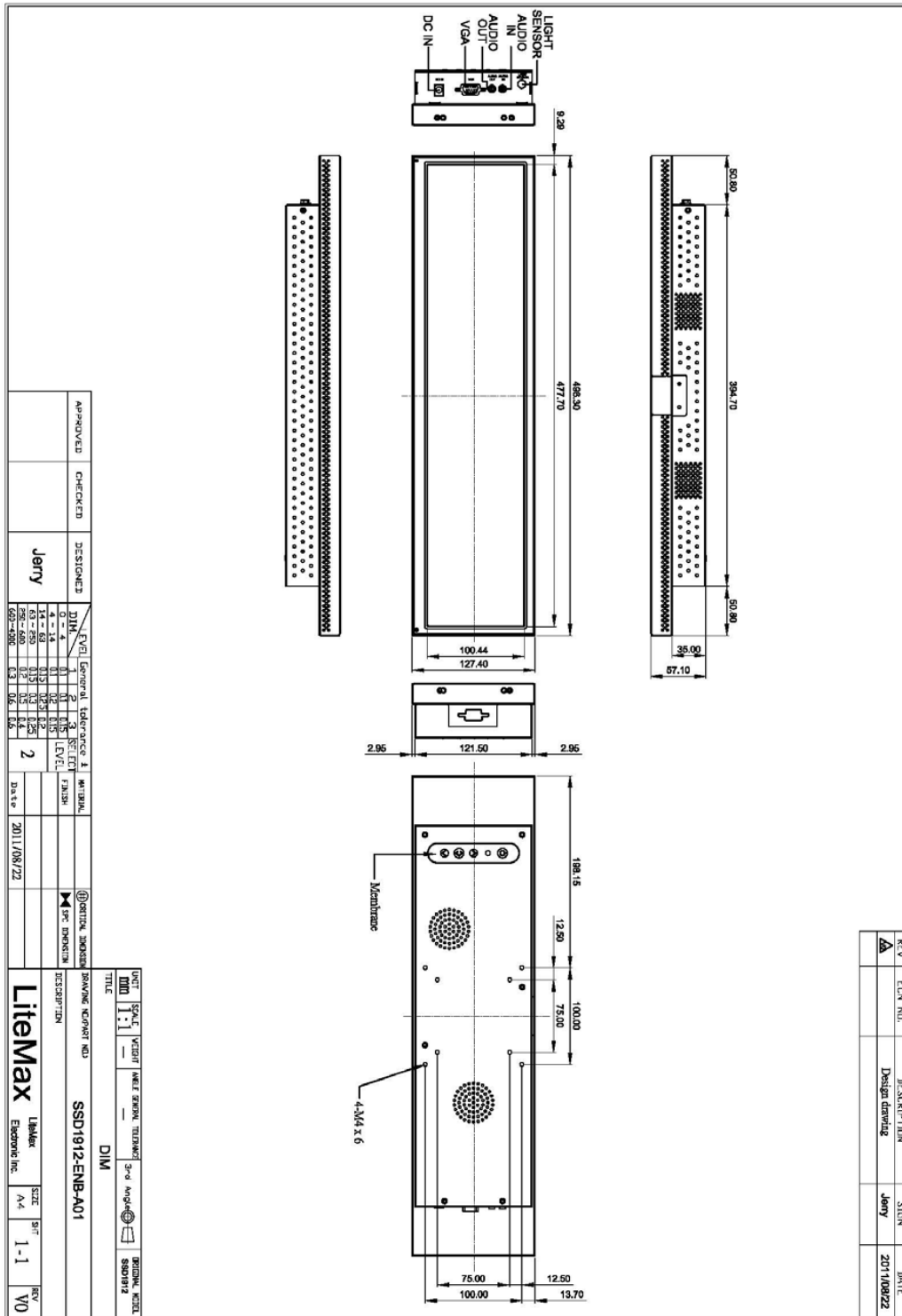


Industrial Solutions Partner!

Mechanical Drawing

Outline Dimensions

Unit: mm





Industrial Solutions Partner!

Ordering Information

Model Name	Description
SSD1912-ENB-A01	19",300nits,1680*342,LID19,AD5621GA,O/B,DC12V input,V1

Optional Accessories

Part Number	Description
840612051100	ADAPTER.12V.5A.60W.EA1050A,P
810618301010	CABLE.POWER.AC.1830mm USA type
810618301090	CABLE,POWER,AC,1830mm Europe type
810618301050	CABLE.POWER.AC.1830mm UK type
810618301170	CABLE.POWER,AC,1830mm Australia type
810618301030	CABLE.POWER.AC.1830mm Japan type

Assured Systems

Assured Systems is a leading technology company with over 1,500 regular clients in 80 countries, deploying over 85,000 systems to a diverse customer base in 12 years of business. We offer high-quality and innovative rugged computing, display, networking and data collection solutions to the embedded, industrial, and digital-out-of-home market sectors.

US

sales@assured-systems.com

Sales: +1 347 719 4508
Support: +1 347 719 4508

1309 Coffeen Ave
Ste 1200
Sheridan
WY 82801
USA

EMEA

sales@assured-systems.com

Sales: +44 (0)1785 879 050
Support: +44 (0)1785 879 050

Unit A5 Douglas Park
Stone Business Park
Stone
ST15 0YJ
United Kingdom

VAT Number: 120 9546 28
Business Registration Number: 07699660