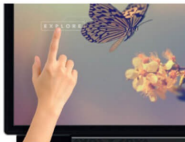


Interactive Flat Panel Displays IFM65TH752/4

VESTEL

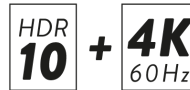


Key Features



Simultaneous Smooth writing Multi - Touch

10 point touch support detects multiple touch points, enhancing the possibility of collaborative work. The screens also provide a precise and user friendly writing experience with its smooth surface.



HDR10 & 4K HDMI @60Hz

Displays supporting HDR10 allows HDR based content to be shown, giving a brighter and more dynamic picture. This is further enhanced due to the support of 4K 60Hz, allowing ultra sharp, smooth Video content to be presented.



Anti Glare Tempered Glass

Prevents light reflection and provides smooth touch performance with anti glare technology. Robust design with toughened glass material to avoid any damage to the screen



Collaborate, Annotate with Oktopus

Collaborate: View lessons, respond, share annotations, and take notes using any tablet or laptop Anntate: Works over browser content & existing applications Poll: Pose questions and gain immediate participant feedback, displaying results instantly.

Panel

Screen Size	65"	Panel Technology	Direct-Type LED
Backlight Type	350 cd/m ²	Native Resolution	UHD: 3840 x 2160 - HDR10
Contrast Ratio (typical)	1200:1	Dynamic Contrast Ratio	35000:1
Panel Life Time (Min.)	30000 Hrs	Response Time (typical)	9 ms
Active Area (H x V)	1428 x 804 mm	Pixel Pitch (H x V)	0.372 x 0.372 mm
PPI (pixel per inch)	68	Viewing Angle	178° Vert., 178° Hor. (89U/89D/89L/89R) @ CR>10
Color Value	1.07 B (10-bit)	Screen Treatment	2H
Haze Level	8%	Refresh Rate	60 Hz
Front Type	Black Super Narrow Bezel	Orientation	Horizontal
Operation Hours	16/7	Area of Usage	Indoor

Built-in System

Mainboard Model	17MB135VS
-----------------	-----------

Monitor Connectivity

RGB Input	VGA(DE-15F)	RGB Output	N/A
Video Input	4xHDMI2.0, 2xUSB2.0, USB2.0(Internal)	Video Output	HDMI2.0
Audio Input	Line In L/R	Audio Output	Headphone, Optic SPDIF
External Control	RS232(DE-9F), Ethernet(RJ45), Service(RJ12)	External Sensor	RJ12

Touch Interactivity

Type of Touch Technology	Infrared (IR) Technology	Continuous Touch Points	10 Points
Sensitivity	Any touch with finger, gloved hand or pointer	Connectivity	HID, TUIO, Flash
Compatibility	Windows®7, Windows®8, Windows®10, Vista, XP, Mac® OS, Linux, Androi	Orientation	Landscape Support
Calibration	No need	Accuracy	90%
Reporting Rate	Up to 450 fps	Glass Type	Anti Glared (AG), 4mm tempered
Frame Rate	Up to 450 fps	Communication	USB2.0
Power Supply Mode	USB	Supply Voltage	DC 5V +/- 5%
Average Current	400 mA	Response Time	10 ms
Touch Accuracy	+/-2mm (over 90% area)	Touch Durability	Unlimited
HID Compatibility	Yes USB	Object Sizes for Touch	5 mm

Mechanical

Product Dimensions (WxDxH)	1507 x 118 x 882 mm	Package Dimensions (WxDxH)	1756 x 265 x 1100 mm
Product Weight	37.2 kg	Package Weight	48.3 kg
Vesa Mounting	400 x 400 mm	Bezel Width	B:38 T:38 L/R:38 mm

Environmental Conditions

Operating Temperature	+40°C / 0°C	Operating Humidity	90%
-----------------------	-------------	--------------------	-----

Power

Power Supply	110 VAC - 240 VAC
--------------	-------------------

Power Consumption

Typical	194 W	Maximum	220 W
Deep Standby	≤ 0.5W		

Features

Main Features	USB-Autoplay, Auto-switch on Failover, Control Button Lock, HDMI Wake-Up	Mechanical Features	IR Touch, Joystick, IR Extender Support, Rocker Switch, Detachable power cable, Carrying handles, Detachable logo positioning, Cable Holders
Optional Features	OPS Compliance	Speaker	2x8W

Accessory

Standard	QSG, IB, Power Cord, Remote Control, RC Battery, Mounting Kit, Extension Brackets, IR Extender Cable
----------	---

Certification

Safety	YES	EMC	YES
CE	YES	Reability Approval	YES

Assured Systems

Assured Systems is a leading technology company with over 1,500 regular clients in 80 countries, deploying over 85,000 systems to a diverse customer base in 12 years of business. We offer high-quality and innovative rugged computing, display, networking and data collection solutions to the embedded, industrial, and digital-out-of-home market sectors.

US

sales@assured-systems.com

Sales: +1 347 719 4508
Support: +1 347 719 4508

1309 Coffeen Ave
Ste 1200
Sheridan
WY 82801
USA

EMEA

sales@assured-systems.com

Sales: +44 (0)1785 879 050
Support: +44 (0)1785 879 050

Unit A5 Douglas Park
Stone Business Park
Stone
ST15 0YJ
United Kingdom

VAT Number: 120 9546 28
Business Registration Number: 07699660