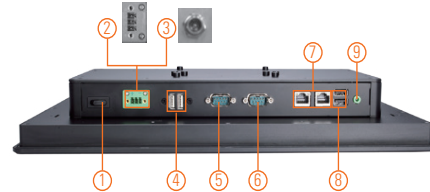
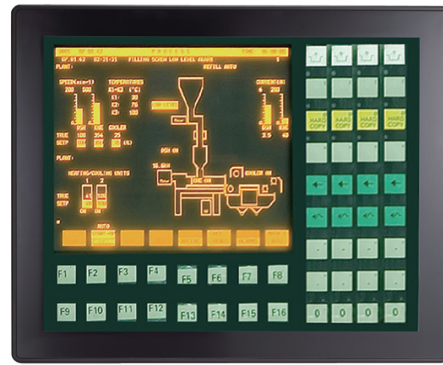
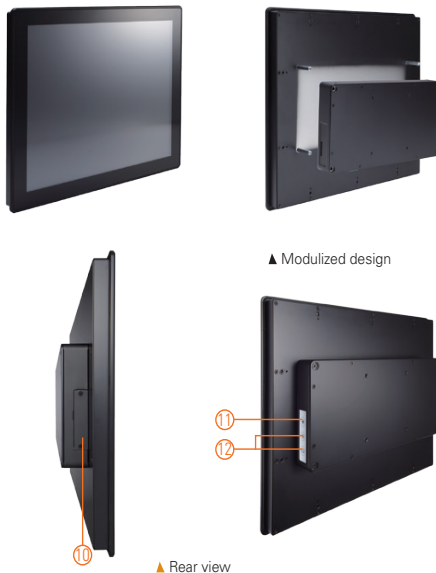


GOT3177T-834

17" SXGA TFT Flat Bezel Touch Panel Computer with Intel® Celeron® Processor J1900 (-10°C to +50°C)

Features

- 17" SXGA TFT flat resistive touch
- Fanless and modularized design
- Intel® Bay Trail-D Celeron® processor J1900
- 2.5" 7/9.5 mm SATA HDD & CFast™ or mSATA
- WLAN/3G module & antenna (optional)
- 2 GbE LAN, 2 USB 2.0, 2 USB 3.0 and 2 COM
- IP65 front bezel
- Supports panel mount and optional VESA arm/desktop stand/wall mount
- -10°C to +50°C wide operating temperature range



1. Power switch
2. Terminal block for DC power input or
3. Screw conn. w/ AC power adapter
4. USB 2.0 x 2
5. COM 1 (RS-232/422/485)
6. COM 2 (RS-232/422/485)
7. Ethernet x 2
8. USB 3.0 x 2
9. Audio (Line-out)
10. CFast™ slot
11. Backlight switch
12. Brightness adjustment



Introduction

The GOT3177T-834 adopts a 17-inch SXGA LCD and supports Intel® Bay Trail-D processor. By supporting a wide range operating temperature from -10°C to +50°C, it can be used in harsh environment. The rugged industrial panel PC supports low power Intel® Celeron® processor J1900. It also provides 2 PCI Express Mini Card slots for 3G, wireless network connectivity. The 17" flat front bezel touch panel computer is suitable for transportation, heavy-duty industry, smart factory automation, and oil pipe monitoring systems.

Wide Temperature Range Support

The Intel® Bay Trail-based GOT3177T-834 applies unique extended temperature technology with wide temperature range support as well as fanless operation. It also has a compact design for harsh environment.

WLAN Antenna Support (optional)

The 17" SXGA IP65 industrial panel PC, GOT3177T-834, provides 2 PCI Express Mini Card slots and WLAN/3G antennas for wireless network connectivity.

Specifications

Front Bezel	IP65 front bezel	
LCD Panel	Display Type	17" SXGA TFT LCD
	Brightness (cd/m ²)	350 nits
	Resolution	1280 x 1024
Main System	CPU	Intel® Bay Trail-D Celeron® processor J1900 4C@2.0GHz
	Chipset	SoC Intergrated
	System Memory	1 x 204-pin DDR3L-1333/1600 SO-DIMM, up to 8GB
	BIOS	AMI UEFI BIOS
	Storage	1 x 2.5" 7/9.5 mm SATA HDD 1 x CFast™ or 1 x mSATA
	Watchdog Timer	255 levels, 0 ~ 255 sec.
	Onboard Graphics	Integrated Intel® HD Graphics

Assured Systems

Assured Systems is a leading technology company with over 1,500 regular clients in 80 countries, deploying over 85,000 systems to a diverse customer base in 12 years of business. We offer high-quality and innovative rugged computing, display, networking and data collection solutions to the embedded, industrial, and digital-out-of-home market sectors.

US

sales@assured-systems.com

Sales: +1 347 719 4508
Support: +1 347 719 4508

1309 Coffeen Ave
Ste 1200
Sheridan
WY 82801
USA

EMEA

sales@assured-systems.com

Sales: +44 (0)1785 879 050
Support: +44 (0)1785 879 050

Unit A5 Douglas Park
Stone Business Park
Stone
ST15 0YJ
United Kingdom

VAT Number: 120 9546 28
Business Registration Number: 07699660