



Industrial Solutions Partner!

SSF1916-A / SSH1916-A

19.1" Resizing LCD Display, Brightness is 1200 nits, LED backlight, 1920x388 ultra wide aspect ratio 16:3.2

SSF/SSH 1916-A is an innovative ultra-wide, LED backlight LCD module. It provides LCD panel with specific ratios for digital signage, public transportation, exhibition hall, department store, and vending machine applications.

Key Features

- Resizing LCD
- Ultra Wide Screen (16 : 3.2)
- LED Backlight
- High Brightness 1200nits
- Low Power Consumption
- Wide Viewing Angle
- High Uniformity
- Wide Dimming



Specifications

Preliminary

Model No.	SSF1916-A	SSH1916-A
Description	19.1" Resizing LCD Display, 1200nits, LED backlight, 1920x388	
Display Area	476.6x 96.3 mm	
Brightness	1200nits	
Resolution	1920 x 388	
Aspect Ratio	16 : 3.2	
Contrast Ratio	3000:1	
Pixel Pitch (mm)	0.248 x 0.248	
Viewing Angle	178°(H), 178°(V)	
Display Colors	16.7M	
Response Time (Typical)	25 ms	
Power Consumption	17.9W / 22.9W	
Dimensions (mm)	497.6 x 121.3 x 16.55 mm	
Weight (Net)	0.8Kg	
LED Driving Board	LID19A	
Control Board (Optional)	<input type="checkbox"/> AD2662GD <input type="checkbox"/> AD2662GDHMVAR	
<input type="checkbox"/> AD2662GD	VGA+DVI (Optional S-Video/ Component / Audio)	
<input type="checkbox"/> AD2662GDHMVAR	VGA + DVI + HDMI (Optional AV/ S-Video / Component / Audio)	
F / R Control Button	<input type="checkbox"/> 5 Key <input type="checkbox"/> 4 Key	
<input type="checkbox"/> 5 Key	Power Switch, Menu, Select (+,-), Auto	
<input type="checkbox"/> 4 Key	Power Switch, Menu, Select (+,-),	
OSD Menu	Brightness, Contrast, H/V Position, Color, Phase, Clock...	
Optional	<input type="checkbox"/> AOT <input type="checkbox"/> Touch Screen	

Specifications are subject to change without notice.

All brands or product names are trademarks or registered trademarks of their respective companies.

SSF= Panel+ LED Driving Board

SSH= Panel+ LED Driving Board + Control Board

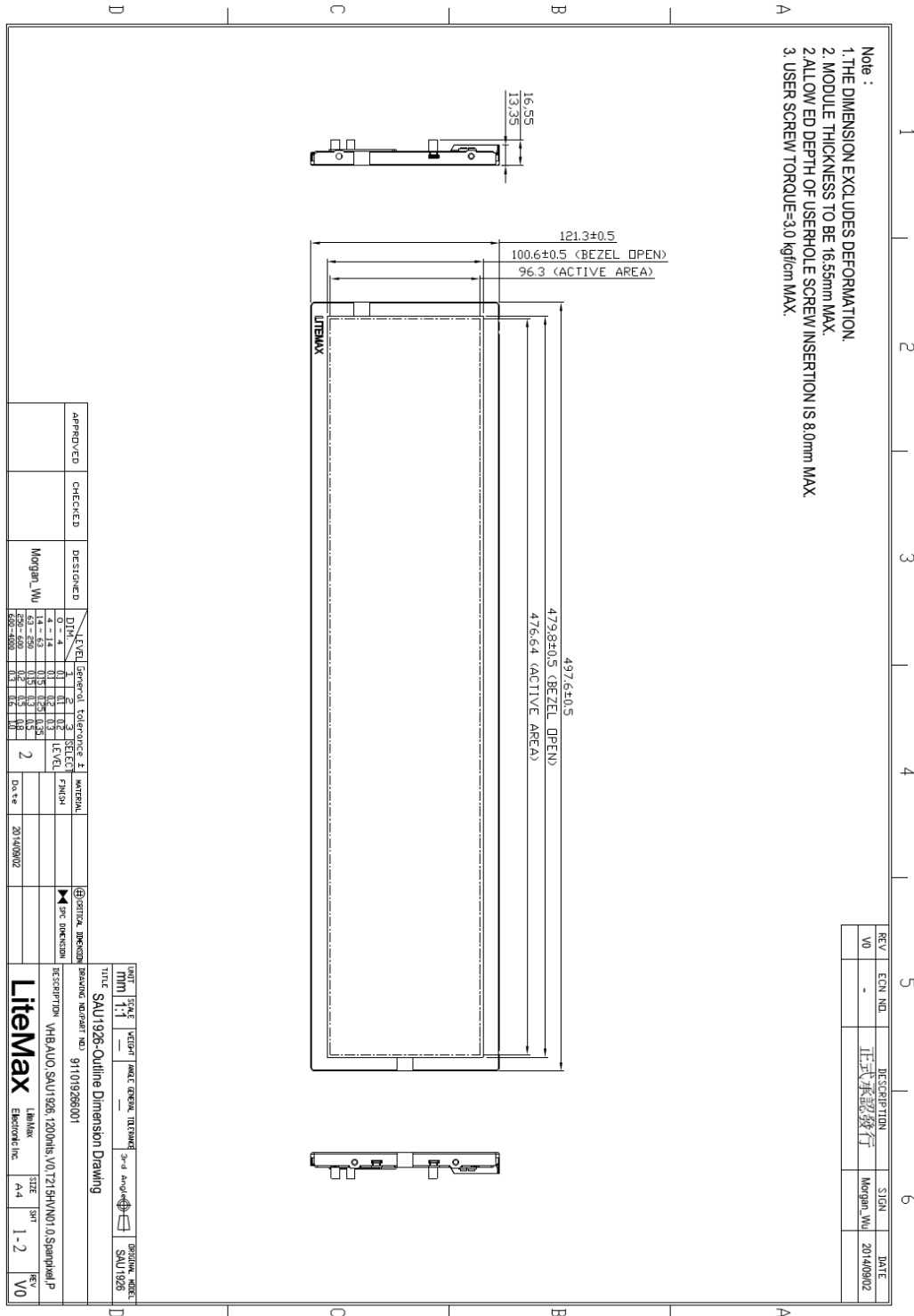


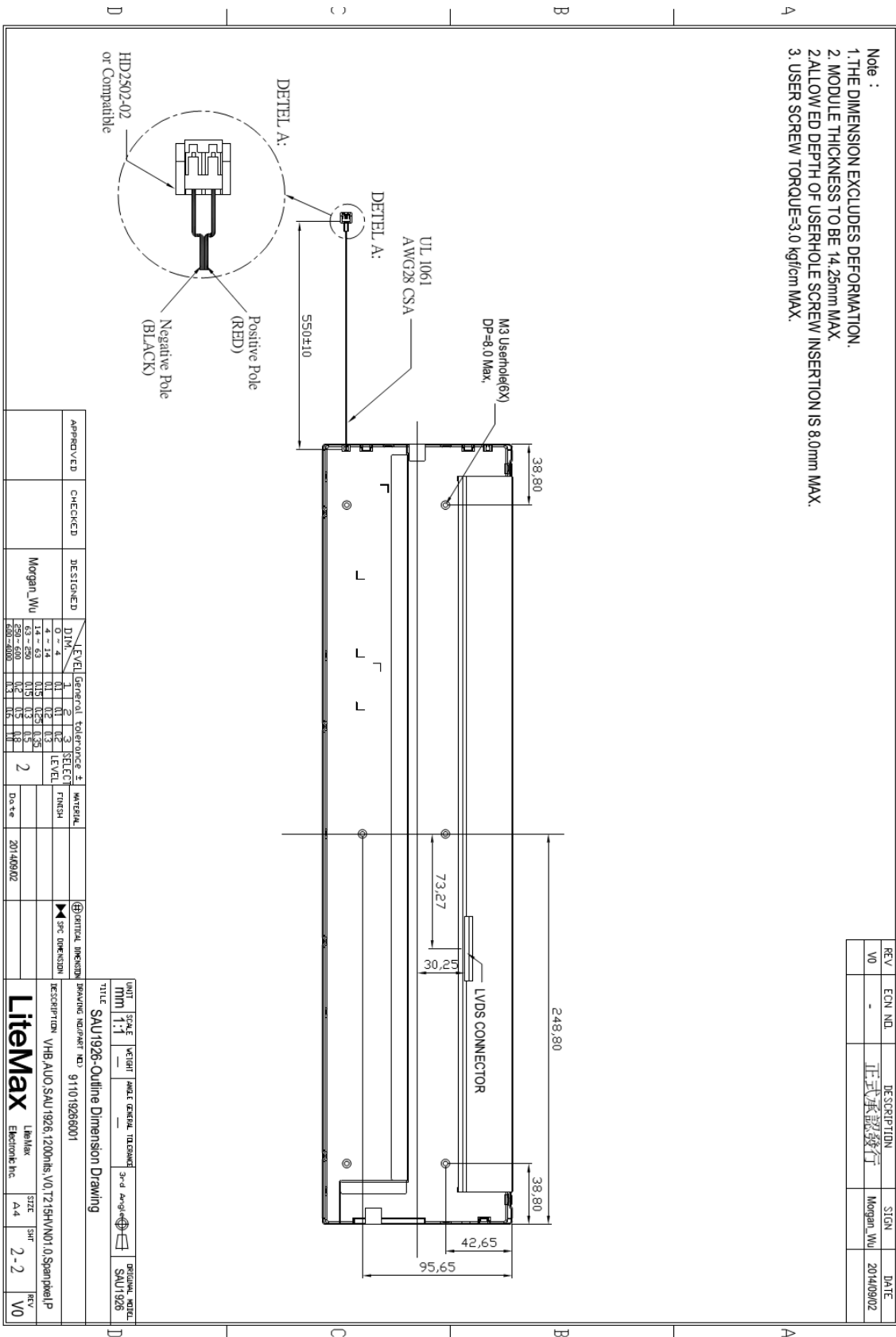
Industrial Solutions Partner!

Mechanical Drawing

Panel Outline Dimensions

Unit: mm





Note :
 1. THE DIMENSION EXCLUDES DEFORMATION.
 2. MODULE THICKNESS TO BE 14.25mm MAX.
 3. ALLOWED DEPTH OF USERHOLE SCREW INSERTION IS 8.0mm MAX.
 3. USER SCREW TORQUE=3.0 kgf/cm MAX.

REV	EON NDL	DESCRIPTION	SION	DATE
V0	-	正式承認發行	Morgan_Wu	2014/09/02

APPROVED	CHECKED	DESIGNED	DRAWN	DATE
		Morgan_Wu		2014/09/02

LEVEL	TOLERANCE	SELECT	FINISH
1	±0.1	1	
2	±0.2	2	
3	±0.3	3	
4	±0.4	4	
5	±0.5	5	
6	±0.6	6	
7	±0.7	7	
8	±0.8	8	
9	±0.9	9	
10	±1.0	10	

UNIT	SCALE	WEIGHT	SCALE GENERAL	TOLERANCE	3rd Party	DIGITAL MODEL
MM	1:1					SAU1926

TITLE	ISSUING NO./PART NO.	DATE	REV
SAU1926-Outline Dimension Drawing	91101926601	2014/09/02	V0

DESCRIPTION: VHB AVO SAU1926, 1200pins, V0, T2.15H/MN1.0, Spanning IP
 Litemax Electronic Inc. A-4 2-2



Industrial Solutions Partner!

Ordering Information

Part Number	Description
SSF1916-ANN-A01	19",1200nits,1920*388,LID19A,V01 (5 in 1)
SSH1916-ANN-G01	19",1200nits,1920*388,LID19A, AD2662GM,DC 12V input,V01 (5 in 1)

Optional Accessories

Part Number	Description
840612051210	ADAPTER,AC/DC,12V/5.4A,65W,Atech OEM A065112-TDx,4P SLIDING CAP,P
810618301010	CABLE.POWER.AC.1830mm USA type
810618301090	CABLE.POWER.AC,1830mm Europe type
810618301050	CABLE.POWER.AC.1830mm UK type
810618301170	CABLE.POWER.AC,1830mm Australia type
810618301030	CABLE.POWER.AC.1830mm Japan type

Assured Systems

Assured Systems is a leading technology company with over 1,500 regular clients in 80 countries, deploying over 85,000 systems to a diverse customer base in 12 years of business. We offer high-quality and innovative rugged computing, display, networking and data collection solutions to the embedded, industrial, and digital-out-of-home market sectors.

US

sales@assured-systems.com

Sales: +1 347 719 4508
Support: +1 347 719 4508

1309 Coffeen Ave
Ste 1200
Sheridan
WY 82801
USA

EMEA

sales@assured-systems.com

Sales: +44 (0)1785 879 050
Support: +44 (0)1785 879 050

Unit A5 Douglas Park
Stone Business Park
Stone
ST15 0YJ
United Kingdom

VAT Number: 120 9546 28
Business Registration Number: 07699660