



Industrial Solutions Partner!

SSD1922

19" Resizing LCD Display, Brightness is 500 nits, LED backlight, 1920x388 ultra wide aspect ratio 16:3.2

SSD1922 is an innovative ultra-wide, LED backlight LCD display. It provides LCD panel with specific ratios for digital signage, public transportation, exhibition hall, department store, vending machine and industrial applications.

Key Features

- Resizing LCD
- Ultra Wide Screen (16 : 3.2)
- LED Backlight
- High Brightness 500nits
- Low Power Consumption
- Wide Viewing Angle
- High Uniformity
- Wide Dimming



Specifications

Preliminary

Model No.	SSD1922
Description	19" Resizing LCD Display, 500nits, LED backlight, 1920x388
Display Area	476.6x 96.3 mm
Brightness	500nits
Resolution	1920 x 388
Aspect Ratio	16 : 3.2
Contrast Ratio	3700:1
Pixel Pitch (mm)	0.248 x 0.248
Viewing Angle	178°(H), 178°(V)
Display Colors	16.7M
Response Time (Typical)	16 ms
Power Consumption	22.5W
Dimensions (mm)	497.7x125.2x46.5mm
Weight (Net)	2.2Kg
LED Driving Board	LID21A06
Control Board (Optional)	<input type="checkbox"/> AD2662GD
<input type="checkbox"/> AD2662GDVAR	VGA+DVI (Optional S-Video/ Component / Audio)
F / R Control Button	<input type="checkbox"/> 5 Key <input type="checkbox"/> 4 Key
<input type="checkbox"/> 5 Key	Power Switch, Menu, Select (+,-), Auto
<input type="checkbox"/> 4 Key	Power Switch, Menu, Select (+,-),
OSD Menu	Brightness, Contrast, H/V Position, Color, Phase, Clock...
Optional	<input type="checkbox"/> AOT <input type="checkbox"/> Touch Screen

Specifications are subject to change without notice.

All brands or product names are trademarks or registered trademarks of their respective companies.

SSD = Panel + LED Driving Board + Control Board + Housing

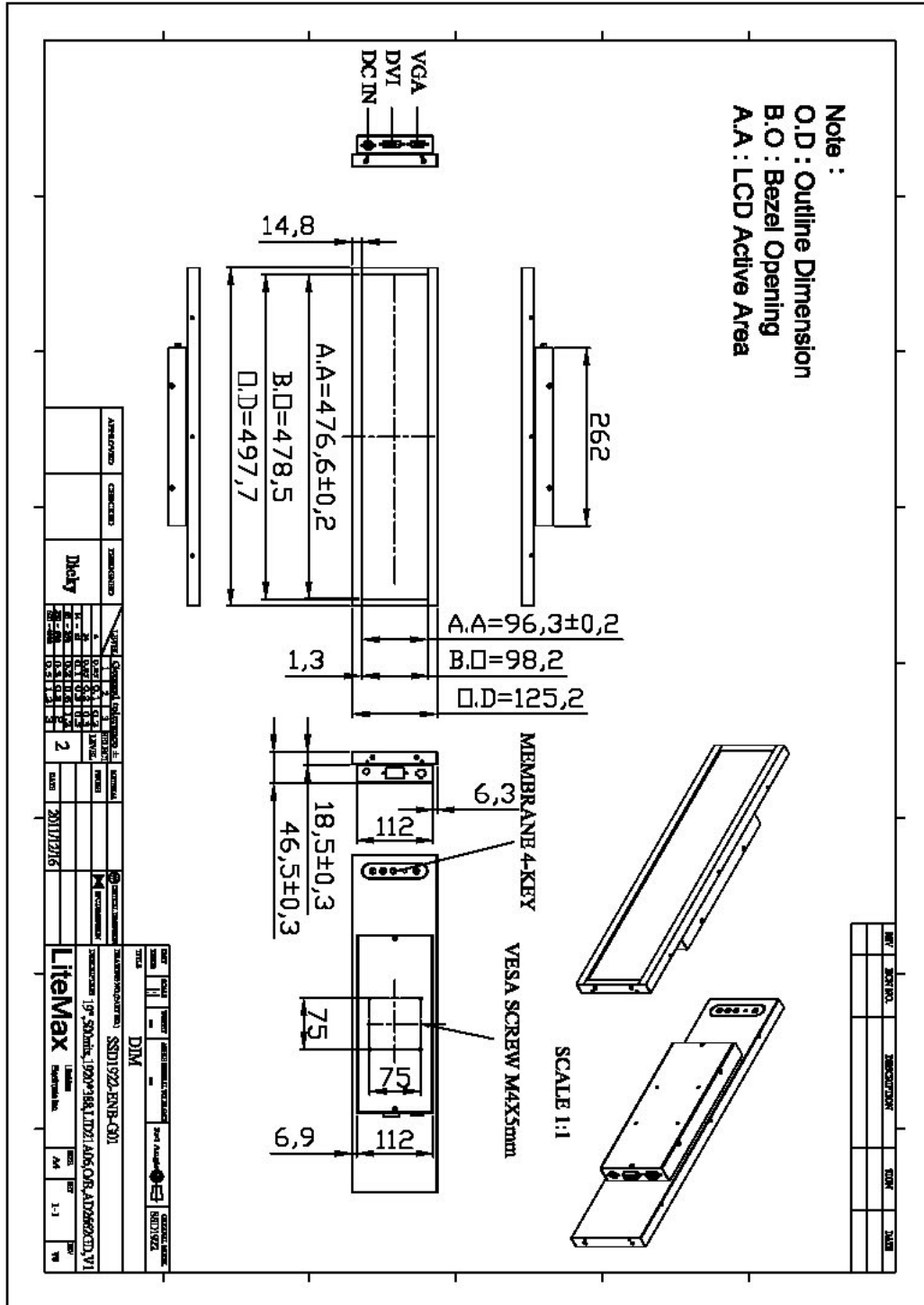


Industrial Solutions Partner!

Mechanical Drawing

Panel Outline Dimensions

Unit: mm





Industrial Solutions Partner!

Ordering Information

Part Number	Description
SSD1922-ENB-G01	19",500nits,1920*388,LID21A06,O/B,AD2662GD,DC 12V,V01

Optional Accessories

Part Number	Description
840612051210	ADAPTER,AC/DC,12V/5.4A,65W,Atech OEM A065112-TDx,4P SLIDING CAP,P
810618301010	CABLE.POWER.AC.1830mm USA type
810618301090	CABLE.POWER.AC,1830mm Europe type
810618301050	CABLE.POWER.AC.1830mm UK type
810618301170	CABLE.POWER,AC,1830mm Australia type
810618301030	CABLE.POWER.AC.1830mm Japan type

Assured Systems

Assured Systems is a leading technology company with over 1,500 regular clients in 80 countries, deploying over 85,000 systems to a diverse customer base in 12 years of business. We offer high-quality and innovative rugged computing, display, networking and data collection solutions to the embedded, industrial, and digital-out-of-home market sectors.

US

sales@assured-systems.com

Sales: +1 347 719 4508
Support: +1 347 719 4508

1309 Coffeen Ave
Ste 1200
Sheridan
WY 82801
USA

EMEA

sales@assured-systems.com

Sales: +44 (0)1785 879 050
Support: +44 (0)1785 879 050

Unit A5 Douglas Park
Stone Business Park
Stone
ST15 0YJ
United Kingdom

VAT Number: 120 9546 28
Business Registration Number: 07699660