



Industrial Solutions Partner!

**SSD1915**

**19" Resizing LCD, 1000 nits LED backlight, 1680x342 ultra wide aspect ratio 16:3**

SSD1915 is an innovative ultra-wide, sunlight readable, LED backlight LCD display. It provides LCD panel with specific ratios for digital signage, public transportation, exhibition hall, department store, vending machine and industrial applications. Incorporating with A.D. control board and backlight design, it is high brightness and sunlight readable panel, can display high-quality video with energy-efficient.

**Key Features**

- Resizing LCD
- Ultra Wide Screen (16 : 3)
- Sunlight Readable
- LED Backlight
- High Brightness 1000 nits
- Wide Viewing Angle
- Low Power Consumption
- High Uniformity (90%)
- Wide Dimming
- Life Expectancy (70,000hrs)
- Slim Bezel



**Specifications**

Preliminary

<b>Model No.</b>	<b>SSD1915</b>
<b>Description</b>	19" Resizing LCD, 1000 nits LED backlight
<b>Display Area</b>	473.76 x 96.44 mm
<b>Brightness</b>	1,000 cd/m <sup>2</sup>
<b>Resolution</b>	1680 x 342
<b>Aspect Ratio</b>	16 : 3
<b>Contrast Ratio</b>	2000:1
<b>Pixel Pitch (mm)</b>	0.282 x 0.282
<b>Viewing Angle</b>	178°(H), 178°(V)
<b>Display Colors</b>	16.7M
<b>Response Time (Typical)</b>	20 ms
<b>Sync</b>	LVDS
<b>Power Consumption</b>	25W
<b>Dimensions (mm)</b>	496.6 x 126 x 57.3
<b>Weight (Net)</b>	2.3kg
<b>LED Driving Board</b>	<b>LID19A01</b>
<b>Control Board (Optional)</b>	<b>AD5621G / AD5621GA / AD2662GD / AD2662GDVAR</b>
<input type="checkbox"/> AD5621G/AD5621GA	VGA / VGA + Audio
<input type="checkbox"/> AD2662GD	VGA + DVI
<input type="checkbox"/> AD2662GDVAR	VGA + DVI (Optional AV/ S-Video / Component / Audio)
<input type="checkbox"/> Others	
<b>F / R Control Button</b>	5 Key / 4 Key
<input type="checkbox"/> 4 Key	Power Switch, Menu, Select (+,-),
<input type="checkbox"/> 5 Key	Power Switch, Menu, Select (+,-),Auto
<b>OSD Menu</b>	Brightness, Contrast, H/V Position, Color, Phase, Clock...
<b>Optional</b>	<input type="checkbox"/> Touch Screen

Specifications are subject to change without notice.  
All brands or product names are trademarks or registered trademarks of their respective companies.

**SSD**= Panel+ LED Driving Board + Control Board

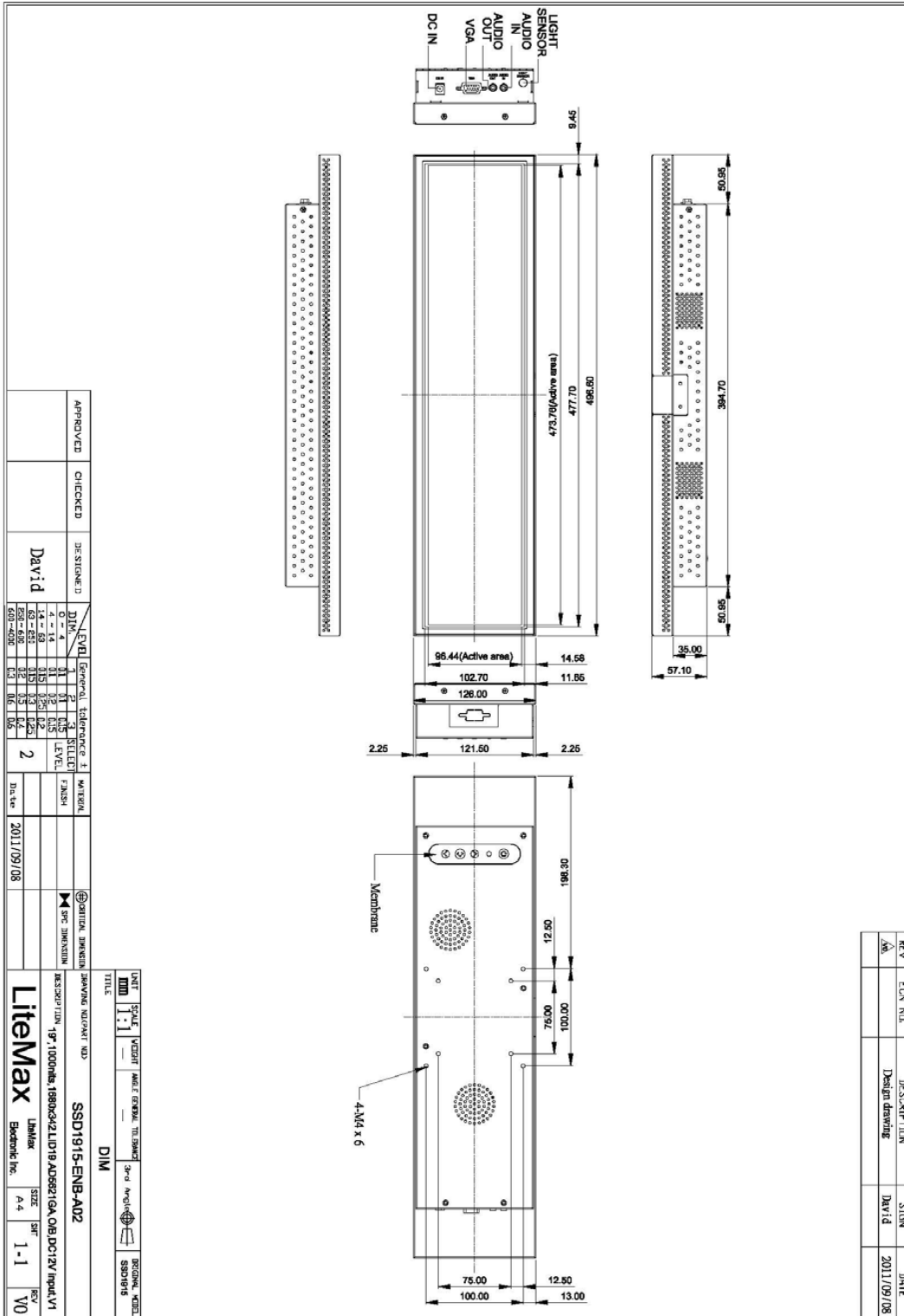


Industrial Solutions Partner!

**Mechanical Drawing**

**Outline Dimensions**

Unit: mm





*Industrial Solutions Partner!*

### Ordering Information

Model Name	Description
SSD1915-ENB-A02	19",1000nits,1680*342,LID19,AD5621GA,O/B,DC12V input,V1

### Optional Accessories

Part Number	Description
840612051100	ADAPTER.12V.5A.60W.EA1050A,P
810618301010	CABLE.POWER.AC.1830mm USA type
810618301090	CABLE,POWER,AC,1830mm Europe type
810618301050	CABLE.POWER.AC.1830mm UK type
810618301170	CABLE.POWER,AC,1830mm Australia type
810618301030	CABLE.POWER.AC.1830mm Japan type

## Assured Systems

Assured Systems is a leading technology company with over 1,500 regular clients in 80 countries, deploying over 85,000 systems to a diverse customer base in 12 years of business. We offer high-quality and innovative rugged computing, display, networking and data collection solutions to the embedded, industrial, and digital-out-of-home market sectors.

### US

[sales@assured-systems.com](mailto:sales@assured-systems.com)

Sales: +1 347 719 4508  
Support: +1 347 719 4508

1309 Coffeen Ave  
Ste 1200  
Sheridan  
WY 82801  
USA

### EMEA

[sales@assured-systems.com](mailto:sales@assured-systems.com)

Sales: +44 (0)1785 879 050  
Support: +44 (0)1785 879 050

Unit A5 Douglas Park  
Stone Business Park  
Stone  
ST15 0YJ  
United Kingdom

VAT Number: 120 9546 28  
Business Registration Number: 07699660