



Industrial Solutions Partner!

SSF0635-E / SSH0635-E

6.2" Resizing LCD, 1000 nits LED backlight, 1024x250 ultra wide aspect ratio 16:4

SSF/SSH 0635-E is an innovative ultra-wide, sunlight readable, LED backlight LCD display. It provides LCD panel with specific ratios for digital signage, public transportation, exhibition hall, department store, vending machine, POS and industrial applications. It is high-quality full color video with energy-efficient.

Key Features

- Resizing LCD
- Ultra Wide Screen (16 : 4)
- LED Backlight
- Brightness 1000 nits
- Low Power Consumption
- High Uniformity
- Slim Bezel



Specifications		Preliminary
Model No.	SSF0635	SSH0635
Description	6.2" Resizing LCD, 1000 nits LED backlight, 1024x250	
Display Area	153.6 x 37.5 mm	
Brightness	1000 cd/m ²	
Resolution	1024 x 250	
Aspect Ratio	16 : 4	
Contrast Ratio	700:1	
Pixel Pitch (mm)	0.15 x 0.15	
Viewing Angle	150°(H), 145°(V)	
Display Colors	262K / 16.7M	
Response Time (Typical)	25ms	
Sync	LVDS	
Power Consumption	3.91W / 8.91W	
Dimensions (mm)	165.75 x 55 x 5.3	
Weight (Net)	0.09Kg	
LED Driving Board	On Board	
Control Board (Optional)	<input type="checkbox"/> AD2662GDHM	
	<input type="checkbox"/> AD2662GDHM VGA+DVI+HDMI	
F / R Control Button	<input type="checkbox"/> 5 Key <input type="checkbox"/> 4 Key	
	<input type="checkbox"/> 4 Key Power Switch, Menu, Select (+,-),	
OSD Menu	Brightness, Contrast, H/V Position, Color, Phase, Clock...	
Optional	<input type="checkbox"/> AOT <input type="checkbox"/> Touch Screen	

Specifications are subject to change without notice.
All brands or product names are trademarks or registered trademarks of their respective companies.

SSF= Panel+ LED Driving Board
SSH= Panel+ LED Driving Board + Control Board

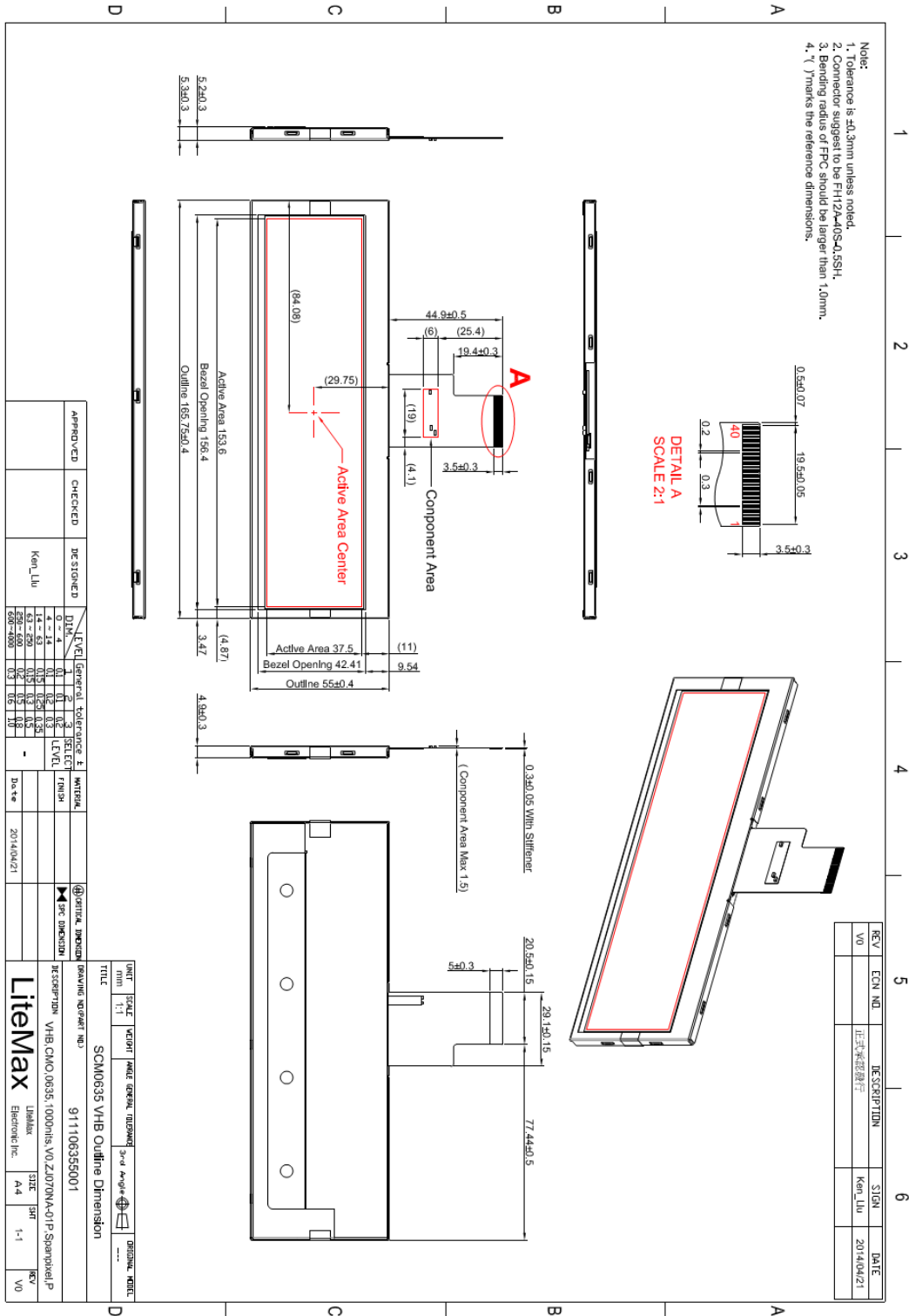


Industrial Solutions Partner!

Mechanical Drawing

Outline Dimensions

Unit: mm





Industrial Solutions Partner!

Ordering Information

Model Name	Description
SSF0635-ENN-A01	6.22",1000nits,1024*250,V1
SSH0635-ENN-G01	6.22",1000nits,1024*250,AD2662GM,DC 12V input,V1

Optional Accessories

Part Number	Description
810618301010	CABLE.POWER.AC.1830mm USA type
810618301090	CABLE,POWER,AC,1830mm Europe type
810618301050	CABLE.POWER.AC.1830mm UK type
810618301170	CABLE.POWER,AC,1830mm Australia type
810618301030	CABLE.POWER.AC.1830mm Japan type

Assured Systems

Assured Systems is a leading technology company with over 1,500 regular clients in 80 countries, deploying over 85,000 systems to a diverse customer base in 12 years of business. We offer high-quality and innovative rugged computing, display, networking and data collection solutions to the embedded, industrial, and digital-out-of-home market sectors.

US

sales@assured-systems.com

Sales: +1 347 719 4508
Support: +1 347 719 4508

1309 Coffeen Ave
Ste 1200
Sheridan
WY 82801
USA

EMEA

sales@assured-systems.com

Sales: +44 (0)1785 879 050
Support: +44 (0)1785 879 050

Unit A5 Douglas Park
Stone Business Park
Stone
ST15 0YJ
United Kingdom

VAT Number: 120 9546 28
Business Registration Number: 07699660