



Industrial Solutions Partner!

SSD3840

38" Resizing Local Dimming LCD, 2000 nits LED Ultra High Brightness, 1920x502 ultra wide aspect ratio 16:4.2

SSD3840 is an innovative ultra-wide, sunlight readable, Ultra High Brightness LED backlight & Local Dimming LCD display. It provides LCD panel with specific ratios for digital signage, public transportation, exhibition hall, department store, vending machine and industrial applications. Incorporating with A.D. control board and backlight design, it is high brightness and sunlight readable panel, can display high-quality video with energy-efficient.

Key Features

- Resizing LCD
- Ultra Wide Screen (16 : 4.2)
- Sunlight Readable
- LED Backlight
- Ultra High Brightness 2000 nits
- Local Dimming
- Low Power Consumption
- Wide Dimming
- Slim Bezel



Specifications

V1

Model No.	SSD3840
Description	38" Resizing LCD, 2000 nits LED Ultra High Brightness, 1920x502
Display Area	930.2 x 243.2 mm
Brightness	2,000 cd/m ²
Resolution	1920 x 502
Aspect Ratio	16 : 4.2
Contrast Ratio	5600:1
Pixel Pitch (mm)	0.4845 x 0.4845
Pixel Pre Inch (PPI)	52
Viewing Angle	176°(H), 176°(V)
Display Colors	16.7M
Response Time (Typical)	6.5 ms
Sync	LVDS
Power Consumption (Local Dimming)	Black (100%) => 23W Black (50%) & White (50%)=> 75W White (100%)=> 130W
Dimensions (mm)	967.6 x 279.4 x 61.3
Weight (Net)	10.5Kg
LED Driving Board	LID38
Control Board (Optional)	AD2662GD / AD2662GDVAR
<input type="checkbox"/> AD2662GD	VGA + DVI
<input type="checkbox"/> AD2662GDVAR	VGA + DVI (Optional AV/ S-Video / Component / Audio)
<input type="checkbox"/> Others	
F / R Control Button	5 Key / 4 Key
<input type="checkbox"/> 4 Key	Power Switch, Menu, Select (+,-),
<input type="checkbox"/> 5 Key	Power Switch, Menu, Select (+,-),Auto
OSD Menu	Brightness, Contrast, H/V Position, Color, Phase, Clock...
Optional	<input type="checkbox"/> Touch Screen

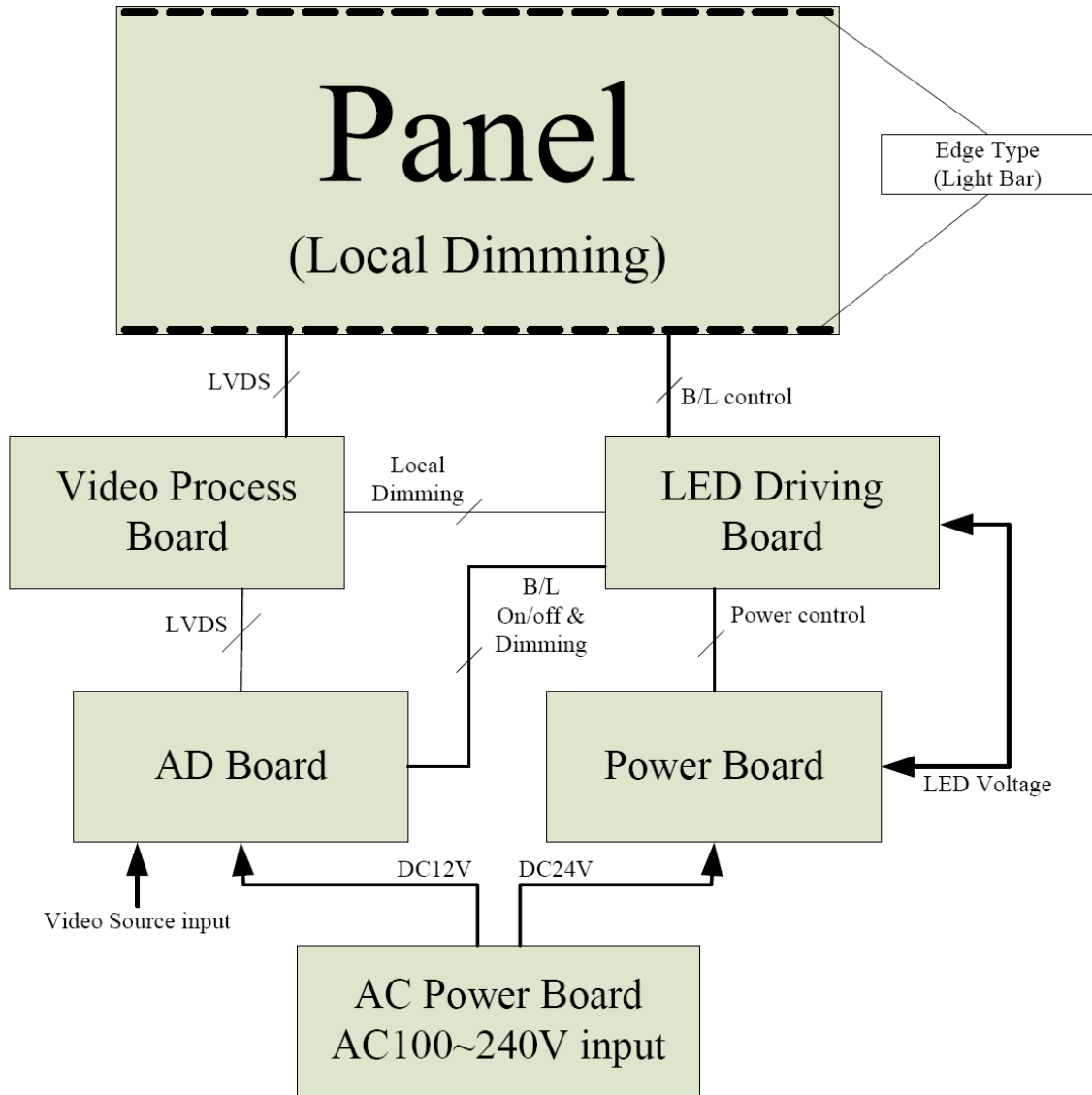
Specifications are subject to change without notice.
All brands or product names are trademarks or registered trademarks of their respective companies.

SSH= Panel+ LED Driving Board + Control Board



Industrial Solutions Partner!

Block Diagram



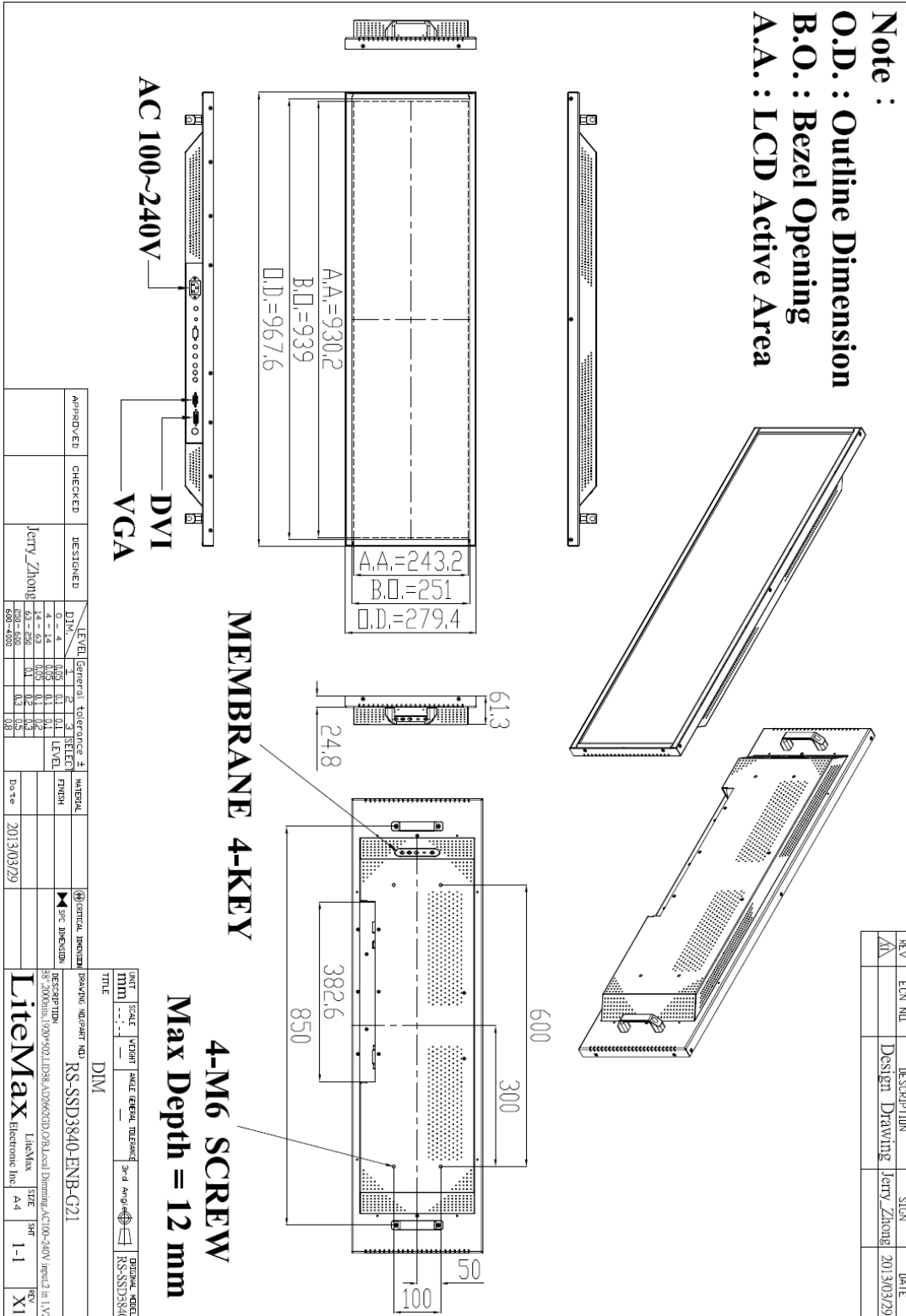


Industrial Solutions Partner!

Mechanical Drawing

Outline Dimensions

Unit: mm





Industrial Solutions Partner!

Ordering Information

Model Name	Description
SSD3840-ENB-G21	38",2000nits,1920*502,LID38,AD2662GD,O/B,Local Dimming,AC100~240V input,2 in 1,V2

Optional Accessories

Part Number	Description
810618301010 (Optional)	CABLE.POWER.AC.1830mm.(US Type).3PIN PLUG TO SOCKET.SVT(SPT-2)18AWG 3C BLACK,P.
810618301090 (Optional)	CABLE,POWER,AC,1830mm.(EU Type) 3PIN PLUG TO.SOCKET,H05VV-F 3G.0.75MMSQ BLACK,P
810618301050 (Optional)	CABLE,POWER,AC,1830mm.UK(FUSE) 3PIN PLUG TO.SOCKET,H05VV-F 3C(3G) 0.75MMSQ BLACK,P
810618301170 (Optional)	CABLE.POWER,AC,1830mm. (AU Type) 3PIN PLUG TO 2P SOCKET.LTSA 0.75MMSQ BLACK,P
810618301030 (Optional)	CABLE.POWER.AC.1830mm.(JP Type).2PIN PLUG Y TERMINAL TO. SOCKET.VCTF 3C 0.75MMSQ BLACK,P

Assured Systems

Assured Systems is a leading technology company with over 1,500 regular clients in 80 countries, deploying over 85,000 systems to a diverse customer base in 12 years of business. We offer high-quality and innovative rugged computing, display, networking and data collection solutions to the embedded, industrial, and digital-out-of-home market sectors.

US

sales@assured-systems.com

Sales: +1 347 719 4508
Support: +1 347 719 4508

1309 Coffeen Ave
Ste 1200
Sheridan
WY 82801
USA

EMEA

sales@assured-systems.com

Sales: +44 (0)1785 879 050
Support: +44 (0)1785 879 050

Unit A5 Douglas Park
Stone Business Park
Stone
ST15 0YJ
United Kingdom

VAT Number: 120 9546 28
Business Registration Number: 07699660