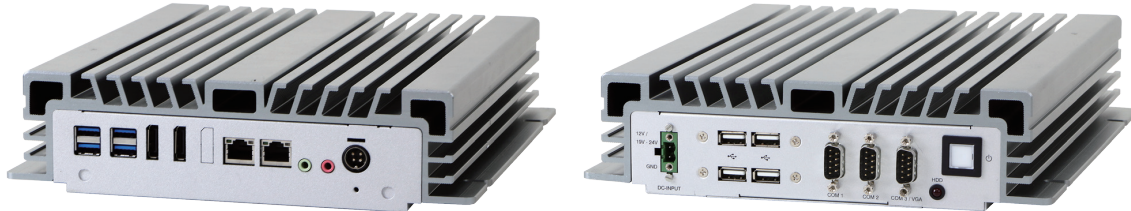


BPC-5080

Arestech

Fanless Embedded Box PC with 8th Generation Coffee Lake
6 Cores Intel® Core™ i7/i5/i3 Processor & Multiple I/O



Features

- 8 Generation Intel® Core™ i7 Processor up to 4.0 GHz
- DDR4 2400 / 2666 MHz SO-DIMM up to 32 GB
- 2 M.2 and 2.5" SATA III HDD & RAID 0/1 (Option)
- Display Port and VGA (Triple Display Output)
- -20 ~ 60° C Operating Temperature

Applications

- Embedded Digital Signage Control Systems
- Factory Automation
- Image Processing
- Machine Vision and Montion Control
- Machine Automation

→ Packing List

Description
1 x BPC-5080
1 x Power Adaptor
1 x Power Cord

→ Optional Items

Part No.	Description
i7-8700T	Intel® 8th Gen Core™ i7-8700T(12M Cache, 4.00 GHz)
i5-8500T	Intel® 8th Gen Core™ i5-8500T(9M Cache, up to 3.50 GHz)
i3-8100T	Intel® 8th Gen Core™ i3-8100T (6M Cache, 2.40 GHz)
G5400T	Intel® Pentium™ G5400T (4M Cache, 3.10 GHz)
G4900T	Intel® Celeron™ G4900T (2M Cache, 2.90 GHz)
AWD-WF001	wifi 802.11 b/g/n (1T1R) + 1 antenna , Half size
AWD-WF003	wifi 802.11 a/b/g/n/ac/BT4.0 (2T2R) + 2 antenna(dual band), Half size
AWD-WF004	wifi 802.11 b/g/n/BT4.0 (1TR) + 2 antenna(dual band), M.2 2230 type
AWD-WF005	wifi 802.11 a/b/g/n/ac/BT4.0 (2T2R) + 2 antenna(dual band), M.2 2230 type
AWD-3G002	3G UC20-G (HSPA+) + 1 antenna, Full size with SIM socket
AWD-4G001	4G(LTE) EC20-E+ 2 antenna, Full size with SIM socket
AWD-4G002	4G(LTE) EC25-J+ 2 antenna, Full size with SIM socket

→ Ordering Information

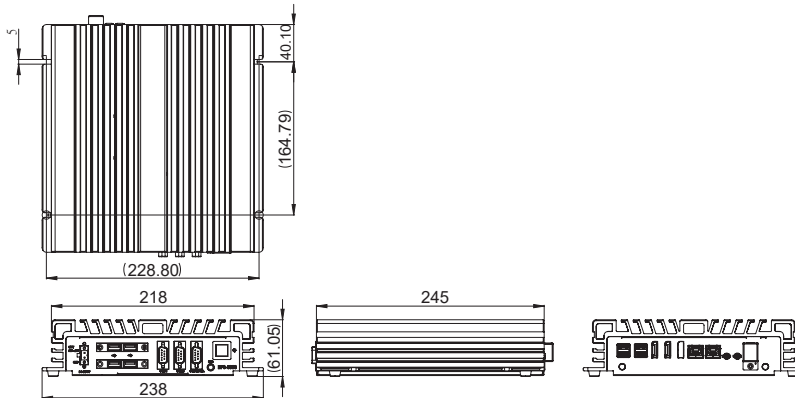
Part No.	Description
BPC-5080-1A1	Intel® 8th Gen Core™ i LGA1151 CPU, Q370, 2 DDR4 memory, 4 USB3.1, 4xUSB2.0, 2 RS-232/422/485, 2 GbE, 3 DP, RAID 0/1, Line out, Mic In, DC 12/19~28V, Phoenix Connector
BPC-5080-2A1	Intel® 8th Gen Core™ i LGA1151 CPU, H310, 2 DDR4 memory, 4 USB3.1, 4xUSB2.0, 2 RS-232/422/485, 2x GbE, 1 VGA, 2 DP, Line out, Mic In, DC 12/19~28V, Phoenix Connector

www.arestech.com.tw

BPC-5080

Arestech

→ **Dimensions**



→ **Specifications**

	Model	BPC-5080-1A1	BPC-5080-2A1
Processor System	CPU	Socket LGA 1151 for Intel®Core™ i7/i5/i3/Celeron (Coffeelake-S)	
	System Chipset	Intel® Q370	Intel® H310
	BIOS	UEFI	
Memory	Technology	Dual-channel DDR4 2400/2666 MHz SDRAM	
	Max. Capacity	32 GB	
	Socket	2, 260-pin SO-DIMM	
Display	Graphics Engine	Intel® UHD Graphics 630	
	VGA	-	1, VGA, Up to 1920 x 1200 @ 60Hz
	DVI-D	-	
	HDMI	-	
	Display Port	3, DP 2.0a, Up to 4096 x 2304 @ 60 Hz	2, DP 2.0a, Up to 4096 x 2304 @ 60 Hz
	Multi Display	Triple Display	Dual Display
Front I/O Interface	USB	4, 4 USB 2.0	
	Serial	2, COM ports (2 RS-232/422/485)	2, COM ports (2 RS-232/422/485)
	GPIO	1, 8-pin Digital I/O (DB-15 connector, Option)	
	Ethernet	-	
	Audio	-	
	Others	-	
Rear I/O Interface	USB	4, 4 USB 3.1	
	Serial	-	
	GPIO	-	
	Ethernet	Dual GbE, 10/100/1000 Mbps (Intel i219V, i211AT)	
	Audio	Line out, Mic In, Realtek LC887 High Definition Audio (HD)	
	Others	-	
Expansion	miniPCIe/ M.2 Slot	1 miniPCIe full-size / 1 M.2 E Key 2230	
	PCI/ PCIe Slot	N/A	
Storage	HDD/SSD	2 SATA III (6.0 Gb/s), (7 mm 2.5" HDD only)	1 SATA III (6.0 Gb/s), (7 mm 2.5" HDD only)
	RAID	RAID 0/1	
	mSATA/M.2	1 M.2 M Key 2242/2260/2280	1 M.2 M Key 2242/2260/2280
Power	Power On Model	AT/ ATX	
	Power Supply Voltage	12/19~28 V DC input (Phoenix Connector)	
	Power Consumption (Typical)	0.65A @ 24 V (15.7W)	0.65A @ 24 V (15.7W)
	Power Consumption (Max.)	4.58A @ 24 V (110W)	4.58A @ 24 V (110W)
	Battery	CR2032; 3.3V	
Mounting	Type	Wall Mount	
Environment	Operating Temperature	-20~60° C (-4~122° F) (Humidity: 60° C @ 80% RH Non-condensing) w/ Extended Temp. RAM & M.2 SSD	
	Storage Temperature	-20~75 °C and 60 °C @ 95% RH Non-condensing	
	Humidity	5~95% @ 40° C, non-condensing	
	Vibration	1 Grms, IEC 60068-2-64, random, 5~500 Hz, 1 Oct/min., 1 hr/axis, x, y, z 3 axes	
	Shock	20 G, IEC 60068-2-27, half sine, 11 ms duration	
General	Certification	TBD	
	Thermal Dissipation	Fanless System	
	Ingress Protection	IP40 Protection	
	Dimensions (W x H x D)	238 x 61 x 245 mm (9.37" x 2.40" x 9.64")	
	Net Weight	3.215kg(7.09lb)	
	Operating System	Windows 10 IoT 64Bit, Linux kernel 4.0.x or above	

Tel: +886-2-8287-9168 Fax: +886-2-8287-2577 Email: service@arestech.com.tw

Assured Systems

Assured Systems is a leading technology company with over 1,500 regular clients in 80 countries, deploying over 85,000 systems to a diverse customer base in 12 years of business. We offer high-quality and innovative rugged computing, display, networking and data collection solutions to the embedded, industrial, and digital-out-of-home market sectors.

US

sales@assured-systems.com

Sales: +1 347 719 4508
Support: +1 347 719 4508

1309 Coffeen Ave
Ste 1200
Sheridan
WY 82801
USA

EMEA

sales@assured-systems.com

Sales: +44 (0)1785 879 050
Support: +44 (0)1785 879 050

Unit A5 Douglas Park
Stone Business Park
Stone
ST15 0YJ
United Kingdom

VAT Number: 120 9546 28
Business Registration Number: 07699660