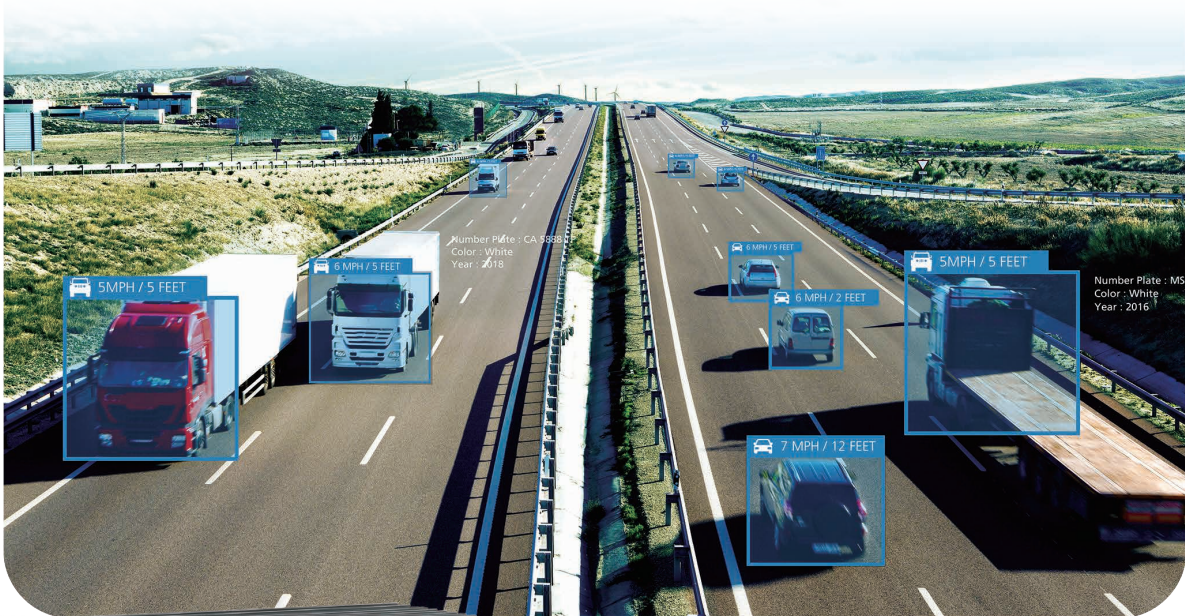


**EAC**

**2000/2100**



NVIDIA® Jetson Xavier™ NX Edge AI Computing System



▲ Traffic Vision



- Small form factor NVIDIA® Jetson Xavier™ NX supports up to 21 TOPS AI performance
- Advanced NVIDIA Volta™ architecture with 384 NVIDIA® CUDA® cores and 48 Tensor cores
- Fanless -20°C to 70°C operation
- 4 GigE LAN with 2 PoE+, 4 USB 3.1, 1 Digital Display
- Supports 4 GMSL2 automotive cameras with Fakra-Z
- M.2 for 5G/4G/LTE/WiFi/BT/GPRS/UMTS
- Storage : M.2 PCIe NVMe SSD, External Micro SD
- DC 9V to 50V wide range power input
- Support 24/7 secure remote monitoring, control, and OTA deployment empowered by Allxon



▼ Public Safety



▲ Auto Optical Inspection



**Vecow**

## Specifications

### System

|                  |   |
|------------------|---|
| CPU              | 6-core NVIDIA Carmel ARM <sup>®</sup> v8.2 64-bit CPU |
| GPU              | 384-core NVIDIA Volta™ GPU with 48 Tensor Cores       |
| DL Accelerator   | 2x NVDLA Engines                                      |
| Memory           | 1 LPDDR4x DRAM, 8GB                                   |
| Software Support | - Linux<br>- NVIDIA JetPack SDK                       |

### I/O Interface

|                    |   |
|--------------------|---|
| USB                | 4 USB 3.1 Type A  |
| Serial             | 2 COM RS-232/485  |
| CAN Bus (EAC-2100) | 1 CAN Bus 2.0 A/B   |
| Micro USB          | - 1 Micro USB console debug port<br>- 1 Micro USB OS flash port |
| Button             | - 1 User-Define Button<br>- 1 Force Recovery Button             |
| LED                | 2 PoE, 2 User Programming                                       |
| SIM                | 1 Nano SIM Card Socket  |
| Antenna            | 6 Antenna for 5G/WiFi/4G/LTE/GPRS/UMTS                          |

### Expansion

|     |  |
|-----|--|
| M.2 | - 1 M.2 Key B Socket (3042/3052, PCIe/USB3)<br>- 1 M.2 Key E Socket (2230, PCIe/USB) |
|-----|--|

### Graphics

|              |   |
|--------------|---|
| Interface    | 1 Digital Display, up to 3840 x 2160 @60Hz  |
| Video Encode | - HEVC : Up to 2x2160p @60, 4x2160p @30, 10x1080p @60, 22x1080p @30<br>- H.264 : Up to 2x2160p @60, 4x2160p @30, 10x1080p @60, 20x1080p @30               |
| Video Decode | - HEVC : Up to 2x4320p @30, 6x2160p @60, 12x2160p @30, 22x1080p @60, 44x1080p @30<br>- H.264 : Up to 2x2160p @60, 6x2160p @30, 10x1080p @60, 22x1080p @30 |

### Camera (EAC-2100)

|      |  |
|------|--|
| GMSL | 4 Fakra-Z connectors for GMSL 1/2 automotive cameras |
|------|--|

### Storage

|      |                                    |
|------|------------------------------------|
| M.2  | 1 M.2 Key M Socket (2280, PCIe x1) |
| eMMC | 1 eMMC 5.1, 16GB                   |
| SD   | 1 Micro SD (External)              |

### Ethernet

|       |  |
|-------|--|
| LAN 1 | 10/100/1000 Base-T Ethernet GigE LAN, RJ45 Connector |
| LAN 2 | 10/100/1000 Base-T Ethernet GigE LAN, RJ45 Connector |

### PoE

|       |  |
|-------|--|
| LAN 3 | IEEE 802.3at (25.5W/48V) GigE PoE+ LAN, RJ45 Connector |
| LAN 4 | IEEE 802.3at (25.5W/48V) GigE PoE+ LAN, RJ45 Connector |

### Power

|                 |   |
|-----------------|---|
| Power Input     | DC 9V to 50V                                |
| Power Interface | 3-pin Terminal Block : V+, V-, Frame Ground |

### Mechanical

|            |  |
|------------|--|
| Dimensions | <b>EAC-2000</b> : 150.4mm x 106.2mm x 50.0mm (5.92" x 4.18" x 1.97")<br><b>EAC-2100</b> : 150.4mm x 106.2mm x 62.0mm (5.92" x 4.18" x 2.44") |
| Weight     | <b>EAC-2000</b> : 1.2 kg (2.6 lb)<br><b>EAC-2100</b> : 1.3 kg (2.9 lb)   |
| Mounting   | - Wallmount by mounting bracket<br>- DIN Rail Mount (Optional)   |

### Environment

|                   |   |
|-------------------|---|
| Operating Temp.   | <b>EAC-2000</b> :   |
|                   | 15W TDP : -20°C to 65°C (-4°F to 149°F)<br>10W TDP : -20°C to 70°C (-4°F to 158°F)              |
| Storage Temp.     | <b>EAC-2100</b> :   |
|                   | 15W TDP : -20°C to 60°C (-4°F to 140°F)<br>10W TDP : -20°C to 65°C (-4°F to 149°F)              |
| Humidity          | -40°C to 85°C (-40°F to 185°F)  |
| Relative Humidity | 5% to 95% Humidity, non-condensing  |
| Shock             | 95% @70°C   |
| Vibration         | Operating, MIL-STD-810G, Method 516.7, Procedure I  |
| EMC               | Operating, MIL-STD-810G, Method 514.7, Procedure I, Category 4<br>CE, FCC, EN50155, EN50121-3-2 |

\* All product information may subject to change without prior notice.  
\* The rights of all brand names, product names and trademarks belong to their respective owners.  
Copyright © 2023 Vecow Co., Ltd. All rights reserved.

## Order Information

| Model Name | Platform         | LAN | PoE+ | USB 3.1 | M.2 | Serial | SIM | GMSL | CAN |
|------------|------------------|-----|------|---------|-----|--------|-----|------|-----|
| EAC-2000   | Jetson Xavier NX | 4   | 2    | 4       | 3   | 2      | 1   | -    | -   |
| EAC-2100   |                  |     |      |         |     |        |     | 4    | 1   |

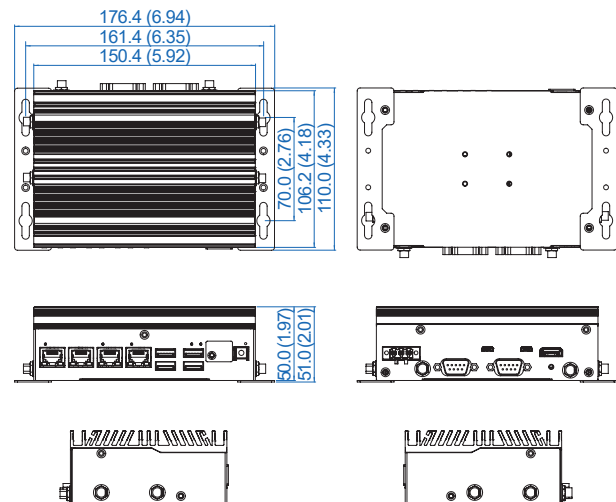
### Accessories

|                    |   |
|--------------------|---|
| PWA-120W1          | 120W, 24V, 90V AC to 264V AC Power Adapter with 3-pin Terminal Block                                  |
| PWA-160W-WT        | 160W, 24V, 85V AC to 264V AC Power Adapter with 3-pin Terminal Block, Wide Temperature -30°C to +70°C |
| DIN-RAIL           | DIN Rail Kit  |
| GMSL Camera Kit    | GMSL Camera with Fakra-Z connector  |
| M.2 Storage Module | M.2 Key M/Key B PCIe Storage Module   |
| 5G Module          | 5G Module with Antenna  |
| 4G Module          | 4G/GPS Module with Antenna  |
| WiFi & Bluetooth   | WiFi & Bluetooth Module with Antenna  |

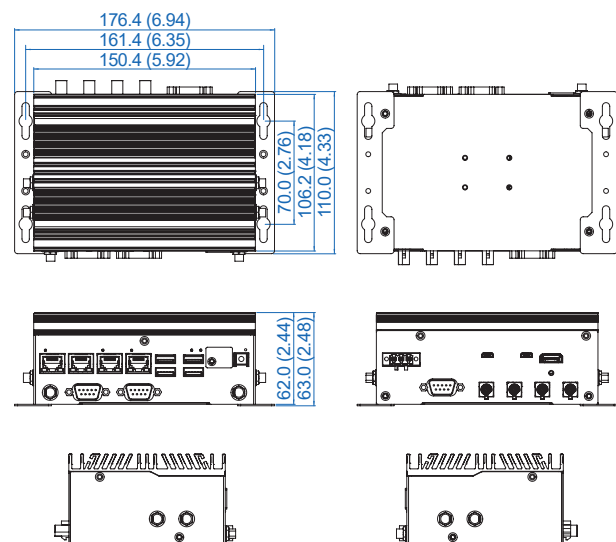
## Dimensions & Drawing

Unit : mm (inch)

### EAC-2000



### EAC-2100



## Assured Systems

Assured Systems is a leading technology company with over 1,500 regular clients in 80 countries, deploying over 85,000 systems to a diverse customer base in 12 years of business. We offer high-quality and innovative rugged computing, display, networking and data collection solutions to the embedded, industrial, and digital-out-of-home market sectors.

### US

[sales@assured-systems.com](mailto:sales@assured-systems.com)

Sales: +1 347 719 4508

Support: +1 347 719 4508

1309 Coffeen Ave  
Ste 1200  
Sheridan  
WY 82801  
USA

### EMEA

[sales@assured-systems.com](mailto:sales@assured-systems.com)

Sales: +44 (0)1785 879 050

Support: +44 (0)1785 879 050

Unit A5 Douglas Park  
Stone Business Park  
Stone  
ST15 0YJ  
United Kingdom

VAT Number: 120 9546 28

Business Registration Number: 07699660