



Industrial Solutions Partner!

DLO5507-L

55" TFT LCD, LED Backlight 1400nits, Ultra Narrow Bezel, FHD(1920x1080)

The DLO5507-L feature a full HD 55-inch LCD with high brightness LED backlight and ultra narrow bezel. DLO5507-L integrate proprietary Durapixel and MaxRGB display technologies, it can reach up to 1400 nits and show sunlight readable image quality, high color saturation, high contrast levels and incredible picture detail. DLO5507-L build in auto color calibration function for excellent color quality and uniformity among multiple displays. With an ultra slim 3.8mm active-to-active width, multiple screen can be placed side by side to create seamless image.

Key Features

- Ultra Brightness:1400nits
- LED Backlight
- Ultra Narrow Bezel 3.8mm
- LCD Blacking Defect Free (H Tni 110°C)
- Resolution FHD (1920x1080)
- High Color Saturation
- Auto Color Calibration

Application:

- TV Wall
- Digital Signage



Specifications

V1

Model No.	DLO5507-L
Description	55" TFT LCD, LED Backlight 1400nits, Ultra Narrow Bezel, FHD(1920x1080)
Display Area (mm)	1209.6(H) x 680.4(V)
Brightness	1400 cd/m ²
Resolution	1920x1080 (FHD)
Contrast Ratio	1300:1
Pixel Pitch (mm)	0.630 (H) x 0.630(W)
Pixel Pre Inch (PPI)	40
Viewing Angle	178°(H), 178°(V)
Color Saturation (NTSC)	78%
Display Colors	10.6B
Response Time (Typical)	12ms
Operating Temperature	0°C ~ 50°C
Storage Temperature	-20°C ~ 60°C
Power Consumption	373W
Dimensions (mm)	1213.5 x 684.3 x 109.15
Weight (Net)	35kg
LED Driving Board	LID55B
Control Board (Optional)	AD5827GDHA
<input type="checkbox"/> AD5827GDHA	VGA + DVI + HDMI + Audio
F / R Control Button	<input type="checkbox"/> 4 Key
<input type="checkbox"/> 4 Key	Power Switch, Menu, Select (+,-),
OSD Menu	Brightness, Contrast, H/V Position, Color, Phase, Clock...
Optional	<input type="checkbox"/> AOT <input type="checkbox"/> Touch Screen

Specifications are subject to change without notice.

All brands or product names are trademarks or registered trademarks of their respective companies.

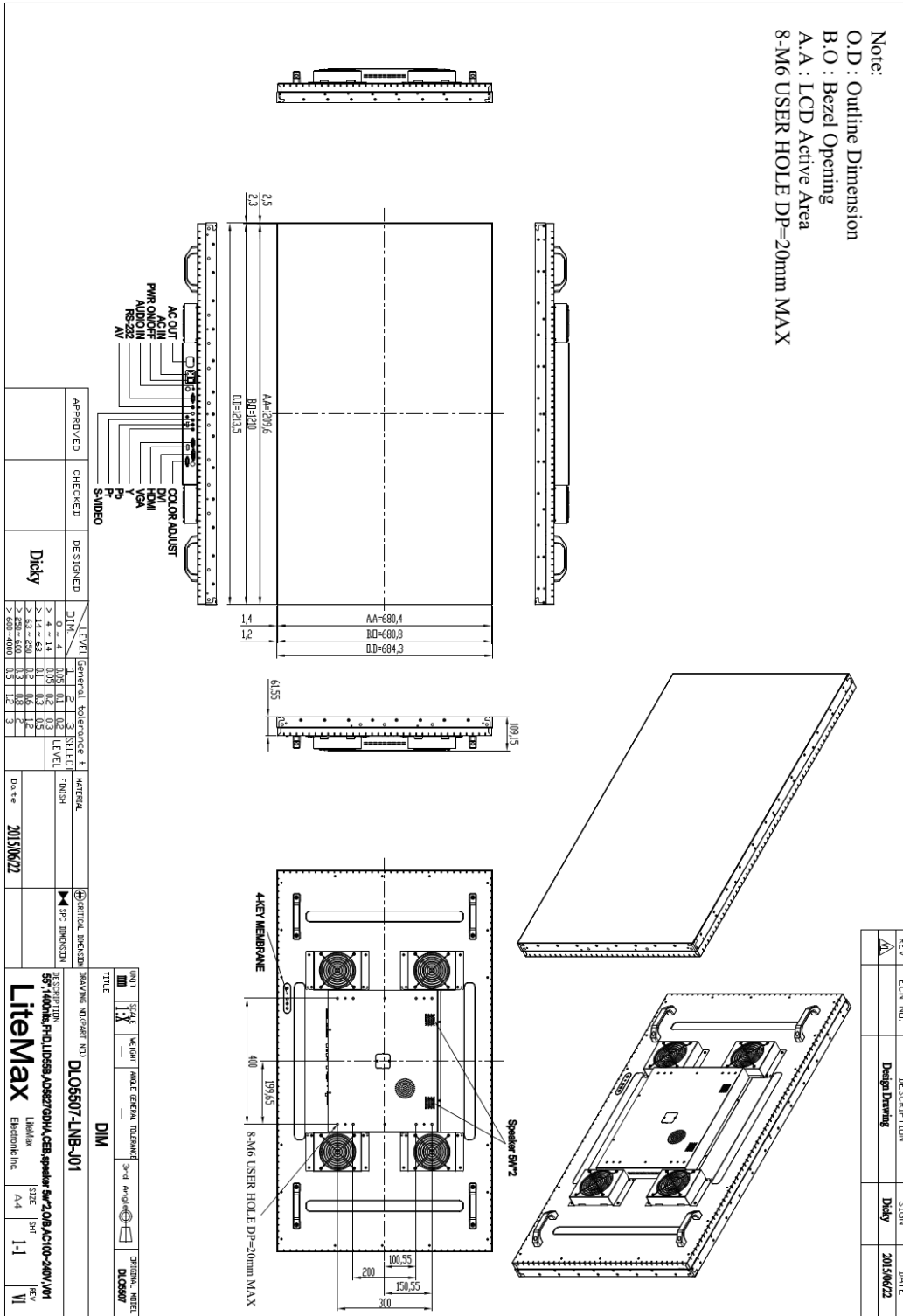
DLO = Panel + LED Driving Board + Control Board + Housing



Mechanical Drawing

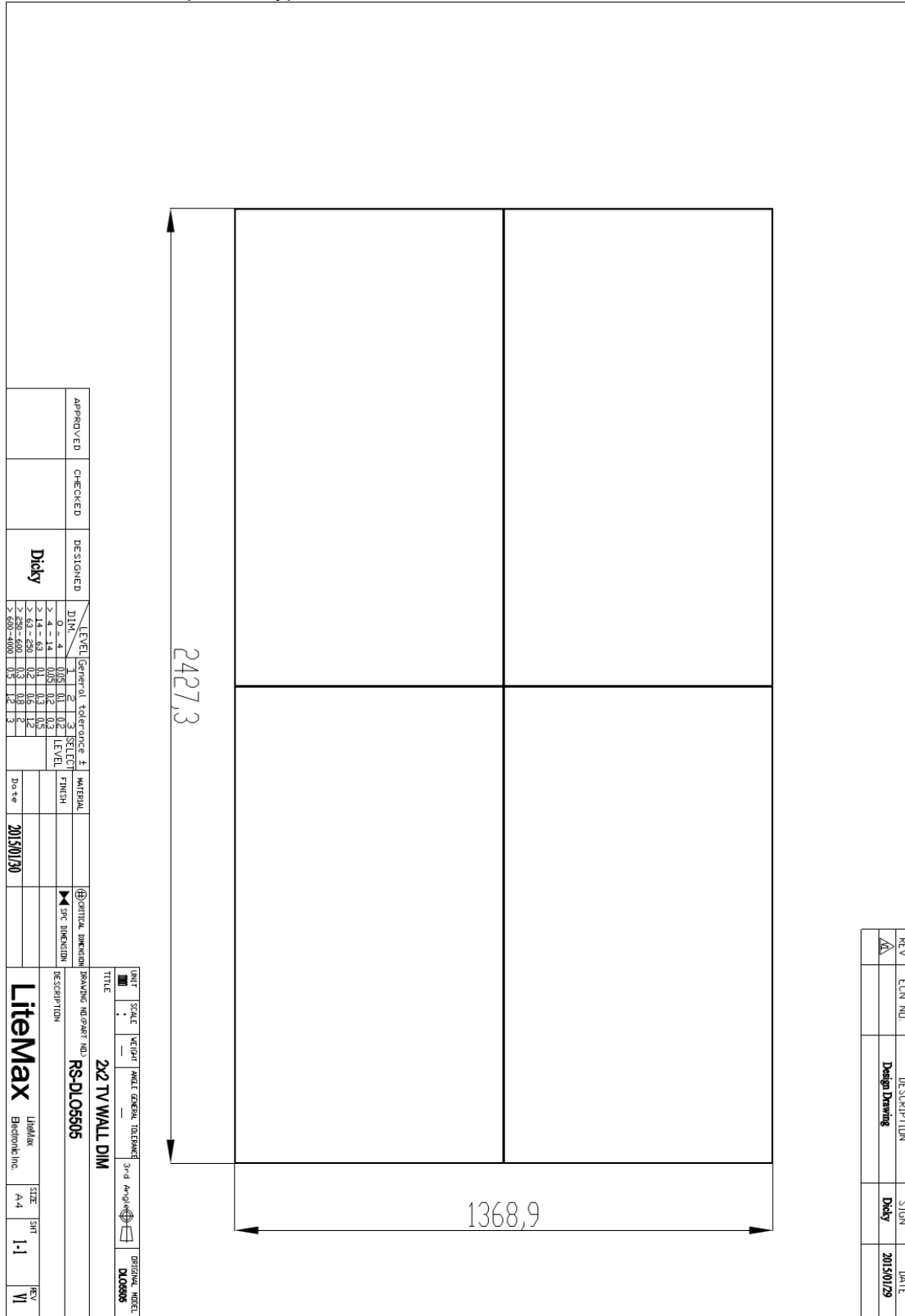
Outline Dimensions

Unit:mm





Outline Dimensions (2x2 set up)





Industrial Solutions Partner!

Ordering Information

Part Number	Description
DLO5507-LNB-J01	55",1400nits,FHD,LID55B,AD5827GDHA,CEB,speaker 5w*2,O/B,AC100~240V,V01

Optional Accessories

Part Number	Description
810618301010	CABLE.POWER.AC.1830mm USA type
810618301090	CABLE,POWER,AC,1830mm Europe type
810618301050	CABLE.POWER.AC.1830mm UK type
810618301170	CABLE.POWER,AC,1830mm Australia type
810618301031	CABLE.POWER.AC.1830mm Japan type

Assured Systems

Assured Systems is a leading technology company with over 1,500 regular clients in 80 countries, deploying over 85,000 systems to a diverse customer base in 12 years of business. We offer high-quality and innovative rugged computing, display, networking and data collection solutions to the embedded, industrial, and digital-out-of-home market sectors.

US

sales@assured-systems.com

Sales: +1 347 719 4508
Support: +1 347 719 4508

1309 Coffeen Ave
Ste 1200
Sheridan
WY 82801
USA

EMEA

sales@assured-systems.com

Sales: +44 (0)1785 879 050
Support: +44 (0)1785 879 050

Unit A5 Douglas Park
Stone Business Park
Stone
ST15 0YJ
United Kingdom

VAT Number: 120 9546 28
Business Registration Number: 07699660