

# ASB-M7102

Mini-ITX

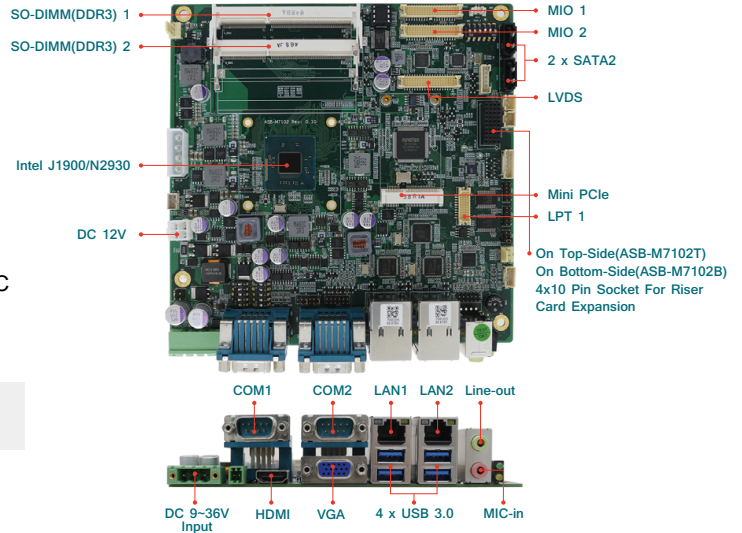
Mini-ITX, Onboard Intel Celeron J1900 (2GHz)/N2930(1.83GHz) Processor, 2 x DDR3 SO-DIMM, LVDS/VGA/HDMI

## Features

- Intel Celeron J1900(2.0GHz) / N2930(1.83GHz) Processor
- 2 x 204-Pin SO-DIMM up to 8GB DDR3 1333MHz
- 1 x 18/24-bit Single/Dual Channel LVDS
- ADotec Designed 40-Pin Socket PCIe Expansion Interface
- Wide Operating Temperature Support with -20°C~70°C
- Wide Range DC 9~36V and Single DC 12V Input

## Packing List

- 1 x ASB-M7102 Industrial Motherboard
- 1 x CR2477 Battery



## Specifications

### System

<b>Form Factor</b>	Mini-ITX
<b>Processor</b>	Onboard Intel Celeron J1900 Processor (2M Cache, 2.00 GHz) Onboard Intel Celeron N2930 Processor (2M Cache, 1.83 GHz)
<b>System Chipset</b>	SoC
<b>System Memory</b>	Support 2 x 204-Pin SO-DIMM up to 8GB DDR3 1333MHz
<b>BIOS</b>	AMI/UEFI BIOS

### Display

<b>Controller</b>	Intel HD Graphics 688/854 MHz (J1900) Intel HD Graphics 313/854 MHz (N2930)
<b>VGA Interface</b>	1 x VGA, 1 x CRT 2 x 6-Pin header
<b>TTL/LVDS Interface</b>	1 x 18/24-bit Single/Dual Channel LVDS Select by DIP-SWITCH (ASB-M7012T Only)
<b>HDMI Interface</b>	1 x HDMI
<b>Resolution</b>	Up to 1920 x 1200 for VGA Up to 1920 x 1200 for HDMI Up to 1920 x 1200 for 24-bit single/dual channel LVDS

### Mechanical & Environment

<b>Board Size (L x M)</b>	170 mm x 170 mm
<b>Gross Weight</b>	0.5 kg
<b>Operating Temperature</b>	-20°C~70°C (-4°F~158°F)
<b>Storage Temperature</b>	-40°C~85°C (-40°F~185°F)
<b>Humidity</b>	10%~90%, non-condensing, operating
<b>Certificate</b>	Meet RoHS 2.0/CE/FCC Class A

### Expansion

<b>Expansion</b>	4 x 10-Pin Socket For Apex Riser Card Expansion 1 x mini PCIe slot
------------------	---

### Power Management

<b>Power Input</b>	Wide range DC 9~36V input / DC 12V input (option)
<b>Power Connector</b>	1 x 3-Pin power input connector / 2 x 2-Pin connector

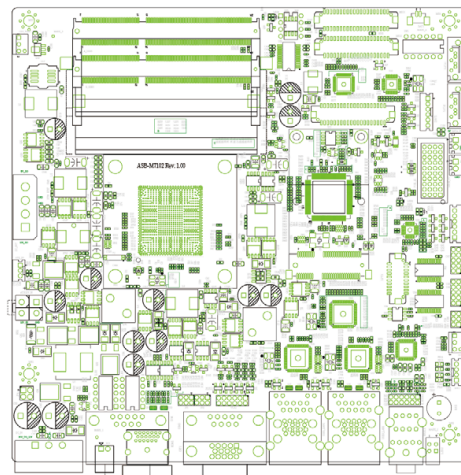
### Ordering Information

<b>ASB-M7102T</b>	Mini-ITX, Intel Celeron J1900/N2930, 2 x SO-DIMM DDR3, VGA/HDMI/LVDS, 4 x 10-Pin Expansion Socket (On Top-Side)
<b>ASB-M7102B</b>	Mini-ITX, Intel Celeron J1900/N2930, 2 x SO-DIMM DDR3, VGA/HDMI, 4 x 10 Expansion Socket (On Bottom-Side)

### I/O

<b>Super I/O</b>	Fintek F81216AD
<b>Ethernet</b>	2 x GbE LAN ports by RJ-45 with Intel 82574L Controller
<b>USB</b>	4 x USB 2.0 external stack ports 1 x USB 2.0 Pin header via MIO2 3 x USB 2.0 Pin header via MIO1 1 x USB 2.0 internal for mini PCIe
<b>Serial</b>	1 x RS-232/RS-422/RS-485 (COM1), DB-9 Connector on I/O, Pin 9 with 5V/12V Ring select 1 x RS-232 (COM2), DB-9 Connector on I/O, Pin 9 with 5V/12V Ring Select 1 x RS-422/485 (COM3) header via MIO1 1 x RS-232/RS-422/RS-485 (COM4) header via MIO1 2 x RS-232 (COM5, COM6) internal header via MIO1
<b>GPIO</b>	8-bit digital I/O by header (4 x DI, 4 x DO ) via MIO2
<b>Storage</b>	2 x SATA2 connectors
<b>Audio</b>	Support Audio via Realtek ALC269-X HD audio codec 2 x Stack Audio Jack, Line-out/ Mic-in 2 x 2W speaker out via 1 x 4-Pin header Line-in, Line-out, MIC by 2 x 6-Pin header
<b>Keyboard /Mouse</b>	2 x PS/2 via MIO2
<b>CMOS Battery</b>	1 x 2-Pin header support CR2477 (1000mAH)
<b>LPT</b>	LPT support by pin header

### Dimension



Industrial Motherboard

Embedded Single Board

Core Module and Baseboard

Accessory

## Assured Systems

Assured Systems is a leading technology company with over 1,500 regular clients in 80 countries, deploying over 85,000 systems to a diverse customer base in 12 years of business. We offer high-quality and innovative rugged computing, display, networking and data collection solutions to the embedded, industrial, and digital-out-of-home market sectors.

### US

[sales@assured-systems.com](mailto:sales@assured-systems.com)

Sales: +1 347 719 4508  
Support: +1 347 719 4508

1309 Coffeen Ave  
Ste 1200  
Sheridan  
WY 82801  
USA

### EMEA

[sales@assured-systems.com](mailto:sales@assured-systems.com)

Sales: +44 (0)1785 879 050  
Support: +44 (0)1785 879 050

Unit A5 Douglas Park  
Stone Business Park  
Stone  
ST15 0YJ  
United Kingdom

VAT Number: 120 9546 28  
Business Registration Number: 07699660