



NPD2706 27" FHD IP65 Sunlight Readable Multi-Touch Marine Display

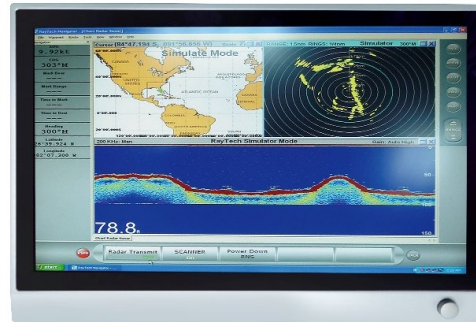
NAVPIXEL NPD2706, the high-performance, rugged touch monitor, is specially engineered to survive from the most demanding working environment. Housed in a milled billet aluminum case, the slim-profile NAVPIXEL NPD2706 is light weight and watertight. The front-mounted sunlight readable touch screen makes the industrial rugged monitor vividly and user-friendly. In addition, the high power efficiency and low heat design guarantee the stability and longevity required for mission critical deployment.

Features:

- 1200 nits Sunlight Readable LCD
- Long Life, Low Power Consumption LED Backlight
- Rotary and push knob (OSD MENU)
- Wide Operating Temperature
- Advanced Optical Bonding (AOT)
- High Shock & Vibration Resistance
- Projected Capacitive Multi-Touch Support
- Full Flat Design
- IP65 Facial Waterproof
- Isolation Power 9-36V DC Input

Application:

- Marine



Specifications

V1

Model Number	NPD2706
Description	27" FHD IP65 Sunlight Readable Multi-Touch Marine Display
Backlight	LED Backlight
Active Display Area	597.6 x 336.15
Brightness	1200 cd/m2
Resolution	1920x1080
Aspect ratio	16 : 9
Contrast Ratio	3600 : 1
Pixel Pitch (mm)	0.311(H) x 0.311(V)
Pixel per inch (PPI)	81
Viewing Angle	178°(H),178°(V)
Display Color	16.7M
Response Time	12ms
Inputs	VGAX1, DVI-Dx1, HDM1x1, DPx1, Compositex1, RS232x1, USBx1
Mechanical	
IP Rating	Facial waterproof to IP65 standards when console mounted.
Construction	Rugged SPCC Chassis
Mounting	Panel (Flush) mount, VESA mount
Dimension (mm)	660(W)x445(H)x67(D)
Net Weight	12.5Kg
Power	
Voltage	DC Input Voltage: DC 9~36V
Power Consumption	62W
Environmental	
Operating Temperature	-10°C~50°C
Non-Operating Temperature	-20°C~70°C
Certification	Designed to meet CE / FCC Class A
Marine Type Approval	

*Specifications are subject to change without notice.
All brands or product names are trademarks or registered trademarks of their respective companies.*



Mechanical Drawing

Outline Dimensions

Unit:mm

NOTE:
O.D : OUTLINE DIMENSION
B.O : BEZEL OPENING
A.A : LCD ACTIVE AREA

LEVEL	General	tolerance	LEVEL	LEVEL
0 - 4	0.05	0.1	1	0.2
> 4 - 14	0.05	0.2	2	0.3
> 14 - 50	0.1	0.3	3	0.4
> 50 - 600	0.2	0.5	4	0.5
> 600 - 4000	0.5	1.2	5	1.0

REV	ECN NO.	DESCRIPTION	SIGN	DATE

APPROVED	CHECKED	DESIGNED	DWG. NO.	DATE

LEVEL	GENERAL	TOLERANCE	LEVEL	LEVEL
0 - 4	0.05	0.1	1	0.2
> 4 - 14	0.05	0.2	2	0.3
> 14 - 50	0.1	0.3	3	0.4
> 50 - 600	0.2	0.5	4	0.5
> 600 - 4000	0.5	1.2	5	1.0

UNIT	SCALE	WEIGHT	ANGLE	GENERAL	TOLERANCE	3rd angle	PROJECTION
MM							1st angle

TITLE	DIM
NPD2706-ATA-P01	NPD2706

DESCRIPTION	REV
Litemax	1-2

BRANDING NUMBER	DATE
NPD2706-ATA-P01	2020/8/3

DESCRIPTION	REV
Litemax	1-2

DESCRIPTION	REV
Litemax	1-2



APPROVED	CHECKED	DESIGNED
		Eric Lin

LEVEL	General	Tolerance	±
> 4 - 14	0.05	0.1	0.2
> 14 - 63	0.1	0.2	0.5
> 63 - 250	0.2	0.5	1.0
> 250 - 500	0.5	1.0	2.0

DATE	SCALE	WEIGHT	MARKET	GENERAL	TELEPHONE	3-D	APP'D	ORIGINATOR	DATE

REV	EDN. NO.	DESCRIPTION	SIGN	DATE

DATE	SCALE	WEIGHT	MARKET	GENERAL	TELEPHONE	3-D	APP'D	ORIGINATOR	DATE

Dimension

DATE: 27/12/2019, 10:26 AM, 1080 PCT, 148 BT, 90% ALL, D276 AD, E220, GP, R, C, H, V, R, A, Q, T, V, 1

DESCRIPTION: **NPD2706-ATA-P01**

Litemax Electronic Inc. Litemax SLE: SPT: 2-2 REV: V1



Ordering Information

Part Number	Description
NPD2706-ATA-P01	27",1200nits,1920x1080,PCT-usb(T:90%),LID27B,AD8220GDHPVR,O/F,VR,AOT,V1

Optional Accessories

Part Number	Description
112615315401 x (4)	Metal,SPCC,NPS,1531,Lock,V0,P
214032121101 x (4)	Screw,M4,32mm,Round,Ni,P
460100002101 x (4)	Fixture,other,MP-4,V0,P
810618301010 (Optional)	CABLE.POWER.AC.1830mm USA type
810618301090 (Optional)	CABLE.POWER.AC,1830mm Europe type
810618301050 (Optional)	CABLE.POWER.AC.1830mm UK type
810618301170 (Optional)	CABLE.POWER.AC,1830mm Australia type
810618301030 (Optional)	CABLE.POWER.AC.1830mm Japan type

Assured Systems

Assured Systems is a leading technology company with over 1,500 regular clients in 80 countries, deploying over 85,000 systems to a diverse customer base in 12 years of business. We offer high-quality and innovative rugged computing, display, networking and data collection solutions to the embedded, industrial, and digital-out-of-home market sectors.

US

sales@assured-systems.com

Sales: +1 347 719 4508
Support: +1 347 719 4508

1309 Coffeen Ave
Ste 1200
Sheridan
WY 82801
USA

EMEA

sales@assured-systems.com

Sales: +44 (0)1785 879 050
Support: +44 (0)1785 879 050

Unit A5 Douglas Park
Stone Business Park
Stone
ST15 0YJ
United Kingdom

VAT Number: 120 9546 28
Business Registration Number: 07699660