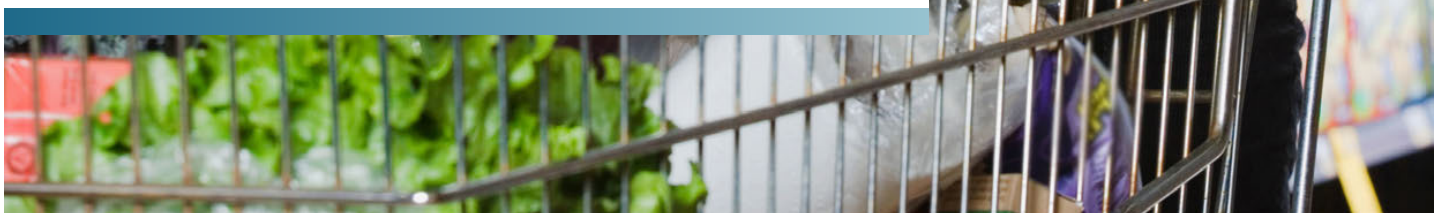




10" POS Professional Monitor



Overview

Commercial Grade

Designed for use in commercial applications this screen can run 24/7. No external buttons or controls to avoid tampering.

Attach External Devices

The screen has a HDMI input for attaching external devices to run the screen.

LED Backlight

Improves brightness and contrast as well as improving their lifespan and reducing their power consumption. Unlike other forms of light this technology is mercury free; making it even more eco-friendly. The panel and backlight have a lifespan in excess of 70,000 hours.

Portrait/Landscape Orientation

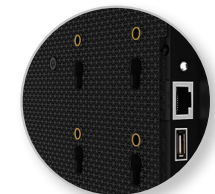
The screen can be used in either a landscape or portrait orientation depending on your requirement.

Integrated Mounting Solution

The rear of the display includes an integrated and secure screw based mounting solution.

RS-232 Control

Control, scale and customise your display over long and short distances using RS-232,





Commercial Monitor

Built with commercial grade panel and components these displays are designed to run 24/7 in constant use, unlike domestic screens. They have a tempered glass frontage and an enclosure made from a light-weight polymer so they are ideal for shelf edge and POS displays. They also have a screwless design to achieve a seamless aesthetic and avoid tampering. The panel also has a lifespan of over 70,000 hours of continuous use. They can either be used in landscape or portrait orientation.



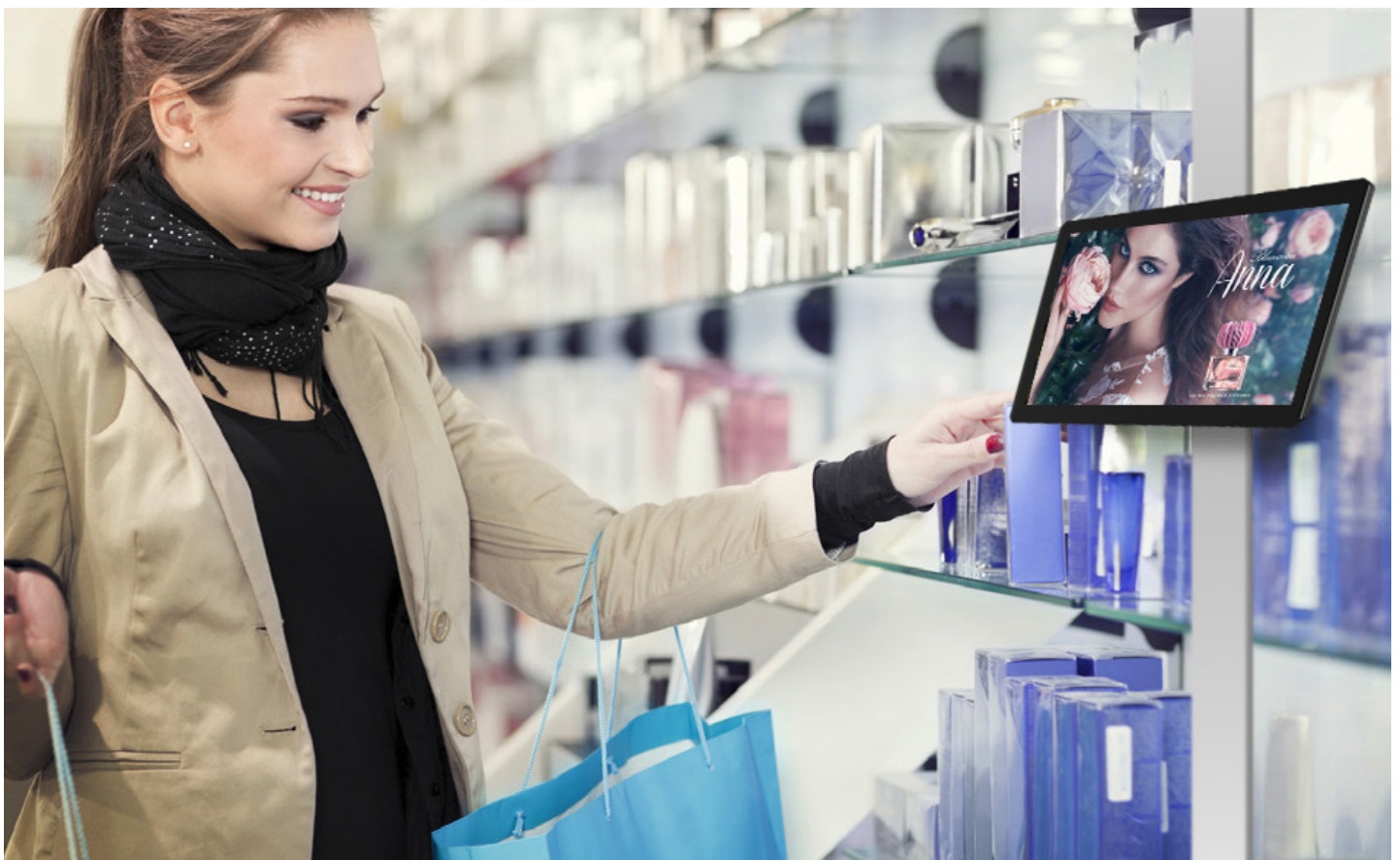
HDMI Input

The monitor has a HDMI input so attaching external devices is easy thanks to its unmatched quality and ease of use. HDMI offers the best high definition audio and video quality on the market. HDMI is able to work with a huge variety of different products such as DVD players, media players, cameras and PCs.

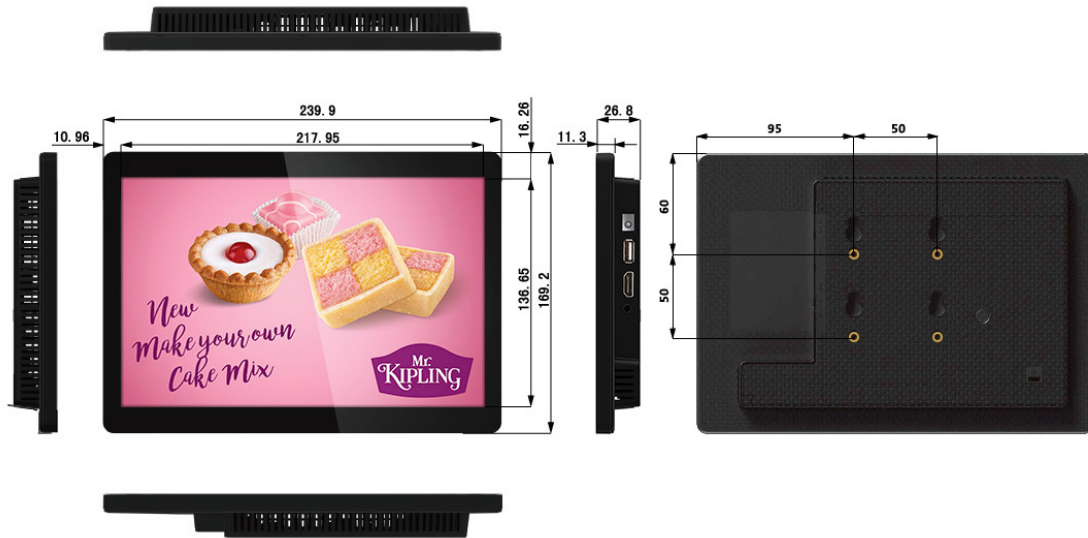


RS-232 Control

Once your screen is connected via RS-232 you can control, scale and customise your display remotely over short and long distances.



Technical Drawing:



Panel	Display Size	10 inch
	Resolution	1280x800
	Display Area (mm)	217.95x136.65
	Aspect Ratio	16:10
	Brightness (cd/m2)	350
	Colour	16.7M
	Colour Depth	10 Bit
	Viewing Angle	178°
	Contrast Ratio	800:1
	Lifespan	50,000 Hours
Audio	Speaker Output	1.5W, 8Ω
Mechanical	Input Voltage	AC110~240V (50Hz~60Hz)
	Unit Size (WxHxD mm)	239.9x169.2x26.8
	Bezel Size (mm)	Top/Bottom:16.26 Left/Right:10.96
Environmental	Operating Temperature	0°C to 50°C
	Storage Temperature	-30°C to 60°C
	Operating Humidity	10% to 80%
	Storage Humidity	5% to 95%

Assured Systems

Assured Systems is a leading technology company with over 1,500 regular clients in 80 countries, deploying over 85,000 systems to a diverse customer base in 12 years of business. We offer high-quality and innovative rugged computing, display, networking and data collection solutions to the embedded, industrial, and digital-out-of-home market sectors.

US

sales@assured-systems.com

Sales: +1 347 719 4508
Support: +1 347 719 4508

1309 Coffeen Ave
Ste 1200
Sheridan
WY 82801
USA

EMEA

sales@assured-systems.com

Sales: +44 (0)1785 879 050
Support: +44 (0)1785 879 050

Unit A5 Douglas Park
Stone Business Park
Stone
ST15 0YJ
United Kingdom

VAT Number: 120 9546 28
Business Registration Number: 07699660