

# ECX700-ADP

Intel Processor i5-1245UE or i7-1265UE  
Ruggedized Fanless Embedded System



## KEY FEATURES



### Ultra Rugged Design

IP67/ IP69K, comply with military criteria of vibration and shock test



### Wide Temperature

Operating temperature: -20° to 70° C



### Wide Voltage

Power range: 9~36V

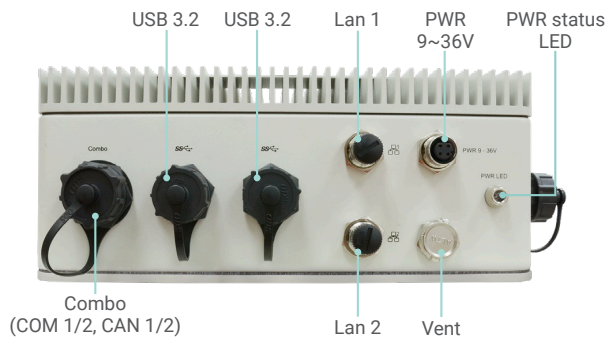


### Wireless

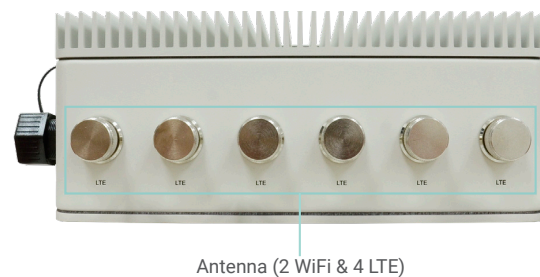
Optional WiFi, LTE



## PANEL



Bottom View



Top View

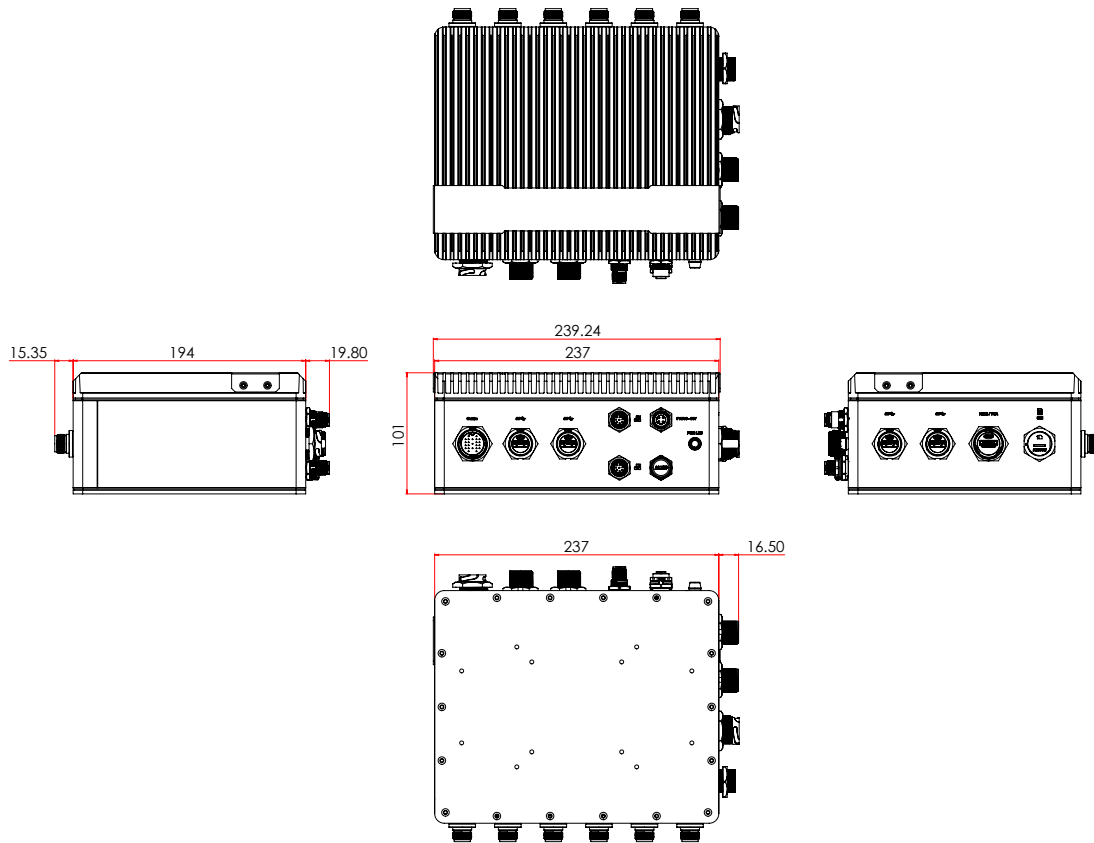


Right View



Left View

**DIMENSIONS**



## SPECIFICATION

SYSTEM	Processor	12th Gen Intel® Core™ Processors, BGA 1744 (Alder Lake-P, 15W) Intel® Core™ i7-1265UE Processor, 10C12T, 12M Cache, 1.7GHz (4.7GHz) Intel® Core™ i5-1245UE Processor, 10C12T, 12M Cache, 1.5GHz (4.4GHz)
	Memory	On board memory supports 8GB.(default)
	BIOS	AMI SPI 256Mbit
GRAPHICS	Controller	Intel® Iris® Xe Graphics eligible
	Feature	OpenGL 4.2, Direct X 11.1, OpenCL 1.2, OGL ES 3.0 HW Decode: H.264, MPEG2, VC1, VP8, H.265, MPEG4, MVC, VP9, WMV9, JPEG/MJPEG HW Encode: H.264, MPEG4, VP8, H.265, MVC
	Display	1 x HDMI   HDMI: resolution up to 3840x2160@30Hz
STORAGE	M.2 SSD (M Key)	256GB Available(128GB/512GB by project support)
EXPANSION	Interface	1 x M.2 3042/3052 B key (PCIe x1 & USB3.0/2.0)(for LTE or 5G module) 1 x M.2 2230 E Key (PCIe x1 & USB2.0)(for Wi-Fi module)
	ETHERNET	Controller
LED	Indicators	1 x Power Status LED
BOTTOM I/O	USB	2 x USB 3.2
	LAN	2 x GbE
	Combo	2 x RS232 and 2 x Can bus protocol
	Vent	1 x Vent
	Power	1 x 9~36V DC-IN
TOP I/O	Antenna Hole	6 x Antenna (2 x WiFi, 4 x LTE)
RIGHT SIDE I/O	Display	1 x HDMI
	SIM slot	1 x SIM card slot
	USB	2 x USB 3.2
WATCHDOG TIMER	Output & Interval	System Reset, Programmable via Software from 1 to 255 Seconds
POWER	Type	DC-in 9~36V
	Connector	M12 D-code
OS SUPPORT	Microsoft	Windows 10 IoT Enterprise 64-bit
	Linux	Linux
MECHANISM	Mounting	Wall mount
	Dimensions (W x H x D)	239.24 x 194 x 101 mm
	Weight	TBD
ENVIRONMENT	Operating Temperature	-20 to 70°C
	Storage Temperature	-40 to 85°C
	Relative Humidity	5 to 95% RH (non-condensing)
STANDARDS AND CERTIFICATIONS	Construction	IP67/ IP69K enclosure
	Shock	Operation shock test: Half Sine Wave 15G, 11ms, 3 Shock Per Axis
	Vibration	Operation Vibration test: MIL-STD-810G 514.6C-2, Figure 514.6C-2
	Certifications	CE, FCC class A, ROHS

### ORDERING INFORMATION

Model Name	Part Number	Processor	Memory down	Storage	USB 3.2	LAN	HDMI	2xCOM+ 2CAN bus	WIFI+BT	LTE	External Cable list		
											IP67 M12 4pin DC cable L=100mm	IP67 COM+ CAN cable L=300mm	M12 Lan cable L=300mm
ECX700-ADP2040A-i5	750-ECX7001-000G	i5-1245UE	8GB	256GB SSD	4	2	1	Y	Y	Y	Y	Y	Y
ECX700-ADP2040A-i7	750-ECX7001-100G	i7-1265UE	8GB	256GB SSD	4	2	1	Y	Y	Y	Y	Y	Y

### OPTIONAL ITEMS

Optional Items	Part Number	Description
External USB cable	A81-001129-068G	IP67 USB Plug to USB Plug, 300mm
External HDMI cable	A81-026004-068G	IP67 HDMI Plug to USB Plug, 300mm

### PACKING LIST

· 1 ECX700-ADP system unit
· 1 COMBO cable (for COM & CANBUS)
· 2 LAN cable
· 2 Wi-Fi antenna
· 2 LTE antenna
· 6 Dust cover (for antenna connector)
· 1 DC input cable

## Assured Systems

Assured Systems is a leading technology company with over 1,500 regular clients in 80 countries, deploying over 85,000 systems to a diverse customer base in 12 years of business. We offer high-quality and innovative rugged computing, display, networking and data collection solutions to the embedded, industrial, and digital-out-of-home market sectors.

### US

[sales@assured-systems.com](mailto:sales@assured-systems.com)

Sales: +1 347 719 4508  
Support: +1 347 719 4508

1309 Coffeen Ave  
Ste 1200  
Sheridan  
WY 82801  
USA

### EMEA

[sales@assured-systems.com](mailto:sales@assured-systems.com)

Sales: +44 (0)1785 879 050  
Support: +44 (0)1785 879 050

Unit A5 Douglas Park  
Stone Business Park  
Stone  
ST15 0YJ  
United Kingdom

VAT Number: 120 9546 28  
Business Registration Number: 07699660