

U.K. ☎ +44 1785 879050 U.S. ☎ +1 347 7194508 www.assured-signage.com

Sureview 43" Hanging Double-Sided Window Display



Maximise window displays by broadcasting content inwards and outwards

Double Sided Window Display

Grab the attention of onlookers with the outward facing, sunlight readable screen. Once your customers are inside the building you can then use the inward facing display to reinforce your message further.



Window Displays (700cd/m²)

Brightness is paramount when using outward facing screens. These displays use two commercial grade high brightness panels (700cd/m²); more than twice the brightness of a standard home TV to allow easy readability in window displays.



Ultra Resistant Blackening Defect (up to 110°C)

LCD panels exposed to direct sunlight suffer from temporary blackening defect. These displays use a special high brightness panel that can withstand surface temperatures up to 110°C with no blackening defect occurring.



Plug and Play

Plug and play is the most straightforward way to upload content to the screen. Simply load images and videos on a USB stick, insert into the display, wait for your content to copy over and then remove. Your images and videos will now play in a continuous loop.



SUREVIEW

Other Features

24/7 Commercial Grade

These displays use a commercial grade LCD panel and LED backlight. They have the ability to be in constant use 24/7 for over 70,000 hours; a true commercial grade solution.



Integrated Android Media Player

There is an integrated Android media player inside the screen allowing you to upgrade to a network version without needing any additional hardware. You can also install third party Android apps if required.



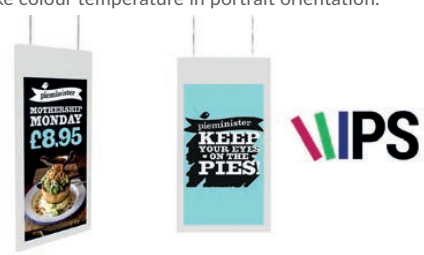
Super Slim Design

Even though these displays feature two separate screens they have a profile thinner than most single-sided displays. They have a remarkable depth of just 21.6mm, allowing for stylish and modern window displays.



Dual 700cd/m² Panels

Both sides feature commercial grade high brightness IPS panels for accurately displaying image quality and colour depth with no fall-off in colour accuracy. These panels are designed to achieve ultimate lifelike colour temperature in portrait orientation.



Wide Viewing Angle

Thanks to the IPS technology these displays provide fantastic image quality with a remarkable viewing angle of 178° in portrait orientation.



Integrated Speakers

The displays feature two integrated slimline speakers for applications that require an audio element.



Integrated Ceiling Mount

The screen comes with an integrated wire hanging mounting solution so no additional ceiling mount is required. You can even hide unsightly power and data cables in the cover tubes provided.



Different Content on Each Side

When using our user-friendly online CMS software, you can really capitalise on the duality of these displays by broadcasting different content on each side. Tailor your messaging to people inside and outside the building for maximum effectiveness.



Key Features



DOUBLE SIDED DISPLAY



24/7 COMMERCIAL GRADE



INTEGRATED ANDROID
MEDIA PLAYER



CEILING MOUNT



IPS PANEL

PLUG AND PLAY

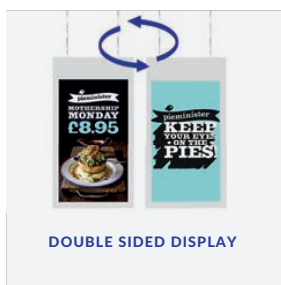


LED BACKLIGHT

OPTIONAL NETWORK UPGRADE



SUNLIGHT READABLE



DOUBLE SIDED DISPLAY



SUPER SLIM DESIGN

21.6mm

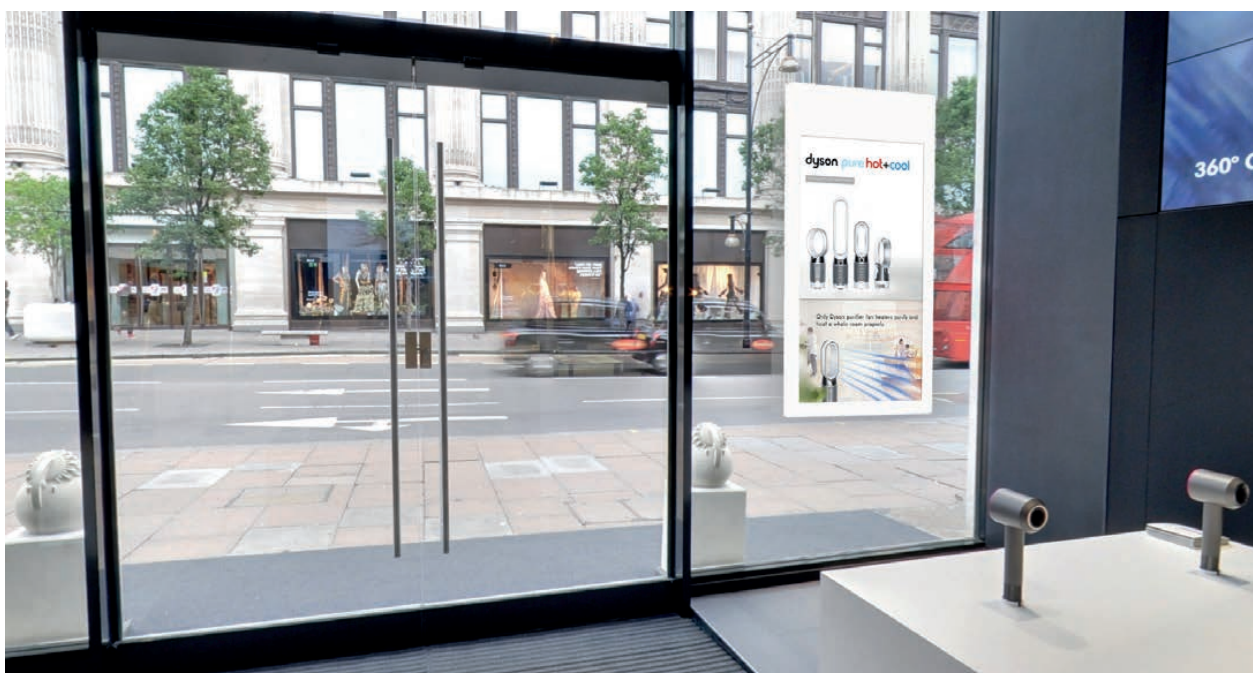


INTEGRATED CEILING
MOUNT

SUREVIEW

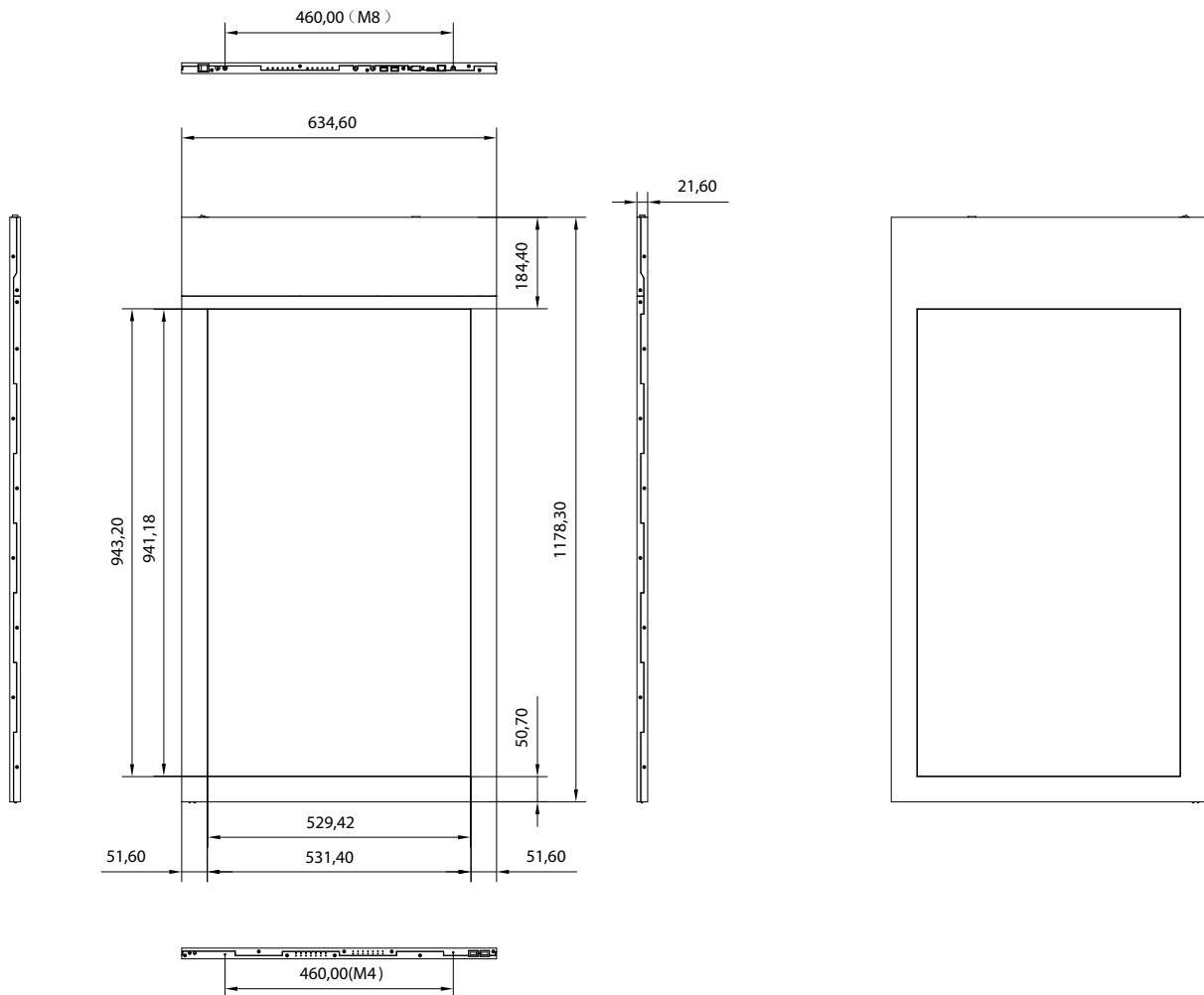
Specification Table

| | | 43 Inch |
|---------------|--|---|
| Panel | Resolution | 1920x1080 |
| | Display Areas (mm) | 943.2x531.4 |
| | Aspect Ratio | 16:9 |
| | Side A Brightness (cd/m ²) | 700 |
| | Side B Brightness (cd/m ²) | 700 |
| | Colour | 16.7M |
| | Viewing Angle | 178° |
| | Contrast Ratio | 1200:1 |
| Audio | Speaker Type | 2W, 8Ω (x2) |
| AV Inputs | Video | HDMI, VGA |
| | Audio | Audio Socket (3.5mm) |
| Power | Power Consumption (W) | 150 |
| | Input Voltage | AC100~230V (50Hz~60Hz) |
| Mechanical | Unit Size (WxHxD mm) | 1178.3x634.6x21.6 |
| | Package Size (WxHxD mm) | 1300x750x160 |
| | Net Weight (kg) | 16.9 |
| | Gross Weight (kg) | 22.5 |
| Environmental | Operating Temperature | 0 °C to 40 °C |
| | Storage Temperature | -20°C to 60°C |
| | Operating Humidity | 0% to 90% |
| | Storage Humidity | 0% to 95% |
| Computer | Media Formats | Video (MPG, AVI, MP4, RM, RMVB, TS), Audio (MP3, WMA), Image (JPG, GIF, BMP, PNG) |
| | Media Resolution | 1920x1080/1080x1920 |
| | CPU | Quad-Core ARM Cortex A17, 1.6GHz |
| | GPU | Quad-Core ARM Mali-T764 |
| | RAM | DDR3 2GB |
| | Internal Storage | 8GB eMMC |
| | USB | 1 x USB (OTG/HOST), 1 x USB (HOST) |
| | LAN | 100M/1000M Ethernet (Network Version Only) |
| | Wi-Fi | 802.11b/g/n/ac (Network Version Only) |
| | OS | Android 7.1 |
| | Graphic Engine | OpenGL ES 1.1/2.0/3.0/3.1, OpenCL 1.1, Renderscript, Direct3D 11.1 |
| Accessories | Included | Installation Kit (includes 2 x 2.4m Wire Ropes), Scheduling Software, Remote Control, User Manual |
| | Optional | Network Upgrade, Touch Screen Version |
| Warranty | Warranty Period | 3 Year Warranty |
| | Technical Support | Lifetime |



SUREVIEW

Technical Drawing



Why Choose Our Commercial Display Solutions?



Lifetime Technical Support

From the moment you receive your product, throughout the duration of your warranty and even after your warranty has expired we are here to support you. If you require any assistance setting up or using your product, or have any problems at all, we can provide free technical support via telephone and email.



On-site Support and Maintenance*

If needed, we can provide an installation service for any of our products. We can also set up service-level agreements for larger projects that require maintenance contracts.



Extended Warranty*

All of our commercial display products come with a 3 year commercial warranty as standard but if you want to extend this you can upgrade this to cover a 5 year period at point of purchase.



Training

As well as providing free remote CMS training sessions and webinars we can also visit you to deliver bespoke training for our software and hardware*.



Advanced Replacements†

Should your display suffer from any kind of hardware failure during the warranty period we will send you an advanced replacement and arrange for your old display to be collected, free of charge. This ensures no downtime where you are without a screen.



Custom Product Testing & Configuration

If you need us to test third party software or a website, or configure your screen in a particular way before it is dispatched (e.g. in a particular orientation or network mode), we can do so to make your life easier.



3D Rendering

Want to know how a particular screen will look once installed? Send us a photo of the location and we will create a 3D rendering of any screen in situ to help you to visualise how amazing it will look.



Logistics Support

We hold more stock in our UK warehouse than any other manufacturer so we can help you meet tight deadlines. For last minute orders we can also offer special express or morning delivery options*. We also carry out UK based quality control checks on every display before it leaves our warehouse.



Project Support

If you need to loan a sample unit to test we'd be more than happy to arrange this. We can also provide a rental service for temporary projects*.



Customisation*

Your display can be customised to suit your requirements by adding your logo or printed graphics or even tailoring the colour of a display. We can also carry out hardware modifications to existing products or manufacture bespoke solutions for special projects.



Extras*

As well as being able to provide accessories and add-ons, such as extra remote controls, NUC PCs and video wall controllers, we can also supply custom made flight cases which are great if a display needs to be moved safely from place to place.

SUREVIEW

†UK mainland only

*These particular services may incur additional charges

Assured Systems

Assured Systems is a leading technology company with over 1,500 regular clients in 80 countries, deploying over 85,000 systems to a diverse customer base in 12 years of business. We offer high-quality and innovative rugged computing, display, networking and data collection solutions to the embedded, industrial, and digital-out-of-home market sectors.

US

sales@assured-systems.com

Sales: +1 347 719 4508

Support: +1 347 719 4508

1309 Coffeen Ave
Ste 1200
Sheridan
WY 82801
USA

EMEA

sales@assured-systems.com

Sales: +44 (0)1785 879 050

Support: +44 (0)1785 879 050

Unit A5 Douglas Park
Stone Business Park
Stone
ST15 0YJ
United Kingdom

VAT Number: 120 9546 28

Business Registration Number: 07699660