



Industrial Solutions Partner!

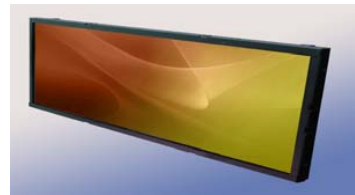
SSD2815

28" Resizing LCD, 1000 nits LED backlight, 1366x256 ultra wide aspect ratio 16:3

SSD2815 is an innovative ultra-wide, sunlight readable, LED backlight LCD display. It provides LCD panel with specific ratios for digital signage, public transportation, exhibition hall, department store, vending machine and industrial applications. Incorporating with A.D. control board and backlight design, it is high brightness and sunlight readable panel, can display high-quality video with energy-efficient.

Key Features

- Resizing LCD
- Ultra Wide Screen (16 : 3)
- Sunlight Readable
- LED Backlight
- High Brightness 1000 nits
- Low Power Consumption
- High Uniformity (90%)
- Wide Dimming
- Life Expectancy (70,000hrs)
- Slim Bezel



Specifications

V1

Model No.	SSD2815
Description	28" Resizing LCD, 1000 nits LED backlight, 1366x256
Display Area	697.68 x 130.7 mm
Brightness	1,000 cd/m ²
Resolution	1366 x 256
Aspect Ratio	16 : 3
Contrast Ratio	2500:1
Pixel Pitch (mm)	0.51075 x 0.51075
Viewing Angle	176°(H), 176°(V)
Display Colors	16.7M
Response Time (Typical)	6.5 ms
Sync	LVDS
Power Consumption	28W
Dimensions (mm)	740.2 x 167.2 x 56
Weight (Net)	7.2kg (1/pc packing), 13.5kg (2/pcs packing)
LED Driving Board	LID28A01
Control Board (Optional)	AD2662GD / AD2662GDVAR
<input type="checkbox"/> AD2662GD	VGA + DVI
<input type="checkbox"/> AD2662GDVAR	VGA + DVI (Optional AV/ S-Video / Component / Audio)
<input type="checkbox"/> Others	
F / R Control Button	5 Key / 4 Key
<input type="checkbox"/> 4 Key	Power Switch, Menu, Select (+,-),
<input type="checkbox"/> 5 Key	Power Switch, Menu, Select (+,-),Auto
OSD Menu	Brightness, Contrast, H/V Position, Color, Phase, Clock...
Optional	<input type="checkbox"/> Touch Screen

Specifications are subject to change without notice.

All brands or product names are trademarks or registered trademarks of their respective companies.

SSD = Panel + LED Driving Board + Control Board

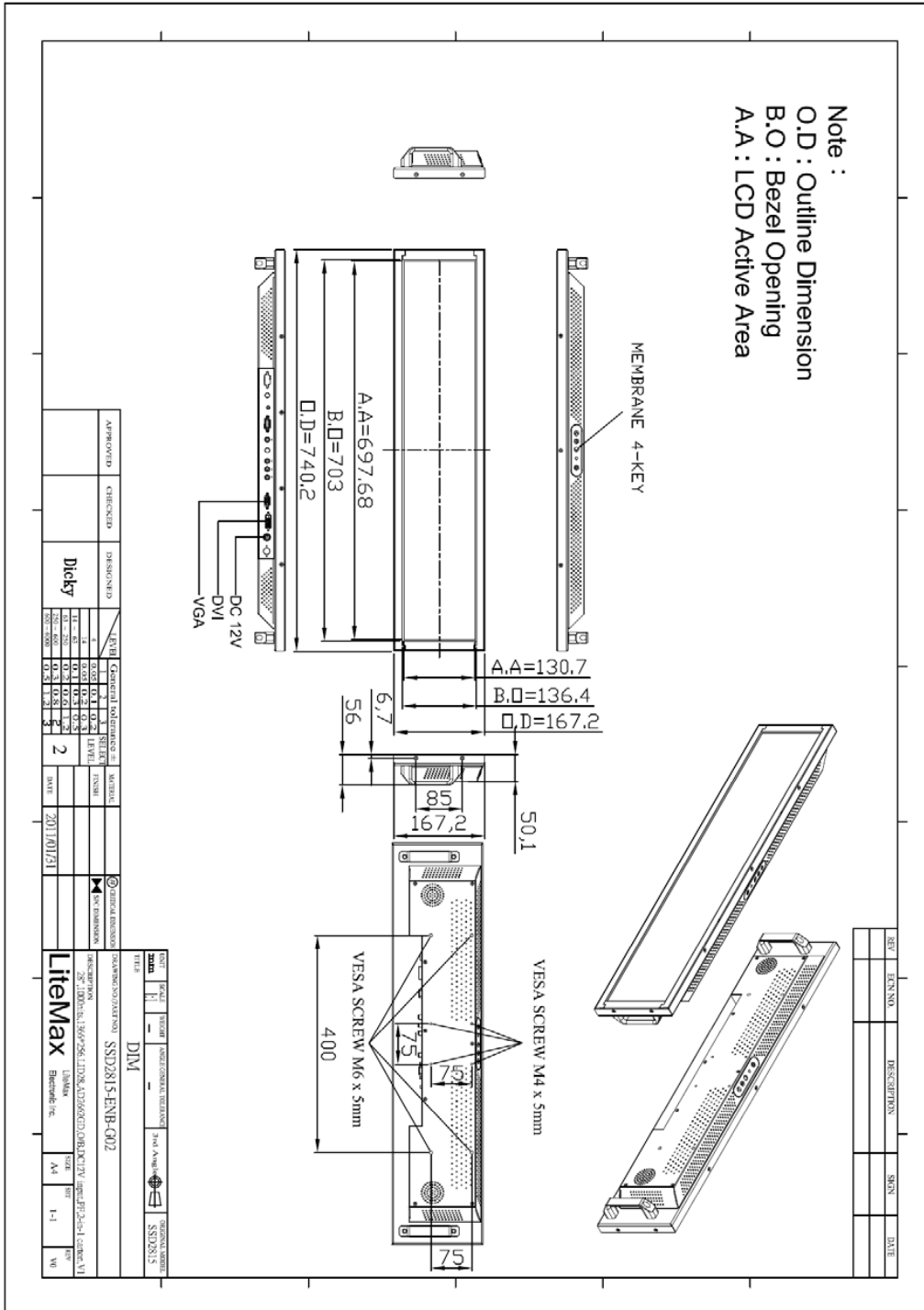


Industrial Solutions Partner!

Mechanical Drawing

Outline Dimensions

Unit: mm





Industrial Solutions Partner!

Ordering Information

Model Name	Description
SSD2815-ENB-G02	28",1000nits,1366*256.LID28,AD2662GD,O/B,DC12V input,PF,2-in-1 carton,V1

Optional Accessories

Part Number	Description
980000460010	SET.OTHER,ADAPTER REWORK.60W PAA060F WITH.POWER DIN 4pin lock,P
810618301010 (Optional)	CABLE.POWER.AC.1830mm.(US Type).3PIN PLUG TO SOCKET.SVT(SPT-2)18AWG 3C BLACK,P.
810618301090 (Optional)	CABLE,POWER,AC,1830mm.(EU Type) 3PIN PLUG TO.SOCKET,H05VV-F 3G.0.75MMSQ BLACK,P
810618301050 (Optional)	CABLE,POWER,AC,1830mm.UK(FUSE) 3PIN PLUG TO.SOCKET,H05VV-F 3C(3G) 0.75MMSQ BLACK,P
810618301170 (Optional)	CABLE.POWER,AC,1830mm. (AU Type) 3PIN PLUG TO 2P SOCKET.LTSA 0.75MMSQ BLACK,P
810618301030 (Optional)	CABLE.POWER.AC.1830mm.(JP Type).2PIN PLUG Y TERMINAL TO. SOCKET.VCTF 3C 0.75MMSQ BLACK,P

Assured Systems

Assured Systems is a leading technology company with over 1,500 regular clients in 80 countries, deploying over 85,000 systems to a diverse customer base in 12 years of business. We offer high-quality and innovative rugged computing, display, networking and data collection solutions to the embedded, industrial, and digital-out-of-home market sectors.

US

sales@assured-systems.com

Sales: +1 347 719 4508

Support: +1 347 719 4508

1309 Coffeen Ave
Ste 1200
Sheridan
WY 82801
USA

EMEA

sales@assured-systems.com

Sales: +44 (0)1785 879 050

Support: +44 (0)1785 879 050

Unit A5 Douglas Park
Stone Business Park
Stone
ST15 0YJ
United Kingdom

VAT Number: 120 9546 28

Business Registration Number: 07699660