

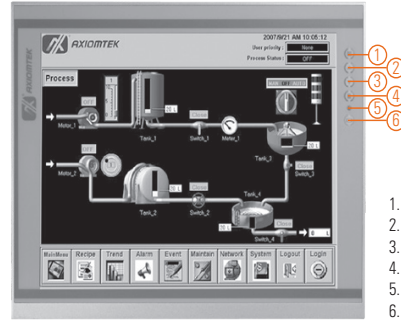
P6151-V3

NEW

15" XGA TFT Industrial LCD Monitor

Features

- 15" XGA TFT 420 nits LCD
- Resistive touch
- NEMA 4/12 (IP65) compliant front bezel
- Full range screw-type (locked) AC-in or 24 VDC in (optional)
- HDMI, DisplayPort, and VGA with multi-signal inputs
- Supports panel mount, wall mount, and VESA mount
- Built-in speakers



1. Menu
2. SEL+
3. SEL-
4. Exit
5. Power LED
6. Power switch



▲ Ultra-slim mechanism design

Introduction

The P6151-V3 is an ultra slim industrial LCD monitor, which adopts 15-inch 420 nits XGA LED backlight LCD display and supports multi-signal interfaces including DisplayPort, VGA, and HDMI. Featuring, screw-type adaptor plug design, and 12V/24V DC-in means it is fit for all kinds of industrial environments. With the compact mechanism design, users can enjoy free from space constraint. It is especially suitable for POI/POS, excellent HMI, and all kinds of heavy-duty industrial fields.

Specifications

Front Bezel	NEMA 4/12 (IP65)-compliant and metal front bezel																						
Mounting	Panel mount, wall mount or VESA arm FPMPMI mounting (video electronics standards association Flat Panel monitor physical mounting interface)																						
LCD Panel	<table border="0"> <tr><td>Display</td><td>15" XGA TFT LCD</td></tr> <tr><td>Max. Resolution</td><td>1024 x 768</td></tr> <tr><td>Max. Colors</td><td>16.2M</td></tr> <tr><td>Active Area (mm)</td><td>304.128 x 228.096</td></tr> <tr><td>Pixel Pitch (mm)</td><td>0.297 x 0.297</td></tr> <tr><td>Response Time</td><td>16ms</td></tr> <tr><td>Backlight</td><td>LED backlight</td></tr> <tr><td>Backlight MTBF</td><td>30,000 hrs</td></tr> <tr><td>Viewing Angle (H/V)</td><td>160°/160°</td></tr> <tr><td>Contrast Ratio</td><td>800 (TYP.)</td></tr> <tr><td>Brightness (cd/m²)</td><td>420 nits</td></tr> </table>	Display	15" XGA TFT LCD	Max. Resolution	1024 x 768	Max. Colors	16.2M	Active Area (mm)	304.128 x 228.096	Pixel Pitch (mm)	0.297 x 0.297	Response Time	16ms	Backlight	LED backlight	Backlight MTBF	30,000 hrs	Viewing Angle (H/V)	160°/160°	Contrast Ratio	800 (TYP.)	Brightness (cd/m ²)	420 nits
Display	15" XGA TFT LCD																						
Max. Resolution	1024 x 768																						
Max. Colors	16.2M																						
Active Area (mm)	304.128 x 228.096																						
Pixel Pitch (mm)	0.297 x 0.297																						
Response Time	16ms																						
Backlight	LED backlight																						
Backlight MTBF	30,000 hrs																						
Viewing Angle (H/V)	160°/160°																						
Contrast Ratio	800 (TYP.)																						
Brightness (cd/m ²)	420 nits																						
Display Control	OSD (on screen display)																						
Input Signal	<table border="0"> <tr><td>DisplayPort</td></tr> <tr><td>VGA</td></tr> <tr><td>HDMI</td></tr> <tr><td>Touchscreen: USB interface</td></tr> </table>	DisplayPort	VGA	HDMI	Touchscreen: USB interface																		
DisplayPort																							
VGA																							
HDMI																							
Touchscreen: USB interface																							

Specifications

I/O Connectors	1 x USB for touchscreen version 1 x Audio (Line-in) 1 x VGA 1 x DisplayPort 1 x HDMI 1 x Power input with screw type connector (AC version) 1 x Power input with terminal block (DC version)
Audio	2 x Speaker
Power Supply	AC version: 100 - 240 VAC-DC, 12V3A, 36W power adapter DC version: 24 VDC
Power Consumption	14W
Touchscreen	5-wire resistive touch
Dimensions	377.9 mm (14.88") (W) x 58 mm (2.28") (D) x 309.3 mm (12.18") (H)
Packing Dimensions	520 mm (20.47") (W) x 196 mm (7.71") (D) x 547 mm (21.53") (H)
Weight (net/gross)	3.7 kg (8.15 lb)/5.9 kg (13 lb)
Environment	Operating temperature: 0°C to +50°C (+32°F to +122°F) Relative humidity: 10% to 90% @ +40°C, non-condensing
Packing List	1 x P6151-V3 unit 1 x VGA cable 1 x USB cable for touch 1 x Audio cable 1 x Adapter (AC Version) 1 x 3-pin Terminal block (DC version only)
Certificate	CE

Ordering Information

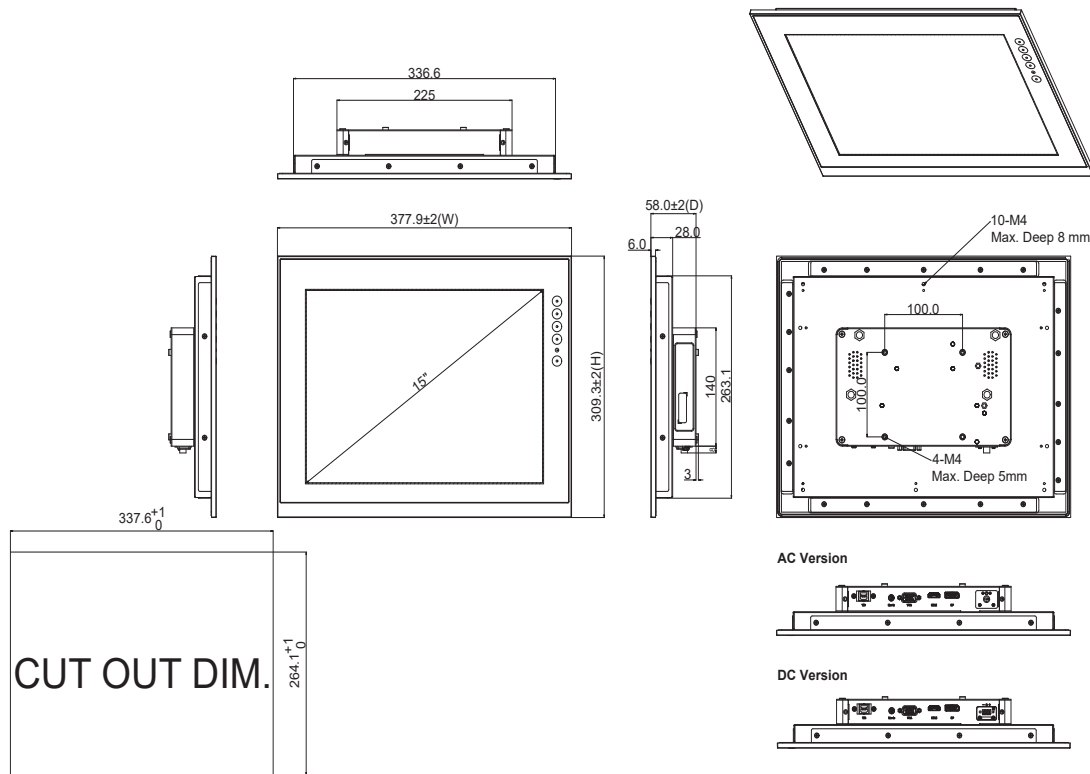
P6151PR-AC-U-V3 (P/N: E226151116)	15" industrial monitor with resistive touch screen (USB interface), and AC version
P6151PR-DC-U-V3 (P/N: E226151118)	15" industrial monitor with resistive touch screen (USB interface), and DC version

* Other configuration by request
* Specification and certifications may vary based on different requirements

Optional Accessories

59902000030E	US 1.8M power cord
59904000050E	UK 1.83M power cord
59903000080E	EU 1.83M power cord
590000012700	HDMI cable
59461713910E	DisplayPort cable
881261510A0E	Panel mount kit
881231770A0E	Wall mount kit
E226171119	Desktop stand

Dimensions



Assured Systems

Assured Systems is a leading technology company with over 1,500 regular clients in 80 countries, deploying over 85,000 systems to a diverse customer base in 12 years of business. We offer high-quality and innovative rugged computing, display, networking and data collection solutions to the embedded, industrial, and digital-out-of-home market sectors.

US

sales@assured-systems.com

Sales: +1 347 719 4508
Support: +1 347 719 4508

1309 Coffeen Ave
Ste 1200
Sheridan
WY 82801
USA

EMEA

sales@assured-systems.com

Sales: +44 (0)1785 879 050
Support: +44 (0)1785 879 050

Unit A5 Douglas Park
Stone Business Park
Stone
ST15 0YJ
United Kingdom

VAT Number: 120 9546 28
Business Registration Number: 07699660