



Industrial Solutions Partner!

**SSF2945/SSH2945-E V2**

**29.3" Resizing LCD, 1000 nits LED backlight, 1920x710 ultra wide aspect ratio 16:6**

SSF/SSH2945-E V2 is an innovative ultra-wide, sunlight readable, LED backlight LCD display. It provides LCD panel with specific ratios for digital signage, public transportation, exhibition hall, department store, vending machine and industrial applications. Incorporating with A.D. control board and backlight design, it is high brightness and sunlight readable panel, can display high-quality video with energy-efficient.

**Key Features**

- Resizing LCD
- Ultra Wide Screen (16 : 6)
- Sunlight Readable
- LED Backlight
- High Brightness 1000 nits
- Low Power Consumption
- Wide Dimming
- Life Expectancy (70,000hrs)



**Specifications**

V1

|                                      |  |
|--------------------------------------|--|
| <b>Model No.</b>                     | <b>SSF2945/SSH2945-E V2</b>                                |
| <b>Description</b>                   | 29.3" Resizing LCD, 1000 nits LED backlight                |
| <b>Display Area</b>                  | 698.4*258.2 mm   |
| <b>Brightness</b>                    | 1000 cd/m <sup>2</sup>                                     |
| <b>Resolution</b>                    | 1920 x 710   |
| <b>Aspect Ratio</b>                  | 16 : 6   |
| <b>Contrast Ratio</b>                | 3000:1   |
| <b>Pixel Pitch (mm)</b>              | 0.3637 x 0.3637  |
| <b>Pixel Per Inch (PPI)</b>          | 69.7   |
| <b>Viewing Angle</b>                 | 178°(H), 178°(V)   |
| <b>Display Colors</b>                | 16.7M  |
| <b>Response Time (Typical)</b>       | 8 ms   |
| <b>Sync</b>                          | LVDS   |
| <b>Power Consumption</b>             | 48W/53W  |
| <b>Dimensions (mm)</b>               | 735.4 x 298.9 x 18.0                                       |
| <b>Weight (Net)</b>                  | 3.2 kg (VHB only)  |
| <b>LED Driving Board</b>             | <b>LID29A</b>  |
| <b>Control Board (Optional)</b>      | <b>AD2662GD / AD2662GDVAR</b>                              |
| <input type="checkbox"/> AD2662GD    | VGA + DVI  |
| <input type="checkbox"/> AD2662GDVAR | VGA + DVI (Optional AV/ S-Video / Component / Audio)       |
| <input type="checkbox"/> Others      |  |
| <b>F / R Control Button</b>          | 5 Key / 4 Key  |
| <input type="checkbox"/> 4 Key       | Power Switch, Menu, Select (+,-),                          |
| <input type="checkbox"/> 5 Key       | Power Switch, Menu, Select (+,-),Auto                      |
| <b>OSD Menu</b>                      | Brightness, Contrast, H/V Position, Color, Phase, Clock... |
| <b>Optional</b>                      | <input type="checkbox"/> Touch Screen                      |

Specifications are subject to change without notice.  
All brands or product names are trademarks or registered trademarks of their respective companies.

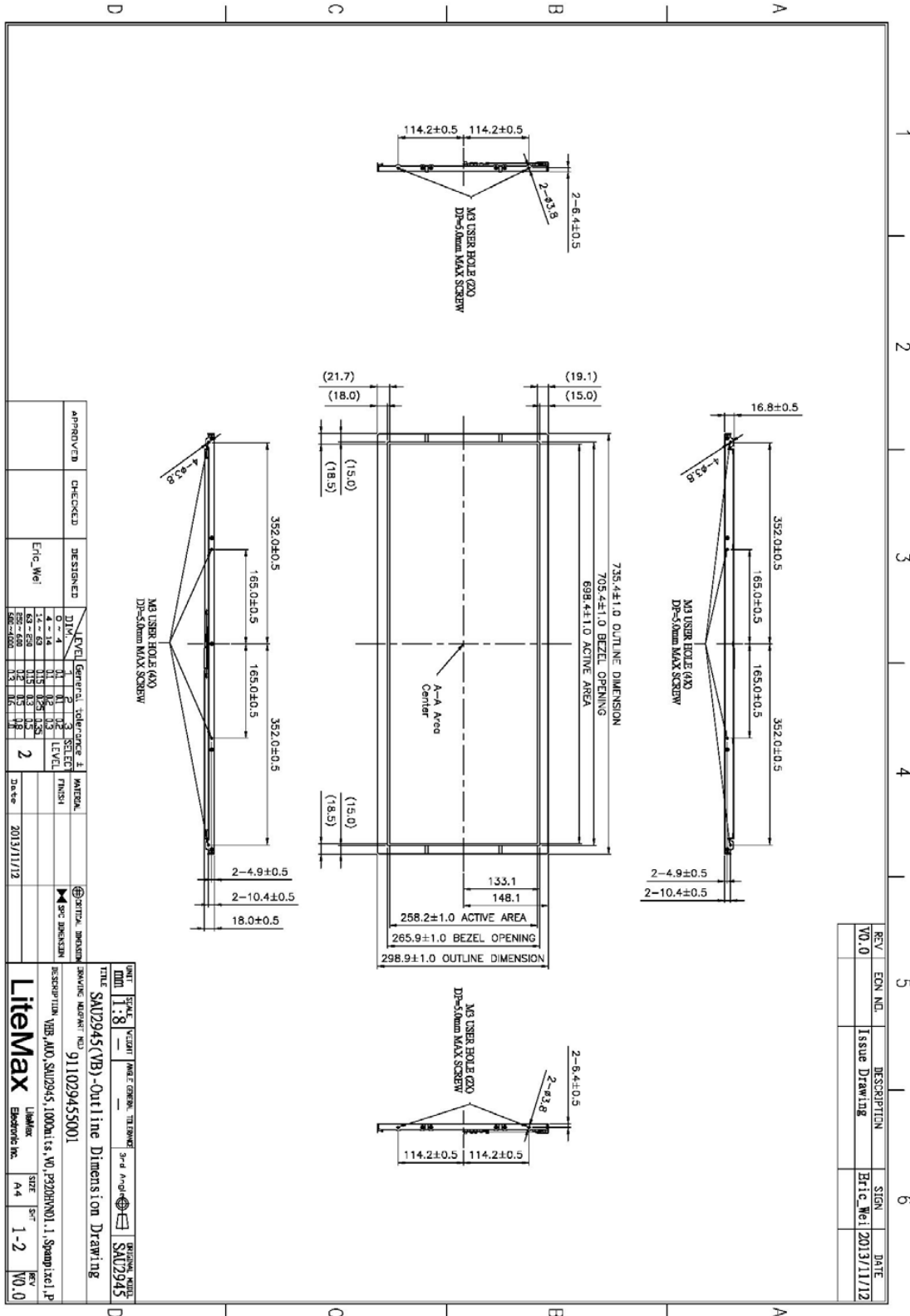
**SSF**= Panel+ LED Driving Board  
**SSH**= Panel+ LED Driving Board + Control Board



Industrial Solutions Partner!

**Mechanical Drawing**

**Outline Dimensions**



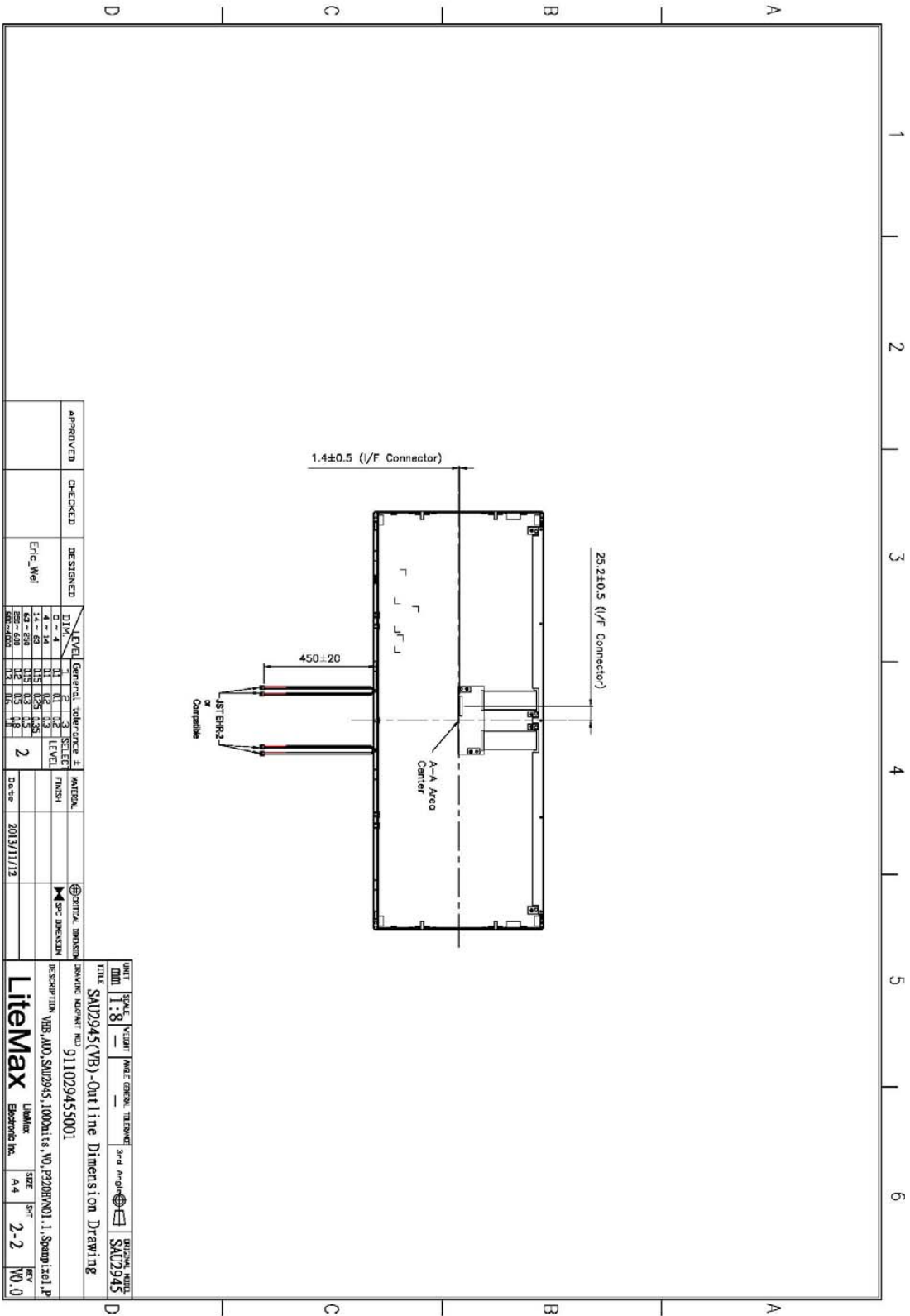
| APPROVED | CHECKED | DESIGNED | DWG. NO.     | ELEV. | General | tolerance ± | MATERIAL |
|----------|---------|----------|--------------|-------|---------|-------------|----------|
|          |         | Eric_Mei | 911029455001 | 1     | 1       | 3           |          |
|          |         |          |              | 2     | 2       | 3           |          |
|          |         |          |              | 3     | 3       | 3           |          |
|          |         |          |              | 4     | 4       | 3           |          |
|          |         |          |              | 5     | 5       | 3           |          |
|          |         |          |              | 6     | 6       | 3           |          |
|          |         |          |              | 7     | 7       | 3           |          |
|          |         |          |              | 8     | 8       | 3           |          |
|          |         |          |              | 9     | 9       | 3           |          |
|          |         |          |              | 10    | 10      | 3           |          |
|          |         |          |              | 11    | 11      | 3           |          |
|          |         |          |              | 12    | 12      | 3           |          |
|          |         |          |              | 13    | 13      | 3           |          |
|          |         |          |              | 14    | 14      | 3           |          |
|          |         |          |              | 15    | 15      | 3           |          |
|          |         |          |              | 16    | 16      | 3           |          |
|          |         |          |              | 17    | 17      | 3           |          |
|          |         |          |              | 18    | 18      | 3           |          |
|          |         |          |              | 19    | 19      | 3           |          |
|          |         |          |              | 20    | 20      | 3           |          |
|          |         |          |              | 21    | 21      | 3           |          |
|          |         |          |              | 22    | 22      | 3           |          |
|          |         |          |              | 23    | 23      | 3           |          |
|          |         |          |              | 24    | 24      | 3           |          |
|          |         |          |              | 25    | 25      | 3           |          |
|          |         |          |              | 26    | 26      | 3           |          |
|          |         |          |              | 27    | 27      | 3           |          |
|          |         |          |              | 28    | 28      | 3           |          |
|          |         |          |              | 29    | 29      | 3           |          |
|          |         |          |              | 30    | 30      | 3           |          |
|          |         |          |              | 31    | 31      | 3           |          |
|          |         |          |              | 32    | 32      | 3           |          |
|          |         |          |              | 33    | 33      | 3           |          |
|          |         |          |              | 34    | 34      | 3           |          |
|          |         |          |              | 35    | 35      | 3           |          |
|          |         |          |              | 36    | 36      | 3           |          |
|          |         |          |              | 37    | 37      | 3           |          |
|          |         |          |              | 38    | 38      | 3           |          |
|          |         |          |              | 39    | 39      | 3           |          |
|          |         |          |              | 40    | 40      | 3           |          |
|          |         |          |              | 41    | 41      | 3           |          |
|          |         |          |              | 42    | 42      | 3           |          |
|          |         |          |              | 43    | 43      | 3           |          |
|          |         |          |              | 44    | 44      | 3           |          |
|          |         |          |              | 45    | 45      | 3           |          |
|          |         |          |              | 46    | 46      | 3           |          |
|          |         |          |              | 47    | 47      | 3           |          |
|          |         |          |              | 48    | 48      | 3           |          |
|          |         |          |              | 49    | 49      | 3           |          |
|          |         |          |              | 50    | 50      | 3           |          |
|          |         |          |              | 51    | 51      | 3           |          |
|          |         |          |              | 52    | 52      | 3           |          |
|          |         |          |              | 53    | 53      | 3           |          |
|          |         |          |              | 54    | 54      | 3           |          |
|          |         |          |              | 55    | 55      | 3           |          |
|          |         |          |              | 56    | 56      | 3           |          |
|          |         |          |              | 57    | 57      | 3           |          |
|          |         |          |              | 58    | 58      | 3           |          |
|          |         |          |              | 59    | 59      | 3           |          |
|          |         |          |              | 60    | 60      | 3           |          |
|          |         |          |              | 61    | 61      | 3           |          |
|          |         |          |              | 62    | 62      | 3           |          |
|          |         |          |              | 63    | 63      | 3           |          |
|          |         |          |              | 64    | 64      | 3           |          |
|          |         |          |              | 65    | 65      | 3           |          |
|          |         |          |              | 66    | 66      | 3           |          |
|          |         |          |              | 67    | 67      | 3           |          |
|          |         |          |              | 68    | 68      | 3           |          |
|          |         |          |              | 69    | 69      | 3           |          |
|          |         |          |              | 70    | 70      | 3           |          |
|          |         |          |              | 71    | 71      | 3           |          |
|          |         |          |              | 72    | 72      | 3           |          |
|          |         |          |              | 73    | 73      | 3           |          |
|          |         |          |              | 74    | 74      | 3           |          |
|          |         |          |              | 75    | 75      | 3           |          |
|          |         |          |              | 76    | 76      | 3           |          |
|          |         |          |              | 77    | 77      | 3           |          |
|          |         |          |              | 78    | 78      | 3           |          |
|          |         |          |              | 79    | 79      | 3           |          |
|          |         |          |              | 80    | 80      | 3           |          |
|          |         |          |              | 81    | 81      | 3           |          |
|          |         |          |              | 82    | 82      | 3           |          |
|          |         |          |              | 83    | 83      | 3           |          |
|          |         |          |              | 84    | 84      | 3           |          |
|          |         |          |              | 85    | 85      | 3           |          |
|          |         |          |              | 86    | 86      | 3           |          |
|          |         |          |              | 87    | 87      | 3           |          |
|          |         |          |              | 88    | 88      | 3           |          |
|          |         |          |              | 89    | 89      | 3           |          |
|          |         |          |              | 90    | 90      | 3           |          |
|          |         |          |              | 91    | 91      | 3           |          |
|          |         |          |              | 92    | 92      | 3           |          |
|          |         |          |              | 93    | 93      | 3           |          |
|          |         |          |              | 94    | 94      | 3           |          |
|          |         |          |              | 95    | 95      | 3           |          |
|          |         |          |              | 96    | 96      | 3           |          |
|          |         |          |              | 97    | 97      | 3           |          |
|          |         |          |              | 98    | 98      | 3           |          |
|          |         |          |              | 99    | 99      | 3           |          |
|          |         |          |              | 100   | 100     | 3           |          |

| REV. | EON. NO. | DESCRIPTION   | SIGN.    | DATE       |
|------|----------|---------------|----------|------------|
| 0    |          | Issue Drawing | Eric_Mei | 2013/11/12 |

|      |       |      |                                       |             |
|------|-------|------|---------------------------------------|-------------|
| UNIT | SCALE | DATE | PROJECT                               | DRAWING NO. |
| MM   | 1:8   |      | SAU2945(VB)-Outline Dimension Drawing | SAU2945     |

|               |  |
|---------------|--|
| DESCRIPTION   | YWB, A10, SAU2945, 1000x115, V0, P2020HMD1, 1, Spano, 2x1, P |
| SAVING NUMBER | 911029455001   |
| TITLE         | SAU2945(VB)-Outline Dimension Drawing                        |
| PROJECT       | SAU2945  |
| DATE          | 2013/11/12   |
| DESIGNED      | Eric_Mei   |
| CHECKED       |  |
| APPROVED      |  |

A4 297x710mm



|          |         |          |      |       |         |           |    |          |        |
|----------|---------|----------|------|-------|---------|-----------|----|----------|--------|
| APPROVED | CHECKED | DESIGNED | DATE | LEVEL | GENERAL | REFERENCE | 1  | MATERIAL | FINISH |
|          |         | Eric Wei |      | 1     | 1       | 1         | 1  |          |        |
|          |         |          |      | 2     | 2       | 2         | 2  |          |        |
|          |         |          |      | 3     | 3       | 3         | 3  |          |        |
|          |         |          |      | 4     | 4       | 4         | 4  |          |        |
|          |         |          |      | 5     | 5       | 5         | 5  |          |        |
|          |         |          |      | 6     | 6       | 6         | 6  |          |        |
|          |         |          |      | 7     | 7       | 7         | 7  |          |        |
|          |         |          |      | 8     | 8       | 8         | 8  |          |        |
|          |         |          |      | 9     | 9       | 9         | 9  |          |        |
|          |         |          |      | 10    | 10      | 10        | 10 |          |        |
|          |         |          |      | 11    | 11      | 11        | 11 |          |        |
|          |         |          |      | 12    | 12      | 12        | 12 |          |        |
|          |         |          |      | 13    | 13      | 13        | 13 |          |        |
|          |         |          |      | 14    | 14      | 14        | 14 |          |        |
|          |         |          |      | 15    | 15      | 15        | 15 |          |        |
|          |         |          |      | 16    | 16      | 16        | 16 |          |        |
|          |         |          |      | 17    | 17      | 17        | 17 |          |        |
|          |         |          |      | 18    | 18      | 18        | 18 |          |        |
|          |         |          |      | 19    | 19      | 19        | 19 |          |        |
|          |         |          |      | 20    | 20      | 20        | 20 |          |        |

A4 297x210mm

|   |       |          |      |         |           |                 |          |
|---|-------|----------|------|---------|-----------|-----------------|----------|
| DATE  | SCALE | VELOCITY | NAME | GENERAL | TELEPHONE | 3rd Fl. And-100 | REVISION |
| 1/18  | 1:1   |          |      |         |           |                 | SAU2945  |
| TITLE: SAU2945(VB) - Outline Dimension Drawing                          |       |          |      |         |           |                 |          |
| DESCRIPTION: VBB A00, SAU2945, 1000 Units, NO P320RHV01, 1, Standard 1P |       |          |      |         |           |                 |          |
| DRAWING NUMBER: 911029453001  |       |          |      |         |           |                 |          |
| LITE MAX  |       |          |      |         |           |                 |          |
| LITE MAX  |       |          |      |         |           |                 |          |
| EMERSON INC.  |       |          |      |         |           |                 |          |
| SIZE  | SCALE | REV      |      |         |           |                 |          |
| A4  | 2-2   | V0.0     |      |         |           |                 |          |



*Industrial Solutions Partner!*

### Ordering Information

| Model Name      | Description   |
|-----------------|---|
| SSF2945-ENN-A11 | 29.3",1000nits,1920*710.LID29A,V02(2 in 1)                  |
| SSH2945-ENN-G11 | 29.3",1000nits,1920*710.LID29A,AD2662GD,DC 12V.V02(2 in 1)  |
| SSH2945-ENN-G12 | 29.3",1000nits,1920*710.LID29A,AD2662GDHM,DC12V.V02(2 in 1) |
|                 |   |

### Optional Accessories

| Part Number             | Description  |
|-------------------------|--|
| 810618301010 (Optional) | CABLE.POWER.AC.1830mm.(US Type).3PIN PLUG TO SOCKET.SVT(SPT-2 )18AWG 3C BLACK,P.         |
| 810618301090 (Optional) | CABLE,POWER,AC,1830mm.(EU Type) 3PIN PLUG TO.SOCKET,H05VV-F 3G.0.75MMSQ BLACK,P          |
| 810618301050 (Optional) | CABLE,POWER,AC,1830mm.UK(FUSE) 3PIN PLUG TO.SOCKET,H05VV-F 3C(3G) 0.75MMSQ BLACK,P       |
| 810618301170 (Optional) | CABLE.POWER,AC,1830mm. (AU Type) 3PIN PLUG TO 2P SOCKET.LTSA 0.75MMSQ BLACK,P            |
| 810618301030 (Optional) | CABLE.POWER.AC.1830mm.(JP Type).2PIN PLUG Y TERMINAL TO. SOCKET.VCTF 3C 0.75MMSQ BLACK,P |
|                         |  |

## Assured Systems

Assured Systems is a leading technology company with over 1,500 regular clients in 80 countries, deploying over 85,000 systems to a diverse customer base in 12 years of business. We offer high-quality and innovative rugged computing, display, networking and data collection solutions to the embedded, industrial, and digital-out-of-home market sectors.

### US

[sales@assured-systems.com](mailto:sales@assured-systems.com)

Sales: +1 347 719 4508  
Support: +1 347 719 4508

1309 Coffeen Ave  
Ste 1200  
Sheridan  
WY 82801  
USA

### EMEA

[sales@assured-systems.com](mailto:sales@assured-systems.com)

Sales: +44 (0)1785 879 050  
Support: +44 (0)1785 879 050

Unit A5 Douglas Park  
Stone Business Park  
Stone  
ST15 0YJ  
United Kingdom

VAT Number: 120 9546 28  
Business Registration Number: 07699660