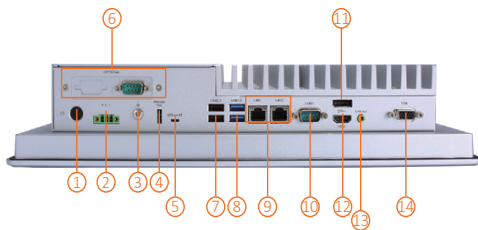
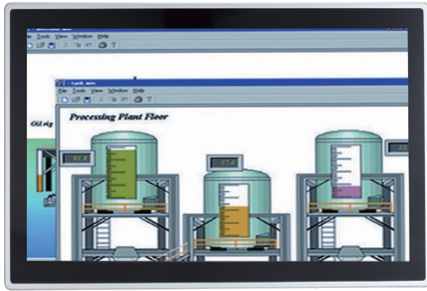


GOT315W-521

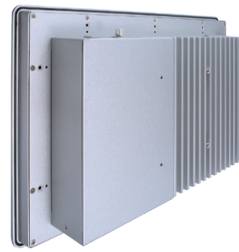
15.6" WXGA TFT Multi-touch Panel Computer with LGA1151 9th/8th Gen Intel® Core™ i7/i5/i3, Intel® Pentium® Gold or Intel® Celeron® Processor (up to 35W)



- | | |
|--|--------------------------------|
| 1. Power button | 8. 2 x USB 3.0 |
| 2. Phoenix small type connector | 9. 2 x LAN |
| 3. Grounding hole | 10. 1 x COM for RS-232/422/485 |
| 4. Remote power switch | 11. 1 x DisplayPort |
| 5. AT/ATX switch | 12. 1 x HDMI |
| 6. Optional flexible I/O
(default 1 x RS-232) | 13. 1 x Line-out |
| 7. 2 x USB 2.0 | 14. 1 x VGA |

Features

- 15.6" WXGA projected capacitive multi-touch widescreen
- Fanless design with LGA1151 9th/8th gen Intel® Core™ i7/i5/i3, Intel® Pentium® Gold or Intel® Celeron® processor
- Supports WLAN module and antenna (optional)
- 2.5" SATA HDD/SSD
- 2 LAN, 4 USB, 2 COM, 1 HDMI, 1 DisplayPort, and 1 VGA
- IP65-rated aluminum front bezel
- Supports panel mount, VESA mount, and wall mount



▲ Rear view

Introduction

The GOT315W-521-PCT is a multi-touch fanless type panel PC with 15.6-inch WXGA LCD and supports LGA1151 9th/8th gen Intel® Core™ i7/i5/i3, Intel® Pentium® Gold or Intel® Celeron® processor (up to 35W). It also provides M.2 Key E and PCI Express Mini Card slots for add-on devices such like Wi-Fi module for factory automation, and oil pipe monitoring system.

15.6-inch WXGA LCD with Projected Capacitive Multi-touch

The 15.6" WXGA touch panel PC supports 400 nits brightness, able to display contents in HD resolution. With projected capacitive multi-touch screen, users can operate the device more directly and friendly. The touch glass surface is up to 3H for anti-scratch purpose.

Specifications

Front Bezel	IP65 front bezel	
LCD Panel	Display Type	15.6" WXGA TFT LCD
	Brightness (cd/m ²)	400 nits
	Resolution	1366 x 768
Main System	CPU	LGA1151 9th/8th gen Intel® Core™ i7/i5/i3, Intel® Pentium® Gold or Intel® Celeron® processor (up to 35W)
	Chipset	Intel® H310
	System Memory	1 x 260-pin DDR4-2666/2400 SO-DIMM, up to 32GB
	BIOS	AMI UEFI BIOS
	Storage	1 x mSATA
		1 x 2.5" SATA HDD/SSD (7 mm and 9.5 mm height; removable)
	Watchdog Timer	255 levels, 0 to 255 sec.
Onboard Graphics	Intel® integrated Gfx graphic engine	

I/O Connector	1 x 9-pin D-sub Male for RS-232 1 x COM for RS-232/422/485 2 x RJ-45 for GbE 2 x USB 3.0 2 x USB 2.0 1 x Phoenix type connector for DC power input 1 x Switch for power on/off (ATX) 1 x Line-out 1 x HDMI 1 x DisplayPort 1 x VGA 1 x Remote power switch 1 x AT/ATX switch (DC type only) 1 x Grounding hole (DC version)
TPM	TPM 2.0
Expansion Interface	1 x Full-size PCI-Express Mini Card slot (PCIe + SATA + USB) 1 x M.2 Key E 2230 (for Wi-Fi)
Touchscreen	Projected capacitive multi-touch
Power Supply	+12V/+19V/+24VDC 1 x terminal block
Power Consumption	70W
Dimensions	396.8 mm (15.6") (W) x 77 mm (3.04") (D) x 247.1 mm (9.73") (H)
Packing Dimensions	535 mm (21.06") (W) x 485 mm (19.09") (D) x 196 mm (7.71") (H)
Weight (net/gross)	6.5 kg(14.3 lb)/8.5kg(18.7 lb)
Operating Temperature	0°C to +50°C (+32°F to +122°F)
Relative Humidity	20% to 90% @ +40°C; non-condensing
Operation Vibration	1G, 10- 500 Hz, random for 2.5" SATA HDD
Certifications	CE, EN 61000-6-2, EN 61000-6-4

Ordering Information

GOT315W-521-PCT-DC (P/N: E22B315105)	15.6" WXGA TFT fanless touch panel computer with LGA1151 9th/8th gen Intel® Core™ i7/i5/i3, Intel® Pentium® Gold or Intel® Celeron® processor (up to 35W), projected capacitive multi-touch screen, and 24 VDC terminal block with small Phoenix connector
--------------------------------------	--

* Other configuration by request

* Specification and certifications may vary based on different requirements

Packing List

1 x GOT315WL-521
1 x Phoenix connector

Optional Accessories

4G LTE Kit	
Wi-Fi kit	
881231770A0E	Wall mount kit
50966224010E	Adaptor 24V/120W, wire only, FSP120-AAAN3
881261570A0E	Panel mount kit

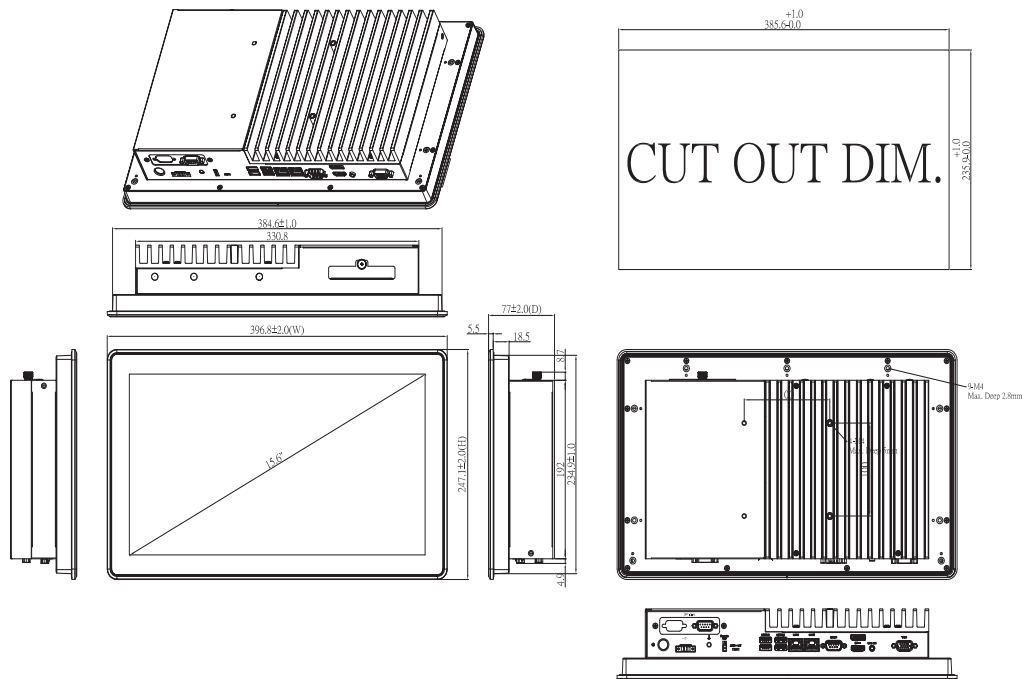
Optional EOS Installation

Windows® 10 IoT Enterprise

Optional OS Installation

Windows® 10

Dimensions



Assured Systems

Assured Systems is a leading technology company with over 1,500 regular clients in 80 countries, deploying over 85,000 systems to a diverse customer base in 12 years of business. We offer high-quality and innovative rugged computing, display, networking and data collection solutions to the embedded, industrial, and digital-out-of-home market sectors.

US

sales@assured-systems.com

Sales: +1 347 719 4508
Support: +1 347 719 4508

1309 Coffeen Ave
Ste 1200
Sheridan
WY 82801
USA

EMEA

sales@assured-systems.com

Sales: +44 (0)1785 879 050
Support: +44 (0)1785 879 050

Unit A5 Douglas Park
Stone Business Park
Stone
ST15 0YJ
United Kingdom

VAT Number: 120 9546 28
Business Registration Number: 07699660