

EC543-CS Q370

8th/9th Gen Intel® Core™
Modular-Designed Embedded System



KEY FEATURES



DDR4

DDR4 SODIMM up to 64GB



PoE

Support 4 PoE (EC543-CS6G86E-Q)



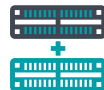
Three Independent Displays

1 VGA + 2 HDMI/DP++ (auto detection)



Support 5G Communication

Support 5G communication



Multiple Expansion

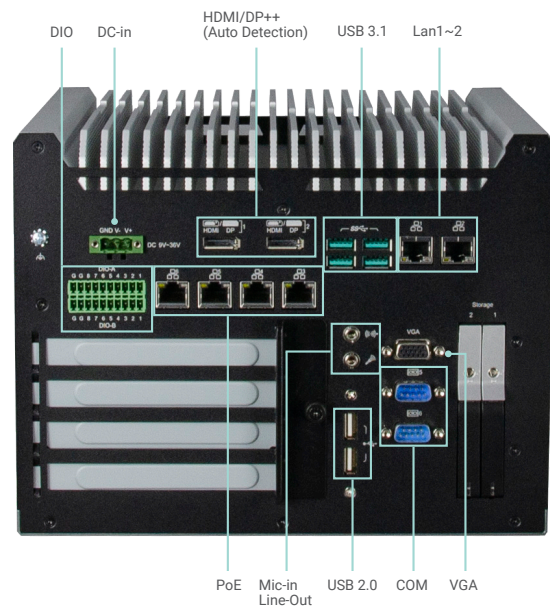
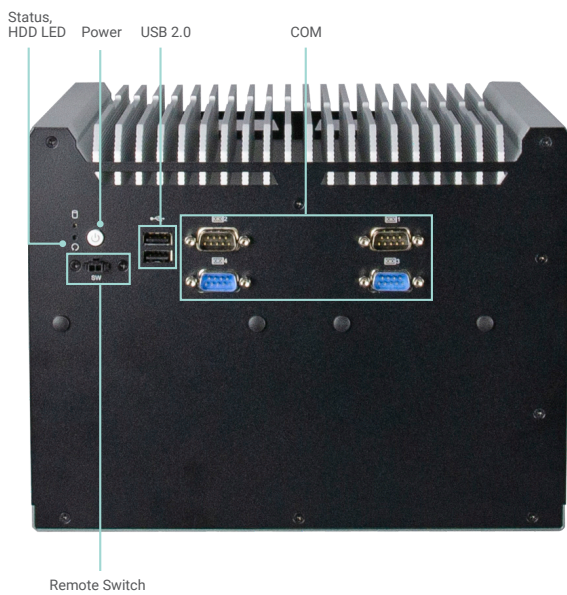
3 PCIe, 1 PCI and 3 M.2 slots support NVMe



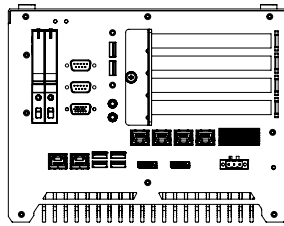
Wide-Temperature

Operating Temperature: -20 to 70°C

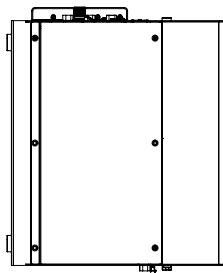
PANEL



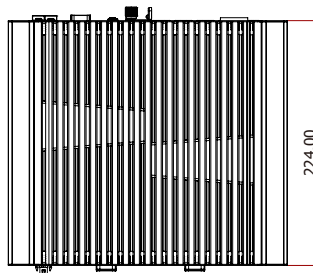
DIMENSIONS



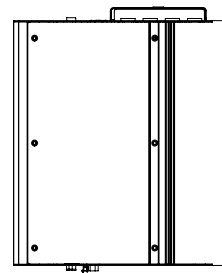
Front View



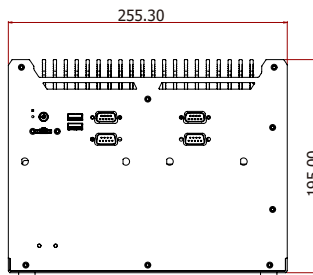
Left View



224.00



Right View

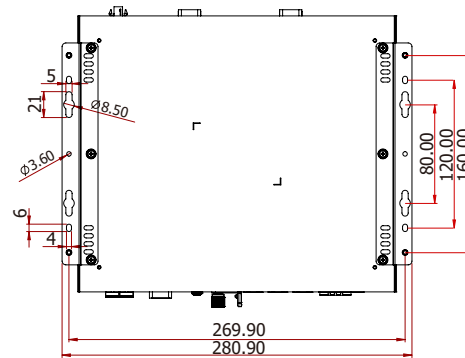
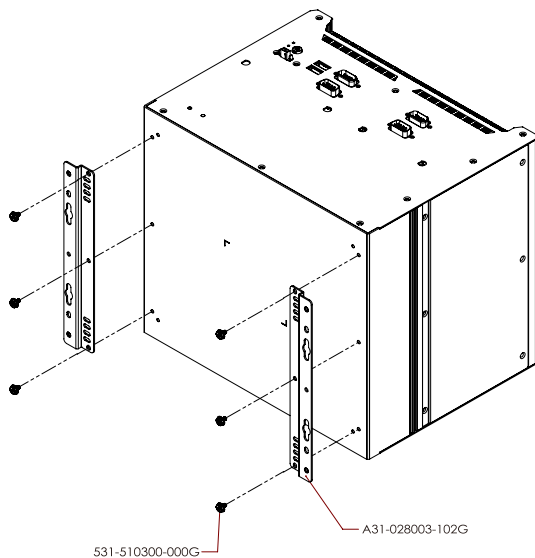


Rear View

255.30

195.00

WALL MOUNTING



SPECIFICATION

| | | | | |
|-----------------|----------------|--|--|--|
| SYSTEM | Processor | 8th/9th Generation Intel® Core™ Processors, LGA 1151 Intel® Core™ i7-9700TE , Octa Cores, 12M Cache, up to 3.8 GHz, 35W Intel® Core™ i5-9500TE , Hexa Cores, 9M Cache, up to 3.6 GHz), 35W Intel® Core™ i3-9100TE, Quad Cores, 6M Cache, up to 3.2 GHz, 35W Intel® Core™ i7-8700T Processor, Hexa Core, 12M Cache, 2.4GHz (4GHz), 35W Intel® Core™ i5-8500T Processor, Hexa Core, 9M Cache, 2.1GHz (3.5GHz), 35W Intel® Core™ i3-8100T Processor, Quad Core, 6M Cache, 3.1GHz, 35W Intel® Pentium® Processor G5400T, Dual Core, 4M Cache, 3.1GHz, 35W Intel® Celeron® Processor G4900T, Dual Core, 2M Cache, 3.1GHz, 35W | | |
| | Chipset | Intel® Q370 Chipset | | |
| | Memory | Two 260-pin DDR4 2400/2666MHz SODIMM up to 64GB | | |
| | BIOS | AMI SPI 128Mbit | | |
| | GRAPHICS | Controller | Intel® HD Graphics | |
| Feature | | OpenGL up to 5.0, DirectX 11, OpenCL 2.1 HW Decode: HEVC/H.265, H.264, M/JPEG, MPEG2, VC1/WMV9, VP8 (8-bit), VP9 (10-bit) HW Encode: HEVC/H.265, M/JPEG, MPEG2, VP8 | | |
| Display | | 1 x VGA 2 x HDMI/DP++ (auto detection) | VGA: resolution up to 1920x1200 @ 60Hz HDMI: resolution up to 4096x2160 @ 30Hz DP++: resolution up to 4096x2304 @ 60Hz | |
| Triple Displays | | VGA + 2 x HDMI/DP++ (auto detection) | | |
| STORAGE | | Interface | 2 x 2.5" SATA 3.0 Drive Bay support RAID 0/1 | |
| EXPANSION | Interface | 1 x M.2 2230 E key (PCIe/USB 2.0) 1 x M.2 2280 M key (PCIe x4 NVMe/SATA) 1 x M.2 3042/3052 B key (PCIe/USB 3.0) 1 x PCI slot 3 x PCIe | | |
| AUDIO | Audio Codec | ALC888 | | |
| ETHERNET | Controller | 1 x Intel® I210AT PCIe (10/100/1000Mbps) 1 x Intel® I219LM with iAMT11.0 PCIe (10/100/1000Mbps) (only Core i7/i5 supports iAMT) | | |
| | Interface | RJ-45 | | |
| LED | Indicators | 1 x Status LED 1 x HDD LED | | |
| FRONT I/O | Serial | 4 x RS-232/422/485 (DB-9) | | |
| | USB | 2 x USB 2.0 (type A) | | |
| | Buttons | 1 x Power button 1 x Reset button | | |
| | Antenna | 4 x Antenna hole (WiFi) | | |
| REAR I/O | Ethernet/PoE | -EC543-CS6G86E-Q 2 x GbE (RJ-45) 4 x PoE -EC543-CS6G86-Q 6 x GbE (RJ-45) -EC543-CS6861-Q/EC543-CS98A1-Q 2 x GbE (RJ-45) | | |
| | | COM | -EC543-CS6861-Q/EC543-CS6G86E-Q/EC543-CS6G86-Q 2 x RS232 -EC543-CS98A1-Q 3 x RS232/422/485 2 x RS232 | |
| | USB | -EC543-CS6861-Q/EC543-CS6G86E-Q/EC543-CS6G86-Q 4 x USB 3.1(Gen.2) 2 x USB2.0 -EC543-CS98A1-Q 4 x USB 3.1(Gen.2) 4 x USB 3.1(Gen.1) | | |
| | DIO | -EC543-CS6G86E-Q/EC543-CS6G86-Q 16 bits DIO -EC543-CS6861-Q/EC543-CS98A1-Q 8 bits DIO | | |
| | Display | 1 x VGA 2 x HDMI/DP++ (auto detection) | | |
| | Audio | 1 x Line-out 1 x Mic-in | | |
| | WATCHDOG TIMER | Output & Interval | System reset, programmable via software from 1 to 255 seconds | |
| | SECURITY | TPM | TPM 2.0 | |
| | POWER | Type | Wide range 9~36V | |
| | | Connector | 3-pole terminal block 2-pin power extension switch connector | |
| OS SUPPORT | OS Support | Windows 10 IoT Enterprise 64 Bit Linux (available upon request) | | |

SPECIFICATION

| | | |
|------------------------------|------------------------|---|
| ENVIRONMENT | Operating Temperature | -20 to 70°C (SSD or mSATA) |
| | Storage Temperature | -20 to 85°C |
| | Relative Humidity | 5 to 95% RH (non-condensing) |
| MECHANICAL | Construction | Metal + Aluminum |
| | Mounting | Wall mount |
| | Dimensions (W x H x D) | 255.3 x 195 x 224mm |
| | Weight | 5.4 kg |
| STANDARDS AND CERTIFICATIONS | Shock | Half sine wave 3G, 11ms, 3 shock per axis |
| | Vibration | IEC68-2-64 |
| | Certifications | CE, FCC Class A |

PACKING LIST

| |
|--|
| 1 EC543-CS system unit |
| 1 M.2 slot screws |
| 1 terminal block 3-pole for DC input |
| 1 cable with 2 wire stripped and tinned to DC jack |

Assured Systems

Assured Systems is a leading technology company with over 1,500 regular clients in 80 countries, deploying over 85,000 systems to a diverse customer base in 12 years of business. We offer high-quality and innovative rugged computing, display, networking and data collection solutions to the embedded, industrial, and digital-out-of-home market sectors.

US

sales@assured-systems.com

Sales: +1 347 719 4508
Support: +1 347 719 4508

1309 Coffeen Ave
Ste 1200
Sheridan
WY 82801
USA

EMEA

sales@assured-systems.com

Sales: +44 (0)1785 879 050
Support: +44 (0)1785 879 050

Unit A5 Douglas Park
Stone Business Park
Stone
ST15 0YJ
United Kingdom

VAT Number: 120 9546 28
Business Registration Number: 07699660