

SBC-7114

EPIC

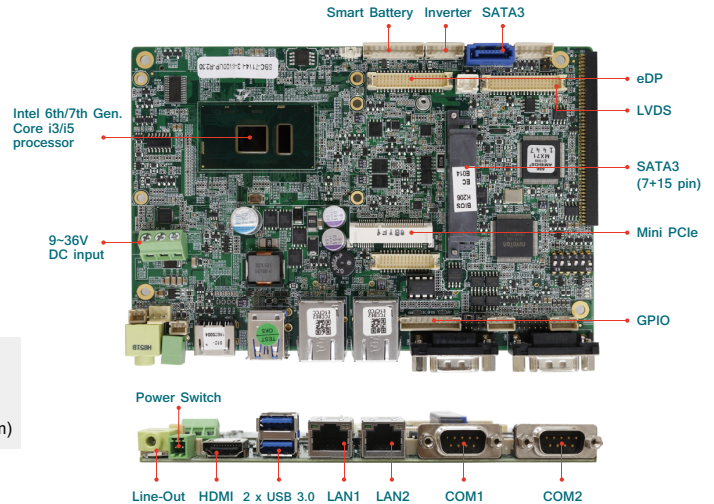
4" EPIC, 6th/7th Gen Intel Core i3/i5/i7 Processors, 1 x DDR4 SO-DIMM, LVDS/DP/HDMI/eD

Features

- Intel 6th/7th Gen Core i3/i5/i7 Processors
- 1 x SO-DIMM DDR4 2133MHz
- Three Independent Display Support with 4Kx2K
- Support Smart Battery
- Wide Operating Temperature, Support -40°C~85°C
- Wide Range DC 9~36V Input
- TPM 2.0 (Trusted Platform Module) Support

Packing List

- 1 x SBC-7114 4" SBC
- 1 x Driver CD
- 1 x CR2477 Battery
- 1 x SATA 7+15-Pin to SATA 7-Pin/SATA Power 2-Pin Cable (L=18cm)



Specifications

System

Form Factor	4" EPIC
Processor	6th Generation Intel Core i7-6600U Processor (4M Cache, 2.60 GHz) Intel Core i5-6300U Processor (3M Cache, 2.40 GHz) Intel Core i3-6100U Processor (3M Cache, 2.30 GHz) 7th Generation Intel Core i7-7600U Processor (4M Cache, 2.80 GHz) Intel Core i5-7300U Processor (3M Cache, 2.60 GHz) Intel Core i3-7100U Processor (3M Cache, 2.40 GHz)
System Chipset	SoC
System Memory	1 x 260-Pin SO-DIMM up to 32GB DDR4 2133MHz
BIOS	AMI/UEFI BIOS

Display

Controller	Intel HD Graphics Series
eDP Interface	2 x 20-Pin header
TTL/LVDS Interface	1 x 18/24-bit Dual Channel LVDS
HDMI Interface	1 x HDMI
Resolution	Up to 3840 x 2160 for EDP Up to 1920 x 1080 for LVDS Up to 3840 x 2160 for HDMI

Mechanical & Environment

Board Size (L x M)	170 mm x 113 mm
Gross Weight	0.5 kg
Operating Temperature	-20°C~70°C (-4°F~158°F)
Storage Temperature	-40°C~85°C (-40°F~185°F)
Humidity	10%~90%, non-condensing, operating
Certificate	Meet RoHS 2.0/CE/FCC Class A

Expansion

Expansion	1 x mini PCIe slot (shared with mSATA)
------------------	--

Power Management

Power Input	Wide range DC 9~36V input
Power Connector	1 x 3-Pin power input connector

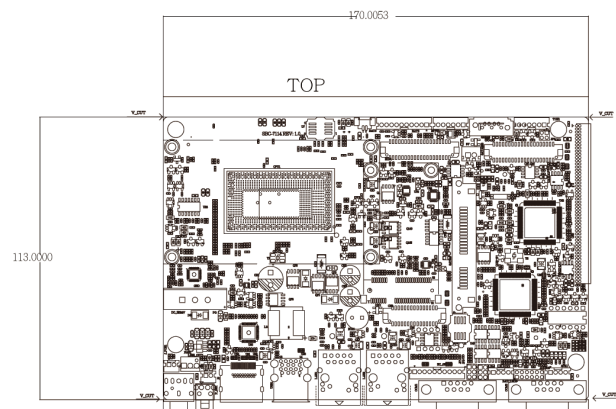
Ordering Information

SBC-7114	4" EPIC, 6th/7th Generation, Intel Skylake Core i7/i5/i3 Processors, SoC, SO-DIMM DDR4, DP/HDMI/eDP/LVDS
TB-528 Series	I/O Board for SBC-7114

I/O

Super I/O	ITE IT8518E Nuvoton NCT6106D / Fintek F81216AD (Co-lay)
Ethernet	2 x GbE ports(RJ45) with Intel I210 Controller 2 x USB 3.0 external stack ports
USB	1 x USB 2.0 via CN1 1 x USB 2.0 via CN2 2 x USB 2.0 via CN3 1 x USB 2.0 internal for mini PCIe
Serial	1 x RS-232/RS422/RS485 Selectable by BIOS (COM1), DB-9 Connector on I/O (with Auto flow control) 1 x RS-232 (COM2), DB-9 Connector on I/O 2 x UART (COM3/4) via CN3 (Header 2 x 30-Pin) 2 x RS-422/485 pin header (COM5/6) via CN2 (DF13A-30-Pin)
GPIO	2 x 8-bit GPIO (4 x DI, 4 x DO) via CN2/CN3
Storage	2 x SATA3 Connectors 1 x mSATA (Shared with mini PCIe)
Audio	Support Audio Via Realtek ALC662-VD 1 x Audio Phone Jack 1 x 2 x 6-Pin header, Line in/Line out/MIC in
Smart Battery	Support 3 Serial Li battery by 10-Pin header (BAT2)
Battery	1 x 2-Pin header support CR2477 (1000mAH)
Watchdog Timer	Watchdog timeout can be programmable by software support 1~255 sec

Dimension



Industrial Motherboard

Embedded Single Board

Core Module and Baseboard

Accessory

Assured Systems

Assured Systems is a leading technology company with over 1,500 regular clients in 80 countries, deploying over 85,000 systems to a diverse customer base in 12 years of business. We offer high-quality and innovative rugged computing, display, networking and data collection solutions to the embedded, industrial, and digital-out-of-home market sectors.

US

sales@assured-systems.com

Sales: +1 347 719 4508
Support: +1 347 719 4508

1309 Coffeen Ave
Ste 1200
Sheridan
WY 82801
USA

EMEA

sales@assured-systems.com

Sales: +44 (0)1785 879 050
Support: +44 (0)1785 879 050

Unit A5 Douglas Park
Stone Business Park
Stone
ST15 0YJ
United Kingdom

VAT Number: 120 9546 28
Business Registration Number: 07699660