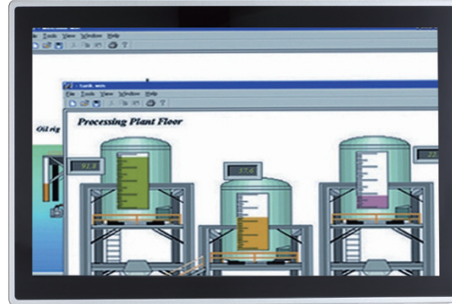


GOT315W-521 NEW

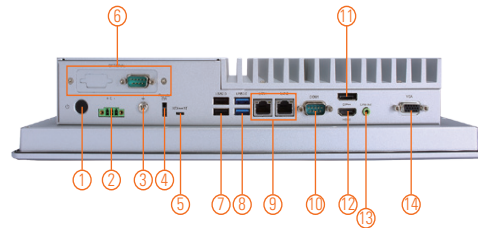
15.6" WXGA TFT Multi-touch Panel Computer with LGA1151 socket 9th/8th Gen Intel® Core™ i7/i5 & Pentium® Processor (Tj 100°C)

Features

- 15.6" WXGA projected capacitive multi-touch widescreen
- Fanless design with LGA1151 socket 9th/8th gen Intel®Core™ i7/i5 & Pentium® processor (Tj 100°C)
- Supports WLAN module & antenna (optional)
- 2.5" SATA HDD/SSD
- 2 LAN, 4 USB, 2 COM, 1 HDMI, 1 DP and 1 VGA
- IP65-rated aluminum front bezel
- Supports panel mount and VESA mount and wall mount



▲ Rear view



- | | | |
|---------------------------------|---|--------------------------------|
| 1. Power button | 6. Optional flexible I/O (default 1 x RS-232) | 10. 1 x COM for RS-232/422/485 |
| 2. Phoenix small type connector | 7. 2 x USB 2.0 | 11. 1 x DP |
| 3. Grounding hole | 8. 2 x USB 3.0 | 12. 1 x HDMI |
| 4. Remote power switch | 9. 2 x RJ-45 for Giga Ethernet | 13. 1 x Line-out |
| 5. AT/ATX switch | | 14. 1 x VGA |

Introduction

The GOT315W-521-PCT is a multi touch fanless type panel PC with 15.6-inch WXGA LCD and supports LGA1151 socket 9th/8th gen Intel® Core™ i7/i5 & Pentium® processor (Tj 100°C). It also provides M.2 Key E and mini-PCI Express slots for add-on devices such like Wi-Fi module for factory automation, and oil pipe monitoring system.

15.6-inch WXGA LCD with Projected Capacitive Multi-touch

The 15.6" WXGA touch panel PC supports 400 nits brightness, able to display contents in HD resolution. With projected capacitive multi-touch screen, users can operate the device more directly and friendly. The touch glass surface is up to 3H for anti scratch purpose.

Specifications

Front Bezel	IP65 front bezel		
LCD Panel	Display Type	15.6" WXGA TFT LCD	
	Brightness (cd/m ²)	400 nits	
	Resolution	1366 x 768	
Main System	CPU	LGA1151 socket 9th/8th gen Intel® Core™ i7/i5 & Pentium® processor (Tj 100°C) CPU max TDP is up to 35W	
	Chipset	Intel® H310	
	System Memory	1 x 260-pin DDR4-2666/2400 SO-DIMM, up to 32GB	
	BIOS	AMI UEFI BIOS	
	Storage	1 x mSATA	
		1 x 2.5" SATA HDD/SSD (7 mm and 9.5 mm, removable)	
	Watchdog Timer	255 levels, 0 to 255 sec.	
	Onboard Graphics	Intel® integrated Gfx graphic engine	

Specifications

I/O Connector	1 x 9-pin D-sub Male for RS-232 1 x COM for RS232/422/485 2 x RJ45 for Giga Ethernet 2 x USB 3.0, 2 x USB 2.0 1 x Phoenix type connector for DC power input 1 x Switch for power on/off (ATX) 1 x Line-out 1 x HDMI 1 x DP 1 x VGA 1 x Remote power switch 1 x AT/ATX switch (DC type only) 1 x Grounding hole (DC Version)
TPM	TPM 2.0
Expansion Interface	1 x Full-size PCI-Express Mini Card slot (PCIe + SATA + USB) 1 x M.2 Key E 2230 (for Wi-Fi)
Touchscreen	Projected capacitive multi-touch
Power Supply	+12V/+19V/+24VDC 1x terminal block
Power Consumption	70W
Dimensions	396.8 mm (15.6") (W) x 247.1 mm (9.73") (H) x 53 mm (2.08") (D)
Packing Dimensions	535 mm (21.06") (W) x 196 mm (7.71") (H) x 485 mm (19.09") (D)
Weight (net/gross)	6.5 kg(14.3 lb)/8.5kg(18.7 lb)
Operating Temperature	0°C to +50°C (+32°F to +122°F)
Relative Humidity	20% to 90% @ +40°C, non-condensing
Operation Vibration	1G, 10 - 500 Hz, random for 2.5" SATA HDD
Certifications	CE, EN 61000-6-2, EN 61000-6-4

Packing List

- 1 x GOT315WL-521
- 1 x Phoenix connector
- 1 x Panel mount kit set

Ordering Information

GOT315W-521-PCT-DC (P/N: E22B315105)	15.6" WXGA TFT fanless touch panel computer support LGA1151 socket 9th/8th gen Intel® Core™ i7/i5 & Pentium® processor (Tj 100°C), projected capacitive multi-touch screen and 24 VDC terminal block with small Phoenix connector
--------------------------------------	---

* Other configuration by request
* Specification and certifications may vary based on different requirements

Optional Accessories

4G LTE Kit	
Wi-Fi kit	
881231770A0E	Wall mount kit
50906D24000E	Adaptor 24V/120W, wire only, FSP120-AAAN3

Optional EOS Installation

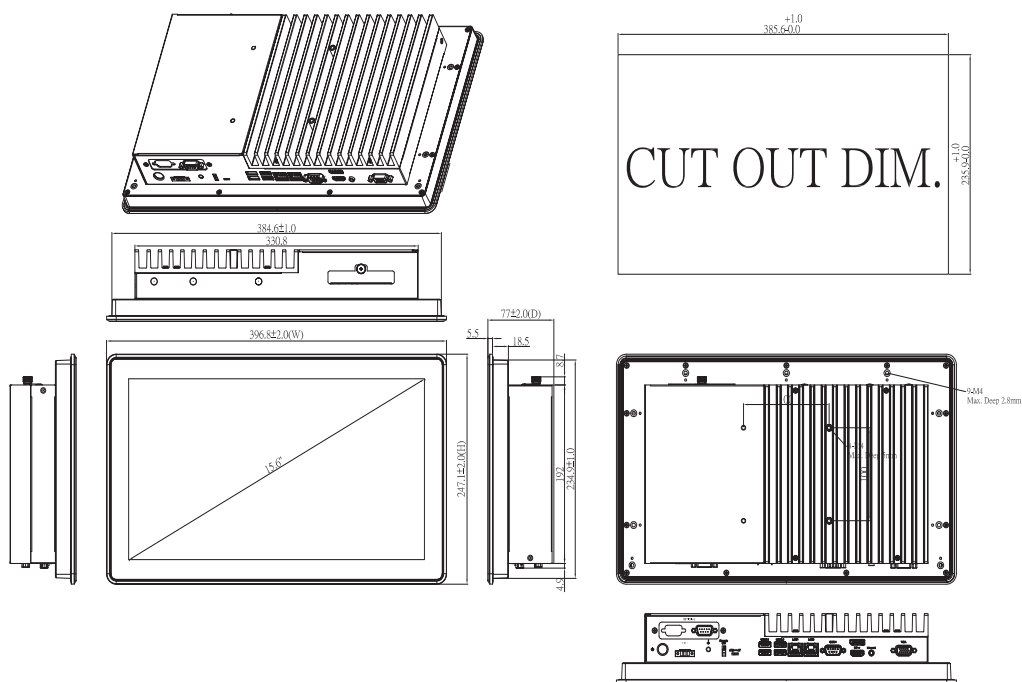
Windows® 10 IoT Enterprise

Optional OS Installation

Windows® 10



Dimensions



Assured Systems

Assured Systems is a leading technology company with over 1,500 regular clients in 80 countries, deploying over 85,000 systems to a diverse customer base in 12 years of business. We offer high-quality and innovative rugged computing, display, networking and data collection solutions to the embedded, industrial, and digital-out-of-home market sectors.

US

sales@assured-systems.com

Sales: +1 347 719 4508
Support: +1 347 719 4508

1309 Coffeen Ave
Ste 1200
Sheridan
WY 82801
USA

EMEA

sales@assured-systems.com

Sales: +44 (0)1785 879 050
Support: +44 (0)1785 879 050

Unit A5 Douglas Park
Stone Business Park
Stone
ST15 0YJ
United Kingdom

VAT Number: 120 9546 28
Business Registration Number: 07699660