



Industrial Solutions Partner!

SSF/SSH1505 V2

15" Resizing LCD, 1000 nits LED backlight, 1280x242 ultra wide aspect ratio 16:3

SSF/SSH1505 V2 is an innovative ultra-wide, sunlight readable, LED backlight LCD display. It provides LCD panel with specific ratios for digital signage, public transportation, exhibition hall, department store, vending machine and industrial applications. Incorporating with A.D. control board and backlight design, it is high brightness and sunlight readable panel, can display high-quality video with energy-efficient.

Key Features

- Resizing LCD
- Ultra Wide Screen (16 : 3)
- Sunlight Readable
- LED Backlight
- High Brightness 1000 nits
- Low Power Consumption
- High Uniformity (90%)
- Wide Dimming
- Life Expectancy (70,000hrs)
- Slim Bezel



Specifications

V1

Model No.	SSF/SSH 1505 V2
Description	15.0" Resizing LCD, 1000 nits LED backlight, 1280x242
Display Area	376.3 x 71.2 mm
Brightness	1,000 cd/m ²
Resolution	1280 x 242
Aspect Ratio	16 : 3
Contrast Ratio	1000:1
Pixel Pitch (mm)	0.294 x 0.294
Viewing Angle	+80°~-80°(H), +85°~-85°(V)
Display Colors	16.7M
Response Time (Typical)	5 ms
Sync	LVDS
Power Consumption	9 W / 12W
Dimensions (mm)	396 x 94.2 x 12.2
Weight (Net)	0.83 Kg
LED Driving Board	LID15A
Control Board (Optional)	AD2662GDMR
<input type="checkbox"/> AD2662GDMR	VGA +DVI +RS232
<input type="checkbox"/> Others	
F / R Control Button	<input type="checkbox"/> 5 Key <input type="checkbox"/> 4 Key
<input type="checkbox"/> 5 Key	Power Switch, Menu, Select (+,-), Auto
<input type="checkbox"/> 4 Key	Power Switch, Menu, Select (+,-),
OSD Menu	Brightness, Contrast, H/V Position, Color, Phase, Clock...
Optional	<input type="checkbox"/> AOT <input type="checkbox"/> Touch Screen

Specifications are subject to change without notice.
All brands or product names are trademarks or registered trademarks of their respective companies.

SSF= Panel+ LED Driving Board
SSH= Panel+ LED Driving Board + Control Board

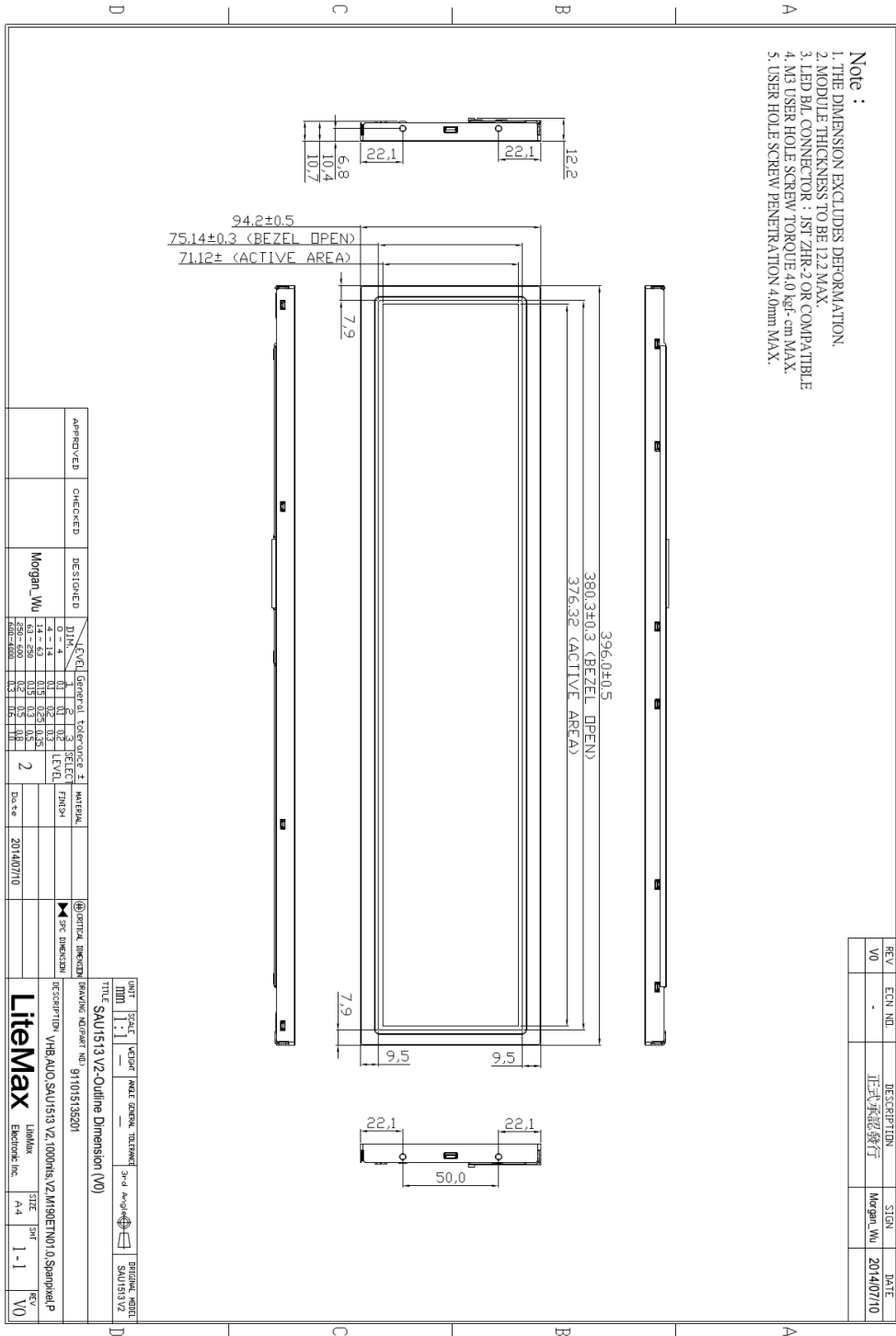


Industrial Solutions Partner!

Mechanical Drawing

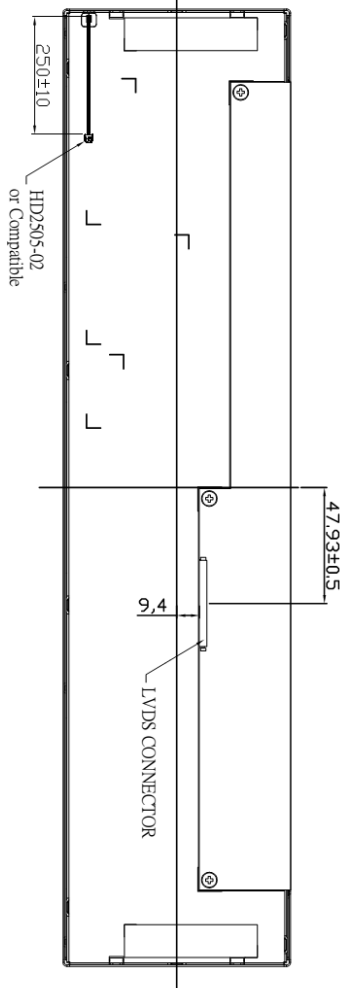
Outline Dimensions

Unit: mm





- Note :**
1. THE DIMENSION EXCLUDES DEFORMATION.
 2. MODULE THICKNESS TO BE 12.2 MAX.
 3. LED B/L CONNECTOR : 1ST ZHR-2 OR COMPATIBLE
 4. M3 USER HOLE SCREW TORQUE 4.0 kgf-cm MAX.
 5. USER HOLE SCREW PENETRATION 4.0mm MAX.



REV	EQV. NO.	DESCRIPTION	SIGN	DATE
V0	-	正式承認發行	Morgan_Wu	2014/07/10

APPROVED	CHECKED	DESIGNED	LEVEL	General	tolerance	±	MATERIAL
		Morgan_Wu	DIM. 1	1	0.1	0.1	
			2	2	0.2	0.3	
			3	3	0.25	0.25	
			4	4	0.15	0.15	
			5	5	0.2	0.2	
			6	6	0.2	0.2	
			7	7	0.2	0.2	
			8	8	0.2	0.2	
			9	9	0.2	0.2	
			10	10	0.2	0.2	
			11	11	0.2	0.2	
			12	12	0.2	0.2	
			13	13	0.2	0.2	
			14	14	0.2	0.2	
			15	15	0.2	0.2	
			16	16	0.2	0.2	
			17	17	0.2	0.2	
			18	18	0.2	0.2	
			19	19	0.2	0.2	
			20	20	0.2	0.2	
			21	21	0.2	0.2	
			22	22	0.2	0.2	
			23	23	0.2	0.2	
			24	24	0.2	0.2	
			25	25	0.2	0.2	
			26	26	0.2	0.2	
			27	27	0.2	0.2	
			28	28	0.2	0.2	
			29	29	0.2	0.2	
			30	30	0.2	0.2	
			31	31	0.2	0.2	
			32	32	0.2	0.2	
			33	33	0.2	0.2	
			34	34	0.2	0.2	
			35	35	0.2	0.2	
			36	36	0.2	0.2	
			37	37	0.2	0.2	
			38	38	0.2	0.2	
			39	39	0.2	0.2	
			40	40	0.2	0.2	
			41	41	0.2	0.2	
			42	42	0.2	0.2	
			43	43	0.2	0.2	
			44	44	0.2	0.2	
			45	45	0.2	0.2	
			46	46	0.2	0.2	
			47	47	0.2	0.2	
			48	48	0.2	0.2	
			49	49	0.2	0.2	
			50	50	0.2	0.2	
			51	51	0.2	0.2	
			52	52	0.2	0.2	
			53	53	0.2	0.2	
			54	54	0.2	0.2	
			55	55	0.2	0.2	
			56	56	0.2	0.2	
			57	57	0.2	0.2	
			58	58	0.2	0.2	
			59	59	0.2	0.2	
			60	60	0.2	0.2	
			61	61	0.2	0.2	
			62	62	0.2	0.2	
			63	63	0.2	0.2	
			64	64	0.2	0.2	
			65	65	0.2	0.2	
			66	66	0.2	0.2	
			67	67	0.2	0.2	
			68	68	0.2	0.2	
			69	69	0.2	0.2	
			70	70	0.2	0.2	
			71	71	0.2	0.2	
			72	72	0.2	0.2	
			73	73	0.2	0.2	
			74	74	0.2	0.2	
			75	75	0.2	0.2	
			76	76	0.2	0.2	
			77	77	0.2	0.2	
			78	78	0.2	0.2	
			79	79	0.2	0.2	
			80	80	0.2	0.2	
			81	81	0.2	0.2	
			82	82	0.2	0.2	
			83	83	0.2	0.2	
			84	84	0.2	0.2	
			85	85	0.2	0.2	
			86	86	0.2	0.2	
			87	87	0.2	0.2	
			88	88	0.2	0.2	
			89	89	0.2	0.2	
			90	90	0.2	0.2	
			91	91	0.2	0.2	
			92	92	0.2	0.2	
			93	93	0.2	0.2	
			94	94	0.2	0.2	
			95	95	0.2	0.2	
			96	96	0.2	0.2	
			97	97	0.2	0.2	
			98	98	0.2	0.2	
			99	99	0.2	0.2	
			100	100	0.2	0.2	

UNIT	SCALE	VECT	ANGLE	GENERAL	TOLERANCE	3rd	ANGLE	ORIGINAL	MODEL
MM	1:1								SAU1513V2
TITLE SAU1513 V2-Outline Dimension (V0)									
DRAWING NUMBER NO. 911015155201									
DESCRIPTION VHB-AUO,SAU1513 V2,1000HIS,V2,M190ETN01,0,Spanpak,P									
LITEMAX									
LITEMAX									
ELECTRONIC INC.									
SIZE A4									
SHEET 1-1									
REV. V0									



Industrial Solutions Partner!

Ordering Information

Model Name	Description
SSF1505-ENN-A11	15",1000ints,1280*242,LID15.AD2662GDMR,O/B,DC 12V,V02
SSH1505-ENN-G11	15",1000nits,1280*242,LID15.AD2662GDM,DC12V,V02
SSH1505-ENN-G12	15",1000nits,1280*242,LID15.AD2662GHM,DC12V,V02

Optional Accessories

Part Number	Description
840612051210	ADAPTER,AC/DC,12V/5.4A,65W,Atech OEM A065112-TDx.4P SLIDING CAP,P
810618301010 (Optional)	CABLE.POWER.AC.1830mm.(US Type).3PIN PLUG TO SOCKET.SVT(SPT-2)18AWG 3C BLACK,P
810618301090 (Optional)	CABLE,POWER,AC,1830mm.(EU Type) 3PIN PLUG TO.SOCKET,H05VV-F 3G.0.75MMSQ BLACK,P
810618301050 (Optional)	CABLE,POWER,AC,1830mm.UK(FUSE) 3PIN PLUG TO.SOCKET,H05VV-F 3C(3G) 0.75MMSQ BLACK,P
810618301170 (Optional)	CABLE.POWER,AC,1830mm(AU Type)3PIN PLUG TO 2P SOCKET.LTSA 0.75MMSQ BLACK,P
810618301030 (Optional)	CABLE.POWER.AC.1830mm.(JP Type).2PIN PLUG Y TERMINAL TO. SOCKET.VCTF 3C 0.75MMSQ BLACK,P

Assured Systems

Assured Systems is a leading technology company with over 1,500 regular clients in 80 countries, deploying over 85,000 systems to a diverse customer base in 12 years of business. We offer high-quality and innovative rugged computing, display, networking and data collection solutions to the embedded, industrial, and digital-out-of-home market sectors.

US

sales@assured-systems.com

Sales: +1 347 719 4508
Support: +1 347 719 4508

1309 Coffeen Ave
Ste 1200
Sheridan
WY 82801
USA

EMEA

sales@assured-systems.com

Sales: +44 (0)1785 879 050
Support: +44 (0)1785 879 050

Unit A5 Douglas Park
Stone Business Park
Stone
ST15 0YJ
United Kingdom

VAT Number: 120 9546 28
Business Registration Number: 07699660