

# Devolinx STE-501C/502C

1/2-Port Ethernet Serial Server

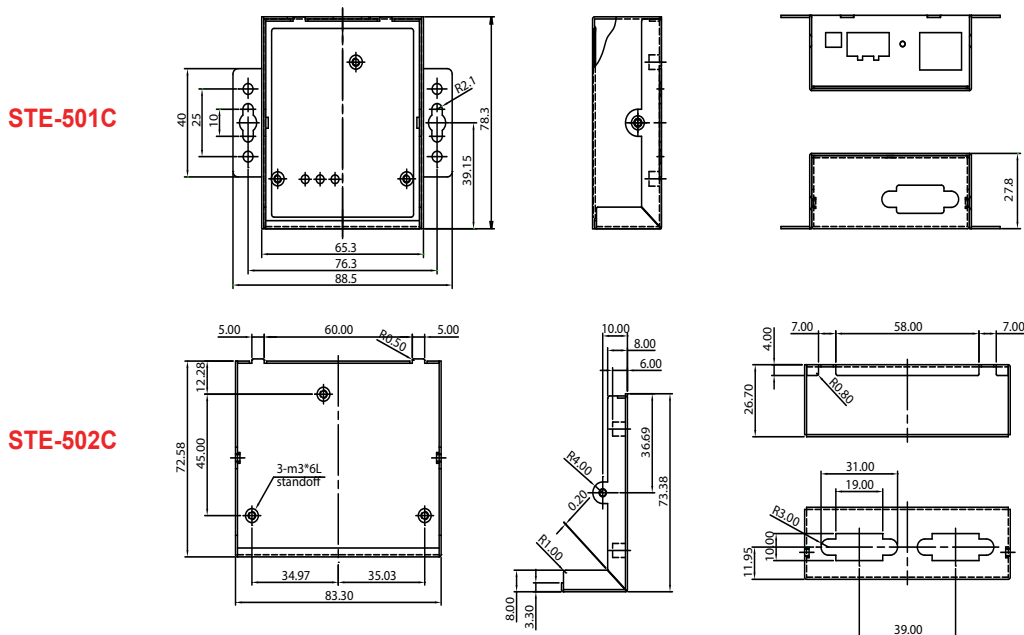


## Features

- ▶ Rugged Metal Case with DIN-Rail / Wall-Mount
- ▶ 15 KV ESD Protection for Serial Signals
- ▶ 10/100Mbps Fast Ethernet Full Duplex Auto Negotiation
- ▶ Supports Multiple Link Mode with TCP Server/Client, UDP, and Virtual COM Mode
- ▶ Monitor, Manage, and Control Industrial Field Devices Remotely
- ▶ Configurable via Built-In Web Server, Serial Console, or Telnet
- ▶ Windows Base Utility for IP Configuration
- ▶ Compact Size
- ▶ Upgradeable Firmware from Remote-PC via Ethernet



## ▶ Layout / Dimensions (unit = mm)



**► Specifications**

**CPU**  
16-bit Embedded CPU

**Flash Memory**  
512 KBytes

**SDRAM**  
512 KBytes

**EEPROM**  
512 Bytes

**Network Interface**  
10/100Mbps Fast Ethernet

**Network Protocol**  
TCP/IP, UDP, HTTP, SNMP, ARP, Telnet, ICMP, BOOTP, DHCP

**Reset**  
Built-In Reset Key to Restore Defaults

**Serial Interface**  
RS-232/422/485

**Serial Connector**  
DB9 Male

**Serial Communication**  
Data Rate: 1200 ~ 230400 bps (230Kbps)  
Characters: 7 or 8 Data Bits  
Parity: None, Even, Odd, Mark, Space  
Stop Bits: 1 or 2  
Flow Control: Xon/Xoff, RTS/CTS

**LED Indicators**  
LAN, RUN, and COM

**Software**  
Windows OS Based Configuration Utility, Virtual COM Software

**Configuration**  
Web (HTML), Telnet, Serial Console, and Configuration Utility

**Power Requirement**  
9 ~ 30VDC

**Power Consumption**  
3 Watts

**Operation Temperature**  
0° C to 60° C (32° F to 140° F)

**Storage Temperature**  
-20° C to 85° C (-4° F to 185° F)

**Operation Humidity**  
20% to 90% (Non-condensing)

**Dimension (W x H x D)**  
STE-501C: 65 x 80 x 28 mm (2.56 x 3.15 x 1.10 in.)  
STE-502C: 85 x 75 x 28 mm (3.35 x 2.95 x 1.10 in.)

**Approvals**  
FCC, CE

**Warranty**  
5-Year Warranty

**► Comparison**

Model	STE-501C	STE-502C	STE-601C	STW-601C
Number of Ports	1 Port	2 Ports	1 Port	1 Port
Case Design	Commercial	Commercial	Industrial	Industrial
Flash Memory	512KB	512KB	512KB	10MB (2MB for Bootloader)
SDRAM	512KB	512KB	512KB	32MB
Wireless LAN	No	No	No	Yes
Serial Connector	DB9 Male	DB9 Male	DB9 Male 5 Pin Terminal Block 8 Pin Mini-DIN	DB9 Male 5 Pin Terminal Block 8 Pin Mini-DIN

**► Ordering Information**

**STE-501C** 1 Port Ethernet Serial Server, RS-232 / 422 / 485, DIN-Rail/Wall-Mountable  
**STE-502C** 2 Port Ethernet Serial Server, RS-232 / 422 / 485, DIN-Rail/Wall-Mountable

\*\*\* POWER ADAPTER SOLD SEPARATELY \*\*\*

**Optional Accessories**

**PA-STX-US** Power Adapter for STE-501C (USA)  
**PA-STE502-US** Power Adapter for STE-502C (USA)  
**PA-STX-EU** Power Adapter for STE-501C (Euro)  
**PA-STE502-EU** Power Adapter for STE-502C (Euro)  
**DIN-RAIL-KIT** DIN Rail Mounting Kit

**Aaxeon Technologies**

445 Capricorn St.  
Brea, CA 92821  
USA

Toll-Free: (877) AAXEON5 (229-3665)  
Phone: (714) 671-9000  
FAX: (714) 671-9944  
e-Mail: info@aaxeon.com

**aaxeon**  
www.aaxeon.com

## Assured Systems

Assured Systems is a leading technology company with over 1,500 regular clients in 80 countries, deploying over 85,000 systems to a diverse customer base in 12 years of business. We offer high-quality and innovative rugged computing, display, networking and data collection solutions to the embedded, industrial, and digital-out-of-home market sectors.

### US

[sales@assured-systems.com](mailto:sales@assured-systems.com)

Sales: +1 347 719 4508  
Support: +1 347 719 4508

1309 Coffeen Ave  
Ste 1200  
Sheridan  
WY 82801  
USA

### EMEA

[sales@assured-systems.com](mailto:sales@assured-systems.com)

Sales: +44 (0)1785 879 050  
Support: +44 (0)1785 879 050

Unit A5 Douglas Park  
Stone Business Park  
Stone  
ST15 0YJ  
United Kingdom

VAT Number: 120 9546 28  
Business Registration Number: 07699660