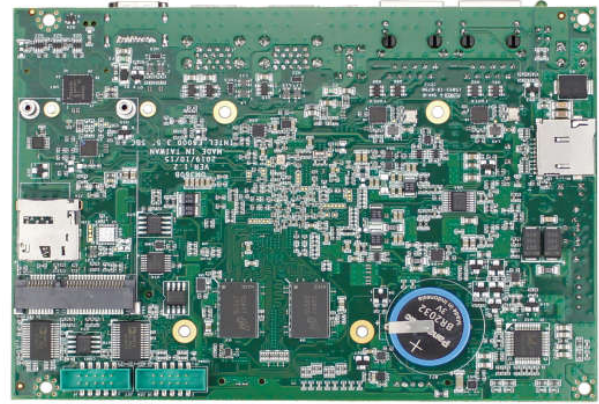
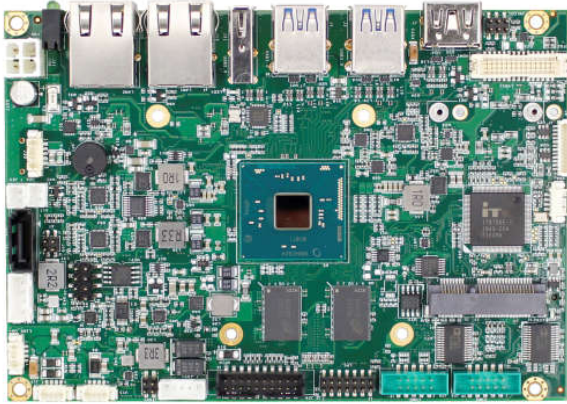


IBW-35-E4



Specifications

Processor	Intel® Atom™ x5-E8000	2.00GHz(Burst)	1.04GHz Quad Core
	Intel® Pentium® N3710	2.56GHz(Burst)	1.6GHz Quad Core (Option)
	Intel® Celeron® N3160	2.24GHz(Burst)	1.6GHz Quad Core (Option)
System Memory	4GB DDR3L 1600 onboard		
BIOS	UEFI BIOS		
Expansion Bus	MiniPCIe (full-size) x1	SIM Card x1	
Display	Hardware decoding: H.265, MPEG2, MVC, VC-1, VP8, WMV9, and JPEG/MJPEG formats Hardware encoding: H.264, MVC, and JPEG/MJPEG formats VGA: resolution up to 1920 x 1200 @ 60Hz HDMI: resolution up to 2560 x 1600 @ 60Hz, 24bpp LVDS: resolution up to 1920 x 1200 @ 60Hz, in dual LVDS bus mode		
LAN	RTL8111H GbE x2		
HD Audio	Realtek ALC262 VD		
Disk Support	Micro SD	SATA device	mSATA device
I/O Interface	COM x4 (2x RS232/422/485) I ² C x1	USB 3.0 x4 16-bit GPIO x1	USB 2.0 x2
Connectors	7-pin SATA connector for SATA DOM x1 2.0mm 20-pin box header for GPIO x1 2.0mm 2-pin wafer for Power button x1 1.25mm 4-pin wafer for I2C x1 HDMI connector x1 USB 3.0 connector x4	4.2mm 4-pin wafer for Power x1 1.0mm 12-pin wafer for VGA x1 2.0mm 2-pin wafer for Rest button x1 1.25mm 30-pin wafer for LVDS x1 Mini PCIe slot x2 USB2.0 connector x2	2.5mm 4-pin wafer for SATA HDD Power x1 2.0mm 10-pin box header for COM x4 1.25mm 4-pin wafer for Line-in/Line-out/MIC-in x3 SIM card holder x1 RJ45 connector x2
Power Requirement	12V standard input from internal 4-pin power connector support for ATX mode		
Operating Temperature	0°C to +50°C (with airflow)		
Dimension	102 x 146mm		
Weight	120g		
O/S Support	Windows 10	Windows 7 (64bits)	Linux

Ordering Information

PART NO.	CPU (GHz)	DRAM (DDR3L)	Disk Support	Display	Expansion Bus	LAN	COM	USB 3.0	USB 2.0	I ² C	16-bit GPIO	Audio
IBW-35-E4	(Intel® Atom™ x5-E8000) 1.04GHz		mSATA	VGA	MiniPCIe							Line-in
IBW-35-A4	(Intel® Pentium® N3710) 1.60GHz	4GB	SATA Deive	LVDS	SIM Card	2	4	4	2	1	1	Line-out
IBW-35-B4	(Intel® Celeron® N3160) 1.60GHz		Micro SD	HDMI								MIC-in
CABLE-SET IBW35	Cable set for IBW-35 (RS232 x4, GPIO x1, Audio x3)											

Assured Systems

Assured Systems is a leading technology company with over 1,500 regular clients in 80 countries, deploying over 85,000 systems to a diverse customer base in 12 years of business. We offer high-quality and innovative rugged computing, display, networking and data collection solutions to the embedded, industrial, and digital-out-of-home market sectors.

US

sales@assured-systems.com

Sales: +1 347 719 4508
Support: +1 347 719 4508

1309 Coffeen Ave
Ste 1200
Sheridan
WY 82801
USA

EMEA

sales@assured-systems.com

Sales: +44 (0)1785 879 050
Support: +44 (0)1785 879 050

Unit A5 Douglas Park
Stone Business Park
Stone
ST15 0YJ
United Kingdom

VAT Number: 120 9546 28
Business Registration Number: 07699660