



ENTERPRISE-CLASS  
CELLULAR ROUTERS  
FOR RAIL



Manage this device with  
Digi Remote Manager

# DIGI TRANSPORT WR44 RR

Rugged, all-in-one cellular router with 3G/4G GPS designed for use on-board rail vehicles

Digi TransPort® WR44 RR is a rugged enterprise-class cellular router designed for rail environments. Its rail industry ratings, versatility, security features and performance make it ideal for applications such as Positive Train Control (PTC), wayside device communications and on-board passenger Internet access.

Digi TransPort WR44 RR provides a reliable primary high-speed cellular network connection or can act as a secure backup connection to the existing railroad network. It features a flexible communications design with 3G/4G multicarrier cellular, plus integrated Wi-Fi ac/b/g/n; a/n access point, serial and 4-port Ethernet switch. It also

features full on-board train certifications, including AAR S-9401 and EN50155. Communications interfaces include hardened connectors, including M12 for Ethernet and serial, as well as TNC connectors for antenna connections.

Gain critical insights into your deployed devices and manage your network with Digi Remote Manager® (Digi RM) — the command center for your deployment. Digi RM is a cloud-based solution that facilitates easy setup, mass configuration, maintenance and support for hundreds or even thousands of remote devices. Digi RM lets you evaluate, update and configure your Digi enterprise products — and the health of your network — at scale after deployment.

## BENEFITS

- Heavy-duty enclosure and connectors designed for shock and high vibration environments
- Enterprise-class routing, VPN and firewall capabilities
- Optional integrated 802.11 ac/b/g/n; a/n Wi-Fi access point
- Dual SIM for carrier redundancy
- Cellular to Wi-Fi autoswitch
- Full on-board train certs including AAR S-9401 and EN50155
- Digi Remote Manager® platform for easy setup, mass configuration and management

## RELATED PRODUCTS



Digi TransPort®  
WR11 XT



Digi TransPort®  
WR21



Digi TransPort®  
WR44 R

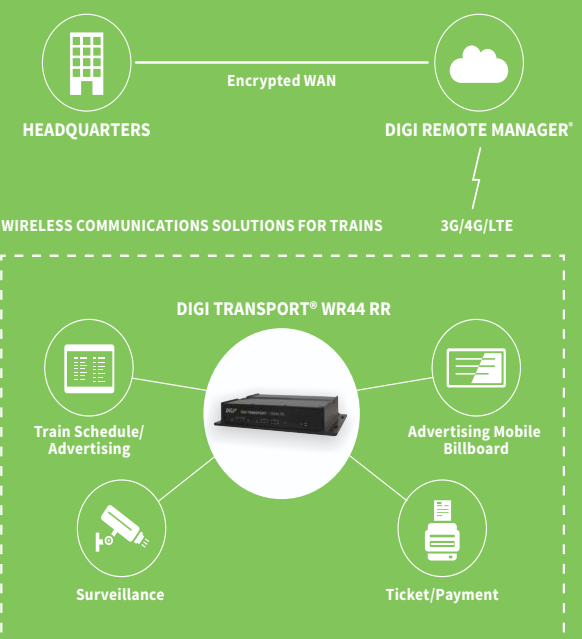


Accessories



Digi Remote  
Manager®

## APPLICATION EXAMPLE



**SPECIFICATIONS**
**Digi TransPort® WR44 RR**
**WIRELESS INTERFACES**
**CELLULAR\***

|                                      |  |
|--------------------------------------|--|
| <b>LTE - NORTH AMERICA/EMEA (M8)</b> | LTE Advanced Cat 6: 700(B12,B13,B29)/800(B20,B26)/850(B5)/900(B8)/AWS(B4)/1800(B3)/1900(B2,B25)/2100(B1)/2300(B30)/2500(B41)/2600(B7)<br>3G HSPA+: 850/900/AWS/1800/1900/2100 MHz<br>Transfer rate (max): 300 Mbps down, 50 Mbps up<br>Approvals: PTCRB, AT&T, Verizon, Vodafone (pending) |
| <b>LTE - ANZ/LATAM (L9)</b>          | LTE-Advanced Cat 6: 700(B28)/850(B5,B18,B19)/900(B8)/1500(B21)/1800(B3)/1900(B39)/2100(B1)/2600(B7,B38)/2300(B40)/2500(B41)<br>3G HSPA+: 800/850/900/1700/2100 MHz<br>Transfer rate (max): 300 Mbps down, 50 Mbps up   |
| <b>CONNECTOR</b>                     | (2) 50 Ω TNC (Center pin: female)  |
| <b>SIM SLOTS</b>                     | (2) Mini-SIM (2FF)   |
| <b>SIM SECURITY</b>                  | SIM slot cover plate   |

**WI-FI\*\***

|                            |  |
|----------------------------|--|
| <b>STANDARD</b>            | 802.11 ac/a/b/g/n 2.4/5 GHz  |
| <b>MODES</b>               | Access point, client and support for multiple SSID   |
| <b>TRANSMIT POWER</b>      | 16 – 22 dBm, +/- 2 dB  |
| <b>RECEIVE SENSITIVITY</b> | 71 – 93 dBm, +/- 2dB   |
| <b>SECURITY</b>            | Open or shared key authentication; WEP (64- and 128-bit) encryption; WPA/WPA2 with RADIUS (WPA enterprise and pre-shared keys) |
| <b>CONNECTORS</b>          | (2) 50 Ω RP-TNC (center pin: male)   |

**GPS\*\***

|                            |  |
|----------------------------|--|
| <b>CHANNELS</b>            | 50   |
| <b>SENSITIVITY</b>         | -163 dB  |
| <b>PROTOCOL</b>            | NMEA 0183 V2.3 sentence output; +3.3 VDC active antenna drive; NMEA stream to local serial port or over TCP/IP                                 |
| <b>NAVIGATION</b>          | Galileo ready  |
| <b>AUGMENTATION</b>        | SBAS   |
| <b>COLD START</b>          | < 27 seconds TTFF (90%)  |
| <b>HORIZONTAL ACCURACY</b> | < 2.5 meters (90%)   |
| <b>VELOCITY ACCURACY</b>   | 0.1m/s   |
| <b>CONNECTOR</b>           | (1) 50 Ω RP-TNC (center pin: male)   |
| <b>ADDITIONAL FEATURES</b> | Send GPS via UDP/IP, TCP/IP (up to two destinations) or serial; customize and/or send data using Python; GPS status query; time source capable |

**WIRED INTERFACES**
**SERIAL**

|                       |   |
|-----------------------|---|
| <b>PORTS</b>          | (1) 5-pin A-coded M12 female; DCE       |
| <b>STANDARD</b>       | RS-232                                  |
| <b>SIGNAL SUPPORT</b> | TXD, RXD, RTS, CTS, GND                 |
| <b>FLOW CONTROL</b>   | Software (XON/XOFF), hardware supported |

**ETHERNET**

|                  |  |
|------------------|--|
| <b>PORTS</b>     | (4) 10/100 Mbps (auto-sensing)                                 |
| <b>CONNECTOR</b> | Option of 4-pin D-coded M12 female or 8-pin A-coded M12 female |

**I/O**

|                    |  |
|--------------------|--|
| <b>DIGITAL I/O</b> | Input: 4 - 28 VDC; Output: 28 VDC 50 mA max  |
| <b>CONNECTOR</b>   | 4-pin A-coded M12 male (2 pins are used for I/O; the other 2 pins are used for DC power) |

\* Transfer rates are network operator dependent.

\*\* Optional hardware.

| SPECIFICATIONS                       | Digi TransPort® WR44 RR   |
|--------------------------------------|---|
| <b>MANAGEMENT</b>                    |   |
| REMOTE MANAGEMENT                    | Digi Remote Manager* (cloud based); SNMP v1/v2c/v3 (user installed/managed)                             |
| LOCAL MANAGEMENT                     | Web interface (HTTP/HTTPS); CLI (Telnet, SSH, SMS, serial port)   |
| MANAGEMENT/<br>TROUBLESHOOTING TOOLS | FTP, SFTP, SCP, protocol analyzer with PCAP for Wireshark, event logging with Syslog and SMTP, NTP/SNTP |
| MEMORY                               | 128 MB NAND Flash/64 MB DDR2 SDRAM  |
| <b>POWER</b>                         |   |
| INPUT                                | 9 – 36 VDC  |
| CONSUMPTION                          | 15 W max, 8.5 W typical   |
| CONNECTOR                            | 4-pin A-coded M12 male (2 pins are used for power; the other 2 pins are used for I/O)                   |
| DC POWER CORD**                      | 4-pin A-coded M12 female to bare wire   |
| <b>PHYSICAL</b>                      |   |
| DIMENSIONS (L X W X H)               | 29.2 cm x 16.9 cm x 5.2 cm (11.5 in x 6.65 in x 2.05 in)  |
| WEIGHT                               | 2.6 kg (5.7 lbs)  |
| STATUS LEDS                          | Power, LAN, Wi-Fi, serial, WWAN (link, act, SIM), signal strength                                       |
| MATERIAL/RATING***                   | Aluminium alloy/ IP54   |
| MOUNTING                             | (4) mounting slots on the unit's flange   |
| <b>ENVIRONMENTAL</b>                 |   |
| OPERATING TEMPERATURE                | -40° C to 70° C (-40° F to 158° F); (reduced cellular performance may occur above 60° C/140° F)         |
| STORAGE TEMPERATURE                  | -40° C to 85° C (-40° F to 185° F)  |
| RELATIVE HUMIDITY                    | 0% to 95% (non-condensing) @ 25° C (77° F)  |
| ETHERNET ISOLATION                   | 2 kV RMS  |
| SERIAL PORT PROTECTION (ESD)         | 10 kV   |
| CONFORMAL COATING                    | Available upon request  |
| <b>APPROVALS</b>                     |   |
| CELLULAR                             | PTCRB, NAPRD.03, GCF-CC, R&TTE, EN 301 511  |
| SAFETY                               | UL 60950, CSA 22.2 No. 60950, EN60950   |
| EMISSIONS/IMMUNITY                   | CE, FCC Part 15 Class B, AS/NZS CISPR 22, EN55024, EN55022 Class B                                      |
| INDUSTRY                             | EN50155, EN45545-2 (all variants); AAR S-9401 (select variants)   |
| <b>WARRANTY</b>                      |   |
| PRODUCT WARRANTY                     | 3-year****  |

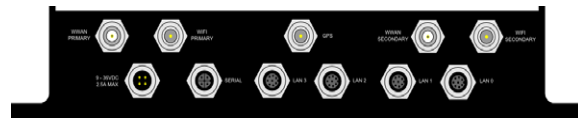
\*\*Optional hardware.

\*\*\*The enclosure rating is self-declared and has not been formally verified by an independent lab.

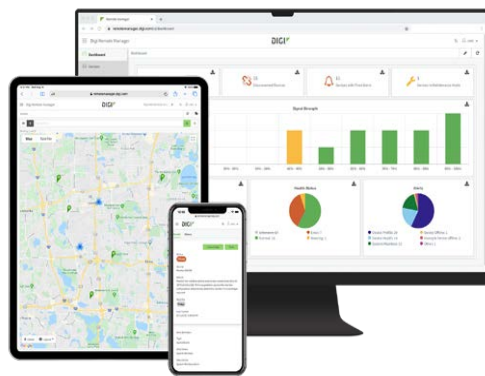
\*\*\*\*Standard 3-year warranty upgradeable to 5 years with purchase of a Digi Remote Manager Premier 5-year subscription applicable to the product purchased only at the time of product purchase and with product registration at that time in Digi Remote Manager.

| ENTERPRISE SOFTWARE | DESCRIPTION   |
|---------------------|---|
| PROTOCOLS           | HTTP, HTTPS, FTP, SFTP, SSL, SMTP, SNMP (v1/v2c/v3), SSH, Telnet and CLI for web management; Remote management via Digi Remote Manager; SMS management, protocol analyzer, ability to capture PCAP for use with Wireshark; DynDNS, Dynamic DNS client compatible with BIND9/No-IP/DynDNS  |
| SECURITY/VPN        | IP filtering, Stateful inspection firewall with scripting, address and port translation; VPN: IPsec with IKEv1, IKEv2, NAT Traversal; SSL, SSLv2, FIPS 197, Open VPN client and server; PPTP, L2TP; (5) VPN tunnels (upgradable to a maximum of 200); Cryptology: SHA-1, MD5, RSA; Encryption: DES, 3DES and AES up to 256-bit (CBC mode for IPsec); Authentication: RADIUS, TACACS+, SCEP for X.509 certificates; Content filtering (via 3rd party); MAC address filtering; VLAN support |
| ROUTING/FAILOVER    | IP pass-through; NAT, NATP with IP port forwarding; Ethernet bridging; GRE; Multicast routing; Routing protocols: PPP, PPPoE, RIP (v1, v2) OSPF, SRI, BGP, iGMP routing (multicast); RSTP (Rapid Spanning Tree Protocol); IP failover: VRRP, VRRP+TM; Automatic failover/ failback to second GSM network/standby APN  |
| OTHER PROTOCOLS     | DHCP; Dynamic DNS client compatible with BIND9/No-IP/DynDNS; QoS via TOS/DSCP/WRED; Modbus UDP/TCP to serial; X.25 including XOT, SNA/IP, TPAD and PAD; Protocol switch; Modbus bridging for connecting diverse field assets  |

## PRODUCT IMAGES



## DIGI REMOTE MANAGER®



Digi Remote Manager is the technology platform that brings networks to the next level, allowing networks — and the people who manage them — to work smarter. With Digi Remote Manager you can transform a multitude of dispersed IoT devices into a dynamic, intelligent network. Now you can easily deploy, monitor and diagnose thousands of mission-critical devices from a single point of command — on your desktop, tablet or phone. All the while, its software-defined security diligently safeguards your entire Digi ecosystem.

Learn more at [www.digi.com/digi-remote-manager](http://www.digi.com/digi-remote-manager)

### CAPABILITIES

- Activate, monitor and diagnose your mission-critical devices from a single point of command and control — on your desktop or mobile app
- Schedule key operations — including firmware updates and file management — on a single device or on a group of devices, keeping your network functionality up-to-date and maintaining compliance standards
- Manage edge devices out-of-band via console terminal access
- Keep tabs on device health and connectivity across device deployments of any size
- Create detailed reports and enable real-time alerts for specified conditions
- Integrate device data through open APIs to gain deeper insights and control with third-party applications
- Report and alert on performance statistics, including connection history, signal quality, latency, data usage and packet loss

### INFRASTRUCTURE

- Hosted in a commercial-grade cloud server environment that meets SOC 1®, SOC 2® and SOC 3® standards
- Superior availability, operating to 99.9% or greater
- Open APIs available to support application development

### SECURITY

- More than 175 security controls in place to protect your data
- Member of the Center for Internet Security® (CIS®)
- Enables compliance with security frameworks like ISO27002, HIPAA, NIST and more
- Earned Skyhigh's CloudTrust™ Program highest rating of Enterprise-Ready

| PART NUMBERS     | DIGI TRANSPORT® WR44 RR  |
|------------------|--|
| WR44-M8G4-AE1-MD | Digi TransPort WR44 RR - 4G LTE North America/EMEA, Wi-Fi (802.11ac) |
| WR44-L9G4-AE1-MD | Digi TransPort WR44 RR - 4G LTE LATAM/ANZ, Wi-Fi (802.11ac)          |

| PART NUMBERS | ACCESSORIES*                           |
|--------------|--|
| 76000983     | Accessory kit - Digi TransPort WR44 RR |

\*Sold separately, unless otherwise noted.

| PART NUMBERS    | DIGI REMOTE MANAGER®                               |
|-----------------|--|
| DIGI-RM-STD-1YR | Digi Remote Manager Standard - 1-year subscription |
| DIGI-RM-PRM-1YR | Digi Remote Manager Premier - 1-year subscription  |
| DIGI-RM-PRM-3YR | Digi Remote Manager Premier - 3-year subscription  |
| DIGI-RM-PRM-5YR | Digi Remote Manager Premier - 5-year subscription  |

FOR MORE INFORMATION  
PLEASE VISIT [DIGI.COM](https://www.digi.com)

**DIGI SERVICE AND SUPPORT** / You can purchase with confidence knowing that Digi is always available to serve you with expert technical support and our industry leading warranty. For detailed information visit [www.digi.com/support](https://www.digi.com/support).

© 1996-2020 Digi International Inc. All rights reserved.  
All trademarks are the property of their respective owners.

91002236  
F1/920

**DIGI INTERNATIONAL WORLDWIDE HQ**  
877-912-3444 / 952-912-3444 / [www.digi.com](https://www.digi.com)

**DIGI INTERNATIONAL GERMANY**  
+49-89-540-428-0

**DIGI INTERNATIONAL JAPAN**  
+81-3-5428-0261 / [www.digi-intl.co.jp](https://www.digi-intl.co.jp)

**DIGI INTERNATIONAL SINGAPORE**  
+65-6213-5380

**DIGI INTERNATIONAL CHINA**  
+86-21-50492199 / [www.digi.com.cn](https://www.digi.com.cn)



## Assured Systems

Assured Systems is a leading technology company with over 1,500 regular clients in 80 countries, deploying over 85,000 systems to a diverse customer base in 12 years of business. We offer high-quality and innovative rugged computing, display, networking and data collection solutions to the embedded, industrial, and digital-out-of-home market sectors.

### US

[sales@assured-systems.com](mailto:sales@assured-systems.com)

Sales: +1 347 719 4508

Support: +1 347 719 4508

1309 Coffeen Ave  
Ste 1200  
Sheridan  
WY 82801  
USA

### EMEA

[sales@assured-systems.com](mailto:sales@assured-systems.com)

Sales: +44 (0)1785 879 050

Support: +44 (0)1785 879 050

Unit A5 Douglas Park  
Stone Business Park  
Stone  
ST15 0YJ  
United Kingdom

VAT Number: 120 9546 28

Business Registration Number: 07699660