

# ED700-EHL/ED700-EHL221 Intel® Atom® Processors X Series Fanless Embedded System



Photo for ED700-EHL221



## KEY FEATURES



### 5G Connectivity

Support 5G Sub-6 module



### WiFi 6 Connectivity

Support WiFi 6 module



### 2.5GbE TSN

Support 1 x 2.5GbE TSN , 3 x GbE LAN



### Wide Operating Temperature

Support up to -40 ~ 60°C  
(Intel® Embedded Series)

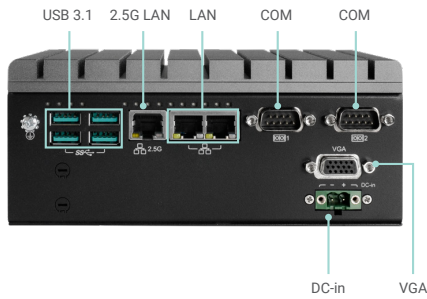


### Isolated COM & DIO

Support isolated COM & DIO



## PANEL: ED700-EHL

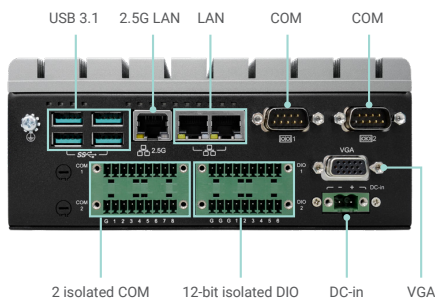


Front View

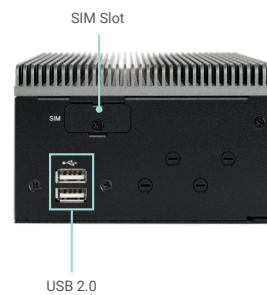


Top View

## PANEL: ED700-EHL221

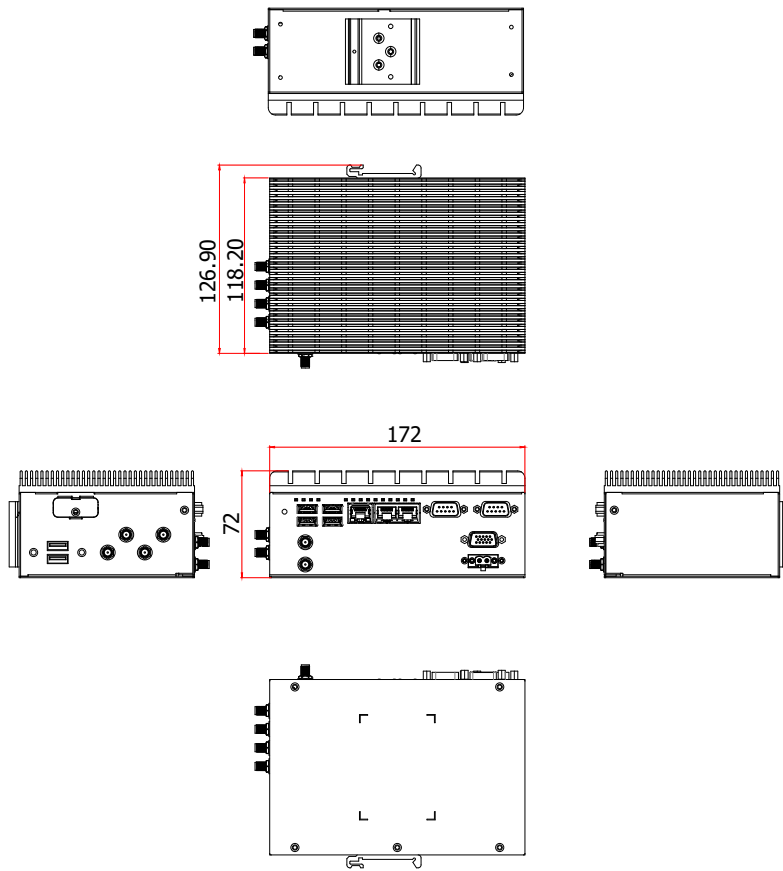


Front View

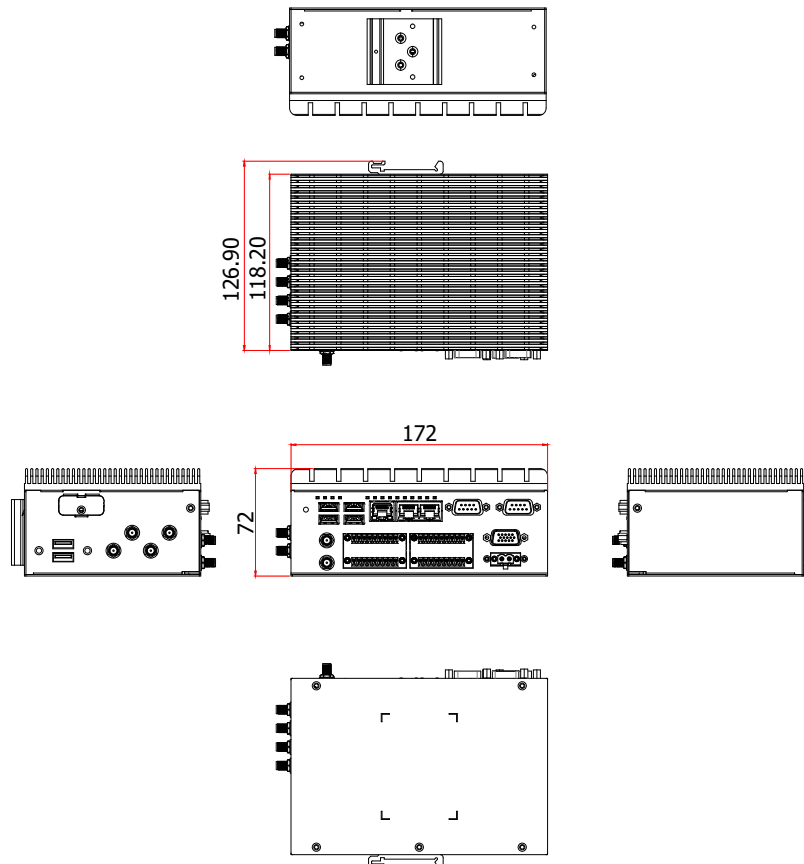


Top View

**DIMENSIONS: ED700-EHL**



**DIMENSIONS: ED700-EHL22I**



## SPECIFICATION

SYSTEM	Processor	Intel® Atom® Processors X Series, BGA 1493 Intel PC Client Series Intel® Celeron® J6412 4 cores, 2.0 to 2.6 GHz, TDP 10W Intel® Celeron® J6413 4 cores, 1.8 to 3.0 GHz, TDP 10W Intel® Embedded Series Intel® Atom® x6211E 2 cores, 1.3 to 3.0 GHz, TDP 6.5W Intel® Atom® x6413E 4 cores, 1.5 to 3.0 GHz, TDP 9W Intel® Atom® x6425E 4 cores, 2.0 to 3.0 GHz, TDP 12W Intel® Atom® x6425RE 4 cores, 1.9 GHz, TDP 12W
	Memory	4GB/8GB DDR4 Memory onboard Total Memory up to 32GB One 260 pin DDR4 SODIMM up to 3200MHz (in-band ECC support in embedded/industrial SKU)
	BIOS	AMI SPI 256Mbit (supports UEFI boot only)
GRAPHICS	Controller	Intel® UHD Graphics for 10th Gen Intel® Processors
	Feature	OpenGL 4.5, DirectX 12, Open CL 1.2, Vulkan 1.1 HW Decode: AVC/H.264, MPEG2, VC1/WMV9, JPEG/MJPEG, HEVC/H.265, VP8, VP9 HW Encode: AVC/H.264, JPEG/MJPEG, HEVC/H.265, VP9
	Display	1 x VGA (resolution up to 2560x1600@60Hz) 1 x DP (Opt. in rear side, resolution up to 4096x2160 @ 60Hz)
STORAGE	Internal	1 x M.2 2280 (SATA)
	eMMC	eMMC 16GB/32GB
EXPANSION	Interface	1 x M.2 2230 (USB/PCIe) 1 x M.2 3042/3052 (USB 3.0/PCIe) with dual SIM
AUDIO	Audio Codec	Realtek ALC888
ETHERNET	Controller	2 or 3 x Intel® Ethernet Controller I210/I211 GigE LAN 1 x Intel® Ethernet 2.5GigE LAN
LED	Indicators	1 x Power LED 1 x HDD LED 1 x WiFi LED 1 x 4G/5G LED 2 x COM LED 8 x DIO LED
TOP I/O	USB	2 x USB 2.0
	Antenna Hole	4 x antenna opening for 4G/5G/GPS
	SIM slot	Dual SIM
FRONT I/O	Ethernet	2 or 3 x GbE (RJ-45) (configuration options) 1 x 2.5GbE TSN RJ45 1 x Allxon OOB Enabler (by request)
	Serial	2 x RS232/422/485 2 x Isolated COM and 1x 6bit DI & 1x 6bit DO (support 2KV, ED700-EHL22I Only)
	USB	2 or 4 x USB 3.1 (configuration options)
	Display	1 x VGA
	DIO	8-bit DIO (jumper switch to COM) 12-bit isolated DIO (support 2KV, ED700-EHL22I only)
	Antenna Hole	2 x antenna opening for WiFi
WATCHDOG TIMER	Output & Interval	System reset, programmable via software from 1 to 255 seconds
SECURITY	TPM	TPM 2.0 (configuration options)
POWER	Type	Wide range 9~36V
	RTC Battery	RTC battery CR2032
	Connector	3-pole terminal block 2-pin power extension switch onnector
OS SUPPORT	Microsoft	Windows 10 IoT Enterprise 64 Bit
	Linux	Ubuntu 20.04
ENVIRONMENT	Operating Temperature	0 to 60°C -40 to 60°C (Support by Intel® Embedded Series )
	Storage Temperature	-40 to 85°C
	Relative Humidity	10 to 90% RH (non-condensing)
MECHANICAL	Construction	Aluminum + Metal
	Mounting	Wall/DIN rail mount
	Dimensions (W x H x D)	72 x 172 x 118.2 (mm)
	Weight	ED700-EHL: 1.5kg ED700-EHL22I: 1.6kg
	Shock	Operating: 3G, 11ms Non-Operating: 5G, 11ms
STANDARDS AND CERTIFICATIONS	Vibration	Operating: Random 5~500Hz, IEC68-2-64 (3G) Non-Operating: Sine 10~500Hz, IEC68-2-6 (3G)
	Certifications	CE, FCC, RoHS, UKCA

## ORDERING INFORMATION

Model Name	Part Number	CPU	RAM (OnBoard)	eMMC	USB	LAN	COM	DIO	VGA	In-Band ECC Support	Operating Temp.	TCC
ED700-EHL	750-ED70001-000G	J6412	4GB	16GB	2 USB 2.0 4 USB 3.1	1 2.5GbE 2 GbE	2 COM	N/A	1	N/A	0 to 60°C	N/A
ED700-EHL	750-ED70001-100G	x6413E	8GB	32GB	2 USB 2.0 4 USB 3.1	1 2.5GbE 2 GbE	2 COM	N/A	1	YES (Default disabled)	-40 to 60°C	N/A
ED700-EHL	750-ED70001-200G	x6425E	8GB	32GB	2 USB 2.0 2 USB 3.1	1 2.5GbE 3 GbE	2 COM	N/A	1	YES (Default disabled)	-40 to 60°C	N/A
ED700-EHL22I	750-ED71001-300G	J6412	4GB	16GB	2 USB 2.0 4 USB 3.1	1 2.5GbE 2 GbE	2 COM 2 COM(Isolated)	6 bit DI+ 6 bit DO (Isolated)	1	N/A	0 to 60°C	N/A
ED700-EHL22I	750-ED71001-400G	x6425RE	8GB	32GB	2 USB 2.0 2 USB 3.1	1 2.5GbE 3 GbE	2 COM 2 COM(Isolated)	6 bit DI+ 6 bit DO (Isolated)	1	YES (Default disabled)	-40 to 60°C	Support

## OPTIONAL ITEMS

Optional Items	Part Number	Description
Adapter	671-106013-000G	60W 12V inlet C14, locable DC Jack 5.5/2.5mm, cable length 1000mm, wide temp.
	671-106012-000G	60W 12V inlet C14, locable DC Jack 5.5/2.5mm, cable length 1500mm
Power Cord	332-700010-201G	Power Cord US 3pin 1830mm Length
	A81-004003-000G	Power Cord EU 2pin 1830mm Length
	A81-000001-000G	Power Cord China 3pin 1830mm Length
	A81-000046-000G	Power Cord JP 3pin 1830mm length (with DFI PSE logo)
Din Rail kit	761-ED70001-000G	ED700-EHL Din rail kit

## PACKING LIST

1 System unit
2 Wall mount bracket
1 Quick Installation Guide
1 Terminal connector to DC cable

## Assured Systems

Assured Systems is a leading technology company with over 1,500 regular clients in 80 countries, deploying over 85,000 systems to a diverse customer base in 12 years of business. We offer high-quality and innovative rugged computing, display, networking and data collection solutions to the embedded, industrial, and digital-out-of-home market sectors.

### US

[sales@assured-systems.com](mailto:sales@assured-systems.com)

Sales: +1 347 719 4508  
Support: +1 347 719 4508

1309 Coffeen Ave  
Ste 1200  
Sheridan  
WY 82801  
USA

### EMEA

[sales@assured-systems.com](mailto:sales@assured-systems.com)

Sales: +44 (0)1785 879 050  
Support: +44 (0)1785 879 050

Unit A5 Douglas Park  
Stone Business Park  
Stone  
ST15 0YJ  
United Kingdom

VAT Number: 120 9546 28  
Business Registration Number: 07699660