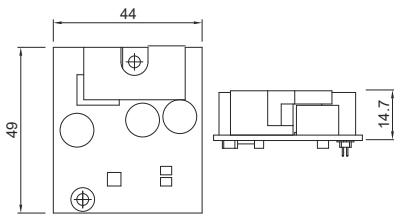


# CFM PoE Module

## CFM-PoE100

PoE Control Function Module,  
Power Boost 50-57V

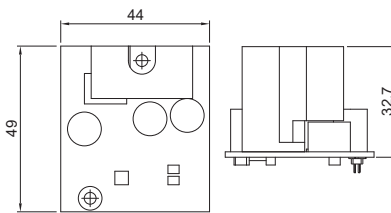
- CFM Interface
- IEEE 802.3at compliant
- Power Boost 50-57V
- Dimension (WxDxH) : 44 x 49 x 14.7 mm



## CFM-PoE101

PoE Control Function Module,  
Power Boost 50-57V

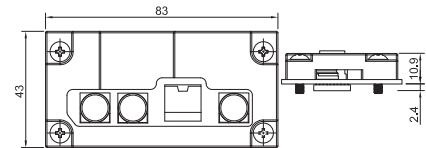
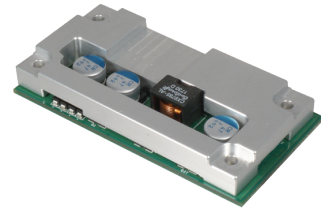
- CFM Interface
- IEEE 802.3at compliant
- Power Boost 50-57V
- Dimension (WxDxH) : 44 x 49 x 32.7 mm



## CFM-PoE01

PoE Control Function Module,  
Power Boost 50-57V

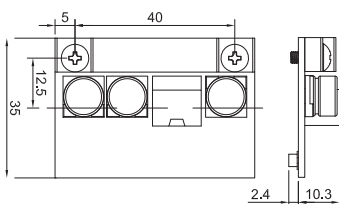
- CFM Interface
- IEEE 802.3at compliant
- Power Boost 50-57V
- Dimension (WxDxH) : 83 x 43 x 10.9 mm



## CFM-PoE02

PoE Control Function Module,  
Power Boost 50-57V

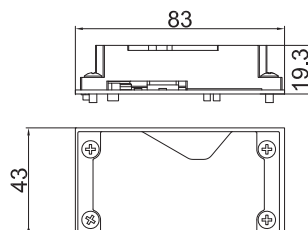
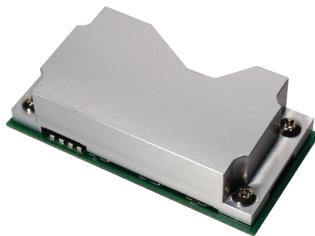
- CFM Interface
- IEEE 802.3at compliant
- Power Boost 50-57V
- Dimension (WxDxH) : 40 x 35 x 10.3 mm



## CFM-PoE03

PoE Control Function Module,  
Power Boost 50-57V

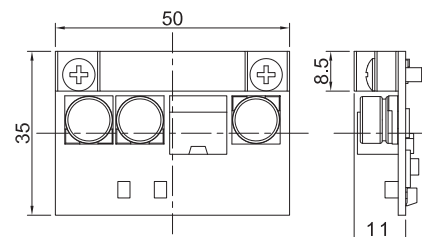
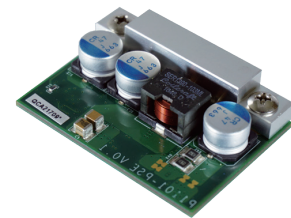
- CFM Interface
- IEEE 802.3at compliant
- Power Boost 50-57V
- Dimension (WxDxH) : 83 x 43 x 19.3 mm



## CFM-PoE04

PoE Control Function Module,  
Power Boost 50-57V

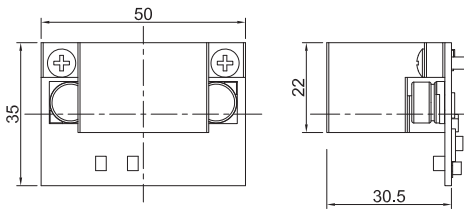
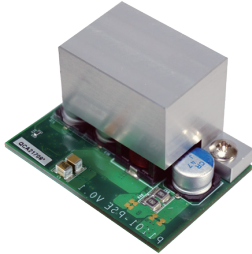
- CFM Interface
- IEEE 802.3at compliant
- Power Boost 50-57V
- Dimension (WxDxH) : 50 x 35 x 11 mm



**CFM-PoE05**

**PoE Control Function Module,  
Power Boost 50-57V**

- CFM Interface
- IEEE 802.3at compliant
- Power Boost 50-57V
- Dimension (WxDxH) : 50 x 35 x 30.5 mm



### Compatible List

Model No.	CFM-PoE100	CFM-PoE101	CFM-PoE01	CFM-PoE02	CFM-PoE03	CFM-PoE04	CFM-PoE05
P1101				V			
P1201				V			
P1301				V			
P2002	V						
P2002E		V					
P2102						V	
P2102E							V
P2202						V	
P2202E							V
DA-1100				V			
DX-1000			V				
DX-1100			V				
DX-1200			V				
DS-1100 Series					V		
DS-1200 Series					V		
DS-1300 Series					V		
DS-1400 Series					V		
DC-1200				V			
GM-1000			V				
GP-3000			V				

V : Compatible

### Ordering Information

Model No.	Description
CFM-PoE100	PoE Control Function Module, Individual port 25.5W
CFM-PoE101	PoE Control Function Module, Individual port 25.5W
CFM-PoE01	PoE Control Function Module, Individual port 25.5W
CFM-PoE02	CFM Module with PoE Control Function, Individual Port 25.5W
CFM-PoE03	CFM Module with PoE Control Function, Individual Port 25.5W
CFM-PoE04	CFM Module with PoE Control Function, Individual Port 25.5W
CFM-PoE05	CFM Module with PoE Control Function, Individual Port 25.5W

Updated: Feb. 07, 2023.

© Cincoze Co., Ltd. All Rights Reserved. Specifications subject to change without notice. All product names, logos, and brands are the property of their respective owners. All company, product and service names used in this document are for identification purposes only. The use of these names, logos, and brands does not imply endorsement.

## Assured Systems

Assured Systems is a leading technology company with over 1,500 regular clients in 80 countries, deploying over 85,000 systems to a diverse customer base in 12 years of business. We offer high-quality and innovative rugged computing, display, networking and data collection solutions to the embedded, industrial, and digital-out-of-home market sectors.

### US

[sales@assured-systems.com](mailto:sales@assured-systems.com)

Sales: +1 347 719 4508  
Support: +1 347 719 4508

1309 Coffeen Ave  
Ste 1200  
Sheridan  
WY 82801  
USA

### EMEA

[sales@assured-systems.com](mailto:sales@assured-systems.com)

Sales: +44 (0)1785 879 050  
Support: +44 (0)1785 879 050

Unit A5 Douglas Park  
Stone Business Park  
Stone  
ST15 0YJ  
United Kingdom

VAT Number: 120 9546 28  
Business Registration Number: 07699660