

# Hisense

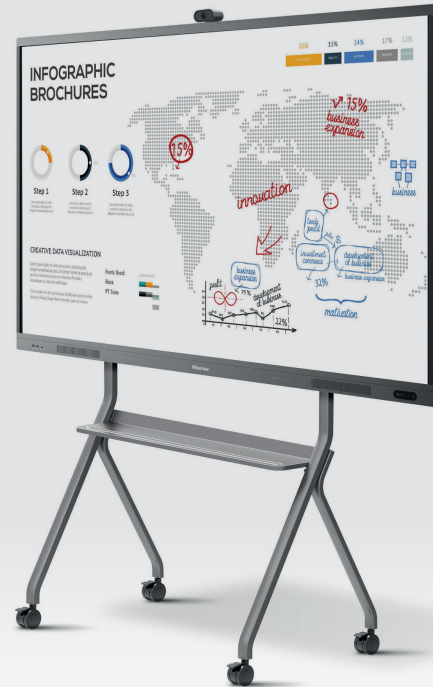


## 75WR6BE

### 75" ADVANCED INTERACTIVE DISPLAY

Our WR series of Hisense Interactive Digital Display include the latest smart features to improve collaboration and create a leading engaging experience for users. The new WR series is available in 3 sizes (65", 75", 86") and their 4K Ultra HD picture quality ensures perfect colour and rich detail. They are touch enabled allowing multiple people to use them at once to present, illustrate and share information. When using the digital whiteboard, our improved IR software now recognises touch points as little as 2mm ensuring the experience is as accurate as writing with pen and paper. New for 2022, the WR range features an optical bonded display that diffuses reflections and bright light to keep the display visible in any lighting conditions. Users can also now wirelessly connect with two or more additional Hisense displays.

75" Advanced Interactive Display



#### Highlights



#### 4K Ultra HD

The 4K Ultra HD picture quality ensures perfect colour and rich details in all possible surroundings. With a high 85% NTSC (122.9% sRGB) colour gamut and 178° wide viewing angle.



#### Plug-in camera

A plug-in camera with an ultra wide 120° angle facilitates videoconferencing. Thanks to a 4K monitoring image sensor, even people in dark light will be visible and vivid.



#### Screen transmission

The WR series interactive digital boards can wirelessly connect with two or more auxiliary screen devices. Near-Field Communication (NFC) touch transmission and A&C screen transmission simplify this process.



#### Array microphones

Six array microphones are able to filter out any ambient noise. As a result you will have an optimal video conference experience without auditory distraction.



#### Automatic sound bar

The power of the sound bar can be turned on or off simultaneously with the interactive digital board. Creating an instant auditive experience.



#### Accurate as analog

The IR software precisely recognizes touch points as little as 2 mm making it as accurate as the experience of writing with pen and paper.



#### Collaborative interaction

The touchscreen recognizes up to 20 touches at once which is ideal for simultaneous use by meeting participants.



#### Powerful Architecture

Expect unstoppable performance by an octa-core processor and 3+32GB large memory.



#### Tempered Glass

Hisense's WR series have heat treated tempered glass preventing any damage to the touch panels.



#### Anti-Glare

Optical technology diffuses mirror-like reflections and bright lights to help keep what's on your screen clear and visible.



#### Comfortable viewing

Each of our Interactive Digital Boards has a filter to effectively reduce blue light so your eyes remain comfortable even when using the screen for longer periods of time.

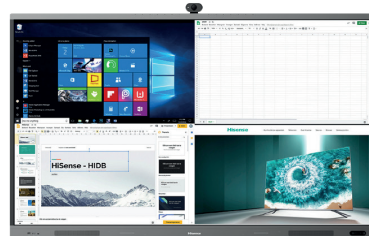
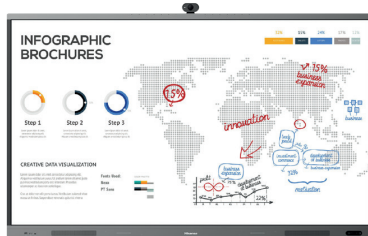


#### Real-time comments

Spectator comments will pop-up onscreen in real-time. Also they will scroll with the page, so no remarks are missed. All without interrupting the person handling the screen.

# Hisense

75" Advanced Interactive Display



## Specifications

### Interactive Display Panel

|                      |                             |
|----------------------|-----------------------------|
| LCD Size             | 75"                         |
| Backlight Type       | D-LED                       |
| Resolution           | 3840x2160(pixels)           |
| Brightness           | 370cd/m <sup>2</sup> (typ.) |
| Contrast Ratio       | 250,000:1                   |
| Response Time        | 8ms (typ.)                  |
| Refreshing Frequency | 60Hz                        |
| Viewing Angle        | 178° (H) / 178° (V)         |
| Lifetime             | 50,000 hrs (min.)           |
| Color Gamut(X% NTSC) | 85%                         |
| Display Colors       | 1.07B(10bit)                |

### System

|          |  |
|----------|--|
| OS       | Android 8.0  |
| Language | Chinese/English/German/French/Italian /Spanish/Thai/Indonesian |

### Speaker

|                    |            |
|--------------------|------------|
| Audio Output Power | 2 x 15W/8Ω |
|--------------------|------------|

### Connectivity

|           |   |
|-----------|---|
| Wi-Fi     | IEEE 802.11a/b/g/n/ac (2x2) (2.4G and 5G)   |
| Bluetooth | BT5.1   |
| Input     | HDMI IN (2.0) x 2<br>DP IN (1.2a) x 1<br>OPS(optional) x 1<br>LAN x 1<br>USB 2.0 x 2 (1 for Camera)<br>USB 3.0 x 2<br>Type-C x 1<br>Touch x 1<br>RS232 IN x 1 |
| Output    | HDMI OUT (2.0) x 1<br>S/PDIF OUT x 1<br>Audio OUT x1  |

### Power

|                               |                            |
|-------------------------------|----------------------------|
| Power Requirements            | AC 100 V ~ 240 V, 50/60 Hz |
| Power Consumption Without OPS | 350W                       |

### Touch

|                      |                      |
|----------------------|----------------------|
| Sensing Type         | Infrared Touch Frame |
| Surface Protection   | 4mm Anti-Glare Glass |
| Infrared Touch       | ≤20 points           |
| Touch Accuracy       | 90%(±1mm)            |
| Response Time        | ≤8ms                 |
| Minimum Touch Object | ≥2mm                 |

### Physical

|                          |                       |
|--------------------------|-----------------------|
| Housing Color            | Black                 |
| Product Size (W x H x D) | 1718 x 1040 x 102mm   |
| Package Size (W x H x D) | 1886 x 1215 x 304mm   |
| Net Weight               | 47.5kg                |
| Packed Weight            | 61kg                  |
| VESA                     | 600x400mm, 4-M8 screw |

### Optional

|       |                |
|-------|----------------|
| Basic | Mobile Cart    |
|       | OPS            |
|       | Plug-in Camera |

### What's in the box

|       |                    |
|-------|--------------------|
| Basic | User manual        |
|       | Pen x 2            |
|       | Remote Control     |
|       | Hanging Wheel x 4  |
|       | Wireless Cast      |
|       | Power Cable        |
|       | Battery x 2        |
|       | Wall Mount Bracket |

### HISENSE B2B EUROPE

Beechavenue 139,  
1119 RB Schiphol-Rijk,  
Netherlands

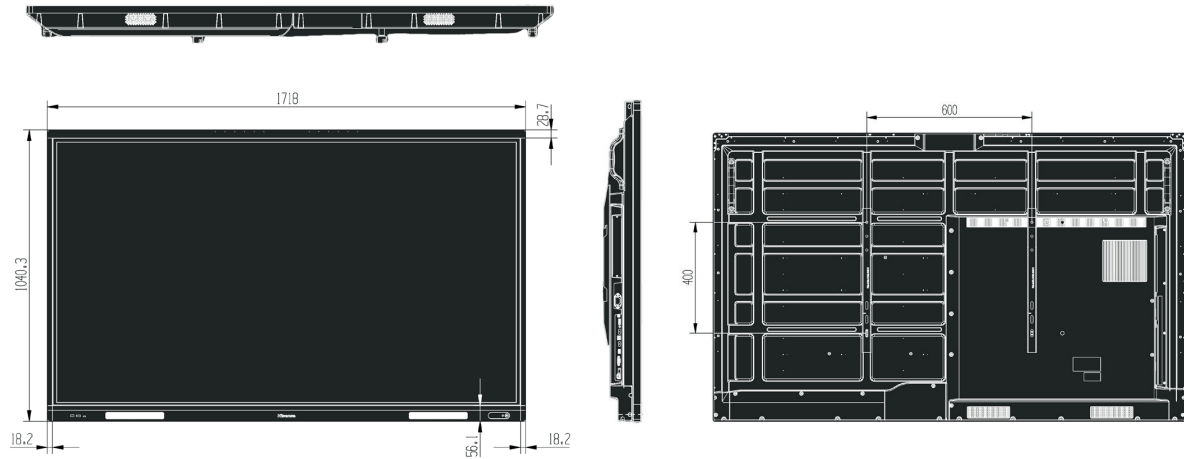
[www.hisense-b2b.com](http://www.hisense-b2b.com)  
[sales@hisense-b2b.com](mailto:sales@hisense-b2b.com)

# Hisense

75" Advanced Interactive Display

## Dimensions

**75"** 1718 x 1040 x 102 mm  
47.5 kg



## Certification

Standard Certification CB, CE, cTUVus, CEC, FCC, ICASA  
EAN 6973172940860



**380 kWh/1000h**



123456789

**HISENSE B2B EUROPE**  
Beechavenue 139,  
1119 RB Schiphol-Rijk,  
Netherlands

[www.hisense-b2b.com](http://www.hisense-b2b.com)  
[sales@hisense-b2b.com](mailto:sales@hisense-b2b.com)

## Assured Systems

Assured Systems is a leading technology company with over 1,500 regular clients in 80 countries, deploying over 85,000 systems to a diverse customer base in 12 years of business. We offer high-quality and innovative rugged computing, display, networking and data collection solutions to the embedded, industrial, and digital-out-of-home market sectors.

### US

[sales@assured-systems.com](mailto:sales@assured-systems.com)

Sales: +1 347 719 4508  
Support: +1 347 719 4508

1309 Coffeen Ave  
Ste 1200  
Sheridan  
WY 82801  
USA

### EMEA

[sales@assured-systems.com](mailto:sales@assured-systems.com)

Sales: +44 (0)1785 879 050  
Support: +44 (0)1785 879 050

Unit A5 Douglas Park  
Stone Business Park  
Stone  
ST15 0YJ  
United Kingdom

VAT Number: 120 9546 28  
Business Registration Number: 07699660