



Industrial Solutions Partner!

DLF/DLH1015-V

10.1" TFT LCD, LED Backlight 1000nits, WSVGA

10.1" TFT LCD panel, built-in 1000 nits high bright for sunlight readable LCD display, high transmittance color filter, high transmission polarizing plates, Low Power Consumption, suitable for kiosk, advertising, POS, marine, transportation, gaming, studio display, gas pump.

Key Features

- Sunlight Readable
- LED Backlight
- High Shock & Vibration Resistance
- Low Power Consumption
- Wide Operation Temp. (-20°C~70°C)
- High Uniformity
- Low EMI Noise
- Wide Dimming
- Life Expectancy



Specifications

V1

Model No.	DLF1015-V	DLH1015-V
Description	10.1" TFT LCD, LED Backlight 1000nits, WSVGA	
Display Area (mm)	222.7 x 125.3 mm	
Brightness	1000 cd/m ²	
Resolution	1024 x 600 (WSVGA)	
Contrast Ratio	900 : 1	
Pixel Pitch (mm)	0.2175(H) x 0.2088(V)	
Viewing Angle	+80°~-80°(H), +80°~-80°(V)	
Display Colors	16.7M	
Response Time (Typical)	16ms (Typical)	
Sync	LVDS	
Power Consumption	4.5W / 6.36W	
Dimensions (mm)	235.0(H) X 143.0(V) X 5.5(D) mm	
Weight (Net)	0.3kg	
LED Driving Board	LID 10A	
Control Board (Optional)	<input type="checkbox"/> AD6038G <input type="checkbox"/> AD6038GA	
	<input type="checkbox"/> AD6038G	VGA
	<input type="checkbox"/> AD6038GA	VGA+Audio
F / R Control Button	<input type="checkbox"/> 4 Key	
	<input type="checkbox"/> 4 Key	Power Switch, Menu, Select (+,-),
OSD Menu	Brightness, Contrast, H/V Position, Color, Phase, Clock...	
Optional	<input type="checkbox"/> AOT <input type="checkbox"/> Touch Screen	

Specifications are subject to change without notice.

All brands or product names are trademarks or registered trademarks of their respective companies.

DLF = Panel+LED Driving Board

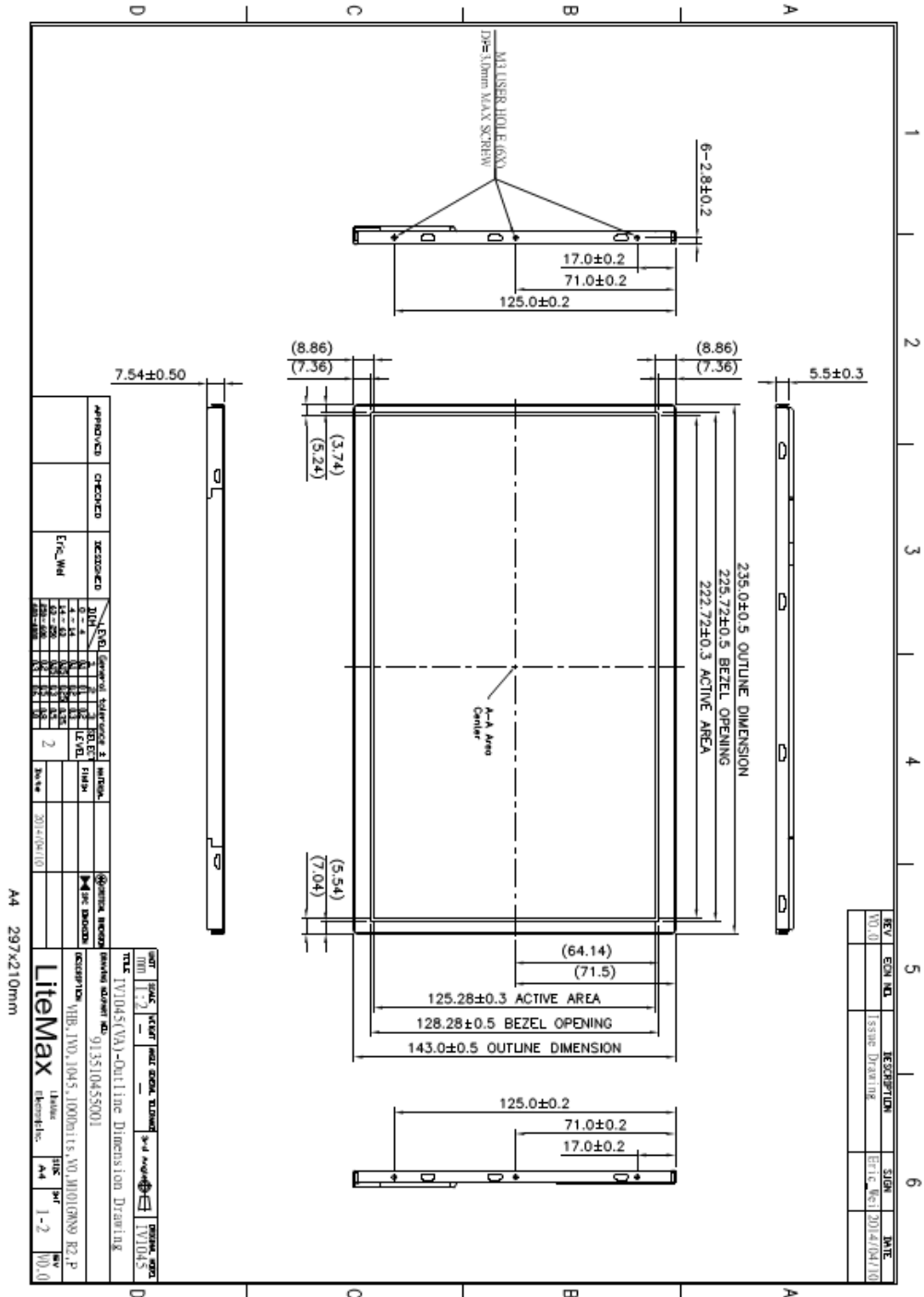
DLH = Panel+LED Driving Board+Control Board

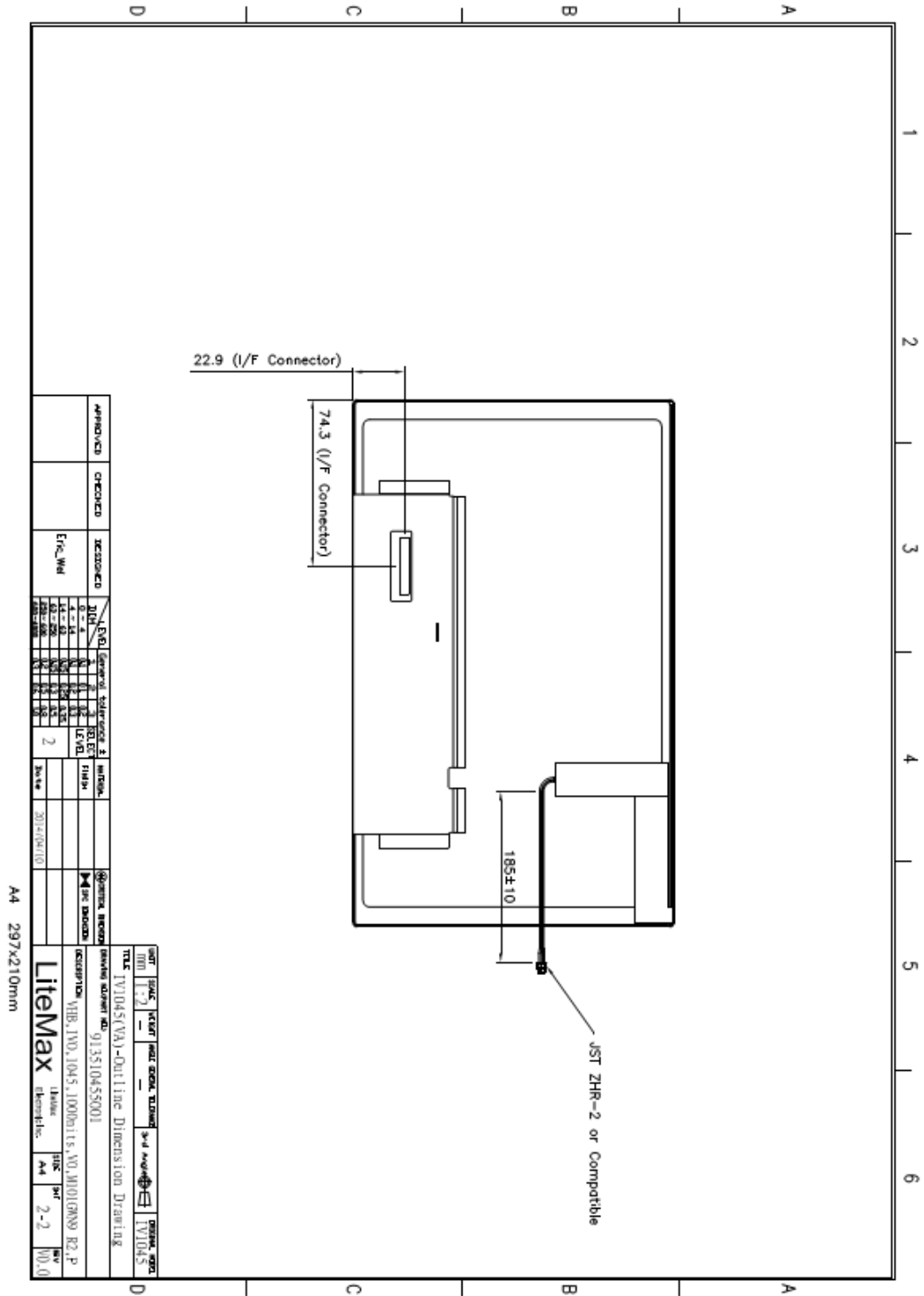


Mechanical Drawing

Outline Dimensions

Unit:mm







Industrial Solutions Partner!

Ordering Information

Part Number	Description
DLF1015-VNN-A01	10.1",1000nits,1024*600.LID10A,V01(5 in 1)
DLH1015-VNN-I01	10.1",1000nits,1024*600,LID10A.AD6038GA,DC12V,V01(5 in 1)

Optional Accessories

Part Number	Description
840612051100	ADAPTER.12V.5A.60W.EA1050A,P
810618301010	CABLE.POWER.AC.1830mm USA type
810618301090	CABLE,POWER,AC,1830mm Europe type
810618301050	CABLE.POWER.AC.1830mm UK type
810618301170	CABLE.POWER,AC,1830mm Australia type
810618301030	CABLE.POWER.AC.1830mm Japan type

Assured Systems

Assured Systems is a leading technology company with over 1,500 regular clients in 80 countries, deploying over 85,000 systems to a diverse customer base in 12 years of business. We offer high-quality and innovative rugged computing, display, networking and data collection solutions to the embedded, industrial, and digital-out-of-home market sectors.

US

sales@assured-systems.com

Sales: +1 347 719 4508
Support: +1 347 719 4508

1309 Coffeen Ave
Ste 1200
Sheridan
WY 82801
USA

EMEA

sales@assured-systems.com

Sales: +44 (0)1785 879 050
Support: +44 (0)1785 879 050

Unit A5 Douglas Park
Stone Business Park
Stone
ST15 0YJ
United Kingdom

VAT Number: 120 9546 28
Business Registration Number: 07699660