



Industrial Solutions Partner!

SSF/SSH2735-A
27.3" Resizing LCD, 1000 nits LED backlight, 945x1080 Square aspect ratio 8:9

SSF/SSH2735-A is an innovative Square, sunlight readable, LED backlight LCD display. It provides LCD panel with specific ratios for digital signage, public transportation, exhibition hall, department store, vending machine and industrial applications. Incorporating with A.D. control board and backlight design, it is high brightness and sunlight readable panel, can display high-quality video with energy-efficient.

Key Features

- Resizing LCD
- Square Screen (8 : 9)
- Sunlight Readable
- LED Backlight
- High Brightness 1000 nits
- Low Power Consumption
- Wide Dimming
- Slim Bezel
- Life Expectancy (70,000hrs)
- Wide Viewing Angle



Specifications		Preliminary
Model No.	SSF/SSH2735-A	
Description	27.3" Resizing LCD, 1000 nits LED backlight, 945x1080	
Display Area	457.85*523.26 mm	
Brightness	1000 cd/m ²	
Resolution	945 x 1080	
Aspect Ratio	8 : 9	
Contrast Ratio	3000:1	
Pixel Pitch (mm)	0.4845 (H) x 0.4845(W)	
Viewing Angle	178°(H), 178°(V)	
Display Colors	16.7M	
Response Time (Typical)	6.5 ms	
Sync	LVDS	
Power Consumption	50W	
Dimensions (mm)	502.7 x 557.1 x 18.7	
Weight (Net)	4.1 kg	
LED Driving Board	LID27A	
Control Board (Optional)	AD2662GDHMA	
<input type="checkbox"/> AD2662GDHMA	VGA + DVI + HDMI + Audio	
F / R Control Button	5 Key / 4 Key	
<input type="checkbox"/> 4 Key	Power Switch, Menu, Select (+,-),	
OSD Menu	Brightness, Contrast, H/V Position, Color, Phase, Clock...	
Optional	N/A	

Specifications are subject to change without notice.
All brands or product names are trademarks or registered trademarks of their respective companies.

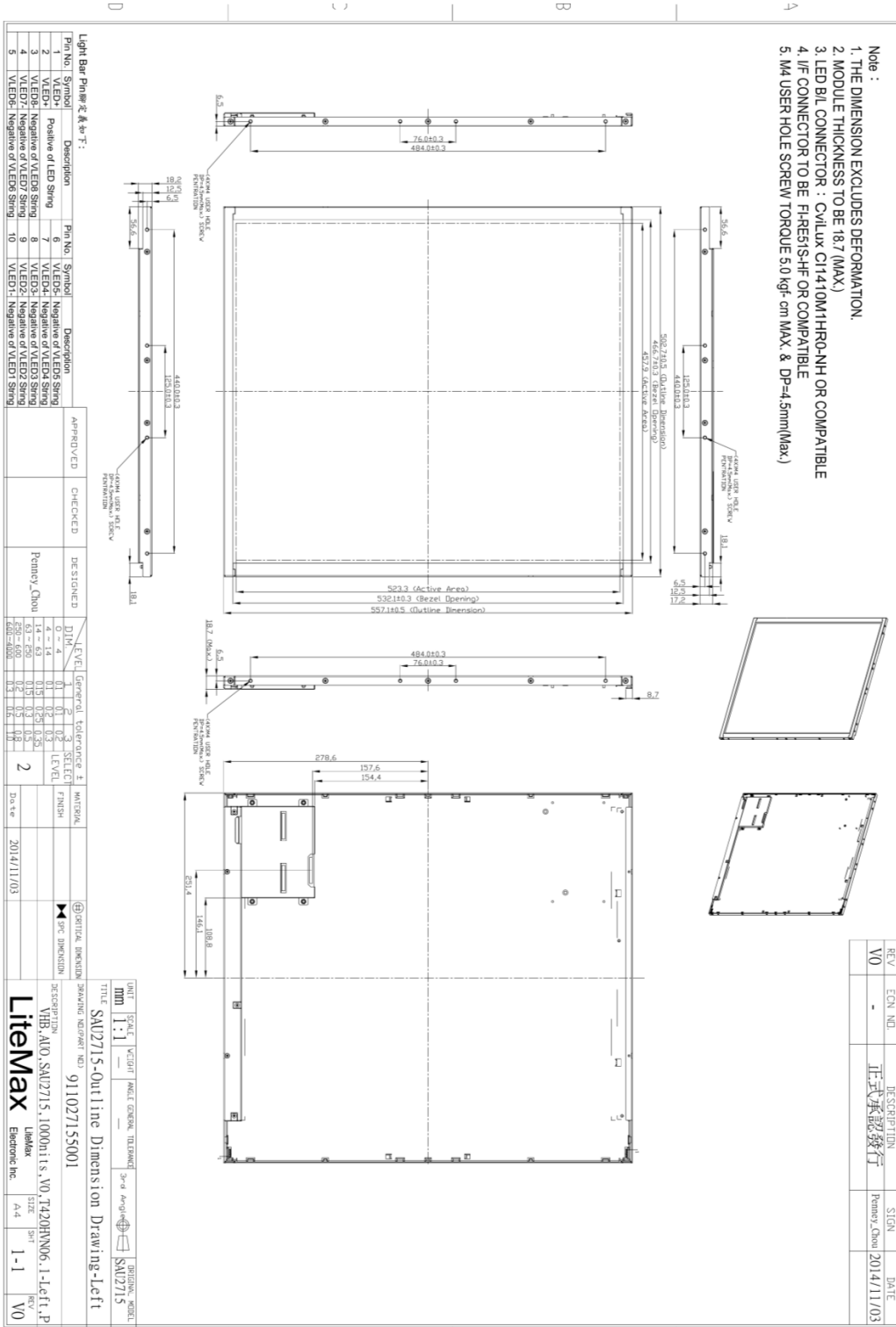
SSF = Panel + LED Driving Board
SSH = Panel + LED Driving Board + Control Board



Mechanical Drawing

Outline Dimensions

Unit: mm





Industrial Solutions Partner!

Ordering Information

Model Name	Description
SSF2735-ANN-A01	27.3",1000nits,945*1080, LID27A,V01 (5 in 1)
SSH2735-ANN-G01	27.3",1000nits,945*1080, LID27A, AD2662GM,DC12V ,V01 (5 in 1)

Optional Accessories

Part Number	Description
810618301010 (Optional)	CABLE.POWER.AC.1830mm.(US Type).3PIN PLUG TO SOCKET.SVT(SPT-2)18AWG 3C BLACK,P.
810618301090 (Optional)	CABLE,POWER,AC,1830mm.(EU Type) 3PIN PLUG TO.SOCKET,H05VV-F 3G.0.75MMSQ BLACK,P
810618301050 (Optional)	CABLE,POWER,AC,1830mm.UK(FUSE) 3PIN PLUG TO.SOCKET,H05VV-F 3C(3G) 0.75MMSQ BLACK,P
810618301170 (Optional)	CABLE.POWER,AC,1830mm. (AU Type) 3PIN PLUG TO 2P SOCKET.LTSA 0.75MMSQ BLACK,P
810618301030 (Optional)	CABLE.POWER.AC.1830mm.(JP Type).2PIN PLUG Y TERMINAL TO. SOCKET.VCTF 3C 0.75MMSQ BLACK,P

Assured Systems

Assured Systems is a leading technology company with over 1,500 regular clients in 80 countries, deploying over 85,000 systems to a diverse customer base in 12 years of business. We offer high-quality and innovative rugged computing, display, networking and data collection solutions to the embedded, industrial, and digital-out-of-home market sectors.

US

sales@assured-systems.com

Sales: +1 347 719 4508
Support: +1 347 719 4508

1309 Coffeen Ave
Ste 1200
Sheridan
WY 82801
USA

EMEA

sales@assured-systems.com

Sales: +44 (0)1785 879 050
Support: +44 (0)1785 879 050

Unit A5 Douglas Park
Stone Business Park
Stone
ST15 0YJ
United Kingdom

VAT Number: 120 9546 28
Business Registration Number: 07699660