



Industrial Solutions Partner!

SSF/SSH4848-A

48.4" Resizing LCD, 1600nits LED backlight, 1920x358 ultra wide aspect ratio 16:3

SSF/SSH4848-A is an innovative ultra-wide, sunlight readable, LED backlight LCD display. It provides LCD panel with specific ratios for digital signage, public transportation, exhibition hall, department store, vending machine and industrial applications. Incorporating with A.D. control board and backlight design, it is high brightness and sunlight readable panel, can display high-quality video with energy-efficient.

Key Features

- Resizing LCD
- Ultra Wide Screen (16 : 3)
- Sunlight Readable
- LED Backlight
- High Brightness 1600 nits
- Low Power Consumption
- Wide Dimming
- Life Expectancy (70,000hrs)
- Slim Bezel



Applications

Digital Signage
Information

Specifications

V1

Model No.	SSF/SSH4848-A
Description	48.4" Wide TFT LCD, LED Backlight 1600 nits, 1920x358
Active Display Area (mm)	1209.6 x 225.5mm
Brightness	1600cd/m ²
Resolution	1920 x 358
Aspect Ratio	16 :3
Contrast Ratio	8000:1
Pixel Pitch (mm)	0.21(H) x 0.63(V) mm
Viewing Angle	R/L 178(Typ.), U/D 178(Typ.)
Display Colors	16.7M colors
Response Time (Typical)	6.5 ms
Sync	LVDS
Power Consumption	73W / 83W
Outline Dimensions (mm)	1244.6x264.9x27.6
Weight (Net)	9kg
LED Driving Board	LID48A
Control Board (Optional)	<input type="checkbox"/> AD2662GDHMMVAR
<input type="checkbox"/> AD2662GDHMMVAR	VGA,DVI,HDMI (option AV/ S-Video/ Component/ Audio)
F / R Control Button	<input type="checkbox"/> 4 Key
<input type="checkbox"/> 4 Key	Power Switch, Menu, Select (+,-),
OSD Menu	Brightness, Contrast, H/V Position, Color, Phase, Clock...
Optional	<input type="checkbox"/> AOT <input type="checkbox"/> Touch Screen

Specifications are subject to change without notice.
All brands or product names are trademarks or registered trademarks of their respective companies.

SSF= Panel + LED Driving Board

SSH= Panel + LED Driving Board + Control Board

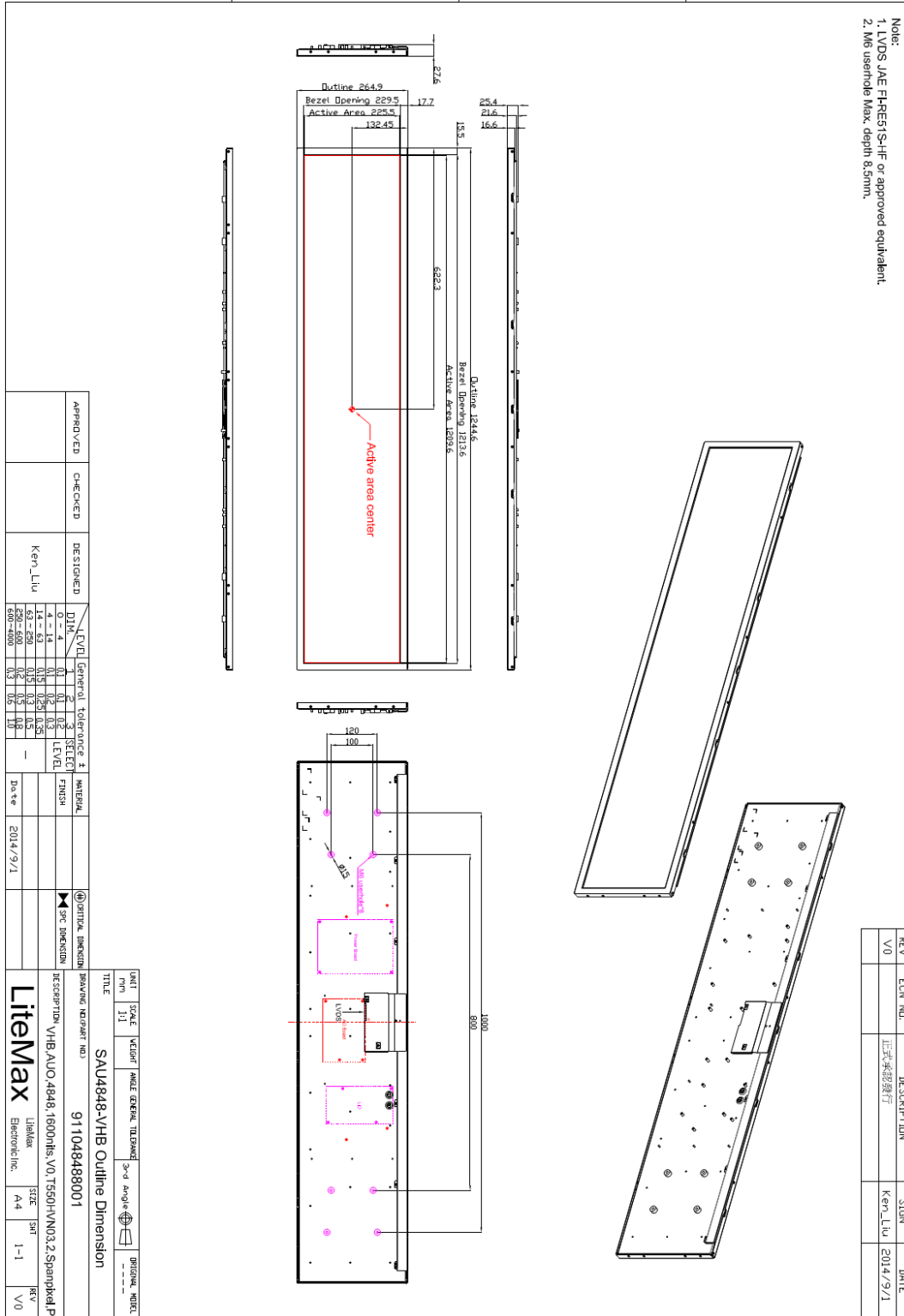


Industrial Solutions Partner!

Mechanical Drawing

Outline Dimensions

Unit:mm



Note:
 1. LVDS JAE FHRE51-S-HF or approved equivalent.
 2. M6 userhole Max. depth 8.5mm.



Industrial Solutions Partner!

Ordering Information

Model Name	Description
SSF4848-ANN-A01	48.4",1600nits,1920X358,LID48A,V01
SSH4848-ANN-G01	48.4",1600nits,1920X358,LID48A,AD2662GDHMVAR,AC100~240V,V01

Optional Accessories

Part Number	Description
980000460010	SET.OTHER,ADAPTER REWORK.60W PAA060F WITH.POWER DIN 4pin lock,P
810618301010	CABLE.POWER.AC.1830mm USA type
810618301090	CABLE.POWER.AC,1830mm Europe type
810618301050	CABLE.POWER.AC.1830mm UK type
810618301170	CABLE.POWER.AC,1830mm Australia type
810618301031	CABLE.POWER.AC.1830mm Japan type

Assured Systems

Assured Systems is a leading technology company with over 1,500 regular clients in 80 countries, deploying over 85,000 systems to a diverse customer base in 12 years of business. We offer high-quality and innovative rugged computing, display, networking and data collection solutions to the embedded, industrial, and digital-out-of-home market sectors.

US

sales@assured-systems.com

Sales: +1 347 719 4508
Support: +1 347 719 4508

1309 Coffeen Ave
Ste 1200
Sheridan
WY 82801
USA

EMEA

sales@assured-systems.com

Sales: +44 (0)1785 879 050
Support: +44 (0)1785 879 050

Unit A5 Douglas Park
Stone Business Park
Stone
ST15 0YJ
United Kingdom

VAT Number: 120 9546 28
Business Registration Number: 07699660