



Industrial Solutions Partner!

SSF/SSH1033

9.9" Resizing LCD Display, Brightness is 700 nits, LED backlight, 800x200 ultra wide aspect ratio 16:4

SSF/SSH1033 is an innovative ultra-wide, LED backlight LCD module. It provides LCD panel with specific ratios for digital signage, public transportation, exhibition hall, department store, and vending machine applications.

Key Features

- 9.9" resizing LCD
- Stretched display (aspect ratio of 16:4)
- Brightness of 700 nits
- Resolutions: 800 x 200
- Low power consumption
- BL MTBF: 70,000 hours



Specifications

V1

Model No.	SSF1033	SSH1033
Description	9.9" Resizing LCD Display, 700nits, LED backlight, 800x200	
Display Area	246.6x 61.5 mm	
Brightness	700nits	
Resolution	800 x 200	
Aspect Ratio	16 : 4	
Contrast Ratio	600:1	
Pixel Pitch (mm)	0.3075 x 0.3075	
Viewing Angle	160°(H), 135°(V)	
Display Colors	262K	
Response Time (Typical)	35 ms	
Power Consumption	3.8W / 9.6W	
Dimensions (mm)	279x87.1x9mm	
Weight (Net)	0.25Kg / 0.38Kg	
LED Driving Board	On module	
Control Board (Optional)	<input type="checkbox"/> AD2662GVA	
<input type="checkbox"/> AD2662GVA	VGA+S-Video+Component+Audio	
<input type="checkbox"/> AD2662GVA + (DVI/ RS232)	VGA+S-Video+Component+Audio (Optional DVI/ RS232)	
F / R Control Button	<input type="checkbox"/> 4 Key	
<input type="checkbox"/> 4 Key	Power Switch, Menu, Select (+,-),	
OSD Menu	Brightness, Contrast, H/V Position, Color, Phase, Clock...	
Optional	<input type="checkbox"/> AOT <input type="checkbox"/> Touch Screen	

Specifications are subject to change without notice.
All brands or product names are trademarks or registered trademarks of their respective companies.

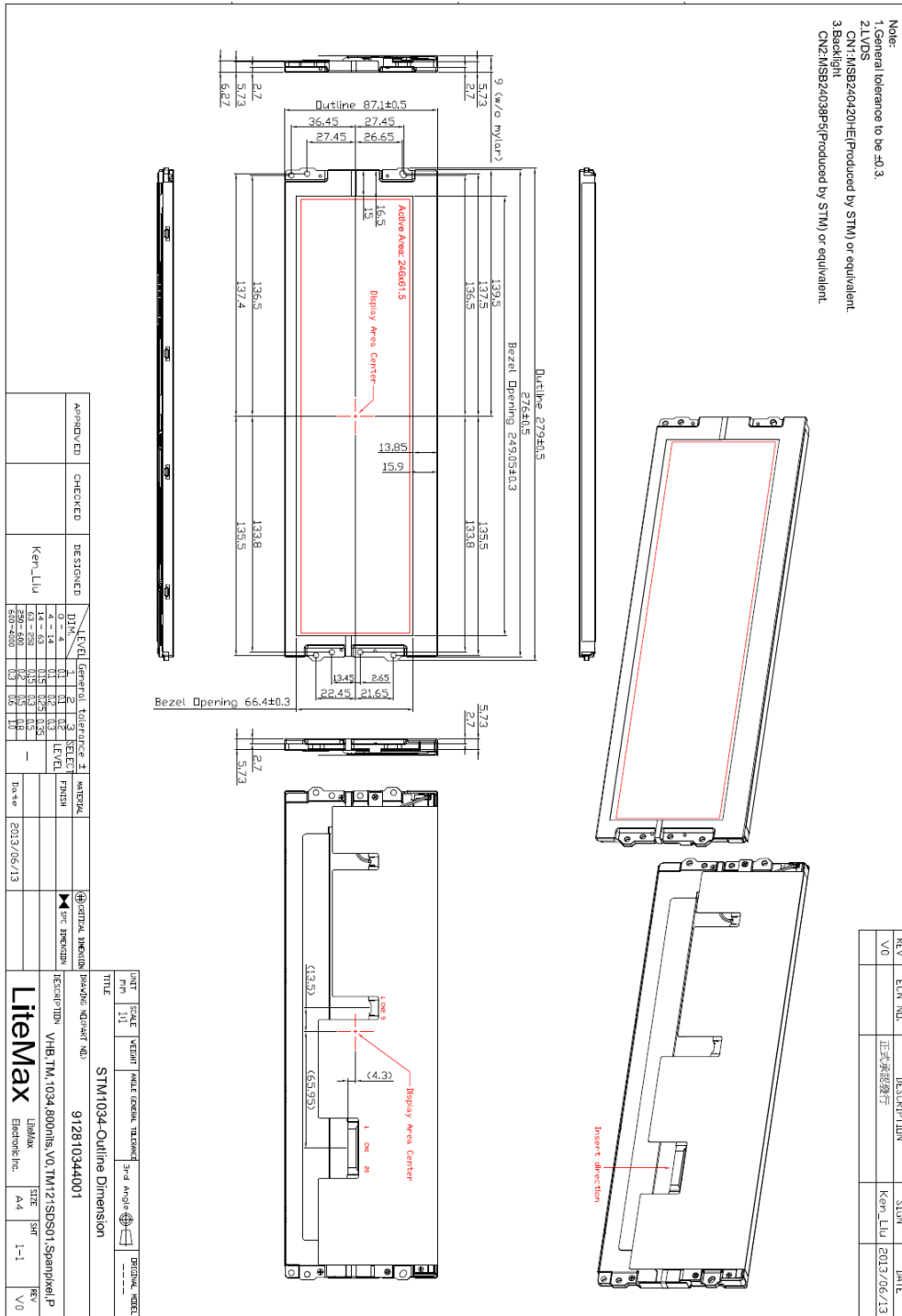
SSF= Panel+ LED Driving Board
SSH= Panel+ LED Driving Board + Control Board



Mechanical Drawing

Panel Outline Dimensions

Unit: mm





Industrial Solutions Partner!

Ordering Information

Part Number	Description
SSF1033-ENN-A01	9.9",700nits,800*200,LID on module,5 in 1,V1
SSH1033-ENN-G01	9.9",700nits,800*200,AD2662GVA,5 in 1,V1

Optional Accessories

Part Number	Description
840612031100	ADAPTER.12V.3.33A.40W,PAA040F,P
810618301010	CABLE.POWER.AC.1830mm USA type
810618301090	CABLE.POWER.AC.1830mm Europe type
810618301050	CABLE.POWER.AC.1830mm UK type
810618301170	CABLE.POWER.AC.1830mm Australia type
810618301030	CABLE.POWER.AC.1830mm Japan type

Assured Systems

Assured Systems is a leading technology company with over 1,500 regular clients in 80 countries, deploying over 85,000 systems to a diverse customer base in 12 years of business. We offer high-quality and innovative rugged computing, display, networking and data collection solutions to the embedded, industrial, and digital-out-of-home market sectors.

US

sales@assured-systems.com

Sales: +1 347 719 4508
Support: +1 347 719 4508

1309 Coffeen Ave
Ste 1200
Sheridan
WY 82801
USA

EMEA

sales@assured-systems.com

Sales: +44 (0)1785 879 050
Support: +44 (0)1785 879 050

Unit A5 Douglas Park
Stone Business Park
Stone
ST15 0YJ
United Kingdom

VAT Number: 120 9546 28
Business Registration Number: 07699660