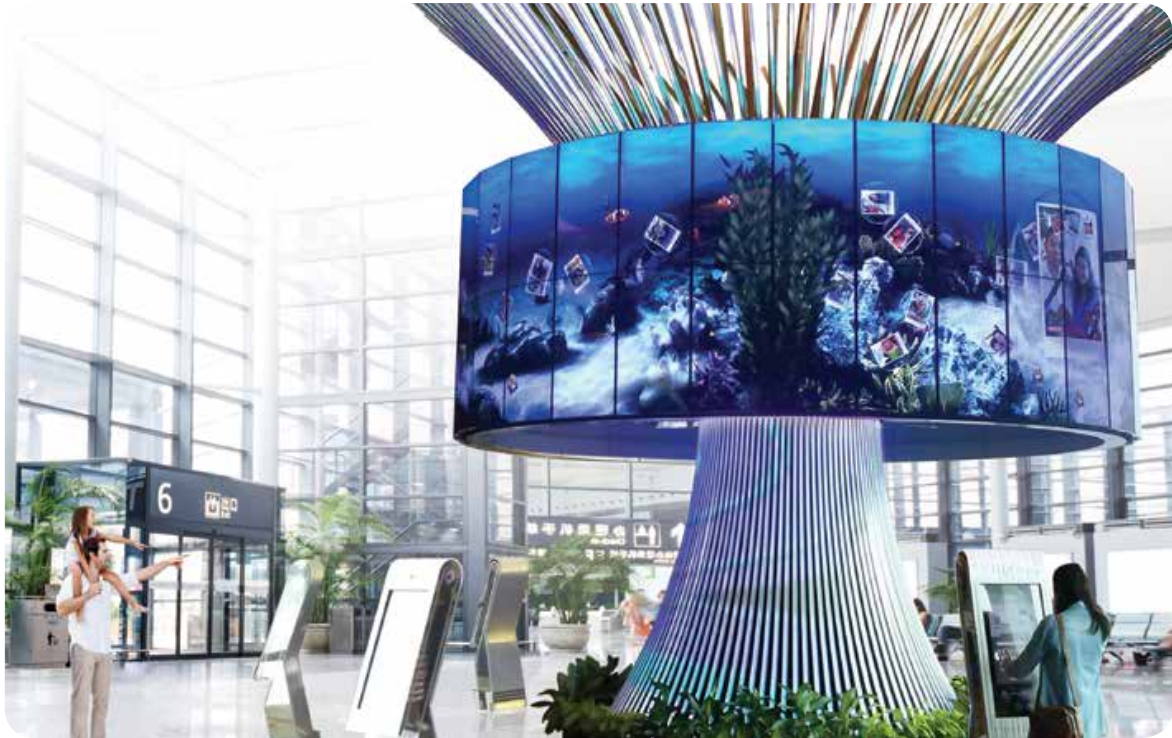


LG's near Seamless video wall

ULTRA NARROW BEZEL PREMIUM DISPLAY LV75A/77A



THE NARROWEST BEZEL OF LG VIDEO WALL DISPLAY

Bezel width of 3.5mm in 55" Super-Narrow Bezel display creates a visually stunning video wall that is easily installed, maintained and managed.

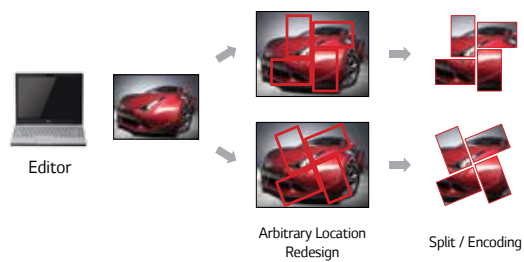
55LV77A / 55LV75A



Active to Active
3.8mm
Bezel to Bezel
3.5mm
2.25mm(Left/Top) / 1.25mm(Right/Bottom)

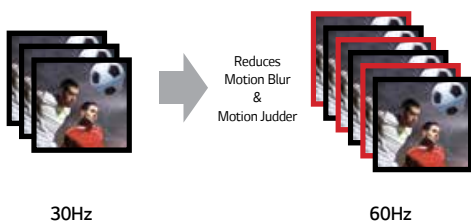
SUPERSIGN V CONTENT MANAGEMENT S/W

Flexible content editing in various layouts including regular matrix and irregular video-wall without the need of an additional video wall console.



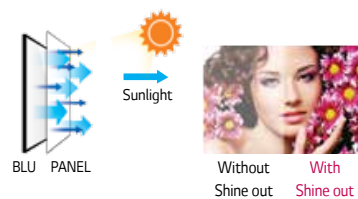
TRUMOTION™ 60HZ REFRESH RATE

TruMotion™ 60Hz refresh rate reduces motion blur and judder, allowing customers to enjoy video content with improved clarity.



SHINE-OUT

Shine-out film enhances the image quality by reducing external light reflections for a vivid clear image.



ULTRA NARROW BEZEL PREMIUM DISPLAY

LV77A/LV75A 55"



FEATURES

- Direct LED
- 700cd/m2 (55LV77A), 500cd/m2 (55LV75A)
- 3.5mm (Bezel to Bezel)
- 1,920 x 1080 (FHD)
- DP1.2 Daisy Chain
- 24/7 Operation
- Landscape/Portrait Mode

SPECIFICATIONS

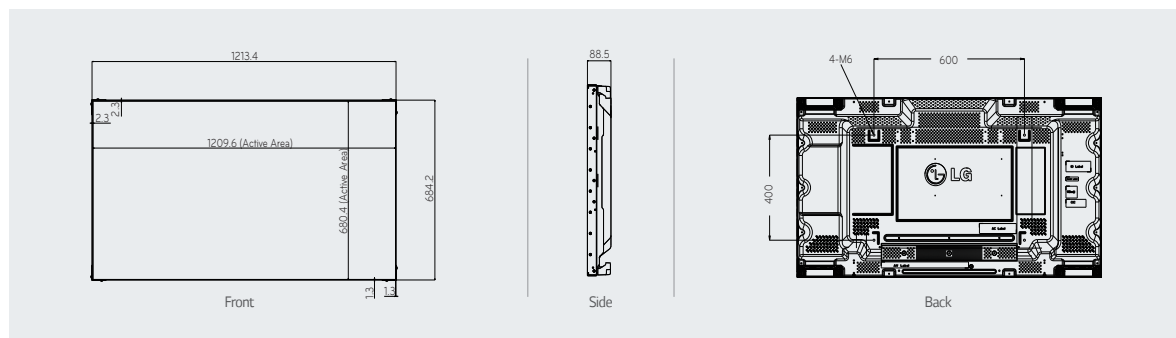
55LV75A/55LV77A

PANEL	Screen Size	LV75A: 55" (139cm), LV77A: 55" (139.7cm)
	Panel Technology	IPS
	Aspect Ratio	16 : 9
	Native Resolution	1,920 x 1,080 (FHD)
	Brightness	500cd / m ² (LV75A), 700cd / m ² (LV77A)
	Contrast Ratio	1,400 : 1
	Dynamic CR	500,000 : 1
	Viewing Angle (H x V)	178 x 178
	Response Time	12ms (G to G)
	CONNECTIVITY	Input
Digital		DVI-D(1), HDMI(1), Display Port(1) with HDCP for all input
Analogue		RGB(1), Shared Component(1), AV (1)
Audio		PC Audio In (1)
External Control		RS232C (1), RJ45 (1), IR Receiver (1)
USB		Yes (1)
Output		
Digital		Display Port (1)
Analogue		RGB(1)
Audio		Audio Out (1)
External Control		RS232C (1)
Audio		
Auto Volume		No
Balance		No
Audio Power	No	
Speaker On/off	No	
Clear Voice II	No	
Sound mode	No	

PHYSICAL SPECIFICATION	Bezel Width	2.3mm(L/T), 1.3mm(R/B)
	Monitor Dimension (W x H x D)	121cm x 68cm x 9cm
	Weight (head)	23kg
	Carton Dimensions (W x H x D)	135cm x 85cm x 25.5cm
	Packed Weight	30.5kg
SPECIAL FEATURES	VESA™ Standard Mount Interface	600mm x 400mm
	Additional	Smart Energy Saving, Temp Sensor, Tile Mode, File Play with USB
ENVIRONMENT CONDITIONS	Operation Temperature	0°C ~ 40°C
	Operation Humidity	10% ~ 80%
POWER	Power Supply	100-240V~, 50/60Hz
	Power Consumption	
	Typical / Smart Energy Saving	LV75A : 60W/90W / LV77A : 230W/120W
	DPMS	0.7W
STANDARD (CERTIFICATION)	Power Off	0.5W
	Safety	UL / cUL / CB-Scheme / TUV / KC
	EMC	FCC Class "B" / CE / KCC / C-tick
MEDIA PLAYER COMPATIBILITY	ErP / Energy Star	Yes / Yes (Energy Star 6.0)
	Slot PC Compatible (optional)	No
SOFTWARE COMPATIBILITY	External Media player Attachable	Yes
	SuperSign Elite-w lite / Elite-c	Yes / Yes
ACCESSORY	Included	Remote Controller, Power Cable, DP Cable, Manual, IR Receiver, RS-232C Cable, Tiling Guide, Screw

* Image may differ slightly from actual product. Specifications are subject to change without prior notice.

DIMENSION (unit : mm)



Assured Systems

Assured Systems is a leading technology company with over 1,500 regular clients in 80 countries, deploying over 85,000 systems to a diverse customer base in 12 years of business. We offer high-quality and innovative rugged computing, display, networking and data collection solutions to the embedded, industrial, and digital-out-of-home market sectors.

US

sales@assured-systems.com

Sales: +1 347 719 4508
Support: +1 347 719 4508

1309 Coffeen Ave
Ste 1200
Sheridan
WY 82801
USA

EMEA

sales@assured-systems.com

Sales: +44 (0)1785 879 050
Support: +44 (0)1785 879 050

Unit A5 Douglas Park
Stone Business Park
Stone
ST15 0YJ
United Kingdom

VAT Number: 120 9546 28
Business Registration Number: 07699660