



Industrial Solutions Partner!

SSF_SSH1922 V2

19" Resizing LCD Monitor, Brightness is 400 nits, LED backlight, 1920x388 ultra wide aspect ratio 16:3.2

SSF_SSH1922 V2 is an innovative ultra-wide, LED backlight LCD monitor. It provides LCD panel with specific ratios for digital signage, public transportation, exhibition hall, department store, and vending machine applications.

Key Features

- Resizing LCD
- Ultra Wide Screen (16 : 3.2)
- LED Backlight
- High Brightness 400nits
- Wide Viewing Angle
- High Resolution
- Wide Dimming



Specifications

V1

Model No.	SSF1922 V2	SSH1922 V2
Description	19" Resizing LCD Monitor, 400nits, LED backlight, 1920x388	
Display Area (mm)	476.64 x 96.3 mm	
Brightness	400nits	
Resolution	1920 x 388	
Aspect Ratio	16 : 3.2	
Contrast Ratio	3000 : 1	
Pixel Pitch (mm)	0.248(H) x 0.248(V)	
Pixel Pre Inch (PPI)	103	
Viewing Angle	178°(H), 178°(V)	
Color Saturation (NTSC)	83%	
Display Colors	16.7M	
Response Time (Typical)	25 ms	
Sync	LVDS	
Operating Temperature	0°C ~ 50°C	
Storage Temperature	-20°C ~ 60°C	
Power Consumption	16W / 22.2W	
Dimensions (mm)	495.6 x 121.3 x 12.4 mm	
Weight (Net)	1.2Kg	
LED Driving Board	LID21A	
Control Board (Optional)	<input type="checkbox"/> AD2662GDVAR <input type="checkbox"/> AD2662GDHM	
<input type="checkbox"/> AD2662GDVAR	VGA+DVI (Optional S-Video/ Component / Audio)	
<input type="checkbox"/> AD2662GDHM	VGA+DVI+HDMI	
Rear Control Button	<input type="checkbox"/> 4 Key	
<input type="checkbox"/> 4 Key	Power Switch, Menu, Select (+,-),	
OSD Menu	Brightness, Contrast, H/V Position, Color, Phase, Clock...	
Optional	<input type="checkbox"/> AOT	

*Specifications are subject to change without notice.
All brands or product names are trademarks or registered trademarks of their respective companies.*

SSF= Resizing Panel+LED Driving Board

SSH= Resizing Panel+LED Driving Board+Control Board

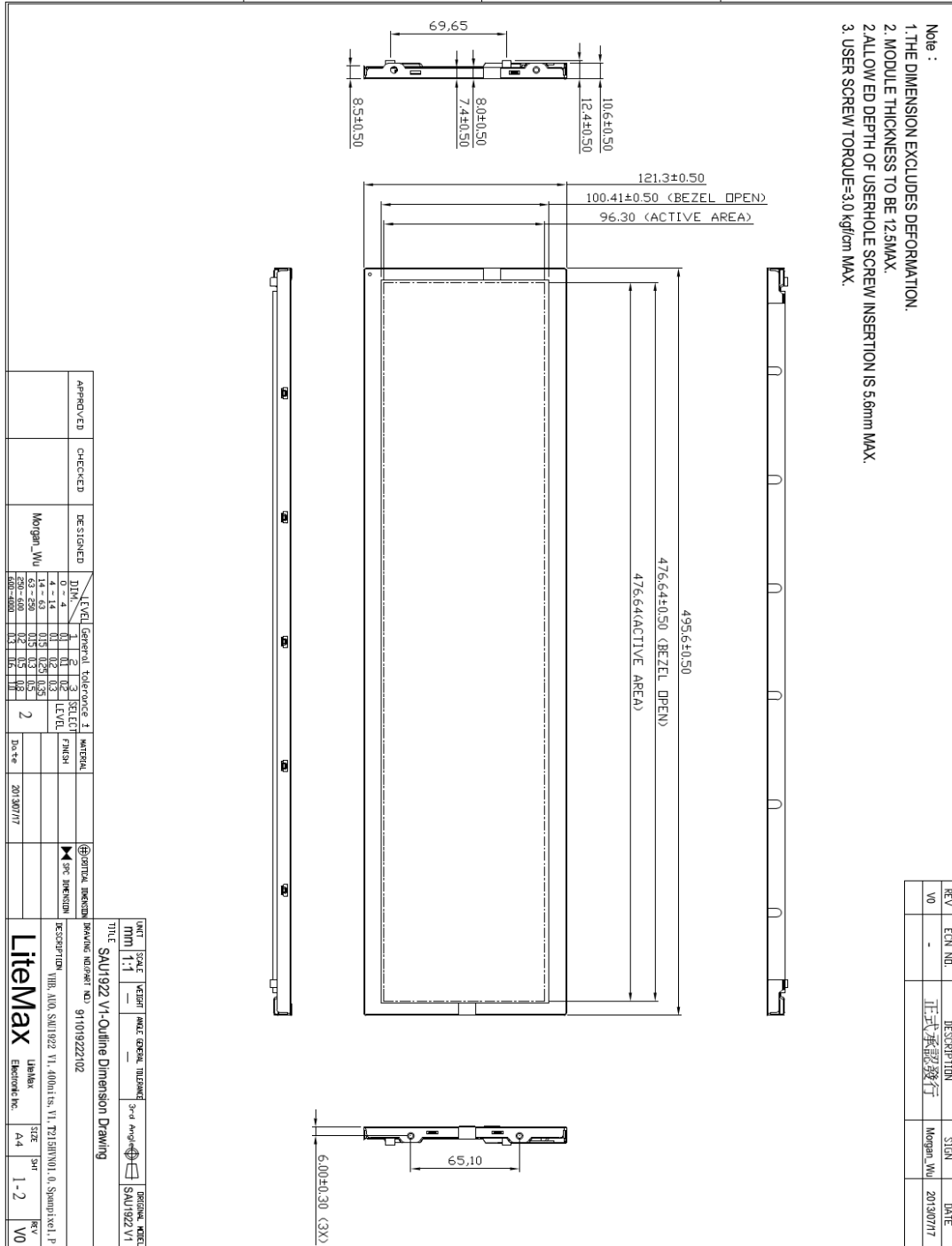


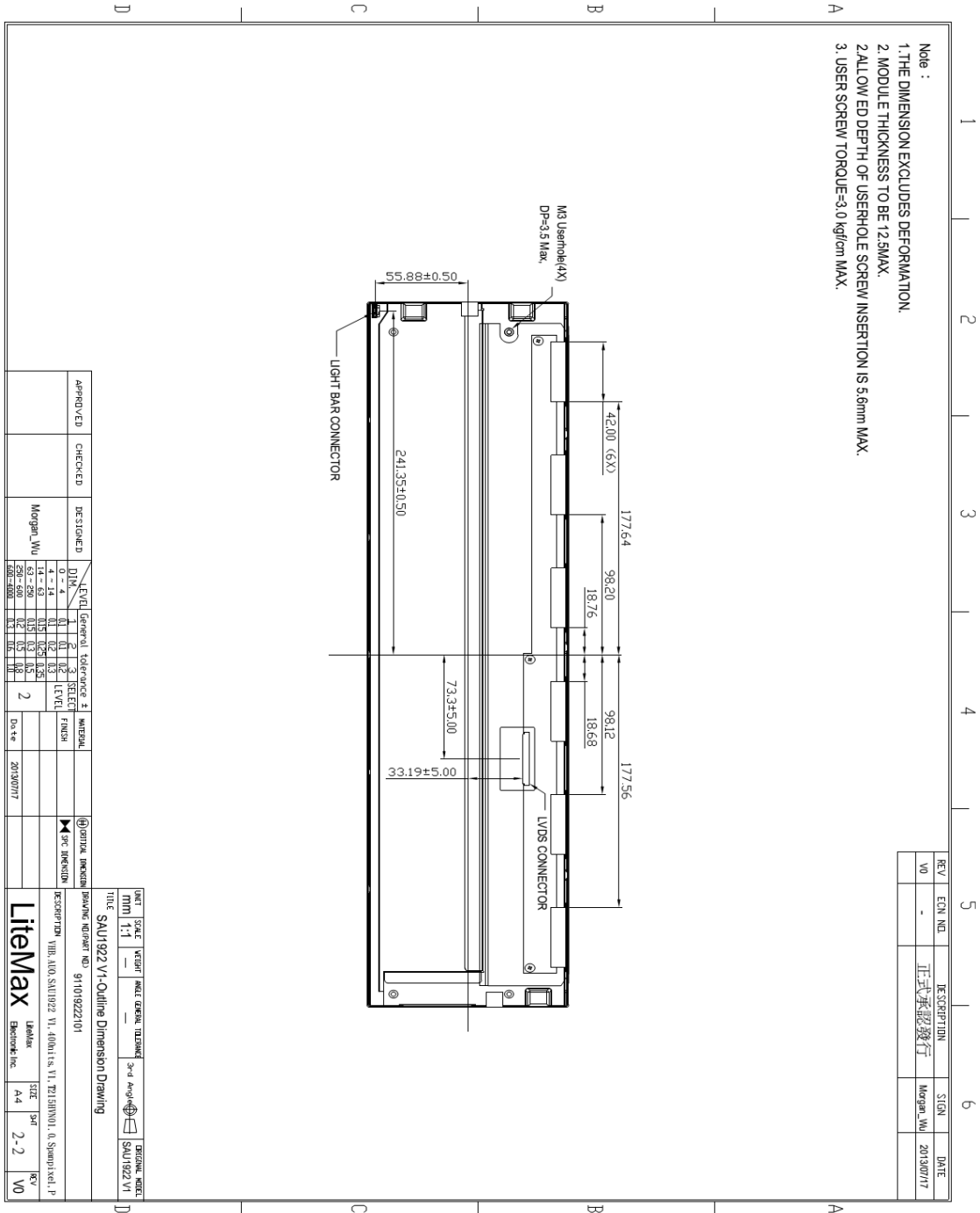
Industrial Solutions Partner!

Mechanical Drawing

Outline Dimensions

Unit:mm





Ordering Information

Model Name	Description
------------	-------------



Industrial Solutions Partner!

SSF1922-ENN-A11	19",400nits,1920*388,LID21A04.5 in 1,V2
------------------------	---

SSH1922-ENN-G11	19",400nits,1920*388,LID21A04.AD2662GD,DC 12V,5 in 1,V2
------------------------	---

Optional Accessories

Part Number	Description
840612051210	ADAPTER,AC/DC,12V/5.4A,65W,Atech OEM A065112-TDx,4P SLIDING CAP,P
810618301010	CABLE.POWER.AC.1830mm USA type
810618301090	CABLE,POWER,AC,1830mm Europe type
810618301050	CABLE.POWER.AC.1830mm UK type
810618301170	CABLE.POWER,AC,1830mm Australia type
810618301031	CABLE.POWER.AC.1830mm Japan type

Assured Systems

Assured Systems is a leading technology company with over 1,500 regular clients in 80 countries, deploying over 85,000 systems to a diverse customer base in 12 years of business. We offer high-quality and innovative rugged computing, display, networking and data collection solutions to the embedded, industrial, and digital-out-of-home market sectors.

US

sales@assured-systems.com

Sales: +1 347 719 4508

Support: +1 347 719 4508

1309 Coffeen Ave
Ste 1200
Sheridan
WY 82801
USA

EMEA

sales@assured-systems.com

Sales: +44 (0)1785 879 050

Support: +44 (0)1785 879 050

Unit A5 Douglas Park
Stone Business Park
Stone
ST15 0YJ
United Kingdom

VAT Number: 120 9546 28

Business Registration Number: 07699660