



Industrial Solutions Partner!

SSF/SSH1393-A

13.9" Resizing LCD, Brightness 600nits, LED backlight, 1280x398 ultra wide aspect ratio 16:5

SSF/SSH1393-A is an innovative ultra-wide, LED backlight LCD display. It provides LCD panel with specific ratios for digital signage, public transportation, exhibition hall, department store, vending machine and industrial applications.

Key Features

- 13.9" resizing LCD
- Stretched display (aspect ratio of 16 : 5)
- Brightness of 600 nits
- Resolutions of 1280 x 398
- Wide temperature range (-30°C~85°C)
- Low power consumption
- BL MTBF: 70,000 hours



Specifications

V1

Model No.	SSF1393-A	SSH1393-A
Description	13.9" Resizing LCD Module, 600nits, LED backlight, 1280x398	
Display Area	337.92x105.14 mm	
Brightness	600nits	
Resolution	1280 x 398	
Aspect Ratio	16 : 5	
Contrast Ratio	700:1	
Pixel Pitch (mm)	0.264 x 0.264	
Viewing Angle	170°(H), 160°(V)	
Display Colors	16.7M	
Response Time (Typical)	30 ms	
Power Consumption	19W	21W
Dimensions (mm)	358.5x130x18	
Weight (Net)	0.7kg	
LED Driving Board	On module	
Control Board (Optional)	<input type="checkbox"/> AD6038GD <input type="checkbox"/> AD2662GD	
F / R Control Button	<input type="checkbox"/> 4 Key <input type="checkbox"/> 4 Key	
OSD Menu	Brightness, Contrast, H/V Position, Color, Phase, Clock...	
Optional	<input type="checkbox"/> AOT <input type="checkbox"/> Touch Screen	

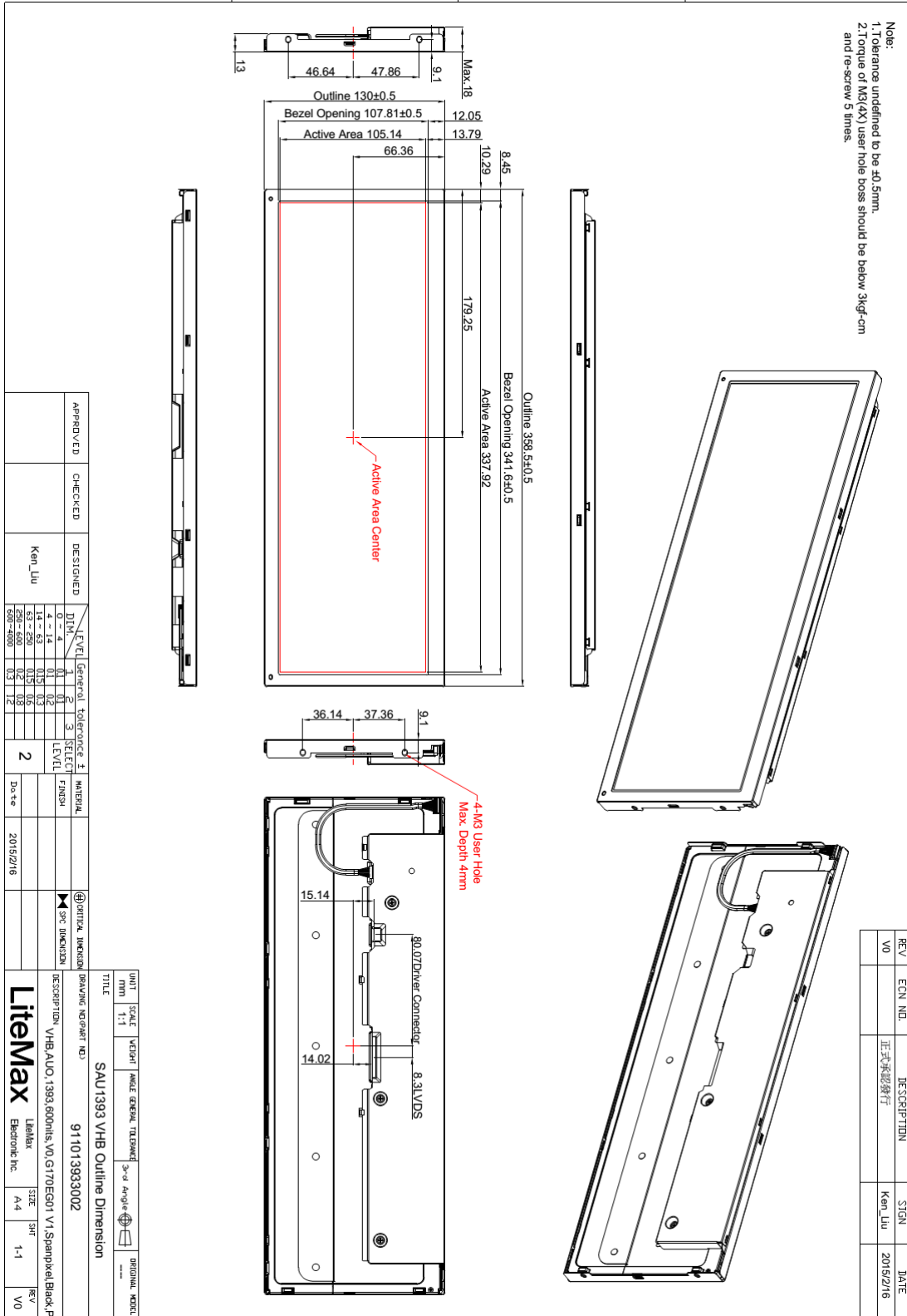
Specifications are subject to change without notice.
All brands or product names are trademarks or registered trademarks of their respective companies.

SSF= Panel+ LED Driving Board
SSH= Panel+ LED Driving Board + AD Board



Industrial Solutions Partner!

Mechanical Drawing





Industrial Solutions Partner!

Ordering Information

Part Number	Description
SSF1393-ANN-A01	13.9",600nits,1280*398,LID on module,10in1,V01
SSH1393-ANN-I01	13.9",600nits,1280*398,LID on module,AD6038GD,DC12V,5in1,V01

Optional Accessories

Part Number	Description
840612051210	ADAPTER,AC/DC,12V/5.4A,65W,Atech OEM A065112-TDx.4P SLIDING CAP,P
810618301010	CABLE.POWER.AC.1830mm USA type
810618301090	CABLE,POWER,AC,1830mm Europe type
810618301050	CABLE.POWER.AC.1830mm UK type
810618301170	CABLE.POWER,AC,1830mm Australia type
810618301030	CABLE.POWER.AC.1830mm Japan type

Assured Systems

Assured Systems is a leading technology company with over 1,500 regular clients in 80 countries, deploying over 85,000 systems to a diverse customer base in 12 years of business. We offer high-quality and innovative rugged computing, display, networking and data collection solutions to the embedded, industrial, and digital-out-of-home market sectors.

US

sales@assured-systems.com

Sales: +1 347 719 4508
Support: +1 347 719 4508

1309 Coffeen Ave
Ste 1200
Sheridan
WY 82801
USA

EMEA

sales@assured-systems.com

Sales: +44 (0)1785 879 050
Support: +44 (0)1785 879 050

Unit A5 Douglas Park
Stone Business Park
Stone
ST15 0YJ
United Kingdom

VAT Number: 120 9546 28
Business Registration Number: 07699660