



Industrial Solutions Partner!

SSD1033

9.98" Resizing LCD Display, Brightness is 700 nits, LED backlight, 800x200 ultra wide aspect ratio 16:3

SSD1033 is an innovative ultra-wide, LED backlight LCD module. It provides LCD panel with specific ratios for digital signage, public transportation, exhibition hall, department store, and vending machine applications.

Key Features

- Resizing LCD
- Ultra Wide Screen (16 : 3)
- LED Backlight
- High Brightness 700nits
- Low Power Consumption
- High Uniformity
- Wide Dimming



Specifications

V1

| | |
|--|---|
| Model No. | SSD1033 |
| Description | 9.98" Resizing LCD Display, 700nits, LED backlight, 800x200 |
| Display Area | 246.6x 61.5 mm |
| Brightness | 700nits |
| Resolution | 800 x 200 |
| Aspect Ratio | 16 : 3 |
| Contrast Ratio | 600:1 |
| Pixel Pitch (mm) | 0.3075 x 0.3075 |
| Viewing Angle | 160°(H), 135°(V) |
| Display Colors | 262K |
| Response Time (Typical) | 35 ms |
| Power Consumption | 9.6W |
| Dimensions (mm) | 291x106.2x46.2mm |
| Weight (Net) | 1.2Kg |
| LED Driving Board | On module |
| Control Board (Optional) | <input type="checkbox"/> AD2662GVA <input type="checkbox"/> AD2662GVA + (DVI/ RS232) |
| <input type="checkbox"/> AD2662GV | VGA+S-Video+AV |
| <input type="checkbox"/> AD2662GVA | VGA+S-Video+AV+Audio |
| <input type="checkbox"/> AD2662GVA + (DVI/ RS232) | VGA+S-Video+AV+Audio (Optional DVI/ RS232) |
| F / R Control Button | <input type="checkbox"/> 4 Key |
| <input type="checkbox"/> 4 Key | Power Switch, Menu, Select (+,-), |
| OSD Menu | Brightness, Contrast, H/V Position, Color, Phase, Clock... |
| Optional | <input type="checkbox"/> AOT <input type="checkbox"/> Touch Screen |

Specifications are subject to change without notice.

All brands or product names are trademarks or registered trademarks of their respective companies.

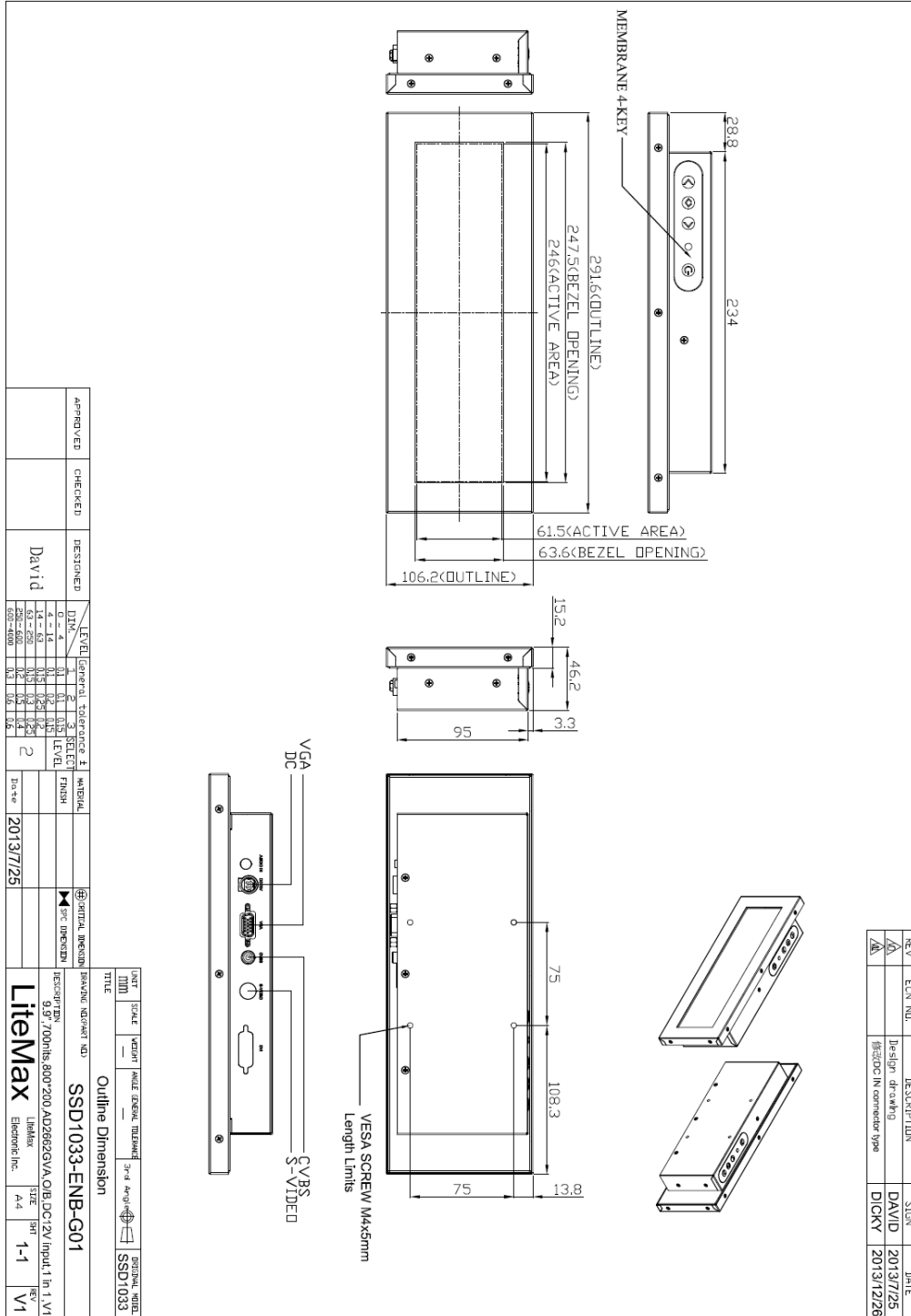
SSD= Panel+ LED Driving Board + Control Board



Mechanical Drawing

Outline Dimensions

Unit: mm





Industrial Solutions Partner!

Ordering Information

| Part Number | Description |
|-----------------|---|
| SSD1033-ENB-G01 | 9.9",700nits,800*200,AD2662GV,O/B,DC12V input,1 in 1,V1 |
| | |

Optional Accessories

| Part Number | Description |
|--------------|--------------------------------------|
| 840612031100 | ADAPTER.12V.3.33A.40W,PAA040F,P |
| 810618301010 | CABLE.POWER.AC.1830mm USA type |
| 810618301090 | CABLE,POWER,AC,1830mm Europe type |
| 810618301050 | CABLE.POWER.AC.1830mm UK type |
| 810618301170 | CABLE.POWER,AC,1830mm Australia type |
| 810618301030 | CABLE.POWER.AC.1830mm Japan type |

Assured Systems

Assured Systems is a leading technology company with over 1,500 regular clients in 80 countries, deploying over 85,000 systems to a diverse customer base in 12 years of business. We offer high-quality and innovative rugged computing, display, networking and data collection solutions to the embedded, industrial, and digital-out-of-home market sectors.

US

sales@assured-systems.com

Sales: +1 347 719 4508
Support: +1 347 719 4508

1309 Coffeen Ave
Ste 1200
Sheridan
WY 82801
USA

EMEA

sales@assured-systems.com

Sales: +44 (0)1785 879 050
Support: +44 (0)1785 879 050

Unit A5 Douglas Park
Stone Business Park
Stone
ST15 0YJ
United Kingdom

VAT Number: 120 9546 28
Business Registration Number: 07699660