



Industrial Solutions Partner!

**SSF\_SSH1922 V2**

**19" Resizing LCD Monitor, Brightness is 400 nits, LED backlight, 1920x388 ultra wide aspect ratio 16:3.2**

SSF\_SSH1922 V2 is an innovative ultra-wide, LED backlight LCD monitor. It provides LCD panel with specific ratios for digital signage, public transportation, exhibition hall, department store, and vending machine applications.

**Key Features**

- Resizing LCD
- Ultra Wide Screen (16 : 3.2)
- LED Backlight
- High Brightness 400nits
- Wide Viewing Angle
- High Resolution
- Wide Dimming



**Specifications**

V1

Model No.	SSF1922 V2	SSH1922 V2
Description	19" Resizing LCD Monitor, 400nits, LED backlight, 1920x388	
Display Area (mm)	476.64 x 96.3 mm	
Brightness	400nits	
Resolution	1920 x 388	
Aspect Ratio	16 : 3.2	
Contrast Ratio	3000 : 1	
Pixel Pitch (mm)	0.248(H) x 0.248(V)	
Pixel Pre Inch (PPI)	103	
Viewing Angle	178°(H), 178°(V)	
Color Saturation (NTSC)	83%	
Display Colors	16.7M	
Response Time (Typical)	25 ms	
Sync	LVDS	
Operating Temperature	0°C ~ 50°C	
Storage Temperature	-20°C ~ 60°C	
Power Consumption	16W / 22.2W	
Dimensions (mm)	495.6 x 121.3 x 12.4 mm	
Weight (Net)	1.2Kg	
LED Driving Board	LID21A	
Control Board (Optional)	<input type="checkbox"/> AD2662GDVAR <input type="checkbox"/> AD2662GDHM	
<input type="checkbox"/> AD2662GDVAR	VGA+DVI (Optional S-Video/ Component / Audio)	
<input type="checkbox"/> AD2662GDHM	VGA+DVI+HDMI	
Rear Control Button	<input type="checkbox"/> 4 Key	
<input type="checkbox"/> 4 Key	Power Switch, Menu, Select (+,-),	
OSD Menu	Brightness, Contrast, H/V Position, Color, Phase, Clock...	
Optional	<input type="checkbox"/> AOT	

*Specifications are subject to change without notice.  
All brands or product names are trademarks or registered trademarks of their respective companies.*

SSF= Resizing Panel+LED Driving Board

SSH= Resizing Panel+LED Driving Board+Control Board

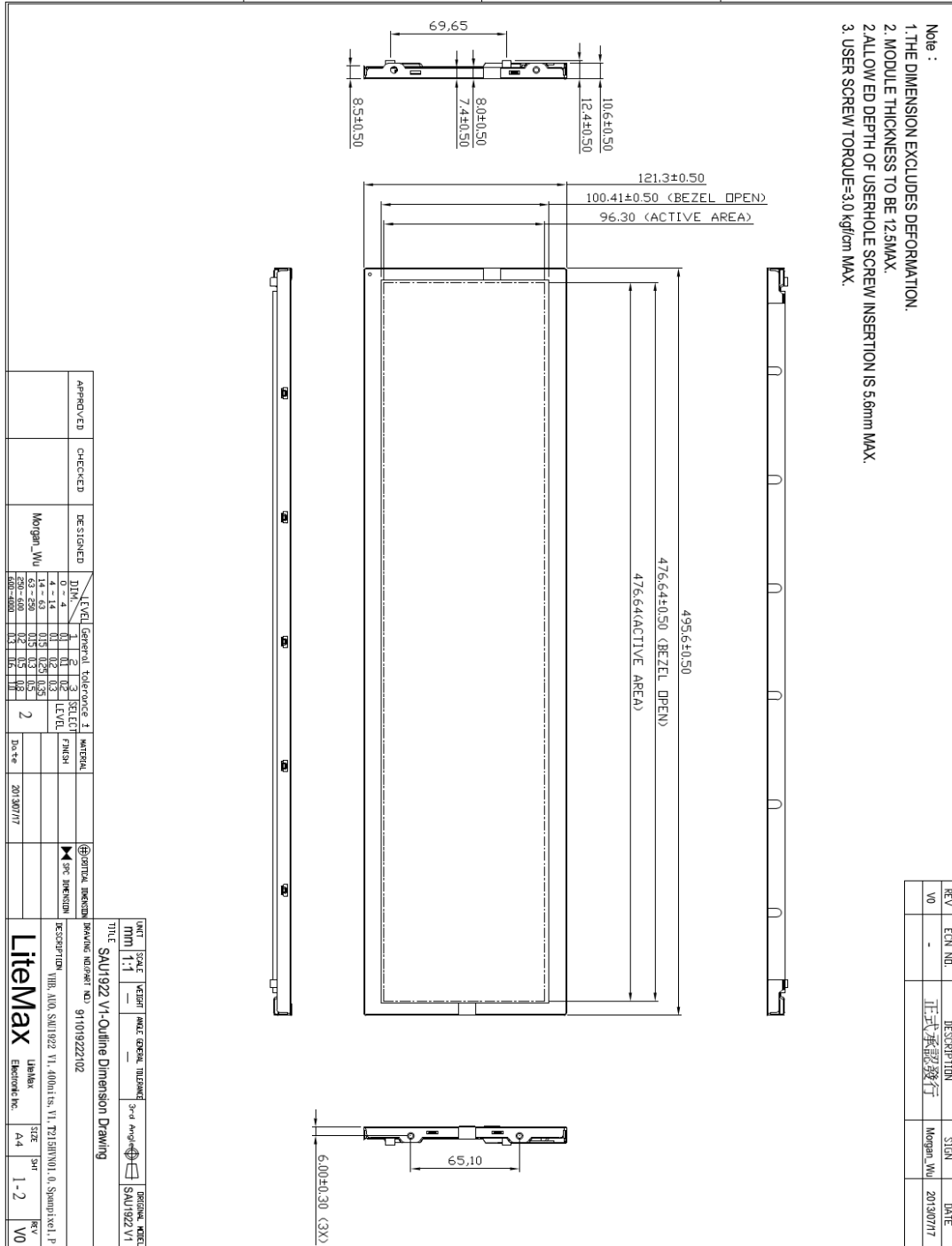


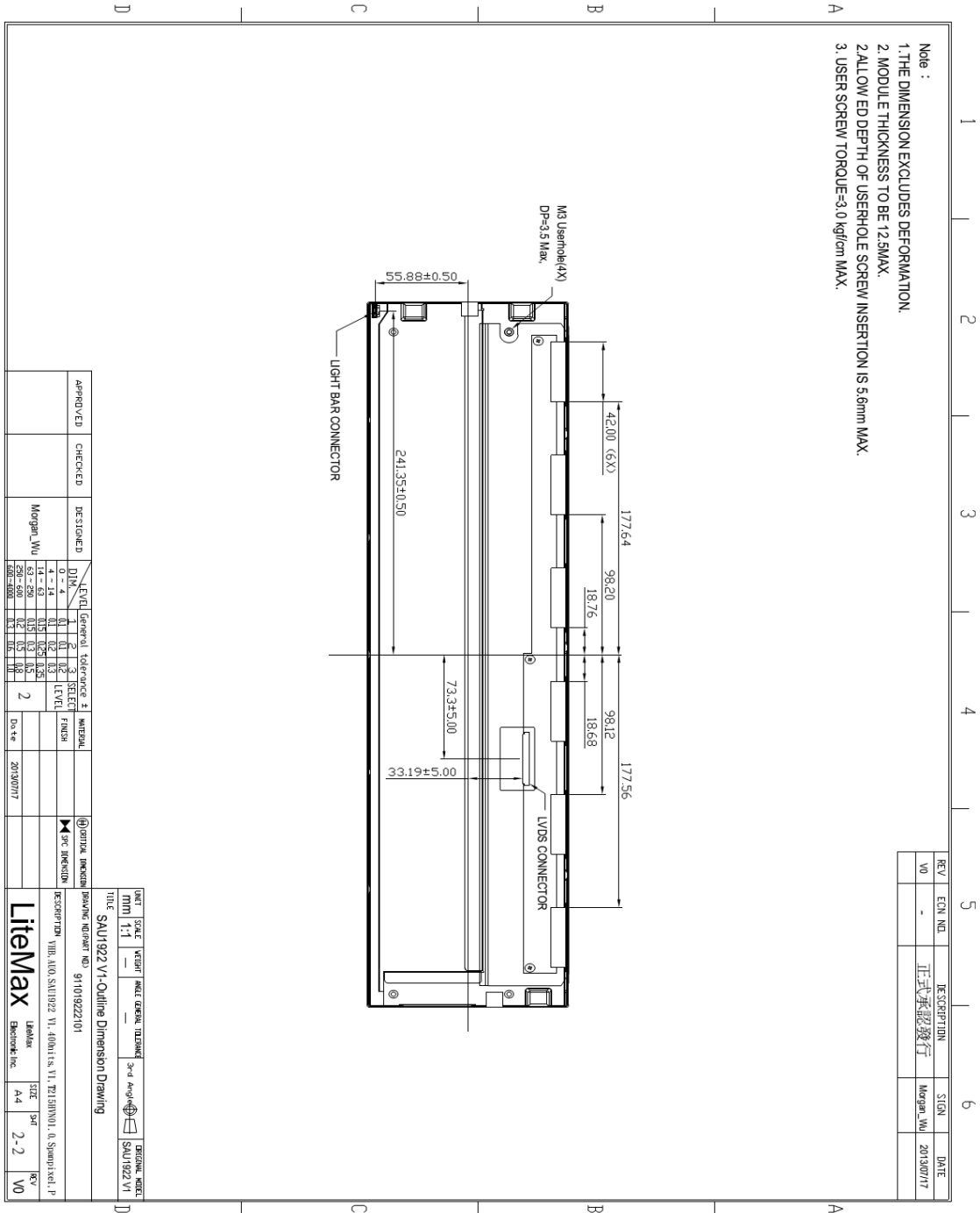
Industrial Solutions Partner!

**Mechanical Drawing**

**Outline Dimensions**

Unit:mm





**Ordering Information**

Model Name	Description
Litemax	



<b>SSF1922-ENN-A11</b>	19",400nits,1920*388,LID21A04.5 in 1,V2
------------------------	---

<b>SSH1922-ENN-G11</b>	19",400nits,1920*388,LID21A04.AD2662GD,DC 12V,5 in 1,V2
------------------------	---

**Optional Accessories**

<b>Part Number</b>	<b>Description</b>
<b>840612051210</b>	ADAPTER,AC/DC,12V/5.4A,65W,Atech OEM A065112-TDx,4P SLIDING CAP,P
<b>810618301010</b>	CABLE.POWER.AC.1830mm USA type
<b>810618301090</b>	CABLE,POWER,AC,1830mm Europe type
<b>810618301050</b>	CABLE.POWER.AC.1830mm UK type
<b>810618301170</b>	CABLE.POWER,AC,1830mm Australia type
<b>810618301031</b>	CABLE.POWER.AC.1830mm Japan type

## Assured Systems

Assured Systems is a leading technology company with over 1,500 regular clients in 80 countries, deploying over 85,000 systems to a diverse customer base in 12 years of business. We offer high-quality and innovative rugged computing, display, networking and data collection solutions to the embedded, industrial, and digital-out-of-home market sectors.

### US

[sales@assured-systems.com](mailto:sales@assured-systems.com)

Sales: +1 347 719 4508  
Support: +1 347 719 4508

1309 Coffeen Ave  
Ste 1200  
Sheridan  
WY 82801  
USA

### EMEA

[sales@assured-systems.com](mailto:sales@assured-systems.com)

Sales: +44 (0)1785 879 050  
Support: +44 (0)1785 879 050

Unit A5 Douglas Park  
Stone Business Park  
Stone  
ST15 0YJ  
United Kingdom

VAT Number: 120 9546 28  
Business Registration Number: 07699660