

EC543-CS Q370

8th/9th Gen Intel® Core™
Modular-Designed Embedded System



KEY FEATURES



DDR4

DDR4 SODIMM up to 64GB



PoE

Support 4 PoE (EC543-CS6G86E-Q)



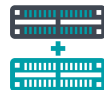
Three Independent Displays

1 VGA + 2 HDMI/DP++ (auto detection)



Support 5G Communication

Support 5G communication



Multiple Expansion

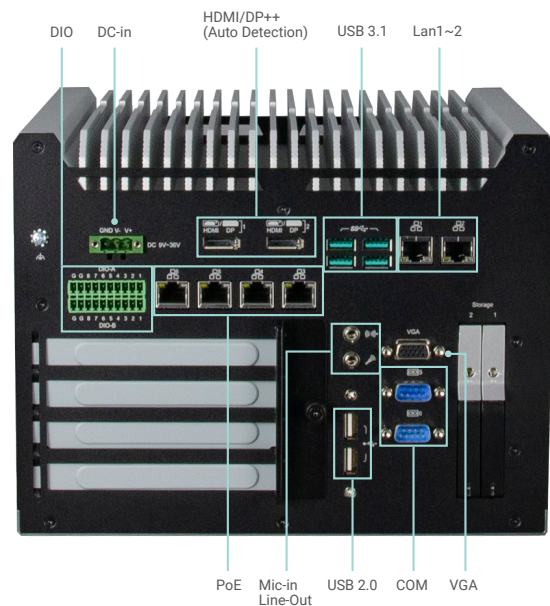
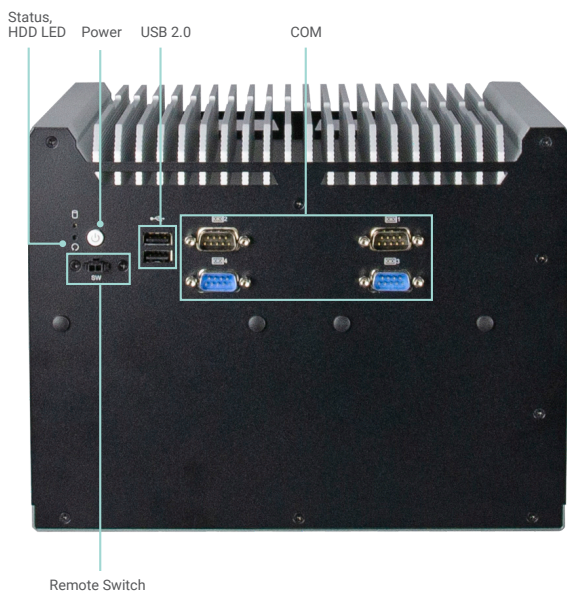
3 PCIe, 1 PCI and 3 M.2 slots support NVMe



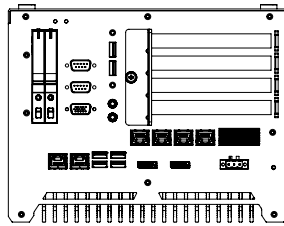
Wide-Temperature

Operating Temperature: -20 to 70°C

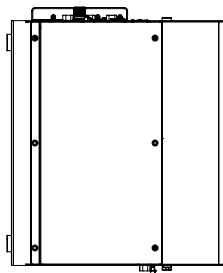
PANEL



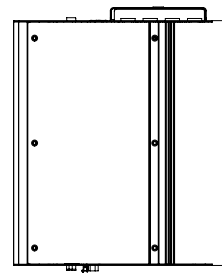
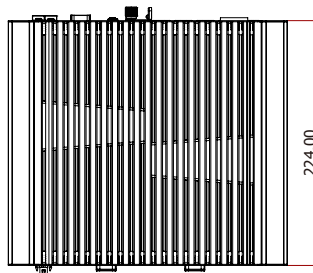
DIMENSIONS



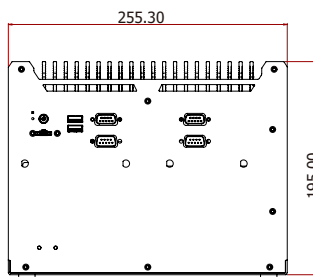
Front View



Left View

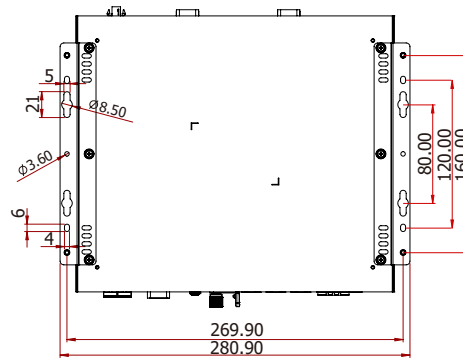
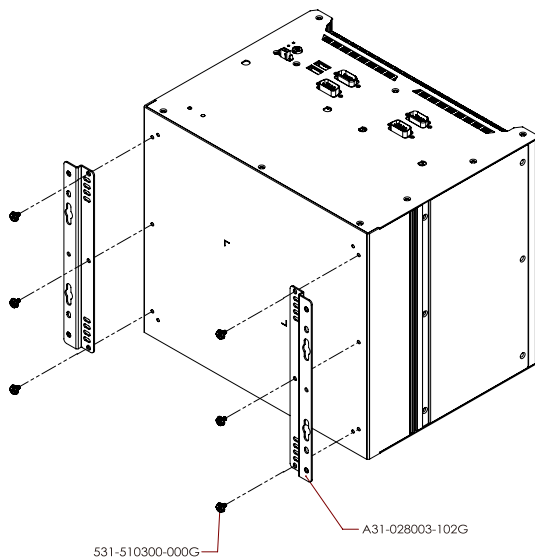


Right View



Rear View

WALL MOUNTING



SPECIFICATION

SYSTEM	Processor	8th/9th Generation Intel® Core™ Processors, LGA 1151 Intel® Core™ i7-9700TE , Octa Cores, 12M Cache, up to 3.8 GHz, 35W Intel® Core™ i5-9500TE , Hexa Cores, 9M Cache, up to 3.6 GHz), 35W Intel® Core™ i3-9100TE, Quad Cores, 6M Cache, up to 3.2 GHz, 35W Intel® Core™ i7-8700T Processor, Hexa Core, 12M Cache, 2.4GHz (4GHz), 35W Intel® Core™ i5-8500T Processor, Hexa Core, 9M Cache, 2.1GHz (3.5GHz), 35W Intel® Core™ i3-8100T Processor, Quad Core, 6M Cache, 3.1GHz, 35W Intel® Pentium® Processor G5400T, Dual Core, 4M Cache, 3.1GHz, 35W Intel® Celeron® Processor G4900T, Dual Core, 2M Cache, 3.1GHz, 35W	
	Chipset	Intel® Q370 Chipset	
	Memory	Two 260-pin DDR4 2400/2666MHz SODIMM up to 64GB	
	BIOS	AMI SPI 128Mbit	
	GRAPHICS	Controller	Intel® HD Graphics
	Feature	OpenGL up to 5.0, DirectX 11, OpenCL 2.1 HW Decode: HEVC/H.265, H.264, M/JPEG, MPEG2, VC1/WMV9, VP8 (8-bit), VP9 (10-bit) HW Encode: HEVC/H.265, M/JPEG, MPEG2, VP8	
	Display	1 x VGA 2 x HDMI/DP++ (auto detection)	VGA: resolution up to 1920x1200 @ 60Hz HDMI: resolution up to 4096x2160 @ 30Hz DP++: resolution up to 4096x2304 @ 60Hz
	Triple Displays	VGA + 2 x HDMI/DP++ (auto detection)	
STORAGE	Interface	2 x 2.5" SATA 3.0 Drive Bay support RAID 0/1	
EXPANSION	Interface	1 x M.2 2230 E key (PCIe/USB 2.0) 1 x M.2 2280 M key (PCIe x4 NVMe/SATA) 1 x M.2 3042/3052 B key (PCIe/USB 3.0) 1 x PCI slot 3 x PCIe	
AUDIO	Audio Codec	ALC888	
ETHERNET	Controller	1 x Intel® I210AT PCIe (10/100/1000Mbps) 1 x Intel® I219LM with iAMT11.0 PCIe (10/100/1000Mbps) (only Core i7/i5 supports iAMT)	
	Interface	RJ-45	
LED	Indicators	1 x Status LED 1 x HDD LED	
FRONT I/O	Serial	4 x RS-232/422/485 (DB-9)	
	USB	2 x USB 2.0 (type A)	
	Buttons	1 x Power button 1 x Reset button	
	Antenna	4 x Antenna hole (WiFi)	
REAR I/O	Ethernet/PoE	-EC543-CS6G86E-Q 2 x GbE (RJ-45) 4 x PoE -EC543-CS6G86-Q 6 x GbE (RJ-45) -EC543-CS6861-Q/EC543-CS98A1-Q 2 x GbE (RJ-45)	
	COM	-EC543-CS6861-Q/EC543-CS6G86E-Q/EC543-CS6G86-Q 2 x RS232 -EC543-CS98A1-Q 3 x RS232/422/485 2 x RS232	
	USB	-EC543-CS6861-Q/EC543-CS6G86E-Q/EC543-CS6G86-Q 4 x USB 3.1(Gen.2) 2 x USB2.0 -EC543-CS98A1-Q 4 x USB 3.1(Gen.2) 4 x USB 3.1(Gen.1)	
	DIO	-EC543-CS6G86E-Q/EC543-CS6G86-Q 16 bits DIO -EC543-CS6861-Q/EC543-CS98A1-Q 8 bits DIO	
	Display	1 x VGA 2 x HDMI/DP++ (auto detection)	
	Audio	1 x Line-out 1 x Mic-in	
WATCHDOG TIMER	Output & Interval	System reset, programmable via software from 1 to 255 seconds	
SECURITY	TPM	TPM 2.0	
POWER	Type	Wide range 9~36V	
	Connector	3-pole terminal block 2-pin power extension switch connector	
OS SUPPORT	OS Support	Windows 10 IoT Enterprise 64 Bit Linux (available upon request)	

SPECIFICATION

ENVIRONMENT	Operating Temperature	-20 to 70°C (SSD or mSATA)
	Storage Temperature	-20 to 85°C
	Relative Humidity	5 to 95% RH (non-condensing)
MECHANICAL	Construction	Metal + Aluminum
	Mounting	Wall mount
	Dimensions (W x H x D)	255.3 x 195 x 224mm
	Weight	5.4 kg
STANDARDS AND CERTIFICATIONS	Shock	Half sine wave 3G, 11ms, 3 shock per axis
	Vibration	IEC68-2-64
	Certifications	CE, FCC Class A

PACKING LIST

1 EC543-CS system unit
1 M.2 slot screws
1 terminal block 3-pole for DC input
1 cable with 2 wire stripped and tinned to DC jack

Assured Systems

Assured Systems is a leading technology company with over 1,500 regular clients in 80 countries, deploying over 85,000 systems to a diverse customer base in 12 years of business. We offer high-quality and innovative rugged computing, display, networking and data collection solutions to the embedded, industrial, and digital-out-of-home market sectors.

US

sales@assured-systems.com

Sales: +1 347 719 4508
Support: +1 347 719 4508

1309 Coffeen Ave
Ste 1200
Sheridan
WY 82801
USA

EMEA

sales@assured-systems.com

Sales: +44 (0)1785 879 050
Support: +44 (0)1785 879 050

Unit A5 Douglas Park
Stone Business Park
Stone
ST15 0YJ
United Kingdom

VAT Number: 120 9546 28
Business Registration Number: 07699660