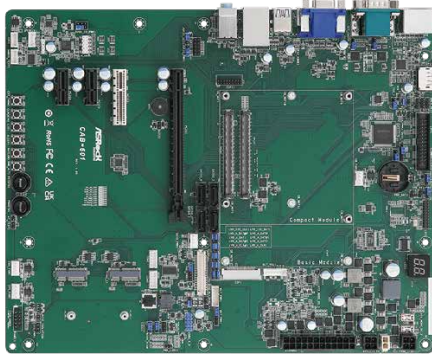


# CAB-601

## COM Express Motherboard



### KEY FEATURES

- COM Express Type 6 Pin Out
- Supports COM Express Basic/Compact/Mini Module
- Supports 3 Digital Display Interfaces (DDI) with HDMI/DisplayPort output
- 1 x PCIe x16, 1 x PCIe x4, 2 x PCIe x1, 4 x USB 3.2 (Gen2), 2 x USB 2.0, 2 x M.2 Key E, 4 x COM, 4 x SATA3
- 1 x Intel 2.5 Gigabit LAN
- ATX PWR (24+4-pin) and 9~24V DC-in (4-pin) co-design

### SPECIFICATIONS

#### Form Factor

Dimensions (LxWxH)	ATX (12-in x 9.6-in x 1.4-in, 30.5 cm x 24.4 cm x 3.6 cm)
--------------------	---

#### Processor System

CPU	By Module
Chipset	By Module
Socket	By Module

#### Expansion Slot

PCIe	1 x PCIe x16 1 x PCIe x4 2 x PCIe x1
M.2	2 x M.2 (Key E, 2230) with PCIe x1, USB 2.0 for Wireless

#### Audio

Interface	Realtek ALC897, High Definition Audio. Line-In / Line-Out / Mic-In
-----------	--

#### Ethernet

Controller/ Speed	1 x slot 10/100/1000/2500 Mbps
Connector	1 x RJ-45

#### Rear I/O

HDMI	1 (HDMI1 optional with DP2)
DisplayPort	3 (DP2 optional with HDMI1)
VGA	1
Ethernet	1 x 2.5 Gigabit LAN
USB	4 x USB 3.2 (Gen2)
Audio	3 (Mic-in, Line-in, Line-out)
COM	COM1, COM2 (RS-232/422/485)
PS2	1 x PS/2

#### Internal Connector

USB	2 x USB 2.0 (1 x 2.54 pitch header)
COM	COM3, COM4 (RS-232)
Parallel	1
GPIO	4 x GPI, 4 x GPO
LVDS	1
eDP	1
SATA PWR Output	1
Speaker Header	1

#### Storage

SATA	4 x SATA3 (6Gb/s)
------	-------------------

#### Watchdog Timer

Output	From Super I/O to drag RESETCON#
Interval	256 Segments, 0, 1, 2, ...255sec

#### Power Requirements

Input PWR	ATX PWR (24+4-pin) and 9~24V DC-in (4-pin) co-design
Power On	AT/ATX Supported - AT : Directly PWR on as power input ready - ATX : Press button to PWR on after power input ready

#### Environment

Operating Temp	0°C - 60°C
Storage Temp	-40° C - 85° C
Operating Humidity	5% - 90%
Storage Humidity	5% - 90%

## Assured Systems

Assured Systems is a leading technology company with over 1,500 regular clients in 80 countries, deploying over 85,000 systems to a diverse customer base in 12 years of business. We offer high-quality and innovative rugged computing, display, networking and data collection solutions to the embedded, industrial, and digital-out-of-home market sectors.

### US

[sales@assured-systems.com](mailto:sales@assured-systems.com)

Sales: +1 347 719 4508  
Support: +1 347 719 4508

1309 Coffeen Ave  
Ste 1200  
Sheridan  
WY 82801  
USA

### EMEA

[sales@assured-systems.com](mailto:sales@assured-systems.com)

Sales: +44 (0)1785 879 050  
Support: +44 (0)1785 879 050

Unit A5 Douglas Park  
Stone Business Park  
Stone  
ST15 0YJ  
United Kingdom

VAT Number: 120 9546 28  
Business Registration Number: 07699660