



NPD1569
15.6" FHD IP65 Sunlight Readable Multi-Touch Marine Display

NAVPIXEL NPD1569, the high-performance, rugged touch monitor, is specially engineered to survive from the most demanding working environment. Housed in a milled billet aluminum case, the slim-profile NAVPIXEL NPD1569 is light weight and watertight. The front-mounted sunlight readable touch screen makes the industrial rugged monitor vividly and user-friendly. In addition, the high power efficiency and low heat design guarantee the stability and longevity required for mission critical deployment.

Features:

- 1800 nits Sunlight Readable LCD
- Long Life, Low Power Consumption LED Backlight
- Rotary and push knob (OSD MENU)
- Wide Operating Temperature
- Advanced Optical Bonding (AOT)
- High Shock & Vibration Resistance
- Projected Capacitive Multi-Touch Support
- Full Flat Design
- IP65 Facial Waterproof
- Isolation Power 9-36V DC Input

Application:

- Marine



Specifications

V1

| | |
|----------------------------------|--|
| Model Number | NPD1569 |
| Description | 15.6" FHD IP65 Sunlight Readable Multi-Touch Marine Display |
| Backlight | LED Backlight |
| Active Display Area | 344.16 x 193.59mm |
| Brightness | 1800 cd/m ² |
| Resolution | 1920x1080 (FHD) |
| Aspect ratio | 16 : 9 |
| Contrast Ratio | 1200:1 |
| Pixel Pitch (mm) | 0.17925(H) x 0.17925(V) |
| Pixel per inch (PPI) | 141 |
| Viewing Angle | 170°(H),170°(V) |
| Display Color | 16.2M |
| Response Time | 25ms |
| Inputs | VGAX1, DVI-Dx1, HDM1x1, DPx1, Compositex1, RS232x1, USBx1 |
| Mechanical | |
| IP Rating | Facial waterproof to IP65 standards when console mounted. |
| Construction | Rugged SPCC Chassis |
| Mounting | Panel (Flush) mount, VESA mount |
| Dimension (mm) | 393.9(W)x285(H)x61.2(D) |
| Net Weight | 5.2Kg |
| Power | |
| Voltage | DC Input Voltage: DC 9~36V |
| Power Consumption | 32W |
| Environmental | |
| Operating Temperature | -30°C~80°C |
| Non-Operating Temperature | -30°C~85°C |
| Certification | Designed to meet CE / FCC Class A |
| Marine Type Approval | |

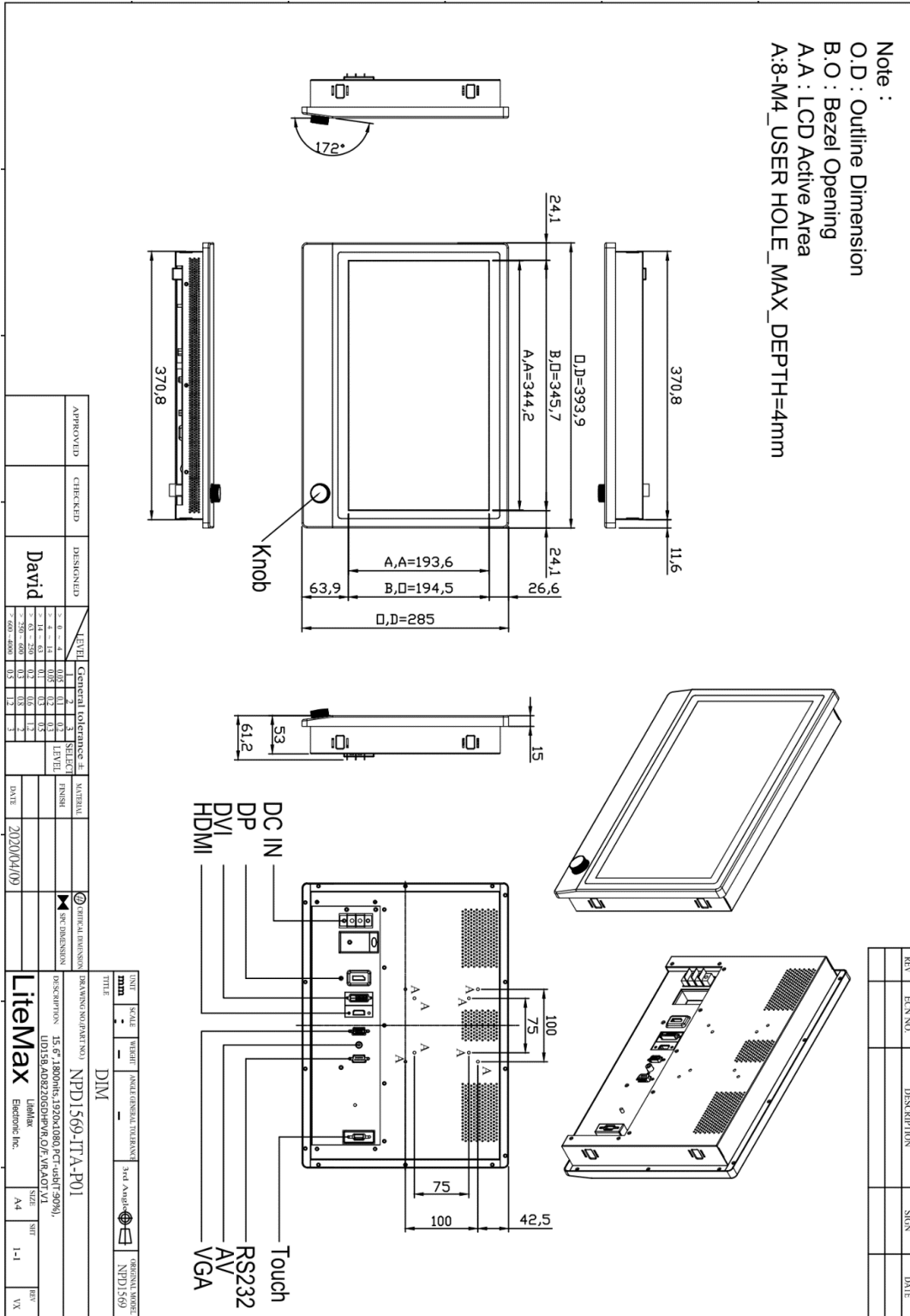
*Specifications are subject to change without notice.
All brands or product names are trademarks or registered trademarks of their respective companies.*

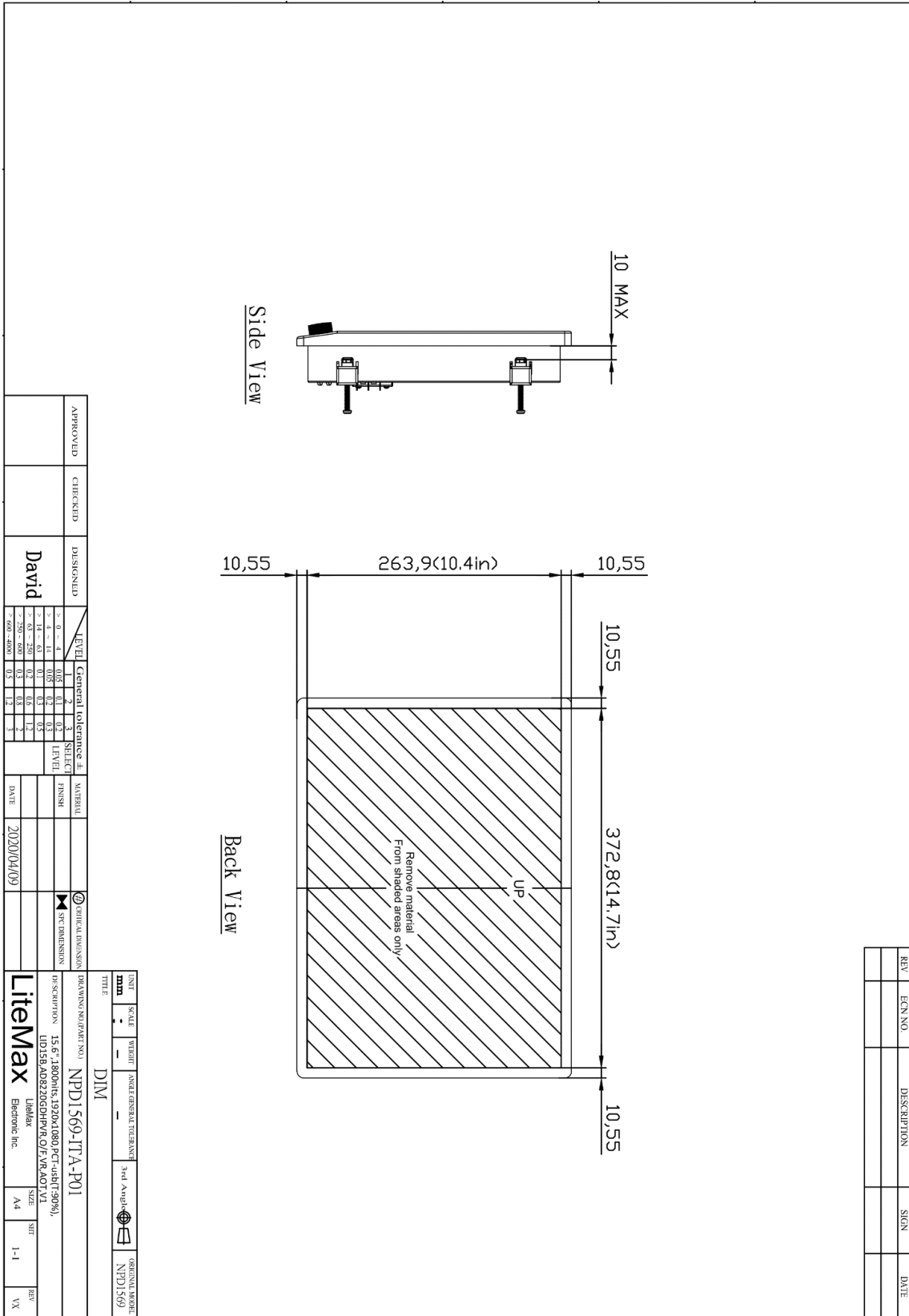


Mechanical Drawing

Outline Dimensions

Unit:mm







Ordering Information

| Part Number | Description |
|-----------------|---|
| NPD1569-ITA-P01 | 15.6",1800nits,1920x1080,PCT-usb(T:90%),LID15B,AD8220GDHPVR,O/F,VR,AOT,V1 |
| | |

Optional Accessories

| Part Number | Description |
|-------------------------|--|
| 112615315401 x (4) | Metal,SPCC,NPS,1531,Lock,V0,P |
| 214032121101 x (4) | Screw,M4,32mm,Round,Ni,P |
| 460100002101 x (4) | Fixture,other,MP-4,V0,P |
| 980000560010 (Optional) | SET,OTHER,ADAPTER REWORK.60W KPA-060F WITH Y TYPE.TERMINAL,P |
| 810618301010 (Optional) | CABLE.POWER.AC.1830mm USA type |
| 810618301090 (Optional) | CABLE.POWER.AC,1830mm Europe type |
| 810618301050 (Optional) | CABLE.POWER.AC.1830mm UK type |
| 810618301170 (Optional) | CABLE.POWER.AC,1830mm Australia type |
| 810618301030 (Optional) | CABLE.POWER.AC.1830mm Japan type |

Assured Systems

Assured Systems is a leading technology company with over 1,500 regular clients in 80 countries, deploying over 85,000 systems to a diverse customer base in 12 years of business. We offer high-quality and innovative rugged computing, display, networking and data collection solutions to the embedded, industrial, and digital-out-of-home market sectors.

US

sales@assured-systems.com

Sales: +1 347 719 4508
Support: +1 347 719 4508

1309 Coffeen Ave
Ste 1200
Sheridan
WY 82801
USA

EMEA

sales@assured-systems.com

Sales: +44 (0)1785 879 050
Support: +44 (0)1785 879 050

Unit A5 Douglas Park
Stone Business Park
Stone
ST15 0YJ
United Kingdom

VAT Number: 120 9546 28
Business Registration Number: 07699660