



Industrial Solutions Partner!

DLF0868 / DLH0868

8.4" TFT LCD, LED Backlight 1600nits, SVGA(800x600)

8.4" TFT LCD panel, built-in 1600 nits high bright for sunlight readable LCD display, high transmittance color filter, high transmission polarizing plates, Low Power Consumption, suitable for kiosk, advertising, POS, marine, transportation, gaming, studio display, gas pump.

Key Features

- Sunlight Readable
- LED Backlight
- High Shock & Vibration Resistance
- Low Power Consumption
- High Uniformity
- Low EMI Noise
- Wide Dimming
- Life Expectancy
- Operation Temperature: -20°C ~ 70 °C



Specifications

Preliminary

Model No.	DLF0868	DLH0868
Description	8.4" TFT LCD, LED Backlight 1600 nits, SVGA	
Display Area (mm)	170.4(H) x 127.8(V)	
Brightness	1600 cd/m ²	
Resolution	SVGA (800 x 600)	
Contrast Ratio	600 : 1	
Pixel Pitch (mm)	0.213 x 0.213	
Viewing Angle	160°(H), 140°(V)	
Display Colors	16.2M / 262K	
Response Time (Typical)	35 ms	
Sync	LVDS	
Power Consumption	6.8W	
Dimensions (mm)	203.0(W) x 142.5(H) x 5.7(D)	
Weight (Net)	0.2Kg	
LED Driving Board	LID08	
Control Board (Optional)	<input type="checkbox"/> AD5621GA <input type="checkbox"/> AD5621GD <input type="checkbox"/> AD2662GDVAR	
<input type="checkbox"/> AD5621GA	VGA+Audio	
<input type="checkbox"/> AD5621GD	VGA+DVI	
<input type="checkbox"/> AD2662GDVAR	VGA+DVI (Optional S-Video/ Component / Audio)	
F / R Control Button	<input type="checkbox"/> 5 Key <input type="checkbox"/> 4 Key	
<input type="checkbox"/> 5 Key	Power Switch, Menu, Select (+,-), Auto	
<input type="checkbox"/> 4 Key	Power Switch, Menu, Select (+,-),	
OSD Menu	Brightness, Contrast, H/V Position, Color, Phase, Clock...	
Optional	<input type="checkbox"/> AOT <input type="checkbox"/> Touch Screen	

Specifications are subject to change without notice.
All brands or product names are trademarks or registered trademarks of their respective companies.

DLF= Panel+LED Driving Board

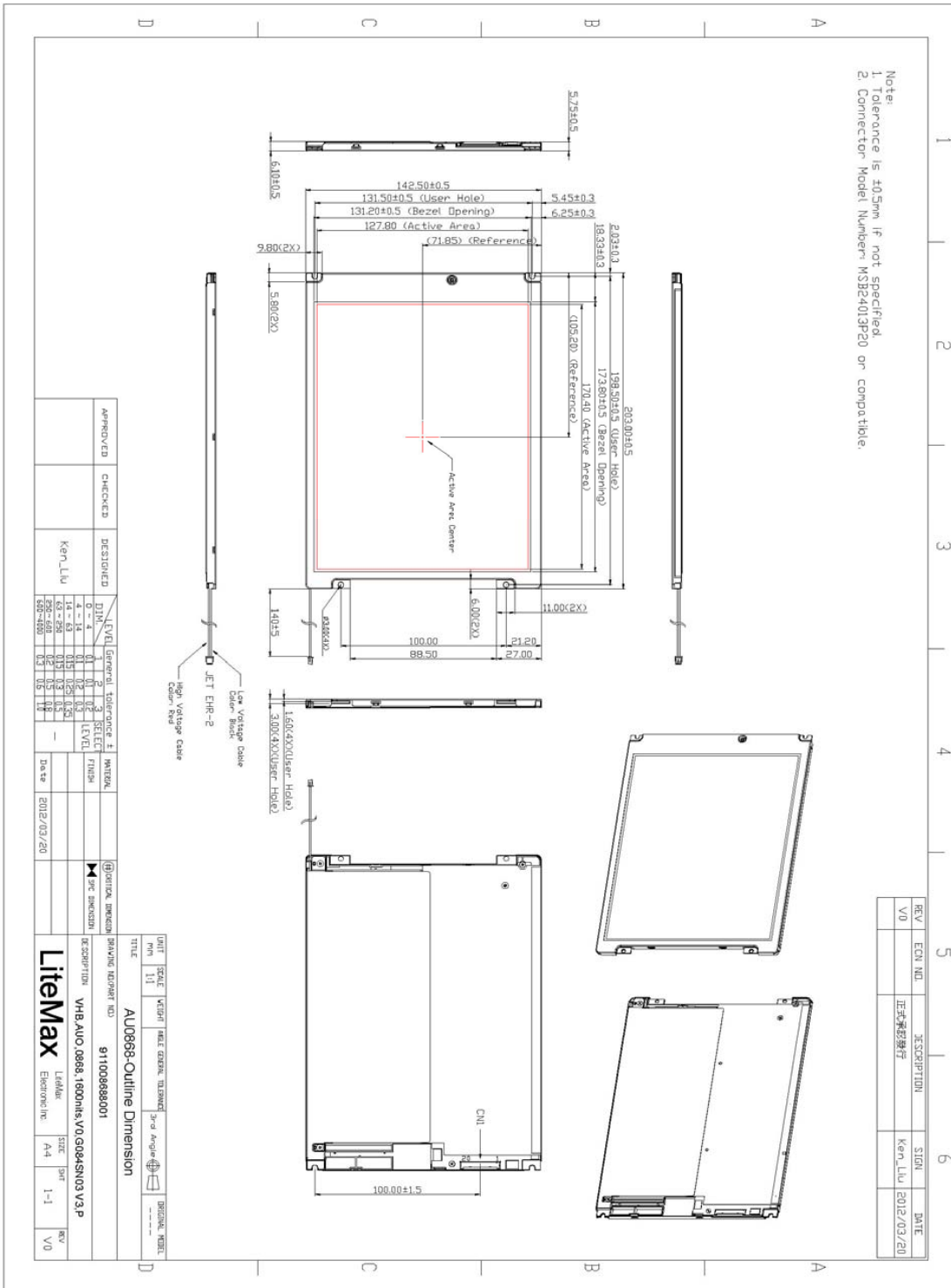
DLH= Panel+LED Driving Board+Control Board



Mechanical Drawing

Outline Dimensions

Unit:mm





Industrial Solutions Partner!

Ordering Information

Model Name	Description
DLF0868-ENN-A01	8.4",1600nits,SVGA, LID08,V01
DLH0868-ENN-A01	8.4",1600nits,SVGA, LID08,AD5621GA,V01
DLH0868-ENN-B01	8.4",1600nits,SVGA, LID08,AD5621GD,V01

Optional Accessories

Part Number	Description
810618301010	CABLE.POWER.AC.1830mm USA type
810618301090	CABLE,POWER,AC,1830mm Europe type
810618301050	CABLE.POWER.AC.1830mm UK type
810618301170	CABLE.POWER,AC,1830mm Australia type
810618301030	CABLE.POWER.AC.1830mm Japan type

Assured Systems

Assured Systems is a leading technology company with over 1,500 regular clients in 80 countries, deploying over 85,000 systems to a diverse customer base in 12 years of business. We offer high-quality and innovative rugged computing, display, networking and data collection solutions to the embedded, industrial, and digital-out-of-home market sectors.

US

sales@assured-systems.com

Sales: +1 347 719 4508
Support: +1 347 719 4508

1309 Coffeen Ave
Ste 1200
Sheridan
WY 82801
USA

EMEA

sales@assured-systems.com

Sales: +44 (0)1785 879 050
Support: +44 (0)1785 879 050

Unit A5 Douglas Park
Stone Business Park
Stone
ST15 0YJ
United Kingdom

VAT Number: 120 9546 28
Business Registration Number: 07699660