



Industrial Solutions Partner!

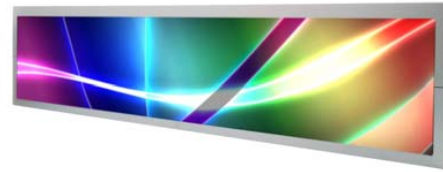
SSF2845/SSH2845-E V3

28" Resizing LCD, 1000 nits LED backlight, 1920x357 ultra wide aspect ratio 16:3

SSF2845/SSH2845-E V3 is an innovative ultra-wide, sunlight readable, LED backlight LCD display. It provides LCD panel with specific ratios for digital signage, public transportation, exhibition hall, department store, vending machine and industrial applications. Incorporating with A.D. control board and backlight design, it is high brightness and sunlight readable panel, can display high-quality video with energy-efficient.

Key Features

- Resizing LCD
- Ultra Wide Screen (16 : 3)
- Sunlight Readable
- LED Backlight
- High Brightness 1000 nits
- Low Power Consumption
- Wide Dimming
- Life Expectancy (70,000hrs)
- Wide Viewing Angle



Specifications

V1

Model No.	SSF2845/SSH2845-E V3
Description	28" Resizing LCD, 1000 nits LED backlight, 1920x357
Display Area	698.4 x 129.8 mm
Brightness	1000 cd/m ²
Resolution	1920 x 357
Aspect Ratio	16 : 3
Contrast Ratio	6500:1
Pixel Pitch (mm)	0.3637 x 0.3637
Pixel Pre Inch (PPI)	69.7
Viewing Angle	178°(H), 178°(V)
Display Colors	16.7M
Response Time (Typical)	6.5 ms
Sync	LVDS
Power Consumption	30W/35W
Dimensions (mm)	735.4 x 170.5 x 18
Weight (Net)	2.1 Kg /2.3 kg
LED Driving Board	LID28A
Control Board (Optional)	AD2662GD / AD2662GDVAR
<input type="checkbox"/> AD2662GD	VGA + DVI
<input type="checkbox"/> AD2662GDVAR	VGA + DVI (Optional AV/ S-Video / Component / Audio)
<input type="checkbox"/> Others	
F / R Control Button	5 Key / 4 Key
<input type="checkbox"/> 4 Key	Power Switch, Menu, Select (+,-),
<input type="checkbox"/> 5 Key	Power Switch, Menu, Select (+,-),Auto
OSD Menu	Brightness, Contrast, H/V Position, Color, Phase, Clock...
Optional	<input type="checkbox"/> Touch Screen

Specifications are subject to change without notice.
All brands or product names are trademarks or registered trademarks of their respective companies.

SSF= Panel+ LED Driving Board
SSH= Panel+ LED Driving Board + Control Board

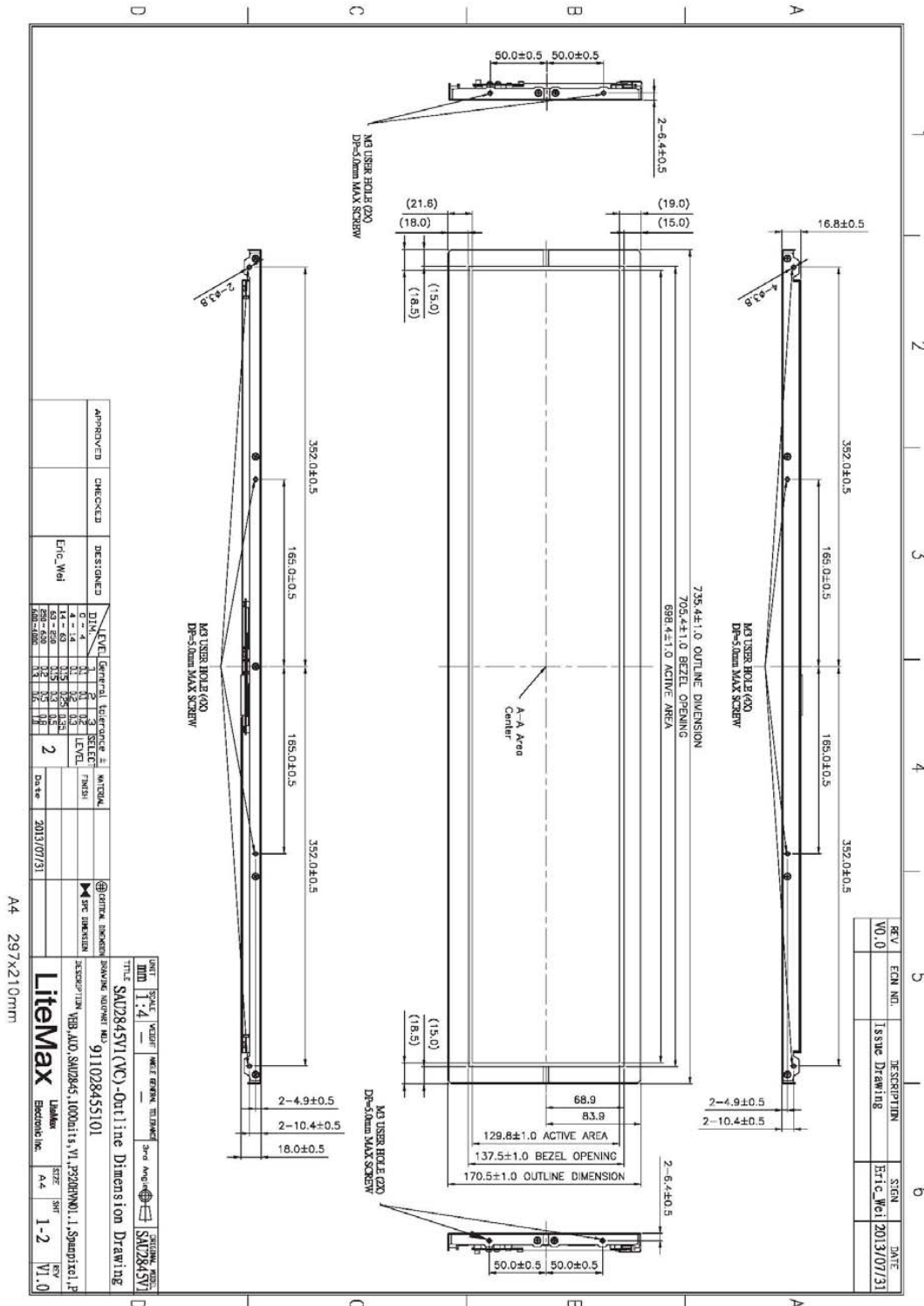


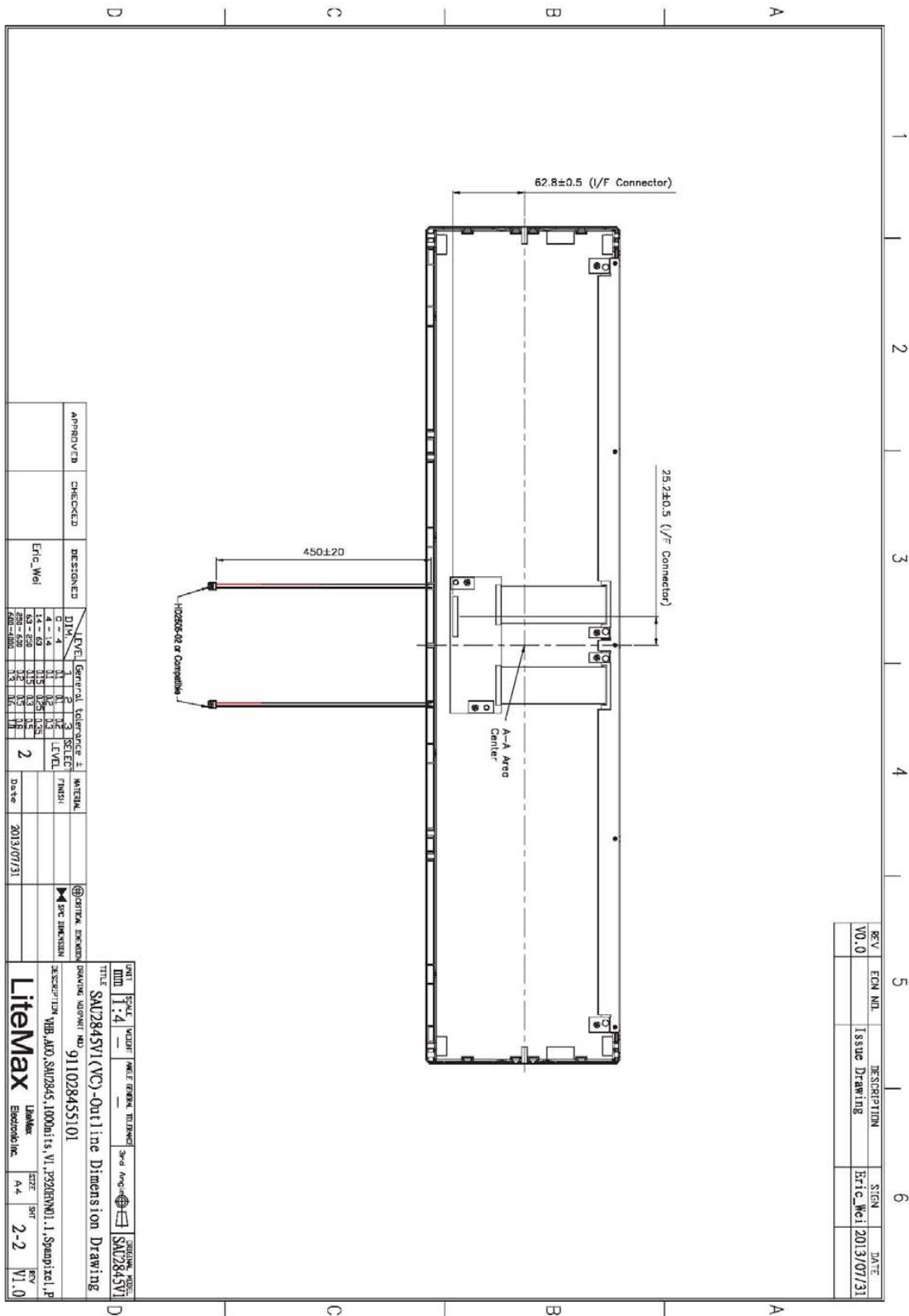
Industrial Solutions Partner!

Mechanical Drawing

Outline Dimensions

Unit: mm





APPROVED	CHECKED	DESIGNED	DRAWN	LEVEL	General Tolerance ±	FINISH	DATE
		Eric Wei		1	0.1		2013/07/31
				2	0.15		
				3	0.2		
				4	0.25		
				5	0.3		
				6	0.4		
				7	0.5		
				8	0.6		
				9	0.7		
				10	0.8		
				11	0.9		
				12	1.0		

A4 297x210mm

FIG. NO.	1-4	REV.	1	DATE	2013/07/31
TITLE	SAU2845V1(VCY)-Outline Dimension Drawing				
DRAWING NUMBER	91102845S101				
DESCRIPTION	VIB. ADJ. SAU2845-1000d1's V1.1P32BEN01.1, Stamp incl. P				
DESIGNER	Eric Wei				
CHECKER	Eric Wei				
DATE	2013/07/31				
SCALE	1:1				
SIZE	A4				
REV	2-2				
DATE	V1.0				

REV	EQ. NO.	DESCRIPTION	DATE
V0.0		Issue Drawing	2013/07/31



Industrial Solutions Partner!

Ordering Information

Model Name	Description
SSF2845-ENN-A21	28",1000nits,1920*357,LID28A.V03(4 in 1)
SSH2845-ENN-G21	28",1000nits,1920*357,LID28A.AD2662GD,DC 12V input.V03(4 in 1)

Optional Accessories

Part Number	Description
840612051210 (Optional)	ADAPTER,AC/DC,12V/5.4A,65W,Atech OEM A065112-TDx.4P SLIDING CAP,P
810618301010 (Optional)	CABLE.POWER.AC.1830mm.(US Type).3PIN PLUG TO SOCKET.SVT(SPT-2)18AWG 3C BLACK,P.
810618301090 (Optional)	CABLE,POWER,AC,1830mm.(EU Type) 3PIN PLUG TO.SOCKET,H05VV-F 3G.0.75MMSQ BLACK,P
810618301050 (Optional)	CABLE,POWER,AC,1830mm.UK(FUSE) 3PIN PLUG TO.SOCKET,H05VV-F 3C(3G) 0.75MMSQ BLACK,P
810618301170 (Optional)	CABLE.POWER,AC,1830mm. (AU Type) 3PIN PLUG TO 2P SOCKET.LTSA 0.75MMSQ BLACK,P
810618301030 (Optional)	CABLE.POWER.AC.1830mm.(JP Type).2PIN PLUG Y TERMINAL TO. SOCKET.VCTF 3C 0.75MMSQ BLACK,P

Assured Systems

Assured Systems is a leading technology company with over 1,500 regular clients in 80 countries, deploying over 85,000 systems to a diverse customer base in 12 years of business. We offer high-quality and innovative rugged computing, display, networking and data collection solutions to the embedded, industrial, and digital-out-of-home market sectors.

US

sales@assured-systems.com

Sales: +1 347 719 4508
Support: +1 347 719 4508

1309 Coffeen Ave
Ste 1200
Sheridan
WY 82801
USA

EMEA

sales@assured-systems.com

Sales: +44 (0)1785 879 050
Support: +44 (0)1785 879 050

Unit A5 Douglas Park
Stone Business Park
Stone
ST15 0YJ
United Kingdom

VAT Number: 120 9546 28
Business Registration Number: 07699660