



Industrial Solutions Partner!

**SSF/SSH1033**

**9.98" Resizing LCD Display, Brightness is 700 nits, LED backlight, 800x200 ultra wide aspect ratio 16:3**

SSF/SSH1033 is an innovative ultra-wide, LED backlight LCD module. It provides LCD panel with specific ratios for digital signage, public transportation, exhibition hall, department store, and vending machine applications.

**Key Features**

- Resizing LCD
- Ultra Wide Screen (16 : 3)
- LED Backlight
- High Brightness 700nits
- Low Power Consumption
- High Uniformity
- Wide Dimming



**Specifications**

V1

Model No.	SSF1033	SSH1033
Description	9.98" Resizing LCD Display, 700nits, LED backlight, 800x200	
Display Area	246.6x 61.5 mm	
Brightness	700nits	
Resolution	800 x 200	
Aspect Ratio	16 : 3	
Contrast Ratio	600:1	
Pixel Pitch (mm)	0.3075 x 0.3075	
Viewing Angle	160°(H), 135°(V)	
Display Colors	262K	
Response Time (Typical)	35 ms	
Power Consumption	3.8W / 9.6W	
Dimensions (mm)	279x87.1x9mm	
Weight (Net)	0.25Kg / 0.38Kg	
LED Driving Board	On module	
Control Board (Optional)	<input type="checkbox"/> AD2662GVA	
<input type="checkbox"/> AD2662GVA	VGA+S-Video+Component+Audio	
<input type="checkbox"/> AD2662GVA + (DVI/ RS232 )	VGA+S-Video+Component+Audio (Optional DVI/ RS232)	
F / R Control Button	<input type="checkbox"/> 4 Key	
<input type="checkbox"/> 4 Key	Power Switch, Menu, Select (+,-),	
OSD Menu	Brightness, Contrast, H/V Position, Color, Phase, Clock...	
Optional	<input type="checkbox"/> AOT <input type="checkbox"/> Touch Screen	

Specifications are subject to change without notice.

All brands or product names are trademarks or registered trademarks of their respective companies.

SSF= Panel+ LED Driving Board

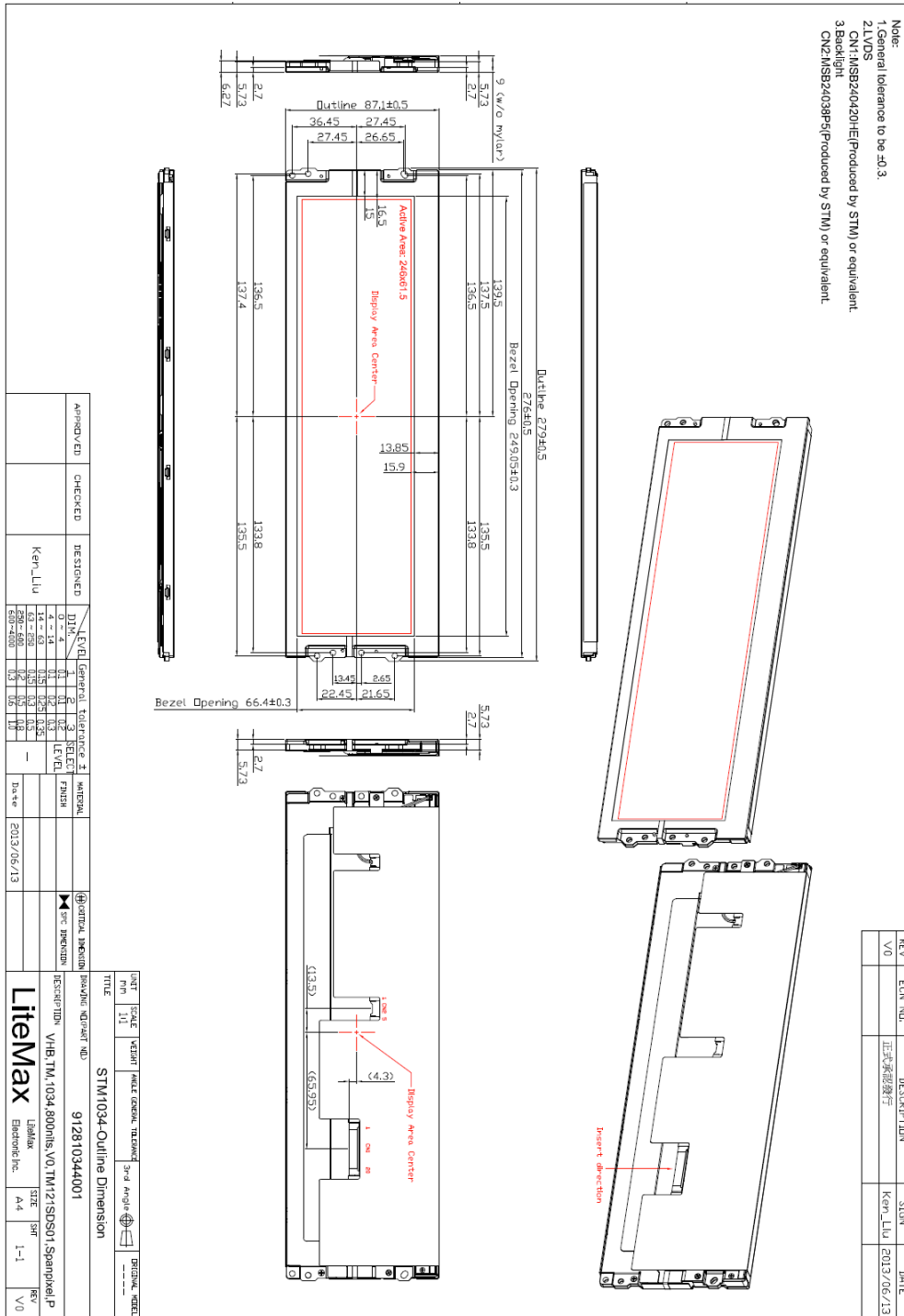
SSH= Panel+ LED Driving Board + Control Board



**Mechanical Drawing**

**Panel Outline Dimensions**

Unit: mm





*Industrial Solutions Partner!*

**Ordering Information**

Part Number	Description
<b>SSF1033-ENN-A01</b>	9.9",700nits,800*200,LID on module,5 in 1,V1
<b>SSH1033-ENN-G01</b>	9.9",700nits,800*200,AD2662GVA,5 in 1,V1

**Optional Accessories**

Part Number	Description
<b>840612031100</b>	<b>ADAPTER.12V.3.33A.40W,PAA040F,P</b>
<b>810618301010</b>	<b>CABLE.POWER.AC.1830mm USA type</b>
<b>810618301090</b>	<b>CABLE,POWER,AC,1830mm Europe type</b>
<b>810618301050</b>	<b>CABLE.POWER.AC.1830mm UK type</b>
<b>810618301170</b>	<b>CABLE.POWER,AC,1830mm Australia type</b>
<b>810618301030</b>	<b>CABLE.POWER.AC.1830mm Japan type</b>

## Assured Systems

Assured Systems is a leading technology company with over 1,500 regular clients in 80 countries, deploying over 85,000 systems to a diverse customer base in 12 years of business. We offer high-quality and innovative rugged computing, display, networking and data collection solutions to the embedded, industrial, and digital-out-of-home market sectors.

### US

[sales@assured-systems.com](mailto:sales@assured-systems.com)

Sales: +1 347 719 4508  
Support: +1 347 719 4508

1309 Coffeen Ave  
Ste 1200  
Sheridan  
WY 82801  
USA

### EMEA

[sales@assured-systems.com](mailto:sales@assured-systems.com)

Sales: +44 (0)1785 879 050  
Support: +44 (0)1785 879 050

Unit A5 Douglas Park  
Stone Business Park  
Stone  
ST15 0YJ  
United Kingdom

VAT Number: 120 9546 28  
Business Registration Number: 07699660