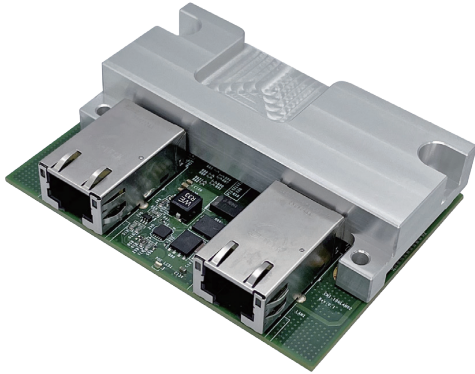


CMI-10GLAN05

CMI Module with 2x Intel 10GbE LAN, RJ45 Port



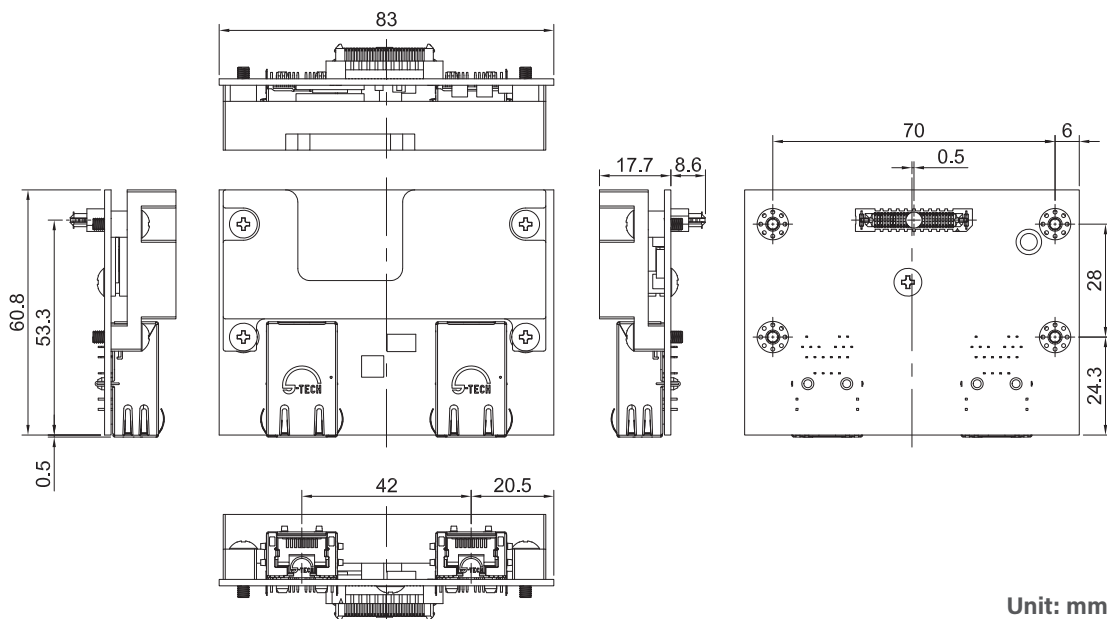
- CMI (Combined Multiple I/O) Technology
- Intel Ethernet Controller X550-AT2
- Support 10GbE Data Rate



Specifications

Interface	• CMI (Combined Multiple I/O) Interface
Ethernet Port	• 2 x Intel® X550-AT2 Ethernet Ports
Connector Type	• RJ45
Data Rate Per Port	• 10/5/2.5/1GbE
Jumbo Frames Supported	• Yes
Teaming Supported	• Yes
Dimension (W x D x H)	• 83 x 60.8 x 17.7 mm

Dimensions



Unit: mm

Ordering Information

Available Models

Model No.	Description
CMI-10GLAN05-R10	CMI Module with 2x Intel 10GbE LAN, RJ45 Port

Package Checklist

• CMI Module x1	• Thermal Pad Pack x1
• Heatsink x1	• Screw Pack x1

Compatible List

Model No.	CMI-10GLAN05
DX-1200	V

Assured Systems

Assured Systems is a leading technology company with over 1,500 regular clients in 80 countries, deploying over 85,000 systems to a diverse customer base in 12 years of business. We offer high-quality and innovative rugged computing, display, networking and data collection solutions to the embedded, industrial, and digital-out-of-home market sectors.

US

sales@assured-systems.com

Sales: +1 347 719 4508
Support: +1 347 719 4508

1309 Coffeen Ave
Ste 1200
Sheridan
WY 82801
USA

EMEA

sales@assured-systems.com

Sales: +44 (0)1785 879 050
Support: +44 (0)1785 879 050

Unit A5 Douglas Park
Stone Business Park
Stone
ST15 0YJ
United Kingdom

VAT Number: 120 9546 28
Business Registration Number: 07699660