

Devolinx STE-501C/502C

1/2-Port Ethernet Serial Server

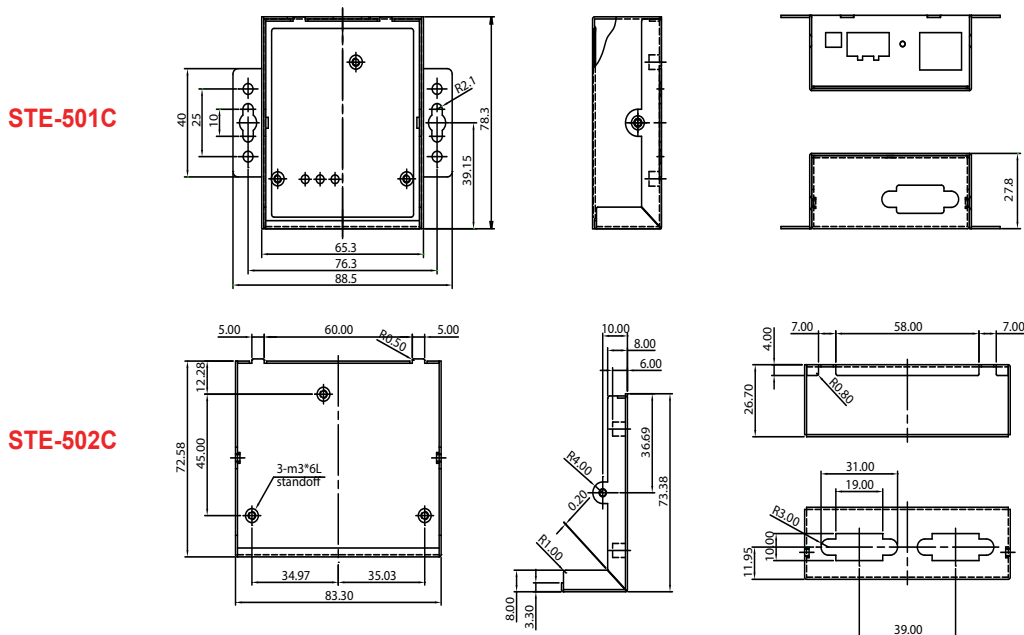


Features

- ▶ Rugged Metal Case with DIN-Rail / Wall-Mount
- ▶ 15 KV ESD Protection for Serial Signals
- ▶ 10/100Mbps Fast Ethernet Full Duplex Auto Negotiation
- ▶ Supports Multiple Link Mode with TCP Server/Client, UDP, and Virtual COM Mode
- ▶ Monitor, Manage, and Control Industrial Field Devices Remotely
- ▶ Configurable via Built-In Web Server, Serial Console, or Telnet
- ▶ Windows Base Utility for IP Configuration
- ▶ Compact Size
- ▶ Upgradeable Firmware from Remote-PC via Ethernet



▶ Layout / Dimensions (unit = mm)



► Specifications

CPU
16-bit Embedded CPU

Flash Memory
512 KBytes

SDRAM
512 KBytes

EEPROM
512 Bytes

Network Interface
10/100Mbps Fast Ethernet

Network Protocol
TCP/IP, UDP, HTTP, SNMP, ARP, Telnet, ICMP, BOOTP, DHCP

Reset
Built-In Reset Key to Restore Defaults

Serial Interface
RS-232/422/485

Serial Connector
DB9 Male

Serial Communication
Data Rate: 1200 ~ 230400 bps (230Kbps)
Characters: 7 or 8 Data Bits
Parity: None, Even, Odd, Mark, Space
Stop Bits: 1 or 2
Flow Control: Xon/Xoff, RTS/CTS

LED Indicators
LAN, RUN, and COM

Software
Windows OS Based Configuration Utility, Virtual COM Software

Configuration
Web (HTML), Telnet, Serial Console, and Configuration Utility

Power Requirement
9 ~ 30VDC

Power Consumption
3 Watts

Operation Temperature
0° C to 60° C (32° F to 140° F)

Storage Temperature
-20° C to 85° C (-4° F to 185° F)

Operation Humidity
20% to 90% (Non-condensing)

Dimension (W x H x D)
STE-501C: 65 x 80 x 28 mm (2.56 x 3.15 x 1.10 in.)
STE-502C: 85 x 75 x 28 mm (3.35 x 2.95 x 1.10 in.)

Approvals
FCC, CE

Warranty
5-Year Warranty

► Comparison

Model	STE-501C	STE-502C	STE-601C	STW-601C
Number of Ports	1 Port	2 Ports	1 Port	1 Port
Case Design	Commercial	Commercial	Industrial	Industrial
Flash Memory	512KB	512KB	512KB	10MB (2MB for Bootloader)
SDRAM	512KB	512KB	512KB	32MB
Wireless LAN	No	No	No	Yes
Serial Connector	DB9 Male	DB9 Male	DB9 Male 5 Pin Terminal Block 8 Pin Mini-DIN	DB9 Male 5 Pin Terminal Block 8 Pin Mini-DIN

► Ordering Information

STE-501C 1 Port Ethernet Serial Server, RS-232 / 422 / 485, DIN-Rail/Wall-Mountable
STE-502C 2 Port Ethernet Serial Server, RS-232 / 422 / 485, DIN-Rail/Wall-Mountable

*** POWER ADAPTER SOLD SEPARATELY ***

Optional Accessories

PA-STX-US Power Adapter for STE-501C (USA)
PA-STE502-US Power Adapter for STE-502C (USA)
PA-STX-EU Power Adapter for STE-501C (Euro)
PA-STE502-EU Power Adapter for STE-502C (Euro)
DIN-RAIL-KIT DIN Rail Mounting Kit

Aaxeon Technologies

445 Capricorn St.
Brea, CA 92821
USA

Toll-Free: (877) AAXEON5 (229-3665)
Phone: (714) 671-9000
FAX: (714) 671-9944
e-Mail: info@aaxeon.com

aaxeon
www.aaxeon.com

Assured Systems

Assured Systems is a leading technology company with over 1,500 regular clients in 80 countries, deploying over 85,000 systems to a diverse customer base in 12 years of business. We offer high-quality and innovative rugged computing, display, networking and data collection solutions to the embedded, industrial, and digital-out-of-home market sectors.

US

sales@assured-systems.com

Sales: +1 347 719 4508

Support: +1 347 719 4508

1309 Coffeen Ave
Ste 1200
Sheridan
WY 82801
USA

EMEA

sales@assured-systems.com

Sales: +44 (0)1785 879 050

Support: +44 (0)1785 879 050

Unit A5 Douglas Park
Stone Business Park
Stone
ST15 0YJ
United Kingdom

VAT Number: 120 9546 28

Business Registration Number: 07699660