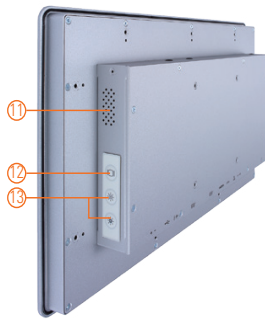
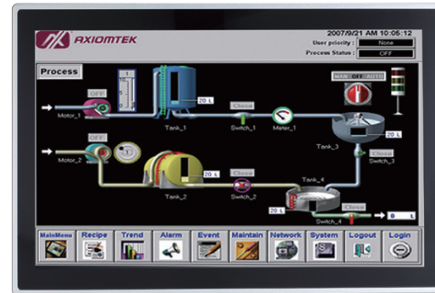


# GOT315WL-845 NEW

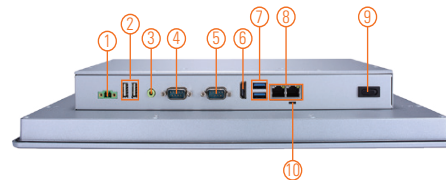
15.6" WXGA TFT Multi-touch Panel Computer with Intel® Pentium® Processor N3710 (0°C to +50°C)

## Features

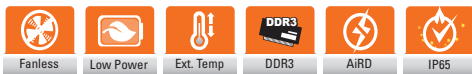
- 15.6" WXGA projected capacitive multi-touch wide screen
- Fanless design with Intel® Pentium® processor N3710
- 2.5" SATA HDD & mSATA
- 3G, WLAN module & antennas (optional)
- 2 GbE LANs, 2 USB 3.0, 2 USB 2.0 and 2 COM
- IP65 aluminum front bezel
- Supports panel mount and optional VESA arm/desktop stand/wall mount
- Adjust RS-232/422/485 setting via BIOS



▲ Rear view



- |                                      |                              |                           |
|--------------------------------------|------------------------------|---------------------------|
| 1. Terminal block for DC power input | 6. HDMI output               | 11. Speaker               |
| 2. USB 2.0 x 2                       | 7. USB 3.0 x 2               | 12. Blacklight switch     |
| 3. Audio (Line-out)                  | 8. Ethernet x 2              | 13. Brightness adjust +/- |
| 4. COM 1 (RS-232/422/485)            | 9. Power switch (ATX)        |                           |
| 5. COM 2 (RS-232)                    | 10. AT/ATX selectable switch |                           |



## Introduction

The GOT315WL-845 adopts a 15.6-inch WXGA LCD and supports Intel® Braswell processor. The Lite rugged industrial panel PC supports low power Intel® Pentium® processor N3710. It also provides two PCI Express Mini Card slots for 3G, wireless network connectivity. This 15.6" multi-touch panel computer is suitable for transportation, heavy-duty industry, smart factory automation, and oil pipe monitoring systems.

### 15.6-inch WXGA LCD with Projected Capacitive Multi-touch

The 15.6" WXGA touch panel PC supports 400 nits brightness, able to display contents in HD resolution. With projected capacitive multi-touch screen, users can operate the device more directly and friendly. The hardness of touch glass surface is up to 7h for anti-scratch purpose.

### WLAN Antenna Supported (optional)

The IP65-rated industrial panel PC, GOT315WL-845, provides two PCI Express Mini Card slots and WLAN antennas for 3G and wireless network connectivity.

## Specifications

Front Bezel	IP65 front bezel	
LCD Panel	Display Type	15.6" WXGA TFT LCD
	Brightness (cd/m <sup>2</sup> )	400 nits
	Resolution	1366 x 768
Main System	CPU	Intel® Pentium® processor N3710 4C @ 1.6 GHz (Braswell)
	Chipset	SoC Integrated
	System Memory	1 x 204-pin DDR3L-1333/1600 SO-DIMM, up to 8GB
	BIOS	AMI UEFI BIOS
	Storage	1 x 2.5" SATA HDD 1 x mSATA
	Watchdog Timer	255 levels, 0 – 255 sec.
	Onboard Graphics	Integrated Intel® HD Graphics

**Specifications**

I/O Connector	1 x RS-232 (COM 2) 1 x RS-232/422/485 (COM 1) 1 x switch for power on/off (ATX) 1 x audio (Line-out) 2 x USB 3.0 2 x USB 2.0 2 x 10/100/1000 Mbps Ethernet (Intel® i217LM & i210AT)
Expansion Interface	1 x full-size PCI Express Mini Card slot with mSATA 1 x full-size PCI Express Mini Card slot with SIM
Touchscreen	Projected capacitive multi-touch
Power Supply	DC version: 24 VDC
Power Consumption	72 W
Dimensions	396.8 mm (15.62") (W) x 59.0 mm (2.3") (D) x 247.1 mm (9.73") (H)
Packing Dimensions	525 mm (20.67") (W) x 186 mm (7.32") (D) x 470 mm (18.51") (H)
Weight (net/gross)	4.5 kg (9.9 lb)/6.5 kg (14.3 lb)
Environment	Operating temperature: 0°C - +50°C (+32°F - +122°F) Relative humidity: 20% - 90% @ +40°C; non-condensing Operation vibration: 1G, 10 - 500 Hz, random for 2.5" SATA HDD
Certificate	CE

**Ordering Information**

GOT315WL-845-PCT-DC	15.6" WXGA TFT fanless touch panel computer with Intel® Pentium® N3710 1.6 GHz quad core processor, projected capacitive multi-touch screen and 24 VDC terminal block connector
---------------------	---

**Optional Accessories**

82231770050E	GOT3177T-834 wall mount kit
50966D45000E	Adaptor 24V 120W, wire only, LTE120ES-S4-1

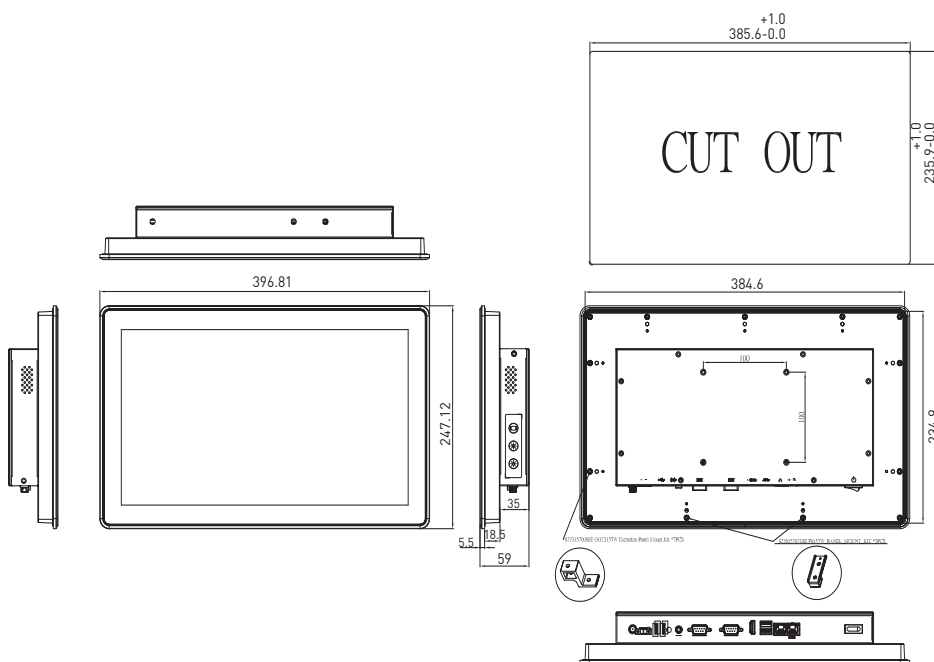
**Optional EOS Installation**

Windows® 10 IoT Enterprise (64-bit)

**Optional OS Installation**

Windows® 10 (64-bit)

**Dimensions**



## Assured Systems

Assured Systems is a leading technology company with over 1,500 regular clients in 80 countries, deploying over 85,000 systems to a diverse customer base in 12 years of business. We offer high-quality and innovative rugged computing, display, networking and data collection solutions to the embedded, industrial, and digital-out-of-home market sectors.

### US

[sales@assured-systems.com](mailto:sales@assured-systems.com)

Sales: +1 347 719 4508  
Support: +1 347 719 4508

1309 Coffeen Ave  
Ste 1200  
Sheridan  
WY 82801  
USA

### EMEA

[sales@assured-systems.com](mailto:sales@assured-systems.com)

Sales: +44 (0)1785 879 050  
Support: +44 (0)1785 879 050

Unit A5 Douglas Park  
Stone Business Park  
Stone  
ST15 0YJ  
United Kingdom

VAT Number: 120 9546 28  
Business Registration Number: 07699660