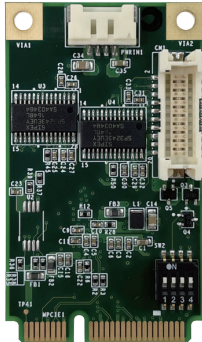


# MEC-COM-M212

Mini-PCIe Module with 2x RS-232 Serial Ports



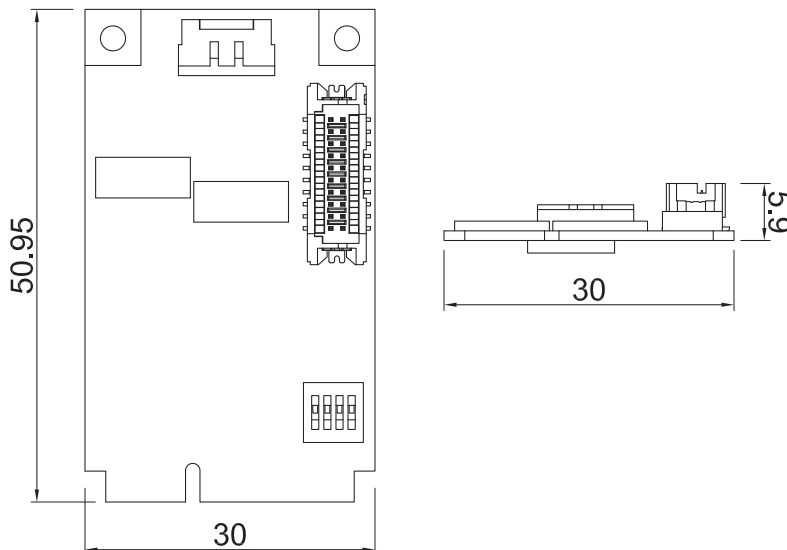
- MEC (Mini PCIe Expansion Card) Technology
- 2x RS-232 Ports Expansion



## Specifications

Serial Port	2x RS-232 Ports
Connector Type	DB9
Baud Rate	Up to 921.6Kbps
Dimension ( W x D x H )	30.00 x 50.95 mm
Operating System	Windows® 10, Windows® 8, Windows® 7
Certification	CE, FCC Class A

## Dimensions



Unit: mm

## Ordering Information

### Available Models

Model No.	Description
MEC-COM-M212-DB9	Mini-PCIe Module with 2x RS-232 Serial Ports, 1x DB9 Cable
MEC-COM-M212-TDB9	Mini-PCIe Module with 2x RS-232 Serial Ports, 1x Thin DB9 Cable

### Package Checklist

- Mini PCIe Card x1
- Power Cable x1
- Standard Full Height Bracket with 2x DB9 Cutout x1
- Quick Installation Guide x1
- RS-232 Signal Cable x1

## Compatible List

Model No.	MEC-COM-M212-DB9	MEC-COM-M212-TDB9
DC-1200	--	V
DE-1002	V	--
DS-1400/1401/1402	V	--
DS-1300/1301/1302	V	--
DS-1200/1201/1202	V	--
DS-1100/1101/1102	V	--
DI-1000	V	--
DI-1100	--	V
DX-1000	--	V
DX-1100	--	V
DX-1200	--	V
GM-1000	--	V
P1000	V	--
P2000	V	--
P2100	--	V
P2200	--	V

## Assured Systems

Assured Systems is a leading technology company with over 1,500 regular clients in 80 countries, deploying over 85,000 systems to a diverse customer base in 12 years of business. We offer high-quality and innovative rugged computing, display, networking and data collection solutions to the embedded, industrial, and digital-out-of-home market sectors.

### US

[sales@assured-systems.com](mailto:sales@assured-systems.com)

Sales: +1 347 719 4508  
Support: +1 347 719 4508

1309 Coffeen Ave  
Ste 1200  
Sheridan  
WY 82801  
USA

### EMEA

[sales@assured-systems.com](mailto:sales@assured-systems.com)

Sales: +44 (0)1785 879 050  
Support: +44 (0)1785 879 050

Unit A5 Douglas Park  
Stone Business Park  
Stone  
ST15 0YJ  
United Kingdom

VAT Number: 120 9546 28  
Business Registration Number: 07699660