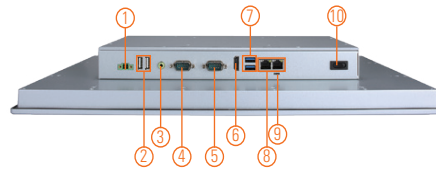
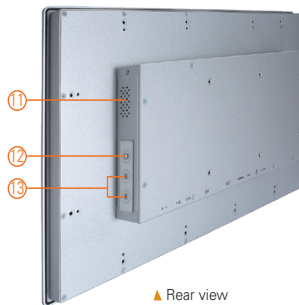
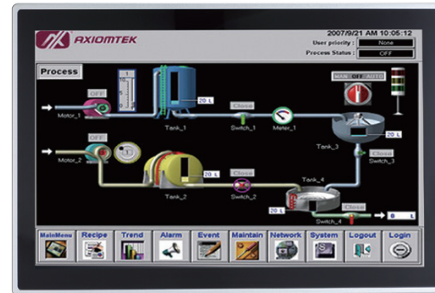


GOT318WL-845

18.5" WXGA TFT Multi-touch Panel Computer with Intel® Pentium® Processor N3710 (0°C to +50°C)

Features

- 18.5" WXGA projected capacitive multi-touch wide screen/ Flat resistive touch (optional)
- Fanless design with Intel® Pentium® processor N3710
- 2.5" SATA HDD & mSATA
- 3G, WLAN module & antennas (optional)
- 2 GbE LANs, 2 USB 3.0, 2 USB 2.0 and 2 COM
- IP65 aluminum front bezel
- Supports panel mount and optional VESA arm/desktop stand/ wall mount
- Adjust RS-232/422/485 setting via BIOS



- | | | |
|--------------------------------------|-----------------------------|---------------------------|
| 1. Terminal block for DC power input | 6. HDMI output | 11. Speaker |
| 2. USB 2.0 x 2 | 7. USB 3.0 x 2 | 12. Backlight switch |
| 3. Audio (Line-out) | 8. Ethernet x 2 | 13. Brightness adjust +/- |
| 4. COM 1 (RS-232/422/485) | 9. AT/ATX selectable switch | |
| 5. COM 2 (RS-232) | 10. Power switch (ATX) | |



Introduction

The GOT318WL-845 adopts a 18.5-inch WXGA LCD and supports Intel® Braswell processor. The Lite rugged industrial panel PC supports low power Intel® Pentium® processor N3710. It also provides two PCI Express Mini Card slots for 3G, wireless network connectivity. This 18.5" multi-touch panel computer is suitable for transportation, heavy-duty industry, smart factory automation, and oil pipe monitoring systems.

18.5-inch WXGA LCD with Projected Capacitive Multi-touch

The 18.5" WXGA touch panel PC supports 250 nits brightness, able to display contents in HD resolution. With projected capacitive multi-touch screen, users can operate the device more directly and friendly. The hardness of touch glass surface is up to 7h for anti-scratch purpose.

WLAN Antenna Supported (optional)

The IP65-rated industrial panel PC, GOT318WL-845, provides two PCI Express Mini Card slots and WLAN antennas for 3G and wireless network connectivity.

Specifications

Front Bezel	IP65 front bezel	
LCD Panel	Display Type	18.5" WXGA TFT LCD
	Brightness (cd/m ²)	250 nits
	Resolution	1366 x 768
Main System	CPU	Intel® Pentium® processor N3710 4C @ 1.6 GHz (Braswell)
	Chipset	SoC Integrated
	System Memory	1 x 204-pin DDR3L-1333/1600 SO-DIMM, up to 8GB
	BIOS	AMI UEFI BIOS
	Storage	1 x 2.5" SATA HDD 1 x mSATA
	Watchdog Timer	255 levels, 0 – 255 sec.
	Onboard Graphics	Integrated Intel® HD Graphics

Specifications

I/O Connector	1 x RS-232 (COM 2) 1 x RS-232/422/485 (COM 1) 1 x switch for power on/off (ATX) 1 x audio (Line-out) 2 x USB 3.0 2 x USB 2.0 2 x 10/100/1000 Mbps Ethernet (Intel® i217LM & i210AT)
Expansion Interface	1 x full-size PCI Express Mini Card slot with mSATA 1 x full-size PCI Express Mini Card slot with SIM
Touchscreen	Projected capacitive multi-touch / Flat resistive touch (optional)
Power Supply	DC version: 24 VDC
Power Consumption	48 W
Dimensions	460.8 mm (18.11") (W) x 58.5 mm (2.3") (D) x 285 mm (11.22") (H)
Packing Dimensions	600 mm (23.58") (W) x 195 mm (7.67") (D) x 500 mm (19.68") (H)
Weight (net/gross)	5.8 kg (12.8 lb)/8.2 kg (18.1 lb)
Environment	Operating temperature: 0°C – +50°C (+32°F – +122°F) Relative humidity: 20% – 90% @ +40°C; non-condensing Operation vibration: 1G, 10 – 500 Hz, random for 2.5" SATA HDD
Certificate	CE

Ordering Information

GOT318WL-845-PCT-DC	18.5" WXGA TFT fanless touch panel computer with Intel® Pentium® N3710 1.6 GHz quad core processor, projected capacitive multi-touch screen and 24 VDC terminal block connector
---------------------	---

Optional Accessories

82231770050E	GOT3177T-834 wall mount kit
50966D45000E	Adaptor 24V 120W, wire only, LTE120ES-S4-1

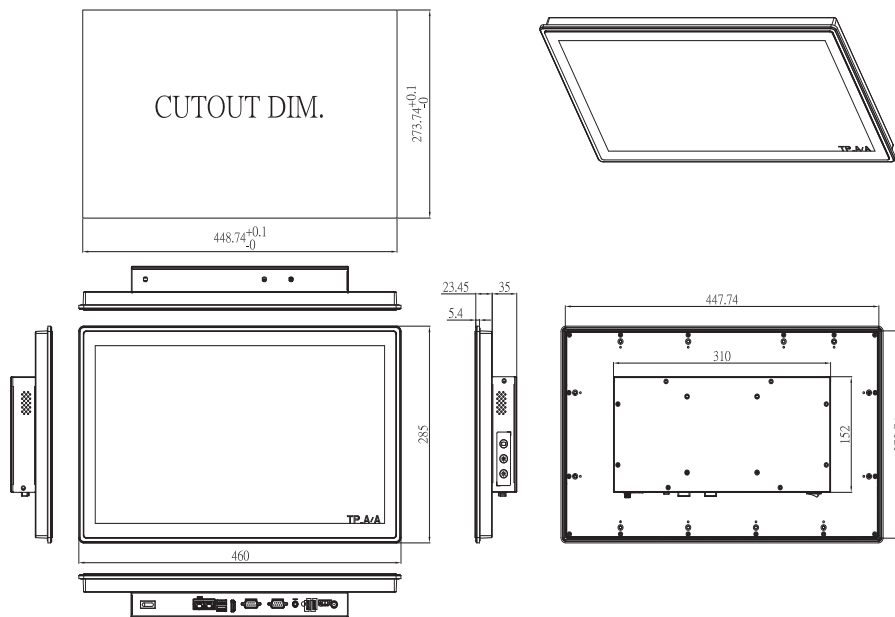
Optional EOS Installation

Windows® 10 IoT Enterprise (64-bit)

Optional OS Installation

Windows® 10 (64-bit)

Dimensions



Assured Systems

Assured Systems is a leading technology company with over 1,500 regular clients in 80 countries, deploying over 85,000 systems to a diverse customer base in 12 years of business. We offer high-quality and innovative rugged computing, display, networking and data collection solutions to the embedded, industrial, and digital-out-of-home market sectors.

US

sales@assured-systems.com

Sales: +1 347 719 4508
Support: +1 347 719 4508

1309 Coffeen Ave
Ste 1200
Sheridan
WY 82801
USA

EMEA

sales@assured-systems.com

Sales: +44 (0)1785 879 050
Support: +44 (0)1785 879 050

Unit A5 Douglas Park
Stone Business Park
Stone
ST15 0YJ
United Kingdom

VAT Number: 120 9546 28
Business Registration Number: 07699660